

Highway Bill Amendment Is Introduced

An amendment to Assembly Bill 1350, under which each county will receive a \$60,000 biennial base allocation to be expended for postwar state highway improvements in rural areas, has been introduced, and hearings on this bill were set for next Wednesday before the Assembly Conservation and Planning Committee. Authors of the bill are Assemblymen Stream, Kraft, and Mrs. Niehouse.

The amendment, introduced by the authors, modifies the allocation formula as originally written in the bill, and further recognizes the needs of the rural counties with respect to future state highway construction and improvements. After the basic biennial allocation of \$60,000 has been made by the State Highway Commission, the balance of the limited access highway funds are to be expended in the proportion that the motor vehicle registration in each county bears to the total state motor vehicle registration.

The pending legislation, sponsored by five statewide organizations, provides for future construction of approximately 2700 miles of limited access roads in the rural areas of California, and 600 miles of urban freeways in the seven metropolitan centers. Supporting organizations concur with the authors in recognizing needs of the rural counties, as is provided in the amendment. These organizations include the Automobile Club of Southern California, the California State Automobile Association, the California State Chamber of Commerce, the County Supervisors Association of California, and the League of California Cities.

Altar Society New Officers Slate Meeting

Mrs. Margaret Jones, president of the Ladies' Altar Society of St. Margaret Mary's Church will welcome all members and friends of the organization at the first meeting of the society since election of new officers.

Wednesday, May 16, is the date and the hour 7:30 p.m. at the rectory.

LOW-COST TRANSPORTATION



NEW 1945 WHIZZER BICYCLE MOTOR

This complete bicycle motor is ready to give you convenient transportation at lowest cost. 2 1/2 H.P., 4 Cycle, 5 to 40 M.P.H. 120 Mi. per gal. Only \$125, including all attachments. Come in for free demonstration now.

TORRANCE CYCLE & FIX-IT SHOP
1341 EL PRADO
Torrance
Phone Torrance 382-J

BOYS! — GIRLS! THE STORY TELLER

J. RAYMOND TON
ONE HOUR OF FUN
BEAUTIFUL NATURAL COLOR PICTURES — MAGIC SONGS — TRICKS — GAMES — PRIZES
ONE WEEK ONLY

May 14 through May 19
Daily — 4:00 P.M. to 5:00 P.M.

ASSEMBLY OF GOD

1741 Border Ave.
TORRANCE, CALIF.
PAUL H. PERRY, Pastor

ADMISSION FREE PARENTS WELCOME



WOODCRAFT RANGERS MAKE RECORD . . . Torrance tribe of Woodcraft Rangers, one of the newest and sponsored here by the Lions club, spent last week end at Griffith Park with several hundred other Woodcrafters of Southern California, and came back with first, second and third prizes in archery. Shown above, back row, left to right, are Gus Wendorf, supervisor; David Helge, who took first archery prize; Norman Cline, Teddy Sheiberg, Tommy Giatras, who was third prize winner, and Marzitt Stokoe, guide of the tribe. Front row, left to right, Eddie Lee, Jim Babbitt, Don Babbitt, Richard Loewensohn, Ronald Loewensohn, Robert Loewensohn, John Babbitt, Robert Maggard and Pete DePhillips. The Loewensohn boys, recently repatriated from the Philippines after three years in Japanese hands in Manila, were guests of the Woodcrafters at a puppet show in the Woman's club Friday night. Torrance Lions are furnishing guides, transportation and athletic equipment for the Woodcraft Rangers. The tribe meets Friday nights at the high school gymnasium. (Torrance Herald photo.)

Torrance Visitor, Repatriated From Manila With Family, Says Japanese Atrocities Worse Than Revealed

Japanese atrocities are twice as bad as they are reported to be in the United States. They couldn't be worse.

Authority for this statement is Mrs. Carmen Loewensohn, who just arrived with her three children on Navy transport from three years in custody of the Japanese in Manila.

The three children, Richard, Ronald and Robert, say they owe their lives to the fact that they could speak Spanish to the Japanese, refraining from the use of English.

Mrs. Loewensohn, whose brother, William Baugh, married Margie Castle, daughter of Mrs. C. Z. Ward of Torrance, is staying with the Wards for the present.

Her husband, a civilian engineer for the U. S. Army, was killed in China by the Japanese. Her father, also an engineer who assisted in laying out the tunnels of the fortress of Corregidor was taken to Corregidor soon after he was captured by the Japanese to show them the network of underground avenues.

Later he was killed. The sister-in-law of General Valdez, famed Philippine patriot, she was repatriated with John Valdez, brother of the general, and his wife, Ruby, and their two children.

Her sister and her family, except one boy, were buyoneted by the Japanese in their ravages of the Philippines.

Mrs. Loewensohn's sons are being placed in a military academy in California, she said.

Lomita Women At P.T.A. Meet

Local presidents of P.T.A. units attending the P.T.A. Tenth District Family Life Institute, May 3, at Poly High school, Los Angeles were Mrs. Kenneth Schwartz, Narbonne High school; Mrs. Wray Nansel, Orange st.; and Mrs. Eldredge Walker, Harbor City.

New, interesting and timely views on child growth and de-

Gaffey Storm Drain Work To Be Started

After long negotiation the Navy is ready to restore drainage conditions on N. Gaffey st. as they existed prior to the filling of the south arm of Bixby slough with silt dredged from west basin, it has been reported.

Los Angeles City Engineer Lloyd Aldrich said today \$26,000 has been authorized for the improvement and that the successful operation of the plan depends on the Navy putting in a reservoir on property it owns west of Gaffey.

Aldrich said the improvement will include the building of two culverts, one under Gaffey and another under Anaheim. Also included in the work is a spillway on the east side of Gaffey.

The drainage project will carry storm waters from the Navy fuel depot property into Bixby slough.

Aldrich pointed out that flooding of the heavily-traveled road will be prevented during normal storms but that at the end of extra heavy rainy seasons the slough level may go high enough to flood back onto the road, as happened several years ago.

The city engineer in his report to the city council said that eventual solution of this flood problem can be corrected only by construction of a diversion channel to drain approximately 25 acres of land through the long-proposed drain to carry excess slough waters into the west basin near Figueroa st.

Applications for Lanham act funds for this latter project were filed a year ago but no action has yet been taken, Aldrich said.

Lomita Folk Are Honored on Big Radio Program

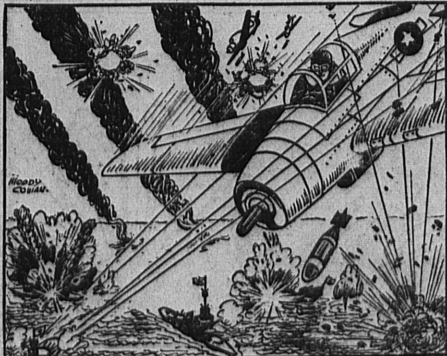
D. R. Topfiff, 96, and his daughter, Mrs. H. V. Adams, 75, both of Glendale, and grandfather and mother of Mrs. A. E. Cook, 24314 Allene ave., appeared on Art Baker's Radio Show, "Never Too Old," on Friday.

Mr. Topfiff and Mrs. Adams both qualified for the radio show by being over 70 years of age and by sending in letters of their eventful lives.

A wrist watch was presented to Mr. Topfiff and \$10 to Mrs. Adams.

READ OUR WANT ADS

AMERICAN HEROES



COMDR. JAMES HAILE MINI, U.S.N., already holder of a DFC, has been awarded a Navy Cross for leading a flight of carrier planes against the Japs in the Philippines. He so displayed his command that they severely damaged six major combat vessels. Despite heavy anti-aircraft fire, he made an accurate bomb-run on a battleship, scoring a direct hit with a 1000-pound bomb. War Bonds helped pay for the planes and bombs that enabled the Manila-born officer to render that foe ineffective. His home now is at Vallejo, California. U. S. Treasury Department

Archer Named On 7th War Loan Committee

Franklin Archer, advertising manager of Bullock's, Los Angeles, has been named as one of the three members of the national retail advertising committee for the Seventh War Loan drive, which starts May 14. The committee's activities will be confined to department stores, clothing stores and specialty shops.

Archer's appointment, made by Samuel J. Cohen, national head of the retailers' Bond selling activities, was announced by Los Angeles War Finance Committee headquarters. Bert M. Sarazan of Washington, D. C., is chairman of the special committee, while the third member is Reuben Ryden of Detroit.

Paramount aim of the committee will be to stimulate the use of more War Bond advertising by retailers, especially during the coming drive. Ads prepared under direction of the group will be made available to retailers and will supplement the series of Bond ads in mat form furnished by the War Advertising Council and the War Finance Division. It was announced.

First series of the committee's ads will feature the V-mail Bond certificates obtainable at store booths as gifts for men and women in the armed forces overseas.

Be cautious with whom you associate, and never give your company or your confidence to those of whose good principles you are not sure.

—Bp. Coleridge

C. C. Christiansen Completes Course At Chapel Hill

Student Aviation Pilot Calvin C. Christiansen, son of Mr. and Mrs. Walter E. Christiansen of 25842 Oak st., has successfully completed the course at the U. S. Navy preflight school at Chapel Hill, N. C.

This school is one of four ground school and physical training centers for future Navy, Marine, and Coast Guard pilots. Student Pilot Christiansen has

been transferred to the Naval Air Station at Memphis, Tenn., for primary flight training.

A student at Washington County High school, Akron, Colo., Christiansen enlisted in the U. S. Navy and served two and a half years sea duty. His rating at the time he entered naval aviation training program was AMM 2/c.

Another member of the Christiansen family in the service is Norman W., AOM, 1/c, NAS, Ford Island.

Business, professional or personal cards are readily obtainable at the Torrance Herald office Phone Torrance 444, 443

CAROL'S . . . For A Complete Selection of CHILDREN'S FURNITURE



Everything for infants to twelve . . . including Furniture, Toys and Clothing!

Carol's Children's Store
Enter today! Get details at Store.
INFANTS TO TWELVE Model Building Contest
Clothing, Toys, Furniture and Shoes
24801 Narbonne Avenue Phone Lomita 80

SAFeway Guaranteed Values

WHEN YOU SHOP at Safeway, your satisfaction is guaranteed in every purchase. You'll find all foods high in quality and low in price.

We urge you to make your own comparison of our prices. Buy all of your food at Safeway for a month. Then see how the total cost compares with the cost of food for previous months.

Is it really true that everything I buy is guaranteed or my money will be refunded in full?

Of course...at Safeway you must be pleased every time you buy.



CANNING SUPPLIES

Fruit Jars	Kerr Brand	Dozen 62¢
Fruit Jars	Kerr Brand	Dozen 76¢
Metal Lids	For Fruit	Package of 12 9¢
Jels Rite	Fruit Pectin	8-oz. bottle 11¢
Parowax	One-pound packages	2 for 25¢
Beet Sugar	Cloth bag	10 lb. 61¢
Cane Sugar	Paper bag	10 lb. 63¢

(5-pound paper bag, 32¢)

JULIA LEE WRIGHT'S CANNING GUIDE

Julia Lee Wright's new publication Step By Step Canning Guide contains complete easy-to-follow directions for canning fruits, fruit juices, jams and jellies, tomatoes, vegetables, meat and fish, poultry and rabbit. Don't depend on out-of-date methods, or the advice of neighbors! Be safe! Avoid waste of time and effort! Know the approved methods of canning—pressure cooker and boiling water bath. Here are 12 pages, 8" x 10 1/2" filled with up-to-date information on Home Canning, printed and profusely illustrated on heavy golden paper—an addition to your cookery bookshelf, or a handy kitchen pin-up. For real assistance in your 1945 canning, mail the coupon below, with 5c in coin, allowing several weeks for delivery because of the uncertainties of war-time transportation.

JULIA LEE WRIGHT, DIRECTOR
Safeway Homemakers' Bureau
P. O. Box 2110, San Francisco, Cal.

Enclosed is 5c in coin. Please send me your STEP BY STEP CANNING GUIDE.

Name _____
Address _____
City _____ State _____

NIBLETS CORN	Vacuum Packed	12-OZ. CAN	13¢
(20 BLUE POINTS PER CAN) Whole grain, golden.			
HIGHWAY CORN	Vacuum Packed	12-OZ. CAN	12¢
(20 BLUE POINTS PER CAN) Whole grain, golden.			
CATSUP-STYLE SAUCE		13-OZ. BOTTLE	20¢
(POINT FREE PRODUCT) Quincy Brand. Use like catsup.			

POINT FREE FOODS

Sunsweet Prunes	1-lb. pkg.	16¢
Extra large size—tenderized.		
Sun-Maid Raisins	15-oz. pkg.	12¢
Seedless variety (Puffed Raisins, 15-oz. pkg., 13¢)		
Apple Butter	Libby Brand 19-oz. jar	20¢
Point free		
Shoestring Beets	2 16-oz. jars	25¢
Comstock Brand.		
Soup	Rancho Brand, Tomato or Asparagus variety, cans	10 1/2-oz. 17¢
Rancho Vegetable Soup, 10 1/2-oz. can, 7c.		
Raisin Bran	Skinner's Brand 10-oz. pkg.	11¢
Post Toasties	Corn Flakes 18-ounce package, 13c.	9¢
Grape Juice Punch	14-oz. bottle	24¢
Monterey Brand—point free.		

TYPICAL SAFEWAY VALUES

Canterbury Tea	Half-pound 43¢
1/4-pound package, 22c; one-pound package, 85c.	
Nob Hill Coffee	Rich Blend 2-lb. 46¢
Edwards Coffee	Drip or 1-lb. regular jar 27¢
Argo Gloss Starch	12-oz. 6¢
Camay Soap	3 bars 20¢
Purex Bleach	2 Quart bottles 23¢
White Magic Bleach	Half gallon size, 17c. Quart 9¢
Scotch Cleanser	Triple 14-oz. 9¢
Action. pkg.	

SOLID CABBAGE	MEDIUM SIZE	LB.	4¢
Fresh green cabbage. To cook or to use for cool salads.			
GREEN CELERY	FANCY, FRESH	LB.	15¢
Utah type. Tender and crisp. A complete salad in itself.			
LOCAL ASPARAGUS		LB.	17¢
Crisp, green stalks. Enjoy some served hot, some in salads.			
WHITE TURNIPS	LOCAL CROP	LB.	5¢
Sweet, fine flavored. Note the low price at your Safeway.			

1301 SARTORI AVENUE, TORRANCE

2171 PACIFIC COAST HIGHWAY, LOMITA