

## STRIP OFF PARTS

The miracle of Army maintenance would not be complete without the work of ordnance salvage crews who strip valuable parts from damaged equipment that is not repairable and store them for future use.

## Ultra LUMINALL

### 1st CHOICE AMONG WATER-MIXED PAINTS



- 1 Coat Covers
- Easy to Apply
- Dries in 40 Minutes
- No Strong Odor
- Washable
- Use Over Wallpaper
- Beautiful Colors

Ultra LUMINALL is Made with Highly Washable Resin Binder



PER GALLON  
**\$2.95**

Sold Exclusively by  
**NATIONAL**  
Paint & Wallpaper  
1405 1/2 Sartori — Torrance

## Columbia Plant In Pittsburg Gets 4th Star

In recognition of continued production achievement of material for merchant ship construction, the Pittsburg Works of Columbia Steel Company, a U. S. Steel subsidiary, has been awarded a fourth gold star, Joseph A. White, Superintendent of the Works, announced today. Notification of the award was contained in a letter to White from H. L. Vickery, Commissioner, U. S. Maritime Commission, who stated: "You will please accept my sincere appreciation of your company's continuing contribution to merchant ship construction, and extend to all of your employees my warmest congratulations for the attainment of high goals in support of the valiant men of our Army, Navy and Merchant Marine."

As well as the Maritime "M" Pennant with four stars, the Pittsburg Works has also been awarded the Army-Navy "E" with three gold stars and the Treasury Minute Man Flag.

## Asphalt Plant To Be Located Near Torrance

The Board of Supervisors has granted a permit to the Los Angeles Paving Company to establish, operate and maintain an asphalt mixing plant at the northeast corner of Dominguez st. and Wilmington ave. in the Dominguez district. Supervisor Raymond V. Darby stated that the preponderance of evidence presented proved that the proposed use at this location would not be detrimental to the health, safety and general welfare of the community.



ARTISTS DRAW PORTRAITS AT ARMY HOSPITAL... Torrance's Army hospital's special service office has arranged a project whereby groups of the most talented artists in Southern California pay weekly visits to the hospital for the purpose of sketching lifelike charcoal and pencil portraits of hospital patients. Above in action with a group of the patients are shown two of the artists.

## Glowing Picture of Torrance After The War Is Painted at Chamber Meet

The regular quarterly meeting of the Torrance Chamber of Commerce was held in the Woman's Club, Torrance, recently, following a meeting of the directors in the Chamber headquarters.

Reed H. Parkin, secretary-treasurer of the Doak Aircraft Company and President of the Chamber, painted a very glowing picture for the Torrance trade area, providing everyone "gets in and pitches."

In addressing the directors, Parkin said: "Underneath every project of the Chamber of Commerce lies a layer of hard work, unseen and unsung. This plotting, unromantic, spadework constitutes the red flannels of Chamber of Commerce operation. Intimate but unglamorous, it seldom meets the eye or stirs

the soul. Yet it is essential to the comfort and protection of the community as a layer of flannel against the chill of winter. Civic improvement, industrial, cultural and recreational projects, all those things that make for a better city in which to live and work do not 'just happen.' They exist in Torrance because Torrance men and women made them happen. The Chamber of Commerce is the medium through which the aspirations of the determined citizens are fulfilled.

"Torrance enjoys many diversified industries. I would personally like to see all of them remain in operation after the war, with workable postwar programs. This can happen. Our permanent industries — those present prior to the war, can multiply their personnel and output."

R. L. Plomert, Jr., tax executive of the General Petroleum Corporation of California, said that the work of the Chamber in encouraging the tax reduction was outstanding, also the routine work of the organization had not gone unnoticed. New industries seek sites where the taxation is comparatively low.

Al Trenkle, Red Cross executive, stated that he had an ample opportunity to obtain a cross-section of reaction from industries and commerce and that they were all enthusiastic about the accomplishments and plans of the Torrance Chamber of Commerce.

Hillman R. Lee, manager of J. C. Penney Company declared that retail sales of all Torrance merchants had gained by leaps and bounds since the Chamber had reorganized.

Mayor William H. Tolson stated that the combination of Chamber of Commerce, City Council and newspaper, all co-operating, was an unbeatable team. He suggested increased and improved transportation and housing as an immediate program. "Particularly we should serve the surrounding trade area in the interests of war production," Mayor Tolson said.

James L. Lynch, past-president of the Chamber outlined what had been accomplished since the reorganization of the organization and stressed the need for additional membership in the chamber to carry on the increased burden.

Executive Secretary Harry B. Lewis, in his report, said: "We are now entering upon the second quarter of the second year

As a result of the project, large, lifelike charcoal portraits are being hung in the hospital wards, or sent home to families or sweethearts.

Leading the parade is the well-known artist, Theodore N. Lukits, director of the Lukits Art School in Los Angeles, and active participant in local art circles. Lukits is enthusiastic about the plan, stating that he derived more pleasure from doing the portraits of disabled servicemen than he did from painting the likenesses of some of our most famous personages.

Accompanying Lukits is his wife, Mrs. Eleanor Merriam Lukits, and several of the expert pupils from his school. Mrs. Lukits, in addition to being an accomplished artist in her own right, is the daughter of the famous California painter, James Merriam, whose desert and mission scenes have gained him lasting fame.

of the reorganized Torrance Chamber of Commerce.

"By this time it is trusted you undoubtedly realize the difficulties confronting the secretary of a Chamber of Commerce. He is expected to be an expert in all lines. He finds he has spent most of his year arduously in the higher and lower planes of action.

"We have found that our members are out first to win the war, second to work for the civil liberties, third to meet the peace. Your Chamber of Commerce, through its directorate, officers, and committees, is using its best endeavors to carry out these three objects.

"Your Chamber has cooperated with all governmental agencies and local charitable organizations, granting office space and facilities when needed without charge.

"Efficient and well-chosen committees active in postwar planning, bearing in mind the needs of this area at present and after the war, particularly in respect to immigrant industries, housing, highway development, railroad and motor transportation, intercity relations, regional publicity, civic improvements, and the continued development of recreational activities.

"Hundreds of inquiries have been received from prospective residents and those interested in visiting this area after the war.

"We have prepared and submitted eighteen briefs for companies desiring to locate or open branches in Torrance. We have excellent possibilities of establishing a Veterans' Bureau Hospital, Huge Naval Airport, Naval Academy of the West Coast, and many industries in this immediate area, however, we must have the financial and moral backing of industry, commerce, and citizenry."

## PENNEY'S 43 YEARS of fair dealing

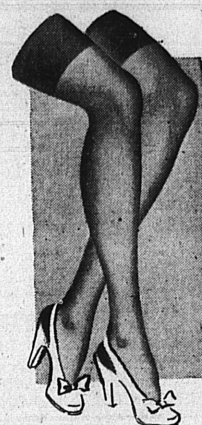
1902-1945

IN TORRANCE

Mr. and Mrs. Customer, of Pennsylvania, U. S. A., thrifty average Americans, see the people who have helped spread Penney stores all over the map. Why? Because they recognize and appreciate fair dealing! Because they know they can always depend on Penney!



Accentuate the smartness of your wardrobe with soft rayon frocks in solid shades and picture-pretty prints. Delightful full skirted rayon jerseys, delicate sheers with pert ruffled pockets; clever print-and-plain combinations, 2 piece styles.



A Lesson in Leg Flattery

WOMEN'S HOSIERY

Sheer loveliness spins itself over your legs like a light web of silk. These "duration" sheers are designed to fit gracefully, precisely, without wrinkling. Reinforced heels for comfort and long wear.

**81¢**

*New Dress Accents*  
in print  
**7.90**

For Subtle Figure Flattery



Single, Double Breasted  
**TOWN-CLAD\* SUITS**

**29.75**

Sharkskin effects, striped tick weaves, and light fancy stripes. Flawless tailoring, all wool worsteds.

\*Reg. U. S. Pat. Off.



Be first on line for...

*Solar\* Straws*  
**2.98**

Impression making straws that add to your appearance and comfort; neutral shades to harmonize with your suits; lightweight and airy, with new, contrasting band.

Casual, always right solid-tone straws, cool open-weave; genuine leather sweat band. **1.98**

\*Reg. U. S. Pat. Off.

**NEW ARRIVALS READY FOR SELLING 9:00 A. M. FRIDAY MORNING**

WOMEN'S CREPE  
**HOUSE COATS** ..... **2.98**  
Assorted colors and floral designs.

ATTRACTIVE  
**LAMP SHADES** ..... **39¢**  
Adds beauty to any room.

14-PIECE  
**JUICE SET** ..... **79¢**  
Complete with 12 glasses. Ideal for vegetable or fruit juices.

**19-Inch Circular Plate Glass Mirror**  
Beautify your rooms with these attractive crystal clear adornments.

36-INCH  
**WINDOW SHADES** ..... **79¢**  
Machine painted. Cut to fit your windows at no extra cost.

MEN'S SHORT SLEEVE  
**SPORT SHIRTS** ..... **1.19**  
Quality. Blue, tan, and white. Sizes small, med., large.

OFFICIAL  
**BOY SCOUT PANTS** ..... **3.25**  
Waist sizes 25 to 32. Shirts to match, 2.25.

**2.98**

**Come One!! Come All!!**  
Where The Crowd Gathers

**Grand Opening**  
of the  
**COLONY CLUB**  
FORMERLY—CURLY

**SATURDAY, APRIL 21**  
**14921 S. Western Ave.**  
OPPOSITE NORMANDY CLUB

Completely Remodeled and Under New Management  
**FREE SOUVENIRS TO THE LADIES**

**Orchestra and Dancing Nightly**  
(EXCEPT TUESDAY)

**Never a Cover or Admission Charge**  
**COCKTAILS & MIXED DRINKS**



Today there's new enjoyment  
in the grand old name  
Golden Wedding... a lighter,  
finer flavor to sip slowly...  
something to remember  
with pleasure. 86 proof.

On Sale Thursday,  
Friday and Saturday

**\$3.45**  
*Fifth*

Come to Sontag for  
Your Favorite Liquors!

Ask for the brand you  
prefer 16 if's avail-  
able — Sontag has it!

**Sontag**  
Original Cut Rate Drug Stores

**1269 SARTORI AVE. — TORRANCE, CALIF.**