

Schools Week Features Are Show, Assembly

A community assembly next Wednesday evening and the Builders' Hobby Show will be main features at Narbonne High school in observance of Public Schools Week, April 23 to 27. The schools classes will have parents as guests Wednesday afternoon, when tea will be served in the Crafts room. The Guilders throughout next week will receive exhibits for the hobby show by Rod McDanel, Guilders president.

HAMLIN NAMED

Edwin G. Hamlin, court attorney for the OPA district rent control office, has been appointed to the post of chief eviction executive in the division. Hamlin, with OPA since it began, succeeds Charles Hinman.

THURSDAY CLUB IS ENTERTAINED

The home of Mrs. E. W. Clark, 1419 Beech ave., was a setting for luncheon and bridge party April 12, when the Thursday Afternoon Club was entertained. Prizewinners at contract were Mmes. O. W. Hudson, H. Archer Lewis and Fred Knudsen.

SUCCESS FACTORS

Key to the extraordinary productivity of ordnance field maintenance is to be found in three factors—use of trained ordnance specialists, the versatility of tools and equipment, and a dependable system of parts supply.

ed to the post of chief eviction executive in the division. Hamlin, with OPA since it began, succeeds Charles Hinman.

Tartar Tennis Team Scores Over Narbonne

By KENNETH KESSON

Last Thursday, the Tartar tennis team defeated the Gauchos from Narbonne to the tune of 5 to 2. This was the second win of the present season. The first was with the Mohicans of Gardena, the score being 4 to 3. The next match is with San Pedro, this will prove to be no pushover.

If comparative scores mean anything, the Tartars have a good foothold on the way to championship.

The lineup at Narbonne: Singles, Swain (N.) defeated Weaver (T.), 8-6, 6-8, 6-4. Jorritsma (N.) defeated Stanley (T.), 6-3, 8-6, 6-4. Meyer (T.) defeated Allen (N.) 6-4, 6-0. Page (T.) defeated Coley (N.) 3-6, 6-1, 7-5. Kesson (T.) defeated Crammer (N.), 11-9, 6-3. Doubles, Smith and Standifer (T.) defeated Rae and Schildmeyer, 6-8, 6-2, 6-4. Sommer and Domingues (T.) defeated Limpich and Downard, 6-3, 4-6, 6-3.

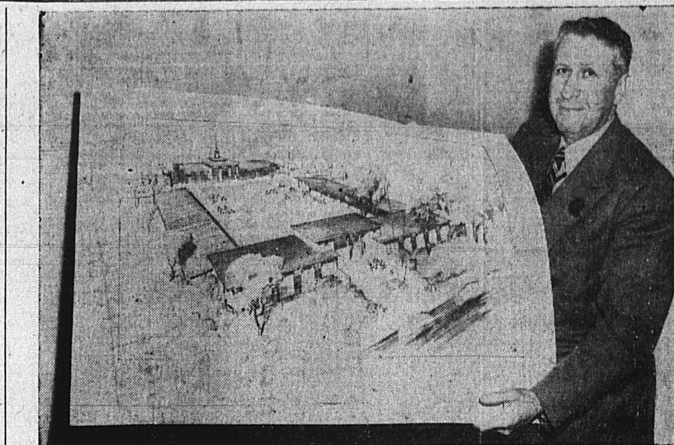
At Gardena: Singles, Weaver (T.) defeated Zaik (G.), 8-6, 1-6, 6-0. Stanley (T.) defeated Smilerton (G.), 6-4, 6-4. Stien (G.) defeated Meyer (T.), 7-5, 7-5. Gillian (G.) defeated Page (T.) 2-6, 6-4, 7-5. Kesson (T.) defeated Clark (G.), 6-2, 1-6, 7-5. Doubles, Smith and Standifer (T.) defeated Connors and Hitchcock, (G.), 4-6, 6-2, 7-5. Ange and Sidelbottom (G.) defeated Sommer and Domingues (T.), 6-3, 6-4.

Young Kersey Hurt in Action

Lieut. Vierling Kersey Jr., U. S. N., who until he entered the service was teacher of animal husbandry at Narbonne High school, suffered shrapnel wounds and leg and arm fractures at Iwo Jima and was evacuated to a Navy hospital at Honolulu, according to information received at the school.

LOT OF MONEY

Annual audit of "public money" in the Los Angeles City treasury reveals the city has on hand \$80,551,413.76, including U.



LAWRENCE L. FRANK, president of the Crippled Children's Society of Los Angeles County, examines architect's perspective of proposed center for crippled children's work.

CRIPPLED CHILDREN'S CENTER PLANNED

With their annual Easter Seal fund-raising campaign in full progress, directors of the Crippled Children's Society of Los Angeles County yesterday decided to take steps toward erecting a building group to centralize the various expanding services in the interest of handicapped youths.

"The need for a center of this nature, comparable to those operating so successfully in most metropolitan cities, has been recognized by us for several years, but funds have not been available," said Lawrence L. Frank, president of the society.

"Our requirements are for a sheltered workshop, administration building, occupational and speech therapy rooms, classrooms for

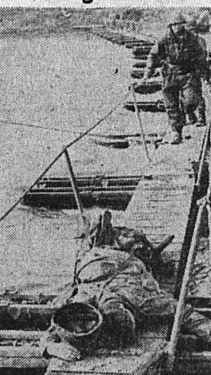
parental education, lecture rooms, meeting rooms, and a library devoted to subjects pertaining to the handicapped child. Later it is hoped to erect a small auditorium, which the children can use for their presentations. Our plans call for simple, light and airy single-story buildings, with no steps to hamper crippled children, and sufficient space for outdoor activities. A committee has been appointed to arrange a fund-raising plan for acquisition of a suitable site readily accessible from all parts of the county. While building will necessarily be a postwar project, our plans are to make a small beginning and to provide greater facilities as funds permit."

The present offices of the society are at 357 South Hill Street. The

society is organized to help neglected physically handicapped children under 21 years of age, its primary functions being to find these youngsters and place them in the existing private or public institutions where their disabilities may be best corrected. The society then follows through along rehabilitation lines with the broad aim of making self-supporting citizens tomorrow of the crippled children of today.

Directors include E. B. McGroot, Paul Dietrich, Lawrence L. Frank, William R. Harriman, Dr. Joseph C. Rissen, Howard Rosine, Mrs. Ada Thompson, Mrs. Spencer Tracy, and Walter Van de Kamp. Miss Friendly Sumner Lucas is director of services.

Bridge Death



An instant after this picture of a dead Yank lying on a footbridge across the Ror River, Germany, was taken, the bridge was washed away. The shell which killed him severed the bridge anchor.

PUBLIC SCHOOLS WEEK TO BE OBSERVED HERE

Presenting educational practices, procedures and outcomes to parents and other interested citizens, the Los Angeles City schools will observe the 26th annual Public Schools Week from April 23 to April 28.

Miss Mary Charlotte Waddell, principal of Fern Avenue and Waverly schools, her teachers and pupils join in a cordial invitation to parents and friends to visit Fern Avenue school on April 25 when Open House will be held throughout the day. Regular classes will be in session and the work of the school may be observed. Guests will be received and directed to class rooms by a committee of boys and girls. In the halls may be seen pictures recently purchased by the school as well as art work of the children. A special exhibit in the show case is an interesting display of beautiful articles from Burma arranged by Mrs. Ina Burge, primary teacher, who spent more than five years teaching there in a mission school. Tea will be served in the lower hall from 10 to 10:30 and from 3:15 to 4:15.

A store window of the J. C. Penney Co. in downtown Torrance, will house the Fern Avenue exhibit of children's work including a number of articles representing their generous contribution to Junior Red Cross of which Mrs. Ida Rose Saunders is school chairman. This display is arranged by Mrs. Peggy Marsh, Mrs. Dorothy Barkley and Mrs. Olive Boring.

STUDY OCEAN FLOOR

The Los Angeles city council, has appropriated \$25,000 in addition to an original \$35,000 for the study of the ocean floor over which the projected outfall sewer will extend one mile from Hyperion.

Development Of Rural Roads Is Provided

Development of approximately 31 percent of the rural and urban state highway mileage of Southern California to modern freeway and limited access standards will be permitted by legislation now pending, it is revealed in a report issued by the California Major Highway Development Committee. The legislation to authorize and finance this development is sponsored by the Committee, which is composed of representatives of five state-wide organizations.

The Committee's report shows that of the present total of 4,886 miles of State highways in Southern California, 1,512 miles will be improved to limited access or freeway standards. Of the 1,512 miles of modernized highways, 1,178 will consist of limited access roads through rural areas, following for the most part major routes to the north and east, connecting with interstate routes. A total of approximately 283 miles will be allocated to the Los Angeles metropolitan area, comprising 44 communities, for freeway construction; and the metropolitan San Diego allocation will be about 52½ miles. These allocations have been determined on a basis of area and population, with equal weight given to both factors.

For the State as a whole, the plan provides for modernization of 3,300 miles of existing State routes, of which 2,700 miles will comprise rural and inter-urban highways, and 600 miles will be metropolitan freeways, located in California's seven major centers of population. Thus, out of 13,617 miles of State highways, approximately 24 percent will be modernized so as to provide for free and unimpeded flow of traffic, the Committee points out.

Organizations represented on the Committee include the Automobile Club of Southern California, the California State Automobile Club of Southern California, the County Supervisors Association of California, and the League of California Cities.

Wedding and personal stationery of distinction are easily ordered by calling in person at 1336 El Prado, Torrance, or telephoning Torrance 444 or 443.

Y.M.C.A. Meeting Scheduled for School Friday

Gil Derouin, chairman of the Torrance Y.M.C.A. announced that the regular monthly "Y" meeting is to be held Friday noon at the Torrance High school. The girls of the economic class are planning the noon meal.

Activities in the local Y.M.C.A. have had a steady growth. Torrance Y.M.C.A. supervised activity has grown to a membership of over 330.

Ted Meier, executive secretary, announced that local youth interested in going to Camp Round Meadow, August 22 to 29 should contact him immediately.

NEW YORKERS ARE PARTY HONOREES

Mrs. E. H. Locatelli and her house guest, Mrs. Eleanor Stiegler, of New York City, were delightfully entertained last week-end prior to their departure for their New York homes. Mrs. E. S. Ragland was their hostess Friday evening at her Beverly Hills home, Mrs. F. D. Lewellen entertained them at luncheon and bridge on Saturday. On the same evening, Mrs. J. Mulaney entertained at dinner and dancing at her Westwood home. In turn, Mrs. Locatelli received Los Angeles and Pasadena friends at luncheon at Huntington Hotel in Pasadena on Tuesday. Mrs. Locatelli and Mrs. Stiegler joined friends at the races Sunday. Mrs. Eyer-Fillmore was another hostess to the eastern ladies.

NAVY MOTHERS TO MEET FRIDAY

Little Hills Navy Mothers' Club No. 157 will hold a regular meeting at 7:30 p.m., Friday at V. F. W. Hall, Lomita.

Mrs. Loella Elder, president, is making an appeal for a sewing machine for use of the ladies in their Navy welfare work. The group meets each Tuesday at Torrance Scout House for an all-day sewing session.

PEERS ENTERTAIN

Mrs. Phillip E. Peer and daughter, Denise, arrived recently by plane from Portland, Ore., for an indefinite visit at the home of his parents, Mr. and Mrs. W. R. Peer of 1328 Anapola ave. Pfc. Phillip E. Peer is serving with a Quartermaster Depot Supply unit in the Hawaiian Islands.

New All Metal SCOOTERS

With Rubber Tires. . . . \$995



ALL-METAL, WITH RUBBER TIRES.

BABY BUGGIES \$2495

Beautiful Stuffed Animals . . 89c to \$11.50

10% OFF of Our Ceiling Prices on Children's Clothes. Fri., Sat. and Mon.

Several Kinds of Good Elastic KITES 10c

See Our Large Selection of Toys, Games, Dolls and Models. Keep Children Busy and Happy!

HOBBY SHOP

1219 El Prado Torrance 1757
Open Evenings to 8 P.M.—Bring the Family



Imagine spring house cleaning every day!

No matter what the calendar says, Golden State does a spectacular job of house cleaning every day, the year 'round. About half our working time at the milk plants is spent in cleaning!

Take our big pasteurization vats, for example, and the pipes that carry milk in and out of them. Cleaning this equipment calls for special "know how."

Before every milk "run," each vat is twice filled with hot water cleaning

solution...thoroughly hand-scrubbed with brushes and steel wool...twice flushed with clean water and rinsed to sparkling brilliance.

And the piping? That's all taken apart and soaked in individual washing tanks. An electric brush cleans the inside of each pipe.

Finally, all such equipment is sterilized by live steam. When we're finished, sterile water run through our pipes and vats would come out just

as pure as it was when it went in.

At Golden State we naturally take a lot of satisfaction in our daily spring house cleaning. It's one more important reason why Golden State dairy products are generally rated tops in purity and fine flavor!



You strike it RICH in Golden State

Perhaps you can't get all the Golden State Products you want just when you want them. Sorry, but necessary wartime restrictions limit quantities we, and other dairies, are able to supply. Please keep trying, and we will do everything we can to serve you and your dealer.

GOLDEN STATE COMPANY, LTD.

PRINTING with the UNION LABEL

Now Available (if desired by the customer)

at the
TORRANCE HERALD

If you desire the Allied Printing Trades Label on your Business Cards, Letterheads, Tickets, Window Placards, Handbills, Office Forms or any other type of Commercial Printing, please specify the "Union Label" when placing orders.