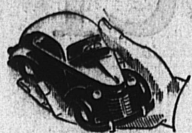


## IN BOOT CAMP

Clifford Murr is completing boot camp training at San Diego Naval Training Center, according to Mrs. W. N. Hiett, of

21502 S. Berendo, with whom he made his home. Murr hopes for submarine service, it is reported.

## READ OUR WANT ADS



**NOW**  
You Can Put Your  
Car in Safe Hands

**SAVE GAS..Get**  
That Spring Motor Tune-up Low!

**SPECIAL**  
MOTOR OVERHAUL

**69<sup>00</sup>**

Most 6-Cylinder Cars

Body & Fender Work, Painting  
SEE RAY AT THE

**CENTRAL GARAGE**

1635 BORDER AVE.

PHONE 617

TORRANCE, CALIF.

S-Sgt. Bergman  
Home on Furlough  
From Pacific

Marine Staff Sergeant Carl E. Bergman, son of Mr. and Mrs. C. H. Bergman, 21733 Dolores st., has returned home on furlough from the Pacific. Serving as an oxygen man with a Fourth Marine Air Wing service squadron, the 21-year-old staff sergeant was based in the Marshall, Gilbert and Mariana Islands, and on Midway. He enlisted in the Marine Corps in January, 1943.

Water Withdrawals in West Coast  
Basis Far Exceed Replenishments

Withdrawals of water from the West Coast basin of Southern California, which includes the South Bay area, and Torrance, is estimated to be 80,000 cubic feet annually with replenishments only 32,000 cubic feet annually, according to a statement by A. O. Gierlich, chairman, Ways and Means Committee of the West Basin Ground Water Conservation Group. Gierlich, who is city engineer of Manhattan Beach, told the

committee at a meeting held at the laboratory conference room of Richfield Oil Co. Watson refinery recently, that this shows withdrawals from subterranean sources are two and one-half times the safe yield. He based his figures on the surveys made by the Division of Water Resources, Department of Public Works, State of California.

The committee which was formed to study the problems of water supply in this whole area will seek to establish the boundaries of the area with which the group is concerned, and particularly the exact location of the Inglewood-Newport fault, according to Ben Haggett, secretary, who is president of the Palos Verdes Water Co. Several of the companies serving portions of Torrance are represented on the committee. The City of Torrance is not represented at this time, Haggett said.



## DO YOU LIKE

—Perfect Service  
—Perfect Food  
—Perfect Prices

THEN EAT AT—

**Cooper's Cafe**

—featuring Family Dinners and

—Merchants Lunch!

SARTORI AT MARCELINA

Open Daily 8 A.M. to 2 A.M.

(CLOSED ALL DAY MONDAY)

NO BEER! NO LIQUORS! !

## FIRST CHRISTIAN CHURCH

1416 Edgemoor ave.

Sunday school, 9:45 a.m. L. D.

Baltesch, superintendent.

Morning service at 10:40 o'clock.

Rev. B. E. Lingenfelter, interim

pastor.

Evening service, 7:30 o'clock.

Senior and Intermediate Christian

Education, 8:15 p.m.

Wednesday evening, 8 p.m., choir

rehearsal.

MASSA HOLYDAYS: 8 and 8 a.m.

Week day Mass: 8 a.m.

Evening services to Sacred Heart.

Wednesday, 7:30 p.m.

Devotions to Sacred Heart, First

Friday, 8 a.m.

Classes for converts, Monday

evening, 7 to 9 p.m.; Wednesday

evening, after services.

Confessions: Saturdays, 4 to 6

p.m.; 7:30 to 9 p.m.; eves of Holy-

days and First Fridays, same time.

Catechism classes: Wednesdays

at 8 p.m.; Saturdays at 9:30 a.m.

Altar boy meetings, Wednesdays

at 4:30 p.m.

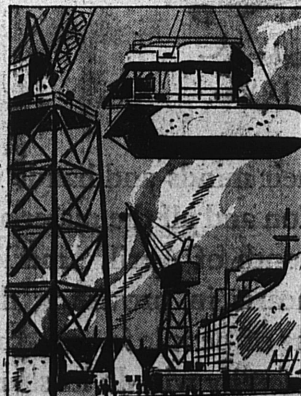
Choir rehearsal, Mondays at 7:40

p.m.

Altar Society meetings, last

Wednesday of month, 8:00 p.m.

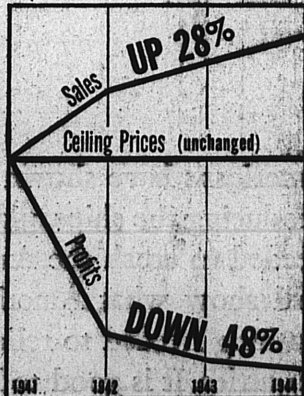
# You Ought to Know...



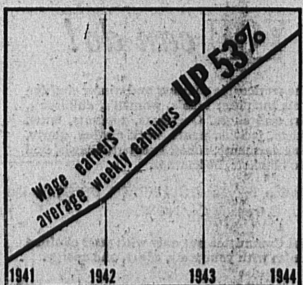
**World's record for steel making.** For the fourth year in a row, U. S. Steel has broken the world's record for steel making. Its steel production in 1944 was boosted to 40,800,000 tons. This was the largest tonnage in any year of U. S. Steel's history.



**14,400 war veterans hired.** Educational and training programs for returned veterans are under way. Training and upgrading of men are part of Steel's policy. Men are promoted to better jobs as fast as they can learn and demonstrate their ability.



**How much profit in wartime?** 1941-1944 prices of major steel products were substantially those imposed by Government price ceilings established in 1941. Sales increased \$460 million, but profits dropped \$88 million since 1941. The 1944 return on investment was 8.9%.



**Average weekly earnings of wage earners** in 1944 were \$54.37—an increase of 53% over 1941. There was no increase during this period in the rate of dividends paid stockholders for supplying an average of \$5,600 of tools or facilities per worker.

It is significant that U. S. Steel through the combined efforts of workers and management is producing the largest volume in its history but operating at the lowest profit of any large production year.

**UNITED STATES STEEL**

AMERICAN BRIDGE COMPANY  
AMERICAN STEEL & WIRE COMPANY  
and CYCLONE FENCE DIVISION  
CARNEGIE-ILLINOIS STEEL CORPORATION  
COLUMBIA STEEL COMPANY  
FEDERAL SHIPBUILDING & DRY DOCK CO.

H. K. FRICK CO. COMPANY  
GENEVA STEEL COMPANY  
GERARD STEEL STRAPPING CO.  
GUNNSON-HOMES, INC.  
MICHIGAN LUMBER AND  
CHEMICAL COMPANY



NATIONAL TUBE COMPANY  
OIL WELL SUPPLY COMPANY  
OLIVER IRON WORKING COMPANY  
PITTSBURGH LUMBER CO. CORPORATION  
TENNESSEE COAL, IRON &  
RAILROAD COMPANY

UNITED STATES COAL & COKE COMPANY  
UNITED STATES STEEL EXPORT COMPANY  
UNITED STATES STEEL PRODUCTS COMPANY  
UNITED STATES STEEL SUPPLY COMPANY  
UNIVERSAL ATLAS CEMENT COMPANY  
VIRGINIA BRIDGE COMPANY

## Church Services

NOTICE: Copy for Church Notices cannot be accepted after 10 a. m. Tuesday.

## CHURCH OF CHRIST

Services at Torrance Men's Bible

Class building 1314 Craven, Boyd

Pastor, 10 a. m.

Worship, 10:45 a. m.

Tuesday evening service, 7:45

o'clock. Study of the Gospels

Scriptures.

Wednesday, 10:30 a. m. Women's

Bible Class at 1306 1/2 Amador ave.

MEAN'S BIBLE CLASS

Meets at 7:30 Thursday evening

in their hall opposite public library

on Craven ave. All men welcome.

Rev. Reynolds, Hermosa Beach,

preaching.

NAZARENE CHURCH

W. A. Penner, pastor, 1501 West

Carson st.

Sunday school, 9:45 a. m.

Morning service, 11:00 o'clock.

Evening service, 7:30 p. m.

Young People's Meeting, 8:30 p. m.

Prayer meeting Wed. 7:30 p. m.

MONETA PRESBYTERIAN

CHURCH

1720 Gardena blvd., Gardena (1

block west of Western), at 165th

st. Phone ME 4-1064.

Rev. S. Martin Eldred, pastor.

Sunday School, 9:45 a. m.

Morning service, 11:00 a. m.

Topic: "Wayside Preaching."

Evening service, 7:30 p. m. Topic:

"The Highest Attainment."

Young People's Meeting, 8:30 p. m.

at Westminster Fellowship.

CATHOLIC CHURCH OF THE

TRIUNITY

Engle and Manuel avenues.

Rev. Fr. Patrick J. McGuinness,

pastor. Telephone 532.

Masses: Sundays: 8, 9:30 and 11

a. m.

Masses Holydays: 8 and 8 a. m.

Week day Mass: 8 a. m.

Evening services to Sacred Heart.

Wednesday, 7:30 p. m.

Devotions to Sacred Heart, First

Friday, 8 a. m.

Classes for converts, Monday

evening, 7 to 9 p.m.; Wednesday

evening, after services.

Confessions: Saturdays, 4 to 6

p.m.; 7:30 to 9 p.m.; eves of Holy-

days and First Fridays, same time.

Catechism classes: Wednesdays

at 8 p.m.; Saturdays at 9:30 a.m.

Altar boy meetings, Wednesdays

at 4:30 p.m.

Choir rehearsal, Mondays at 7:40

p.m.

Altar Society meetings, last

Wednesday of month, 8:00 p.m.

CHURCH OF JESUS CHRIST OF

LATTER-DAY SAINTS

Bishop, Raymond A. Larson.

Meeting place, American Legion

hall, 16th and Normandie, Gar-

dena.

Sunday, 10 a. m. Sunday school.

Relief Society and priesthood.

Sunday, 6:30 p. m. Sacrament

meeting.

Wednesday, 7:30 p. m. mutual

Saturday, 10:30 a. m. primary.

ASSEMBLY OF GOD

Paul H. Perry, pastor, 1741 Bor-

der ave.

Morning worship, 10:45 o'clock.

Young People's Meeting, 8:00 p. m.

Old time revival service, 7:30 p. m.

Prayer meeting each morning at

10 o'clock except Saturday, Bible

reading.

Wednesday service, 7:30 p. m.

KEYSTONE ASSEMBLY OF GOD

Sunday school, 9:45 a. m. Morn-

ing worship, 11 o'clock. Young

people, 6:30 p. m. Evangelistic

service, 7:30 p. m.

Midweek services, Wednesday

and Friday, 7:30 p. m.

COMMUNITY PRESBYTERIAN

Rev. John E. Orr, pastor: 2154

24th st. Lomita.

Sunday school 9:45 a. m. Morn-

ing service, 11 o'clock.

Young People's meeting at 6:30

p. m.

Evening sermon, 7:30 p. m.

Prayer meeting, Wednesdays, at

7:30 p. m.



**Stone and Myers**  
FUNERAL DIRECTORS

and Ambulance Service

1001 S. BAYVIEW, TORRANCE, CALIF.

CRAYNE & ASSOCIATES, 1001 S. BAYVIEW, TORRANCE, CALIF.

## "Farther with Christ"

**5 Great Days**

**MONDAY THROUGH FRIDAY**  
**APRIL 16 TO APRIL 20**

**With Rev. Byron**

**Chapman**

of Porterville, Calif.

You are invited to hear Rev. Chapman, who is returning to

Torrance by request!

THOSE WHO SEEK GOD FIND

A PEACE UNKNOWN BEFORE!

Nightly at 7:30

**Central Evangelical Community Church**  
Marcelina and Arlington  
Torrance