

## Kenneth Combs Is Due at Home

PFC. Kenneth T. Combs, son of Mr. and Mrs. A. T. Combs, Torrance, soon will be home on furlough from the Asiatic-Pacific theatre of operations, where he served 29 months with the Army Corps of Engineers.

Service men's stationery? Call Torrance 444 or 443.

## Hospital Cases

Admitted to Torrance Memorial hospital during the past week were the following from this district:

Margaret Cordero, 2123 Crenshaw blvd.

Oscar E. Simmons, 1742 251st st., Lomita.

Mrs. Vesta Sattler, 1606 Gramercy ave.

John Thomas, 24406 Aliene st., Lomita.

## You Are Invited to Witness "The Conversion of Zaccheus"

Friday, Dec. 15, 1944

at the  
**TORRANCE FOURSQUARE CHURCH**  
1207 El Prado

This is an all sound motion picture.  
REV. AND MRS. ARTHUR PEDERSEN.  
Come and bring a friend

## Returning Veterans' Farming Guide Book Issued By County Supervisors

Publication of a guidebook for returning war veterans seeking a livelihood in farming, with a warning that extreme care must be exercised in the selection of such careers, has been announced.

Published by the County Board of Supervisors, the new booklet, titled "What the Veteran Should Know About Agriculture in Southern California," has been prepared as a special supplement to a series of publications on types of farming, locations, soils, water supplies, investment costs, returns and similar data which are available to all persons wanting advice on agricultural opportunities in this region.

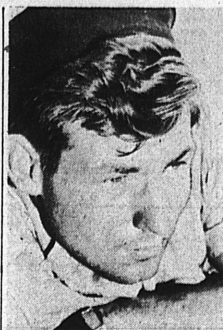
George B. Hodgkin, chairman of the Los Angeles County Chamber of Commerce agricultural committee, said the new

booklet has been issued because "we have a responsibility to veterans who have lost contact with farming or other business affairs during the war, and because we are anxious to be of every possible aid in obtaining for them an accurate understanding of the hazards involved."

The chamber study warns returning veterans that they must give serious thought to their personal adaptability to farm life, and to the likes and dislikes of their families. Next, the veterans are told not to be misled by current high prices for farm products; that, on the average, farming is not a high-profit business, and that the postwar period will undoubtedly bring a sharp deflation both in prices for farm land and prices for farm commodities.

The chamber further warns that settling of veterans on government projects does not mean that the land is free. Projects developed by the U. S. Reclamation Bureau to date require settlers to repay costs of the work, such as the huge Grand Coulee development in the northwest and the Colorado river development in the southwest.

On the other hand, the chamber of commerce points out that end of the war will bring a great many retirements from farming, because emergency conditions have forced thousands of elderly persons into active agricultural pursuits, and the average age of farmers today is far above normal. This situation, the chamber says, means there will be many opportunities for veterans in farming ventures, provided they are given proper advice and information.



ON COMBAT DUTY... Coast Guardsman Daniel J. Wilkes, fireman first class, of 2917 Carson st., Torrance, Calif., Torrance, Calif., is stationed aboard a Coast Guard-manned invasion transport punching holes in the Japs' line of defenses along the road to Tokyo. Wilkes, whose battle station is aboard one of the ship's landing boats, formerly was stationed aboard a Coast Guard combat cutter on anti-submarine patrol. He is a graduate of Torrance high school and hopes to pursue the study of engineering after the war.

## HOSPITAL MOVIES

Operating one of the largest motion picture circuits in the world, the American Red Cross is the past year provided films without charge to Army hospitals which played to ten million hospitalized servicemen and women.

## Dresser Deals Take Over Three More Companies

Acquisition of three new Southern California companies, expanding Dresser Industries, Inc., to 13 members, has been authorized by Dresser directors.

This was announced late Friday at Los Angeles by Arthur R. Weis, vice president of Dresser and president of Pacific Pumps, Inc., Huntington Park, one of the Dresser industries, and at New York by H. N. Mallon, president of Dresser.

The companies to be acquired are the Day and Night Manufacturing Co. of Monrovia; the Payne Furnace and Supply Co., Inc., of Beverly Hills, and Kobe, Inc., Huntington Park. Another Southern California member of Dresser Industries is International Derrick and Equipment Co., Torrance.

The acquisition will be accomplished by an exchange of stock and will be effected about Feb. 1, 1945, if approved by stockholders of the three companies. Dresser stockholders recently authorized an increase in capital stock to 600,000 shares, a portion of which is unissued and will be used to consummate the agreement.

"Products of each of the companies will complement those of the present Dresser units," Mallon said. "Day and Night manufactures a line of gas-fired hot water heaters and Payne produces steel furnaces and floor furnaces for the consumer durable goods field. These will supplement products of the Bry-

ant Heater Co., enabling distributors to offer services over a broader market.

"Kobe, Inc., is a producer of hydraulic deepwell oil pump systems, which will add similar diversification to equipment manufactured by Pacific Pumps, Inc., and International Derrick and Equipment Co."

Servicemen's stationery? Call Torrance 444 or 443.

**Dr. M. Phil. Moore**  
CHIROPRACTOR  
Physiotherapy and X-Ray  
1323 SARTORI AVE.  
Phone Torrance 482



## Everything Arranged In a 30-Second Telephone Call

Yes, a 30-second call to this institution can relieve your family of all the cares and pressing details that demand instant attention when death comes. Nor need worries about cost add to the sorrow and confusion. For all such matters can be determined in advance of need... in consultation with our Advisory Service. This service places you under no obligation and involves no pre-payments. Phone Torrance 195 for complete information.

**Stone and Myers**  
FUNERAL DIRECTORS  
SINCE 1922  
Ambulance Service  
A Local Institution Serving Torrance, Lomita and Vicinity  
BESSIE V. MYERS and J. HUGH SHERREFF, Jr., Owners  
CRAVENS AT ENGRACIA PHONE TORRANCE 195

## Beacon Drug Co. — Transportation Headquarters

**"MEM" is the answer to your search for quality GIFT TOILETRIES for both Ladies and Gentlemen**

Very attractively presented in Novel Gift Containers, "MEM" Toiletries are not only stunning to look at, but the memory of their high quality and exotic fragrances lingers long. At the Beacon, you'll find a complete assortment of these fine "MEM" products in three popular fragrances: "Point Rouge," "Point Dore" and "Point Vert."

### FOR GENTLEMEN

- AFTER SHAVES
- COLOGNES
- TOILET SOAPS

\$1.00 to \$7.50

Plus Tax

### FOR LADIES

- TOILET WATERS
- PERFUMES
- COLOGNES

\$1.00 to \$7.50

Plus Tax

## Many Other "BEAUTY" GIFT IDEAS

HOLIDAY glamour for every Christmas need! Delightfully fragrant toiletries, gleaming compacts. Smartly fitted make-up and beauty kits, too! These are the soul-satisfying gifts she REALLY wants for Christmas—and at the Beacon you'll find a wonderful collection, including the well-known products of such renowned makers as:

- RICHARD HUDNUT
- ELMO
- CARA NOME
- LADY ESTHER
- MEM
- LUCRETIA VANDERBILT
- PONDS
- ISABEY
- L'ORLE
- SUTTON'S
- SARA COOLEY
- GARDENIA OF SOUTHERN FRANCE

And Many Others — You're Sure to Find Just the Gift at the Beacon for YOUR American Beauty

INDIVIDUAL PACKAGES AND GIFT SETS

\$1.00 to \$7.50

Plus Tax



### BOX STATIONERY

The finest selection of fine papers we have seen since the war. Assorted sizes—all popular colors.

50c to \$1.50 box



### GREETING CARDS

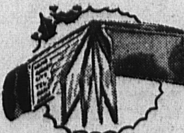
Colorful, Individual Designs by Celebrated Artist—DELRAY

BOX of 21

Assorted Cards

49c

OTHER ASSORTMENTS at \$1.00  
INDIVIDUAL CARDS 5c to 25c



Genuine Leather

BILL FOLDS

Nice Assortment

\$2.00 to \$7.50

### Roger & Gallet Soap and Talc Sets

"Fleur d'Amour" and "Blue Carnation" Fragrances

\$1.25, plus tax

CARA NOME COSMETIC BAGS \$1.25 plus tax

DE LUXE BODY POWDER MITS \$1.50 plus tax

"WEMBDOM" MEN'S TOILET SETS \$1.25 to \$2.50 plus tax

FANCY SOAPS In Gift Boxes 50c to \$2.50



"Air-Tite" Zipper

TOBACCO POUCHES

\$1.50

New Assortment

PIPES—\$1.50 to \$2

## Krug Meets with Tire Factory Representatives

J. A. Krug, War Production Board Chief, met with officials of the four major tire factories Monday in an effort to find solutions to the critical tire shortages brought about by accelerated military demands.

J. M. Miller, U. S. Rubber Co. tire plant manager, speaking for the industry said that all the plants virtually had completed expansion programs which enables them to handle much greater rubber tonnage than they did previously. With the Los Angeles synthetic rubber project producing plenty of rubber, the solution awaits more workers to man the new machinery.

"At the moment 40% of the tire building machinery is idle because of the lack of workers," Miller explained.

Miller revealed that the industry had developed a new principle in rayon tire construction which provides stronger synthetic rubber truck tires and assures substantially greater tire production.

The new construction utilizes a 2200 denier rayon instead of the former 1100 denier type. With twice the number of filaments thus twisted together, the greater fabric strength enables the industry to make a stronger tire with fewer plies. By reducing the amount of rubber used, heat generation, which is a major cause of tire breakdown, is reduced materially. Rupture spread and blow-outs are also reduced to a minimum because of the stronger construction.

In addition the new type cord fabric paves the way to greater truck tire production, according to Miller, because fewer operations are involved, and materials and component parts are reduced.

"While the industry's expansion programs primarily are aimed at breaking production bottlenecks, the added capacity will be needed after the war when delayed consumer demands will keep factories going at top speed," Miller said.

"Men who come to work now, are assured of post-war jobs."

## Help Yourself Laundry

USE OUR DOMESTIC WASHING MACHINES ONLY 60c PER HOUR

DAILY 7 A. M. - 7 P. M.

825 Gardena Blvd.  
GARDENA  
(Rear of Gardena Hotel)

## Western's CHRISTMAS GIFTS for the HOME



Full Spring Construction

### PLATFORM ROCKERS

Finished in walnut or maple color with good hardwood frame. Covered with beautiful tapestries and damasks. G2118

\$46<sup>95</sup>

### OCCASIONAL TABLES

Choice of End or Lamp styles. Hardwood with mahogany finish. G9084, G9120

\$10<sup>95</sup>

### Adjustable High Chair

Solid oak, sturdily constructed. Adjustable Footrest and Tray. Wide spread legs. G1001

\$9<sup>95</sup>

### HIGH CHAIR PAD

Water repellent. Assorted Patterns. G6411

\$1<sup>29</sup>

### Unfinished PLAY PEN

Finish it in your choice of colors. Strong floor, sturdy construction. 41" x 42". G9532

\$6<sup>69</sup>

### Waterproof Playpen Pad

For baby's comfort and safety. G6417

\$2<sup>98</sup>

### Lovely Oilette Floral Pictures

Gorgeous Florals, 22" x 28". In white frames. Choice of several designs. G6605-06

\$1<sup>49</sup>

### TABLE LAMPS

Hand decorated, 6 styles. Lined rayon shades. G5184

\$8<sup>98</sup>



### Boudoir LAMPS

Beautiful glass bases with parchment shades. Attractive styles. G5093

\$3<sup>98</sup>

**Western Auto Stores**  
1273 Sartori Ave.  
Torrance

## Beacon Drug Co.

"The Rexall Store"

1519 Cabrillo Ave., Torrance

Phone 180

HEADQUARTERS: GREYHOUND AND TORRANCE BUS LINES