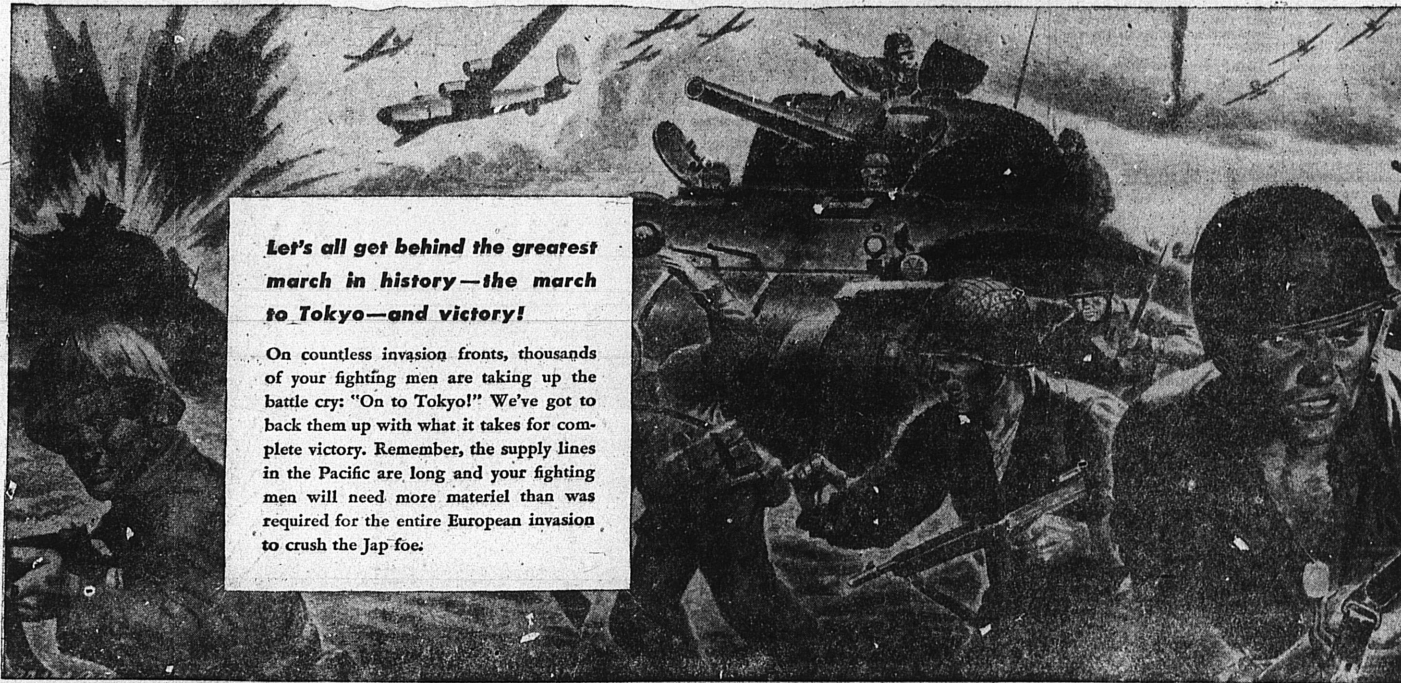


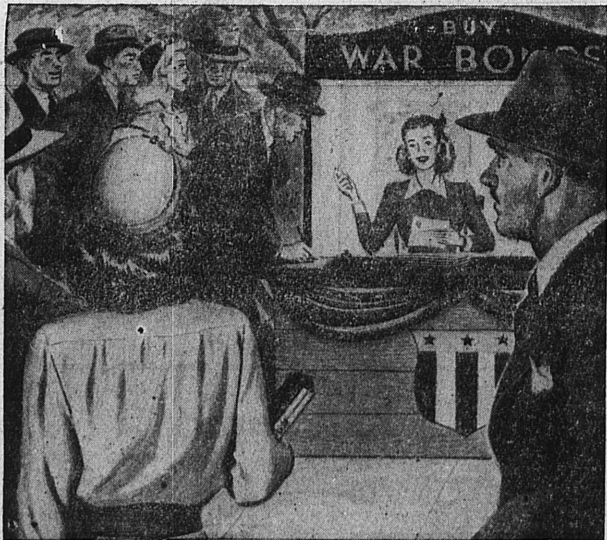
# ON TO TOKYO!



**Let's all get behind the greatest march in history—the march to Tokyo—and victory!**

On countless invasion fronts, thousands of your fighting men are taking up the battle cry: "On to Tokyo!" We've got to back them up with what it takes for complete victory. Remember, the supply lines in the Pacific are long and your fighting men will need more materiel than was required for the entire European invasion to crush the Jap foe.

## Let's Echo that cry with BONDS!



Our boys won't quit until they've reached their goal. Let's not stop buying Bonds until we've reached ours! In this 6th War Loan Drive, the Nation's goal is \$14 billions... our individual job is to buy at least an extra \$100 Bond... another and then another... let's keep on going... let's keep on buying... let's keep on saying it with Bonds...

"On to Tokyo!"



**BUY AT LEAST AN EXTRA \$100 WAR BOND!**

The publication of this Advertisement was made possible by the Cooperation of

**Pacific  
Perforating  
Co., Ltd.**  
1024 ENGRACIA

**MARTIN STAMPING and  
MANUFACTURING CO.**

1230 Border Ave.

**MARTIN TOOL AND DIE  
COMPANY**

1150 Border Ave.

### Postmaster Asks People to Mail Packages Early

Public response to the Post Office Department's "Shop Now! Mail in November" campaign is good but it needs to be better, according to Postmaster General Frank C. Walker.

"Extraordinary wartime conditions face us," Mr. Walker said. "Unless more people buy and mail this month the postal service cannot do its job of delivering all Christmas gifts on time."

"It is not pleasing to us to have to ask the American people to mail packages so far in advance of the delivery date. We do so only because it has to be done. The job is a tremendous one, but we are confident that it will be done because we know from experience that given sound reasons Americans cooperate magnificently."

"Unprecedented shortages of man power and transportation facilities growing out of the war compel early mailing. The Postal Service has given 50,000 experienced employees to the armed forces and 300,000 railroad workers have gone to war. Equally serious is the fact that rail and other transport facilities are taxed to the limit with the great burden of war traffic which all of us know must take precedence."

"In a great number of our 43,000 post offices the manpower situation is critical. The 20,000 extra workers whom we normally recruit to handle the swollen volume of Christmas mail were able to work long hours of overtime and to do heavy work. This cannot be expected from the women and high school boys and girls to whom in large part we must look this year to meet the situation."

"The way in which everyone responded in making it possible for us to handle a volume of 70,000,000 parcels for the armed forces overseas leaves no doubt in my mind that the November Christmas mailing will be equally successful. I ask for the help of the press, radio, business advertisers, civic groups and all Americans in making it possible for the Postal Service to do its work."

"We urge everyone to buy now, mail in November and mark gifts 'Do Not Open Until Christmas.'"

### Sgt. Sullivan Is Machine Gun Section Leader

Staff Sergeant Roy W. Sullivan, son of Mrs. C. G. Sullivan, 1919 1/2 Gramercy st., Torrance, is a machine gun section leader in a heavy weapons company of the 40th Infantry Division of New Britain.

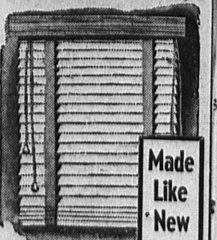
Sgt. Sullivan, inducted Mar. 3, 1941, with California National Guard, has served overseas since Sept. 25, 1942, including previous duty in the Hawaiian Islands and the South Pacific.

"During the past eight months he has been helping to make escape proof the trap which surrounds the Japanese garrison at Rabaul, New Britain, in the Southwest Pacific."

Sgt. Sullivan is entitled to wear the Asiatic-Pacific theatre ribbon and four overseas bars each signifying six months service in the Pacific. Before entering the Army he assisted his brother, Art C. Sullivan, in operating a gasoline station at Carson and Border sts. in Torrance.

Wedding and personal stationery of distinction are easily ordered by calling in person at 1336 El Prado, Torrance, or telephoning Torrance 444 or 443.

### Venetian Blinds



Repaired Repainted  
New Cords and Tape

Call Redondo 8570  
**BAY CITIES  
VENETIAN BLIND CO.**  
1402 Camino Real, Hermosa