

GIVE THANKS...

... that down through the years we have been able to maintain the things so important to us... the freedom to print and to read what we choose... to voice our own opinions and listen to those of others... to worship and pray and go to the church of our faith... to vote for those we wish to have represent us in our government... the freedom to work and play in the way that will make us happiest and most successful. These things are part of our heritage—give thanks that we have kept them.

FRIENDLY CREDIT
**NATIONAL
HOME APPLIANCE
Co.**

1317 S. Tori — Phone 78

WE HAVE THE SYNTHETIC TIRE THAT'S

3 YEARS AHEAD OF ALL OTHERS!



It's the
**B.F. Goodrich
SILVERTOWN**

**BACKED BY 3 YEARS'
EXTRA SYNTHETIC
TIRE EXPERIENCE!**

The three-year head start B. F. Goodrich has in tire-making experience is reflected in today's synthetic B. F. Goodrich Silvertown. Already proved over BILLIONS of miles, it is making friends everywhere.

Hundreds of satisfied users report at least as many miles as they got from pre-war tires. Others say these new Silvertowns seem to be the best tires they ever had!

If you're eligible for new tires, drive in—let us help you apply for proven B.F. Goodrich Silvertowns!



Now on Hand—Complete Stock of All Popular Sizes!

Harvel's SUPER-SERVICE
1530 CRAVENS TORRANCE

**B.F. Goodrich
TIRES**

County Tax Rate for This Year Set At \$1.1798; Lowest In Six Years

Los Angeles county's \$1.1798 county tax rate for general purposes this year is the lowest rate the county has levied during the six-year period 1939-40 to 1944-45, California Taxpayers' Association stated today, making public its analysis of the trend of county tax rates since World War II started.

In 1939-40, the first year of the period under discussion, the county rate for general purposes was \$1.4973 per \$100 of assessed valuation. High point for the six-year period was in 1939-40.

For the six years the county rate for general purposes has been as follows:

1939-40	\$1.4973
1940-41	1.4749
1941-42	1.4627
1942-43	1.3489
1943-44	1.1908
1944-45	1.1798

Four California counties, Colusa, Los Angeles, Placer and San Diego, have had a decrease in county tax rate for general purposes during every year of this period. Three counties, Fresno, Orange and Sacramento, have shown no increases, remaining unchanged or going down every year. Four counties, Contra Costa, Kern, Modoc and Ventura, went down every year until 1944-45, when they went up. Not a single county showed an increase every year. Orange and Plumas counties have shown no change in their rates for the past three years.

This year 24 California counties show their lowest county tax rate for general purposes during the last six years, the association found. These counties are Alameda, Alpine, Amador, Butte, Colusa, Fresno, Glenn, Humboldt, Lassen, Los Angeles, Madera, Mendocino, Napa, Nevada, Orange, Placer, Plumas, Riverside, Sacramento, San Diego, San Joaquin, Siskiyou, Tehama and Tuolumne.

In 1943-44 26 counties were at their low tax rate for the six-year period. These were Contra Costa, Imperial, Kern, Lake, Mariposa, Merced, Modoc, Mono, Orange, Plumas, San Benito, San Bernardino, San Luis Obispo, Santa Barbara, Santa Clara, Santa Cruz, Shasta, Sierra, Stanislaus, Sutter, Trinity, Tulare, Tuolumne, Ventura, Yolo and Yuba.

For 1942-43, low point was reached in Inyo, Lake, Orange, Plumas and San Mateo. In 1941-42 no county was at its low.

In 1940-41 Bel Norte, El Dorado and Sonoma showed lows. For 1939-40, the first year included in this study, Calaveras, El Dorado, Kings, Marin, Monterey, San Francisco city and county, Solano and Sonoma were at their lows. El Dorado and Sonoma held their lows for the first two years, 1939-40 and 1940-41.

Business, professional or personal cards are readily obtainable at the Torrance Herald office. Phone Torrance 444, 445.

AM SEEDS

The ANSWER to a FARMER'S PRAYER...
Buy Them at Your Dealer

**ACCELER-MUSSER
SEED COMPANY**
BRANCHES IN
BRAWLEY, GARDENA, SALINAS,
VISALIA, SAN DIEGO, SANTA MARIA



SHIP IS SUNK... W. H. (Bud) Howe, aviation metallurgist, 2/c, attached to the U.S.S. Gambier Bay, escort carrier, has not been heard from here since the Battle of the Philippines. The Gambier Bay was one of six ships reported lost in a recent naval release. Howe is the son of Mrs. Irene Howe of 1844 26th st., Long Beach, a member of the Torrance Herald staff. Since the family has no news to the contrary, in line with the Navy Department's announcement of casualties, it is generally accepted that Howe has been saved.

City Income For 1942-43 Was Highest

Torrance city receipts for 1942-43 totaled \$320,878, compared with 1941-42 receipts of \$319,881. Cost payments of the city government for 1942-43 totaled \$288,317, compared with \$306,030 for 1941-42. These data, the latest available, were made public today by California Taxpayers' Association as part of its analysis of local government finance during the war years. Both receipts and payments exclude public service enterprise, special assessment, debt obligation and trust transactions.

Of the 284 incorporated municipalities, 200 showed decreased cost payments for 1942-43 and 84 showed increased cost payments for 1942-43 compared with 1941-42. Throughout California, the cities spent \$128,308,650 during 1942-43, compared with \$134,366,229 in 1941-42, a drop of about \$6,000,000. Receipts of California cities for 1942-43 totaled \$132,475,450, compared with \$133,290,441 for 1941-42, a decrease of less than one million dollars when the two years are compared. Biggest single municipal expenditure was for protection to persons and property, which took \$46,712,872 of the \$128,308,650 total. Biggest source of city revenue was the general property tax, which brought in \$80,139,080 of the \$132,475,450 city receipts in 1942-43.

"Where the city fathers are not confronted with the necessity of laying away reserves for needed capital outlays," the Taxpayers' Association said, "there is no question that any excess monies in the treasury should be used for tax reduction this year."

THANKSGIVING GUESTS
Mr. and Mrs. L. M. Fernley's guests will be her father, J. S. Donelson, and Mr. and Mrs. H. H. Gartner, all of Beverly Hills, and Mrs. E. E. Hatter (Connie Fernley).

Servicemen's stationery? Call Torrance 444 or 445.

Torrance High Variety Show December 7

By **SUNNY JUNE MORRIS** and **VIRGINIA FLETCHER**
Student interest at Torrance high school runs high in the variety show that will be presented in a vaudeville program on Thursday, Dec. 7. One hundred pupils felt the impelling ambition to appear before the bright lights of the stage as try-outs on Friday attempted to sift the talent offered. Most of the girls who tried out were singers, but instrument and variety acts are well represented.

Mrs. Margaret Etchegaray and Miss Lois Kelley, social living teachers, are sponsoring the variety show. Miss Anna Mae Alken, teacher of the newly formed boys' glee club, is training her group for the minstrel show, complete with end men and all their jokes. Louis Sauter, orchestra leader, will be responsible for the music and Ivan Grigsby, with his stage crew, will manipulate the colored lights. Mrs. Margaret MacKinnon, teacher of dramatics, will act as director of the entire production.

ELEMENTARY P.T.A. COMMITTEE MEETS

A committee for making recommendations for revising the by-laws of Torrance Elementary P.T.A. met at the home of Mrs. H. R. Lee Nov. 8.

Bert Smith Is Honorary Rotary Club Member

Bert Smith, Torrance high school student body president, has been voted an honorary member of the Rotary Club.

Last June, Bert was sent to Sacramento to the "Boys State" by the Rotary Club. There he made many new friends, got right into the swing of political activities and made his mark for himself and for Torrance.

He was elected the candidate for the Federalist party for Lt. Governor. In the final election he bowed to the Whig candidate by the close margin of 25 out of some 750 votes. He was appointed to the Governor's Council of Vocational and Professional Standards, which has the responsibility in the state for technical licenses.

"Boys State" lasted from June 22 through June 29. Besides the fun of it, Bert returned with a deeper understanding of our democracy and how it works out in the American way of life.

Harold E. Perry, principal of Torrance high school, also belongs to the Rotary Club. Between them they make live contacts for school and community.

Bert says he feels proud being an honorary Rotarian, and thinks they are a swell group of men.

RELIEF FOR MOTHERS SEEN AS MORE CHILDREN'S SHOES HERE

Relief from the existing shortage of infants' and children's shoes may be forthcoming within a short time, William A. Molster of Washington, national shoe rationing chief, indicated in Los Angeles today.

Molster, here with Joseph B. Charde, head of the OPA shoe branch operations section for a check-up of the Southern California shoe situation, told of plans under way for greater production of shoes for children. These plans are now being worked out by officials of the OPA, War Production Board and Office of Civilian Requirements, he said.

An all-time high will be reached in production of infants' footwear this year, Molster said, and 41 million pair of children's and misses' shoes are expected to be turned out by the end of the year. This is but one and a half million less than the pre-war peak year.

However, the shortage still exists as the birth rate has increased in recent years and children are wearing more shoes.

Mothers who have complained of inability to obtain white shoes for babies will soon find an oyster shade shoe on the market. Tanning of leather for this type shoe was made possible through lifting of bans on tanning ingredients heretofore used by the Navy for military supplies.

Viewpoint of mothers frantically hunting for the types of children's shoes they desire was expressed in a letter from Mrs. Esther H. Walker, a vice president of the California Congress of Parents and Teachers, received here by Molster today. She called attention to the short-

age and asserted deterioration of quality.

Promising immediate action with the Office of Civilian Requirements to ascertain if changes should be made in the number of children's shoes allocated to this area, Molster took exception to Mrs. Walker's charges of inferior quality.

"Actually," he said, "the best leather not reserved for military uses is being allocated to manufacturers of children's shoes. The material and workmanship going into children's footwear now is as good as before the war."

"The difference is that when mothers have to use ration coupons to buy children's shoes they realize how fast the shoes wear out under hard usage."

Liquor Dealers Are Accused Of Over-Charges

A complaint asking \$57,265 in damages against J. V. Nanny, doing business as the Merchants Wholesale Co., 432 S. Wall st., Los Angeles, and several associates for alleged sales of liquor at over-ceiling prices was on file in U. S. District Court today.

Named with Nanny were a brother, H. H. Nanny, Charles J. Puccio, George Santer and Philip Blumenthal. The action alleges that in several sales to retail liquor dealers they collected as high as 100 per cent over the maximum legal ceiling prices. Stanley Jewell, OPA enforcement attorney, prepared the action.

ANTELOPE TAKEN

First reports coming to the division of fish and game on the antelope hunt reveal that 48 antelope were taken on opening day. The largest buck checked weighed 114 pounds dressed and the lightest in weight was 60 pounds. Weather reported warm and hunting generally good.

SOUTHAMPTON BAY

A few large fish have been caught in Southampton Bay recently and a few ducks are coming in. Striped bass fishing has been poor in San Pablo Bay; doves are reported scarce there; deer hunting has been poor, but ducks are coming in and cat-fishing is reported good.

KNOW YOUR AMERICA!

HOW DID THE IDEA OF SERVING TURKEY ON THANKSGIVING DAY ORIGINATE?



We have much to be thankful for this Thanksgiving. The success of our Armed Forces on the Western Front and in the Philippines means another day nearer to final and complete victory... and a lasting peace. So, again this year... as the original Colonists, we bow our heads in thanks.

ANSWER

Colonists used them for their dinners. Wild turkeys were plentiful, so the (Turn Upside Down to Read)

"A FRIENDLY TORRANCE INSTITUTION"



**TORRANCE
NATIONAL BANK**

Torrance California

MEMBER OF FEDERAL DEPOSIT INSURANCE CORP.

NOW **RELIABLE MOVERS**
**Complete
MOVING - STORAGE
SERVICE**

—for Folks in or Near Torrance

ANYTHING - ANYWHERE - ANYTIME

MILLER
**TRANSFER & STORAGE
COMPANY, INC.**
New Office and Warehouse
1648 Cabrillo - Torrance

**PHONE
1231**

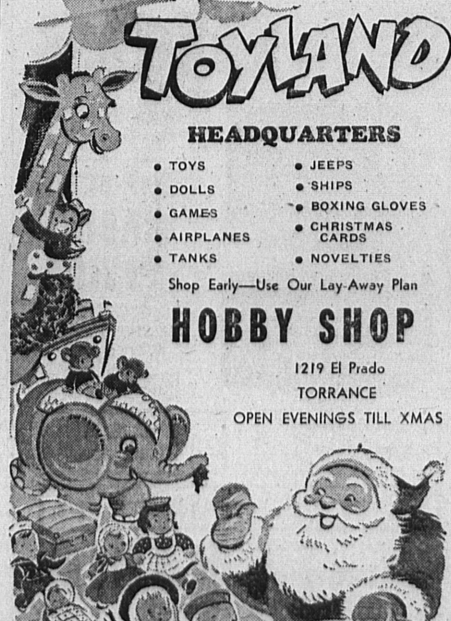
—If No Answer... Call
Torrance 1763-R

**Complete Storage Facilities
ALL STORAGE INSURED**

**WAR BOND BUYERS
ARM OUR FLYERS!**



BANK OF AMERICA



HEADQUARTERS

- TOYS
- DOLLS
- GAMES
- AIRPLANES
- TANKS
- JEEPS
- SHIPS
- BOXING GLOVES
- CHRISTMAS CARDS
- NOVELTIES

Shop Early—Use Our Lay-Away Plan

HOBBY SHOP

1219 El Prado
TORRANCE
OPEN EVENINGS TILL XMAS