

Longren Group Forms Bowling League Here

The day shift of Longren Aircraft in Torrance has formed the Twilight Bowling League. There are eight teams, with the Timber Wolves in the lead. Each Thursday night the teams bowl with some members of Longren as rosters.

The teams are: Timber Wolves—Bill Swihart, Jerry Miller, Tom Moore, Fred Stevenson, Hetta Lahey. Ten Pins—Donald Bell, Bee Kruger, Ted Reynolds, Earl Lawson. Lucky Strikes—Roy Browne, Bill Brockway, Joan Tearle, Paul Irvine, Mary Brown. Alley Rats—Nadine Paour, Frank Connors, Loran Irvine, Art Rye, Corene Winkler. Gutter Bums—Marvin Loper, Thora Yoder, Jean Gould, George McWilliams, Edna McMillan. Wood Splitters—Wendell Walker, Zenora McFarland, Max Pier, Bill Lafferty, Harriett Leech, Jim Oliver. Alley Cats—Sid Weaver, Keith Ray, Faye Graye, Claude Williams, Norma Condon, Virginia Grana. Pin



TEACHING FRENCH . . . Pvt. Edwin B. Brown, Jr., son of Edwin B. Brown, business manager of the Torrance Herald, is teaching French language to troops at Camp Butler, N. C., and a letter just received by his father states that he probably will be going overseas soon.

Private Brown, assigned to Headquarters Company, 3rd Bn., 353rd Inf., at Camp Butler, is in intelligence work and speaks and writes French, Spanish and Italian fluently.

He will be a correspondent for the Torrance Herald, credentials having been sent to him.

Quarantine on Mussels Is Continued

The quarantine established on May 1, 1944, of all mussels from the ocean shore of California including the Bay of San Francisco, is extended beyond Oct. 31, 1944, and until further notice, by the State Department of Public Health.

This extension of quarantine is the result of nine cases of mussel poisoning, with two deaths in San Mateo county.

Setters—Howard Olson, Emily Bogunovich, Violet Leech, Harry Plumb, Marguerite Ewart.

Injuries are Handicap to Torrance Eleven

Torrance varsity has had more than its share of injuries to the team this year, handicapping it just when victory seemed in sight.

In the opening game of the season with Gardena, Bert Smith suffered an arm injury that kept him out of the game for two weeks. At the Banning game he got a lip cut that took four stitches to patch up.

Sam Intermill was the victim of a hip injury during the first quarter of the Gardena game that kept him out of the San Pedro game also.

Due to serious leg injury Marvin Kent received in the San Pedro game he was out of the Narbonne game except for a couple of plays. Just as passes were clicking in the Banning play he was again eliminated, this time by a "Charley horse."

Paul Hoke dislocated his elbow and thus was kept out of the rest of the Gardena game and the San Pedro game. Gerald Godard injured his ankle in the Banning game.

Lt. W. E. Tinch Is at Co-Pilot Training Field

Second Lt. Warren E. Tinch, son of Mr. and Mrs. Earl F. Tinch, 25309 Walnut st., Lomita, is assigned to Ardmore, Okla., 2nd AAF flying field, where he is completing final phase training as co-pilot of a heavy bombardment unit.

Tinch entered the service Dec. 2, 1942. He received Army Air Forces flight training at Hancock College of Aeronautics, Santa Maria, Calif., and California Aeroflight Flying Academy, Ontario, Calif. MAF, Marfa, Texas, KAAF, Kingman, Ariz. He received his commission June 27, 1944.

Before entering the service he was an electrician.

STACEY GRIFFITH . . . a staff sergeant, has received his third Oak Leaf Cluster to the Air Medal, but went "through hell" to get it, he said in a letter to Miss Irene Mills of Torrance High school teaching staff.

RALPH KRIDER . . . a lieutenant serving with A.A.F. at LeMoore Field, where he is a pilot on a B-24, has been visiting at the John Armstrong home, 1218 Amapola ave.

EARL H. WILSON . . . son of Mr. and Mrs. L. H. Wilson of 1546 W. 218th st., is stationed at San Diego Naval Training Center. His friends may write him at Co. 44-553, U. S. N. T. C., San Diego 33.

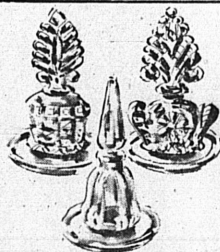
MELVIN BENNER . . . a corporal, left recently for his base at Camp Crowder, Mo., following a ten days' furlough with his parents, Mr. and Mrs. J. J. Benner of 1728 Andrea ave.

LESLIE C. FOSTER . . . a sergeant in A.A.F., stationed at Sedalia, Mo., has been enjoying a 16 days' furlough with his parents, Mr. and Mrs. Milton F. Foster of 911 Cota ave.

PENNEY'S

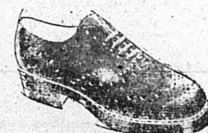
A Fact About Penney Dress Fashions!

It seems that lots of women who used to "shop around" When once they come to Penney's, have generally found, Their very type of dresses, so smart and fashion-true, That now they always come to us, when they want something new



Complete With Mirror Tray!
TWO-PIECE VANITY SET
98c

A favorite with the young Junior Miss and her charming older sister. Gleaming mirror holds a sparkling glass perfume bottle topped with a huge stopper. A welcome accessory for any dressing table!



TOWNCRAFT DELUXE
4.79

Popular sport and dress styles in sturdy, long-lasting leather. Army russet, antique, black.

FINE BROADCLOTH

No-Starch Nucraft® Collars
1.98
Fine Broadcloth Shirts in wavy stripes against colored or white backgrounds. Roomy proportionate fit. Sanforized.

RAYON TIES—98c

Satin Finish—Wool Lined
Neat all-over patterns or feathery swirls. Rich finish. Good colors!

SOCKS—3 prs. 1.00

Mercerized Cotton or Rayon
Clocks, verticals, horizontals or plaid patterns. Reinforced.



HANDBAG FASHIONS
—For All-Season Wear!
4.98

Give new life to your accessory wardrobe with a smooth leather or rich fabric carry-all handbag. Black or brown.



NEW WINTER GLOVES
In Smooth Capeskin
2.98

Penney's newest selection of leather gloves will give you long service and look right with every day-time costume.



"DURATION SHEERS"
Round-the-Clock Duty!
80c

Smooth fitting, full-fashioned hosiery that will give you beauty—full, duty—full service. Clear, wear-well rayons. Reinforced adequately.



For a Sparkling Personality!
HOLIDAY DRESSES!
7.90

Eye-catching rayon crepe frocks in sooty black subtly shirred and gored to accent all your natural grace. Sequin sprinkled shoulders or brilliant color inserts. Regular and half sizes.

For That Feminine Look!
VELVETS, GABARDINE
9.90

Alluring crush resistant rayon velvets. Unusually fine gabardines in princess styles. Just right for office wear and feminine enough for that dinner date too.

BETTER APPAREL REDUCED!

REDUCED ITEMS

MEN'S—FOREST GREEN SHADE	Ceiling 8.90	
100% WOOL GABARDINE PANTS		5.00
MEN'S	Ceiling 3.90	
WOOL-LINED VESTS		2.88
MEN'S	Ceiling 29.75	
100% WOOL SUITS		23.88
WOMEN'S FUR-TRIMMED	Ceiling 30.13	
100% WOOL COATS		24.88

NEW ARRIVALS

FIRM WEAVE		
COTTON PRINTS	yd.	25c
36-INCH WIDE		
HEAVY-WEIGHT PRINTS	yd.	39c
81x99—FIRSTS		
NATION-WIDE SHEETS		1.19
IVORY SHADE—42x78		
CURTAIN PANELS		2.15
CHENILLE—21x36		
BATH MAT SETS LID COVER TO MATCH		2.98
72x84		
PART-WOOL BLANKETS		6.90



Do People Look Your Way?
THE HEADS HAVE IT
2.98

HATS—soft felts, softly fitting your head, in softest colors. Sometimes a snatch of veil, sometimes a garland of felt flowers. The new Casablanca brim for an exotic touch!

Gay Pompadours
Tiny Berets
Soft Brims
Smooth Calots

It's the B.F. Goodrich SILVERTOWN

... backed by 3 years' EXTRA synthetic tire experience

No wonder satisfied users say, "As good as pre-war tires."

THREE FULL YEARS before any other company, B. F. Goodrich sold tires made with more than 50% synthetic rubber to American car owners. These first tires made history in the now-famous 80-million-mile road test.

The experience gained in those three extra years is reflected in the performance of today's synthetic B. F. Goodrich Silvertown—already proved by BILLIONS of miles of service! Hundreds of users have written . . . many reporting as many miles as they ever got from pre-war tires!



WE HELP YOU APPLY!

You may be eligible for these new tires. If so, we'll fill out and handle your application. And, when granted, we'll equip your car with these proven synthetic B. F. Goodrich Silvertowns.

NOW ON HAND—COMPLETE STOCK OF ALL POPULAR SIZES!

Harvel's Super-Service
1530 CRAVENS TORRANCE

B.F. Goodrich TIRES

We Will Be Open ALL DAY Saturday!