

## Infantrymen's Badge Is Won by Richard Roark

Private First Class Richard B. Roark, son of Mr. and Mrs. B. W. Roark, 20411 S. Vermont st., Torrance, Calif., has been awarded the Combat Infantryman's Badge for exemplary performance in action with the First Cavalry Division during the campaign for the Admiralty Islands.

A member of a scouting unit, he took part in many patrols deep into Japanese-held territory. Roark, who has been in the service since August, 1943, took his basic training at Fort Riley, Kansas. Before he entered the Army, he attended the University of Arizona.

Steelhead fishing is reported good in the Eel River.



## Feather Your Nest With WAR BONDS

War Bonds top all as an investment and a saving! When the time comes for you to build your new home, the money you have saved by buying Bonds will come in mighty handy. With War Bonds, the FHA Plan, and you can't fail on your postwar plans for a better living.

**TORRANCE LUMBER CO.**  
1752 BORDER AVE.  
TORRANCE



**AT SCHOOL**... Ensign Gerald E. Shafer now is in Flint, Mich., studying amphibious engineering at General Motors Institute. His wife, Marie, and children, Jerry and Phyllis, live at 1837 W. 256th st. His parents, Mr. and Mrs. J. M. Shafer, live at 1833 W. 256th st. Ensign Shafer was nine months in the Pacific as warrant officer on a Liberty ship. He had previous Navy service and re-entered two years ago as machinist's mate, 2/c. He received his commission as Ensign in June of this year.

## LESTER WORKMAN HOME FROM 32 MONTHS OVERSEAS

Marine Lester Earl Workman, 1712 Martina st., Torrance, has returned from 32 months' overseas service, and is now at the Marine Base in San Diego, Calif.

Workman, a field cook with the Second Marine Division, took part in the Saipan and Tinian campaigns.

**MONROE MEAD**... a private, who has completed 27 months' service with the Army Coast Artillery Corps in the Asiatic-Pacific theatre of operations, will arrive soon for a furlough with his parents, Mr. and Mrs. Roy Mead of 2161 Sierra st.

## Fred Quaggin, Chief Engineer Who Lost His Life When Ship Was Sunk, Is Honored With Mariner's Medal

### Kenneth Paige Completes Navy Diesel Training

Bluejacket Kenneth M. Paige, 27, 1572 Carson st., Torrance, Calif., received recognition as eligible to qualify for the petty officer rate of motor machinist's mate third class during recent graduation ceremonies at the Naval Training School (Diesel) on the Iowa State College campus, Ames, Iowa.

Selection to attend the specialty school is based on the results of recruit training aptitude test scores. The course of study includes the use, operation and maintenance of diesel engines. A theoretical phase is concerned with diesel engine theory, electrical fundamentals and machine shop operation.

The graduate is now awaiting further duty orders to sea or to some shore station.

Chief Engineer Fred Quaggin, prominent Torrance resident who headed the call for experienced



mariners and joined the Merchant Marine in 1942 only to lose his life when the ship on which he was serving was torpedoed in the North Atlantic has been posthumously honored with the award of the Mariner's Medal.

Admiral E. S. Land, administrator of the War Shipping Administration, this week presented the medal to Mrs. Emma Quaggin, the widow who, with her three children, never has given up hope for Quaggin's return.

Prior to entering the Merchant Marine, he was night superintendent of the Hydral Corp., in South Torrance, and was a member of Rotary club and St. Andrew's Episcopal church. In his earlier life, he had served on big ocean liners.

The letter to Mrs. Quaggin from Admiral Land follows: War Shipping Administration Washington August 22, 1944.

Mrs. Emma Quaggin, 1609 Amapola ave., Torrance, Calif.

Dear Mrs. Quaggin: By authority of the Congress of the United States, it is my honor to present to you, the wife of Chief Engineer Fred Quaggin, the Mariner's Medal in commemoration of the greatest service anyone can render cause or country.

Chief Engineer Quaggin was lost when his ship, the SS Theodore Dwight Weld, was torpedoed and sunk by the enemy Sept. 20, 1943. He was one of those men who today are so gallantly upholding the traditions of those hearty mariners who defied anyone to stop the American flag from sailing the seas in the early days of this republic. He was one of those men upon whom the nation now depends to keep our ships afloat upon the perilous seas—to transport our troops across those seas; and to carry to them the vitally needed material to keep them fighting until victory is certain and liberty secure.

Nothing I can do or say will, in any sense, requite the loss of your loved one. He has gone, but he has gone in honor and in the goodly company of patriots. Let me, in this expression of the country's deep sympathy, also express to you its gratitude for his devotion and sacrifice.

Sincerely yours,  
E. S. Land,  
Administrator.



**PROMOTED**... It's now Captain Frank Hincley of Lomita, his promotion from first lieutenant having been revealed in a letter from Mrs. K. V. Hincley, now of Silverton, Ore., to the Torrance Herald. Capt. Hincley has been a navigator for a two-star general in New Guinea.

Servicemen's stationery? Call Torrance 444 or 443.

Servicemen's stationery? Call Torrance 444 or 443.

## 'V' Day Plans For Torrance Are Modified

At a meeting of the retail merchants Wednesday noon, it was voted to exempt all drug and food stores from any "V" Day plans for the community.

The spoils of foodstuffs and the lack of medical supplies would prove a great hardship to the shopping public, it was pointed out by Hillman R. Lee, chairman of the group, and should not be allowed. The Torrance drug and food stores will each work out their individual plans for remaining open and will advise their customers accordingly.

**TOM RUSSELL**... was recently presented with a citation for service in L.A.P.E. engineers.

## Three Local Boys Enter Maritime Training School

Among the most recent enrollees to enter Maritime Service School at Catalina Island from a group of 60 men and boys sent by the Wilmington enrolling office, are three from Torrance and vicinity.

The following men recently entered the school: Joe Bailey Huckabey, 17, 717 Harbor Hills, Lomita; Walter Donald Johnson, 17, 1544 W. 205th st., Torrance, and Edward Samuel Bergeron, 16, 24212 Ocean ave., Waltham. Needed are boys 16 to 17½ and men 26 to 30 years of age to train for jobs in the deck, engine, steward, radio and pursers departments of merchant marine vessels. Those entering the school are given their board, room and clothing allowance and a salary. They ship in the mer-

**JOHN REYNOLDS**... a private, has arrived from the Asiatic-Pacific theatre of operations, where he has served with the Army Coast Artillery Corps for the past 21 months. He is a son of Mr. and Mrs. H. K. Reynolds of 1956 Plaza Del Amo.

chant marine at the prevailing wage scale.

**TOM GORDON RUSSELL**... a private, 1/c, U.S.M.C., is convalescing at a base hospital from injuries suffered recently in the South Pacific. He has participated in three recent major battles according to his letter to Mrs. R. V. Holman of 1635 Crenshaw blvd., a neighbor of his family here.

—FIGHT BY HIS SIDE—

## MONEY to LOAN



on RESIDENTIAL and Income Properties

**LINCOLN SAVINGS & LOAN ASSOCIATION**

Phone Michgar. 4335

615 S. Spring St.

Los Angeles, Calif.

## SAFeway FALL EVENT

## Stock up NOW

Brisk days will soon be here, and with them will come a need for heavier meals. Stock up now on the foods that you will be needing. Buy them at Safeway, where prices save you money, and where quality is guaranteed. Visit your neighborhood Safeway during this big Fall Event!

### NON-RATIONED FOODS

Suzanna	Pancake & Waffle Flour, 20-oz. 9c	40-oz. 16c
Aunt Jemima	Pancake Flour, 13c	25c
Sleepy Hollow Syrup	16-oz. bottle	20c
Molasses	Brer Rabbit Brand Green label, 16-oz. 25c	19c
Lunch Box	Sandwich Spread 1/2 pint jar, 16c	26c
Grape Jam	Tea Garden, 1-lb. jar	24c
Peanut Butter	Howdy Brand, 1-lb. jar	23c
Beverly	Smooth grind Peanut Butter, 1-lb. jar	23c

### COFFEE PRICES

Airway Coffee	Ground to order, 1-lb. can	20c
Nob Hill Coffee	Rich Blend, 1-lb. can	23c
Edwards Coffee	Drip or regular, 1-lb. jar	27c
Hills Coffee	Red Can Brand, 1-lb. jar	33c

### TYPICAL SAFEWAY VALUES

Krispy Crackers	Salted 1-lb. Soda, 30c	18c
Malted Milk	Carnation, plain 16-oz. or chocolate jar	39c
Baby Foods	Clapp's, 2 cans 13c	13c
Ken-L-Biskit	Now "Point Free" Clapp's Junior Foods, 2 cans 17c	24c
Friskies	Kibbled Dog Food, 4 1/2-lb. cans	45c
Ohio Matches	Cube or Meal Dog Food, 4 1/2-lb. cans	28c
Ivory Soap	Blue Tips, Carton of six	9c
Lux Toilet Soap	Personal size, 2 bars	20c
Pet's Soap	Granulated, 33-oz. pkg.	26c
Dash Soap	Plenty of suds, 18-oz. pkg.	26c
Old Dutch	Household Cleanser, 2 14-oz. cans	15c
Sunbrite Cleanser	12-oz. can	9c
White Magic	Liquid Bleach 1/2 gallon, 16c	9c

### POINTS EACH

— Blue Points —

(60) Apricots Masterpiece 30-oz. 21c

(30) Tomatoes Whole, unpeeled can Gardendale No. 2 1/2 13c

(10) V-8 Vegetable Juice Brand 18c

— Red Points —

(1) Cherub Milk Pure Tall 9c (Small cans, 2 for 9c, plus 1/2 point each)

(2) Sunnybank Vegetable Margarine 1-lb. 18c

(2) Dalewood Vegetable Margarine 1-lb. 18c

### POINT FREE GRADE

(5) BEEF ROAST Grade AA or A lb. 28c Grade B lb. 26c Grade C lb. 23c

Choice of Seven Bone or Round Bone.

**PLATE BOILING BEEF** Economical, "No-Point" cut of guaranteed beef. Cook with vegetables. lb. 19c

**BEEF SHANKS** Boil or bake these low cost cuts. END CUTS lb. 10c CENTER CUTS lb. 19c

**FRESH GROUND BEEF** Ground under State Government inspection. Packed in sanitary casing. lb. 29c

**GRADE A FRYERS** New York Style poultry. Treat your family with golden fried chicken! GRADE B FRYERS, Lb. 44c lb. 46c

**GRADE A HENS** New York Style poultry. Make perfect chicken fricassee. Buy today. GRADE B HENS, Lb. 40c lb. 41c

NOTE: Figures in parentheses indicate red points per pound. Some Safeways do not carry all grades listed.

### SEND YOUR SERVICE MAN THIS WELCOME GIFT

## GOLDEN FRUIT CAKE

Two Pound Size \$2.00

Made with lots of fruit by Clark of California. Packed for mailing. October 15 is final date for mailing overseas!

(3-lb. Mailing wt.)

### FARM-FRESH PRODUCE

Select your own fresh fruits and vegetables from the large selection at Safeway. Rushed from farm to store — full of vitamins!

<b>BELLFLOWER APPLES</b>	lb. 8c
<b>PERSIAN MELONS</b>	lb. 4c
<b>BLACK RIBIER GRAPES</b>	lb. 11c
<b>SOLID CABBAGE</b>	lb. 5c
<b>FRESH CELERY</b>	lb. 12c
<b>YOUNG CARROTS</b>	lb. 5c

### BAKING ITEMS

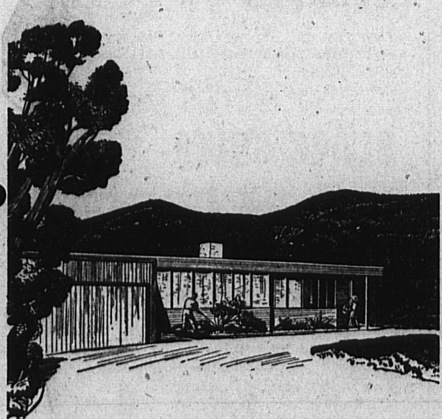
Kitchen Craft Flour	10-lb. sack	53c
Pillsbury Flour	5-lb. sack, 28c; 25-lb. sack, \$1.23	59c
Royal Satin	Vegetable Shortening	1-lb. 22c
Crisco Shortening	Three-pound economy size jar, 60c	24c
Fluffo Shortening	1-lb. jar	19c
Mazola Oil	Pint 28c	56c

### CEREALS

Ry-Krisp	7 1/2-oz. pkg.	10c
Cheerios	Tasty new breakfast food	7-oz. 11c
Kellogg's Pep	8-oz. pkg.	9c
Raisin Bran	Skinner's Brand, 10-oz. pkg.	10c
Wheat Meal	Grape-Nuts Brand, 30-oz. pkg.	21c
Wheatena	"Hot serve" breakfast cereal, 22-oz. pkg.	22c

**SAFeway**  
These prices, except on fresh produce, are effective through Saturday, Sept. 30.

## Make your War Bond home modern... and practical, too—with Gas



**PLAN** to make your War Bond home modern by all means...but practical, too...The low cost of keeping house with Natural Gas...that's practical. The tiny blue flame you can see and regulate just as you want...that's practical. The instant speed...the comfort of having constant, dependable heat...these are practical things. And so is experience, for here in Southern California, 95 out of every 100 women use gas. Their verdict speaks for itself: "Gas is practical!"

SOUTHERN CALIFORNIA GAS COMPANY

# GAS

THE MAGIC FLAME THAT WILL BRIGHTEN YOUR FUTURE