

**A HOME SAVING PLAN**

**American Savings & Loan Assn.**  
210 South Pacific Avenue  
Phone Redondo 3351  
Redondo Beach California



**When Calling War-busy Centers**

Sometimes you may hear the LONG DISTANCE operator say—"Please limit your call to five minutes." That's to let you know the lines are crowded and to help more calls get through quicker.

**SOUTHERN CALIFORNIA TELEPHONE COMPANY**  
1266 Sartori Ave. Telephone Torrance 4600

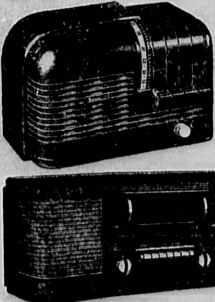


**2 DAY SERVICE**

7 REPAIRMEN TO SERVE YOU  
LARGEST RADIO REPAIR SHOP IN SO. CALIFORNIA

**RADIOS**

Made To Work Like New . . .



**GUARANTEED RADIO SERVICE**

Expertly Trained Service Men  
18 Years' Experience

**FREE TUBE TESTING**

**FREE ESTIMATES**

6 Months Guarantee on All Overhaul Work

**PLATT RADIO**

8451 So. Vermont

TW-5258 TH-3194

**RECOVERING . . . C. G. Whittington, Ph.M. 2/c, U.S.N., of Torrance, is recovering from a miraculous operation on his brain at the Naval hospital at Shoemaker, Calif. Wounded on Jan. 7 in the action at Cape Gloucester, New Britain, Whittington has had four operations, three in the islands and the one Aug. 22 at the Shoemaker hospital. A piece of shrapnel one-half inch long was removed from his brain in this operation and medical authorities said that he is on the road to full recovery, with no permanent effects from the wound. The shrapnel entered his temple, his mouth and part of it came out back of his ear.**

Major Boyle is rounding out his second year in the Army, having entered the transportation service of the Army Sept. 20, 1942, as a First Lieutenant.

He was with the invasion forces at Casablanca, Sicily, Italy and France, and has seen action in most of the North African and Italian campaigns. His last letter home was written recently from France, and he has sent home many fine souvenirs of art work, lace and other items, from Italy.

He is a past commander of the Torrance American Legion post and one of the two men in the U. S. Navy in World War I to win the Croix de Guerre. Prior to entering the service, he was with the Banning Company, Wilmington.

**W. E. Buckley's Injuries Worse Than Reported**  
William E. Buckley, SK 2/c, of Torrance, was injured more seriously than at first believed when an airplane crashed on a tent in which he was lying on a South Pacific island in July, according to word received by Mrs. Buckley.

A letter dated Aug. 29 W. E. Buckley states that in addition to the fractured pelvis he suffered in the freak accident, he has a fractured collar bone, broken ankle and cracked ribs.

He has been moved south to a cooler climate and is in a base hospital, Mrs. Buckley said, the location of which was not revealed for security reasons.

His new address is NLFED Navy 105, care of Fleet Postoffice, San Francisco, Calif.

**JOHN DELANO**, a private, 1-c, is being treated at Birmingham General Hospital for injuries suffered a year ago when he was wounded in the Italian campaign. He has been awarded the Order of the Purple Heart. His parents are Mr. and Mrs. E. W. Delano of 2567 Sonoma ave.

**HARVEL (BUDDY) GUTTENFELDER**, stationed at Santa Ana Air Base, spent the weekend with his parents here.

**WILLIAM MARTIN . . . a chief warrant officer, recently returned from duty in the South Pacific, with Mrs. Martin and their daughter, Barbara Lee, were guests last week at the home of Mr. and Mrs. William Diesel of Post ave. The Martins, former Torrance residents, were en route to his base in Philadelphia.**

**FRANK PERKIN**, serving in photo intelligence, has been transferred from De Ritter Field, La., to Tampa, Fla.

**GARDEN SUPPLIES**

- Fertilizers
- Insecticides
- Peat Moss
- Basket Moss
- Seeds
- Trees
- Garden Hose
- Bedding Plants
- Vines - Shrubs
- Ferns
- Mouse Plants

**Lawn Rollers Rented**

**NURSERY CLOSED EVERY TUESDAY**  
HOURS 9 A.M. to 6 P.M.

**MERRICK'S ABC NURSERY**  
1400 REDONDO BEACH BLVD. TORRANCE 4-1079

**Protect roofs now**  
Standard's tough asphaltic coatings seal against weather damage, stop leaks, resist cracking and checking. Use Standard Asbestos Roof Coating, for top quality, Standard Roof Paint, for economy. For best results, prime with Standard Utility Coating or Standard Priming Solution. Renew shingle roofs with Standard Shingle Stain or Oil.

**C. B. MITCHELL**  
Cabrillo at Carson - Phone 765

**Your local representative for STANDARD OF CALIFORNIA**

**AT SAN FERNANDO**  
Mr. and Mrs. W. A. Beecher were Sunday guests at the home of Mrs. Myrtle Owens of San Fernando.

**CHARLES WILLIAMS**, a company sergeant at Fort Ord, where he is serving in the ordnance department, was joined recently by his wife, the former Helen Floyd, who will remain there indefinitely.

**Points Each Rationed Foods Price Value**

- |                     |   |            |     |
|---------------------|---|------------|-----|
| (0) Beans           | Large or small Dry White Beans                | 1-lb. bag  | 10¢ |
| (20) Figs           | Sundown Brand Kodak variety                   | 1-lb. box  | 13¢ |
| (2) Rolls           | Vegetable Juice Cakes                         | 12-oz. can | 14¢ |
| (3) Soup            | Lyndon Brand Chicken-Noodle                   | 10-oz. can | 10¢ |
| (3) Soup            | Hung Brand Tomato                             | 11-oz. can | 11¢ |
| (6) Tomato Juice    | Sunny Down 46-oz. can, 21¢ plus 12 points     | 11-oz. can | 9¢  |
| (15) Pork and Beans | Pearhouse Brand—with tomato sauce             | 16-oz. can | 13¢ |
| (5) Corn            | Country Home Cream style, Fancy, white        | 20-oz. can | 14¢ |
| (8) Plums           | Del Monte Brand California Style — Red String | 17-oz. can | 13¢ |
| (2) Sunnybank       | Vegetable Margarine                           | lb.        | 18¢ |
| (2) Dalewood        | Vegetable Margarine                           | lb.        | 18¢ |
| (1) Kraft Dinner    |   | pkg.       | 10¢ |

**Every Crisp Salad Vegetable Loves Nu Made MAYONNAISE**



**PINT 29¢**  
**JAR 1/2 Pint 16¢**

**TYPICAL SAFEWAY VALUES**  
Ritz Crackers N.B.C. Brand 1-lb. pkg. 21¢  
Tea Timers Crackers with "Party Flavor" 1-lb. pkg. 20¢  
Brown Sugar In sanitary cartons 1-lb. 20¢  
Sleepy Hollow Table 14-oz. bottle 20¢  
Molasses Grandma's Old Fashioned 16-oz. bottle 21¢  
Wesson Oil Pint 27¢  
Mayonnaise Best Flavor 1/2 pint, 19¢  
A-1 Sauce The DASH that makes the Dish Superior Brand 16-oz. bottle 17¢  
Raviolis Chicken Raviolis 16-oz. jar 13¢  
Stripes Raviolis 16-oz. jar 13¢  
Chicken & Noodles Lyndon Brand. Just heat and serve. 16-oz. jar 27¢

**FLOUR PRICES**

Kitchen Craft Flour 10-lb. bag 51¢  
Enriched home-type blend, 5-lb. bag, 27¢  
Drifted Snow Flour 10-lb. bag 55¢  
Sperry's enriched flour, 5-lb. bag, 20¢  
Buckwheat Flour, Aunt Emma pkg. 17¢  
For perfect hot cakes 40-oz. package, 22¢

**CEREALS**

Morning Glory Oats 20-oz. 12¢  
Choice of quick cooking or regular style.  
Quaker Oats Quick or regular 20-oz. 13¢  
Carnation Wheat Quick 16-oz. 11¢  
Nabisco 100% Bran 8-oz. 8¢  
Corn Flakes Kellogg's 11-oz., 8¢ 12¢

**HOUSEHOLD ITEMS**

Ivory Soap Large size bars 3 for 29¢  
Old English Scratch-removing Polish 6-oz. bottle 23¢

**LINCOLN SAVINGS & LOAN ASSOCIATION**  
Phone Michigan 4335  
615 S. Spring St. Los Angeles, Calif.

**FARM FRESH! Produce at Safeway is attractive, fine to eat, and full of vitamins—naturally!**

The beauty of Safeway fruits and vegetables is more than "skin deep." It's natural beauty; a radiation of freshness. Because Safeway produce is rushed from farm to store, it is sold at its peak of goodness—crisp, tender, full of vitamins. Satisfaction is guaranteed—always.

- |                             |   |     |     |
|-----------------------------|---|-----|-----|
| <b>UTAH TYPE CELERY</b>     | Crisp, green, succulent. Use in summer salads.          | lb. | 10¢ |
| <b>TENDER YOUNG CARROTS</b> | Just pulled. Sold by the pound. Tops are off.           | lb. | 5¢  |
| <b>FRESH GREEN BEANS</b>    | Crisp, tender Kentucky Wonder variety. Cook with bacon. | lb. | 15¢ |
| <b>FANCY BARTLETT PEARS</b> | Ripe, sweet, juicy. For fruit bowl or lunch.            | lb. | 11¢ |
| <b>BLACK RIBIER GRAPES</b>  | Also Red or White Malagas. Fancy table grapes.          | lb. | 11¢ |
| <b>STANDARD PRUNES</b>      | Firm, sweet, purple prune-plums. Delicious.             | lb. | 12¢ |
| <b>CASABA MELONS</b>        | Thick-meat, nice flavored. Sold by the pound.           | lb. | 5¢  |

**COFFEE AND TEA CHECK THESE VALUES!**

- |                 |                            |            |     |
|-----------------|----------------------------|------------|-----|
| Airway Coffee   | Flavor choice of thousands | 1-lb.      | 20¢ |
| Nob Hill Coffee | Enjoy it land              | 1-lb.      | 23¢ |
| Edwards Coffee  | Drip or regular            | 1-lb. jar  | 27¢ |
| Iris Coffee     | Drip or regular            | 1-lb. jar  | 33¢ |
| MJB Tea         | India Ceylon               | 4-oz. pkg. | 25¢ |
- 
- |                         |                            |             |     |
|-------------------------|----------------------------|-------------|-----|
| <b>SOFTASILK</b>        | Fluffy Cracker Cake Flour. | 44-oz. PKG. | 24¢ |
| <b>APPLESAUCE</b>       | 25 Blue points. Borden's.  | 20-oz. CAN  | 13¢ |
| <b>KC BAKING POWDER</b> | Two 5-oz. jars, 15¢.       | 25-oz. JAR  | 19¢ |
| <b>OXYDOL SOAP</b>      | For laundry use or dishes. | 24-oz. PKG. | 22¢ |
| <b>SUPER SUDS</b>       | Granulated soap. Blue box. | 24-oz. PKG. | 22¢ |

**Steak Sale**

For tender, fine-flavored steak—buy at your Safeway. Select a T-bone, Club, Porterhouse or Sirloin steak to broil; or a Round steak to swiss. All are guaranteed to please—or money back! Note the special prices.

- |                         |                   |     |             |     |             |     |
|-------------------------|-------------------|-----|-------------|-----|-------------|-----|
| <b>(13) SIRLOIN</b>     | Grade AA or A lb. | 39¢ | Grade B lb. | 33¢ | Grade C lb. | 29¢ |
| <b>(14) T-BONE</b>      | Grade AA or A lb. | 47¢ | Grade B lb. | 41¢ | Grade C lb. | 36¢ |
| <b>(15) ROUND</b>       | Grade AA or A lb. | 38¢ | Grade B lb. | 33¢ | Grade C lb. | 30¢ |
| <b>(10) ROAST PRIME</b> | Grade AA or A lb. | 30¢ | Grade B lb. | 29¢ | Grade C lb. | 26¢ |

**FANCY WIENERS** Special Low Price This Week At Your Safeway!

Plan a wiener roast for this week-end. These are excellent quality, delicately seasoned. lb. 29¢

- |                      |                             |     |     |
|----------------------|-----------------------------|-----|-----|
| <b>DRY SALT PORK</b> | Use for seasoning beans.    | lb. | 15¢ |
| <b>PURE LARD</b>     | In one pound size packages. | lb. | 18¢ |
| <b>GROUND BEEF</b>   | State inspected. In Viking. | lb. | 29¢ |
| <b>PORK LIVER</b>    | Sliced. Fry with bacon.     | lb. | 24¢ |

NOTE: Figures in parentheses above indicate red points per pound. Some Safeways do not carry all grades listed.

**SAFEWAY**

1301 SARTORI AVENUE, TORRANCE 2171 PACIFIC COAST HIGHWAY, LOMITA