

### Big Warehouses Ready for LAPE

Almost 14 acres of warehouse buildings have just been completed and now are in use by the Los Angeles Port of Embarkation.

The three 200 by 1,000-foot buildings which cover an area of 600,000 square feet are known as Manuel Warehouses. They are located on the east bank of the Gardena Valley drainage channel on U. S. Highway 101 near the Long Beach city line.

#### CONGRATULATED

R. E. Moffitt of 2273 250th st., who divides his time between his Torrance Fire department job, that with the Starr Petroleum Co., and as Lomita Scoutmaster, last week was sharing with Mrs. Moffitt the congratulations of the community on the birth of their second child, born Aug. 16 at Torrance Memorial hospital. The boy is their second child, the other being John, age 15.

### Students See T. B. Pictures in The Schools

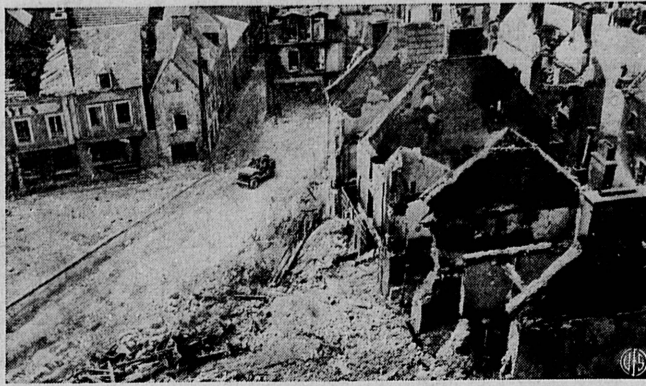
Approximately 114,800 students and teachers in Los Angeles city schools have seen one or more of five motion pictures on the cause and cure of tuberculosis during the past year, Vierling Kersey, superintendent of schools, revealed yesterday.

A total of 1,237 showings have been made under the supervision of the visual education section of the Los Angeles city schools system.

The films were supplied to the schools by the Los Angeles County Tuberculosis and Health Association, which furnishes films on tuberculosis and other health subjects for showings to interested groups.

Memorial hospital. The boy is their second child, the other being John, age 15.

### A Reconstruction Job Ahead for Yanks



War-battered Marigny, France, shows terrible destruction wrought by American artillery barrage before Nazi forces were driven from area. Piles of rubble fill streets; broken equipment is strewn about; blocks of houses are gutted with but single walls left standing.

### COUNTY WILL KEEP ITS BIG POPULATION

The odds are in favor of Los Angeles county retaining most of its wartime population increase and expanding still further, but this hinges on post-war economic readjustments. The State Reconstruction and Re-employment Commission reaches this conclusion in analyzing its recent population studies.

The commission's population report takes into consideration the fact that Los Angeles county has a history of rapid and continuous growth since 1900, reaching 2,786,000 in April, 1940, and advancing to 3,371,000 in January, 1944. The numerical gain of 585,000 people was greater than that of any county in the nation and greater than that of any of the six other areas into which the state was divided for purposes of the studies.

**AUTO THEFT**  
During the month of June, 1944, automobiles reported stolen to the state's bureau of auto theft totaled 1,233. Vehicles reported recovered during the same month number 1,129.

**SOIL DUSTING**  
**SULPHURS**  
United Sulphur Co.  
Torrance, Calif.

**SMASHING CLEARANCE SALE AT Firestone**

**SENSATIONAL PRICE REDUCTIONS**

**LAST 4 DAYS**

**REDUCED FOR QUICK CLEARANCE CHECK EVERY ONE! SAVE SAVE SAVE**

	WERE	NOW
TRAVEL KITS . . . . .	3.95	2.95
BIKE SADDLE BAGS . . . . .	65c	39c
CHILDREN'S SCOOTERS . . . . .	4.95	3.89
WOOD WAGONS . . . . .	5.95	3.89
HOSE REELS . . . . .	1.98	1.37
GARDEN CARTS . . . . .	4.95	2.95
KITCHEN UTILITY SETS (Kitchen Knives, Shredder, Juicer) . . . . .	89c	49c
FIRE KING LUNCHEON SETS . . . . .	3.79	2.99
25' SYNTHETIC GARDEN HOSE . . . . .	2.95	2.65
HIGH CHAIRS . . . . .	9.95	8.95
CALIFORNIA POTTERY (Service for 4) . . . . .	3.95	3.45
PLANE MODELS . . . . .	2.19	1.39
LAUNDRY KARS . . . . .	1.98	1.33

**HISTORY REVEALS**

years of careful cultivation, without which the beauty of this orchid would still be unknown. Likewise, many years of research and professional skill form the background of this institution.

**STONE & MYERS**  
FUNERAL DIRECTORS  
Ambulance Service—Phone Torrance 195  
BESSIE V. MYERS and J. HUGH SHERREY, JR., Owners  
Cremators of Engracia - Torrance

### Alta Collins Confirmation Before Senate

Confirmation of the nomination of Alta Collins, acting postmaster of Harbor City, as permanent postmaster, has been sent to the Senate by President Roosevelt.

Succeeding Thomas F. Gladwill, who resigned the post in June, 1942, Mrs. Collins, through her competence, fine personality and friendliness, has succeeded in placing the postoffice in second class, which took place in July, 1944.

Mrs. Collins has been a resident of Harbor City for the past 17 years, is a past president of the American Legion Auxiliary, and has a host of friends in the community.

### SERVICE FAMILIES ASKED NOT TO REVEAL INFORMATION OF BOYS ON MILITARY FRONTS

"Stop revealing military secrets" is the theme of literature which air raid wardens and civilian service corps here are delivering this week to homes which have blue stars in their windows.

The distribution is sponsored by the security of war information committee which has the self-imposed task of educating the service families in Los Angeles county that "careless talk may cost the lives of sailors and soldiers, sink ships, promote sabotage, turn blue stars into gold."

Special stress is laid on warning wives and mothers and sweethearts of men in service not to reveal information which may be included in coded letters received from overseas. Nothing should be discussed, says the committee, unless it has been published or broadcast.

With the rapid intensification of the war in the Far East, this area will be the No. 1 "hot spot" for the distribution of

### Black Widow Spider Facts Are Presented

At this time of the year the black widow spider is a menace that should not be ignored, warned Dr. Roy O. Gilbert, assistant county health officer.

The recent flood of telephone requests received by the health department for information on this subject is perhaps evidence that garage and basement cleaning is bringing the spider into the open, Dr. Gilbert observed.

The black widow spider lives and breeds in dark places and attacks only when cornered or unexpectedly disturbed, hence bites are most frequently received on the hand or arm in exploring dark corners or recesses.

Although death from the bite is relatively rare, severe symptoms and the need for medical attention are characteristic of most cases. Pain spreads up the arm to all parts of the body usually causing shock and prostration.

A red hour-glass marking on the abdomen of a glossy black spider serves as a ready means of identification. The three dimensional web is easily recognized because of its toughness and lack of any design or order. The young are being hatched at this season of the year and the egg sacs can be seen in the web.

Several effective sprays for eradication are on the market. Leather gloves afford some protection while working in garden, basement or garage.

**YOU NEED HIM! HE NEEDS YOU! BUY WAR BONDS**

## What makes a train run?

When a train such as the *Cascade, Overland Limited, Golden State Limited* or *Sunset Limited* thunders by, all you're conscious of is the thrill of a thousand tons of steel going places. You may catch a brief, friendly wave from the engineer, but he's about the only man you see.

The purpose of this advertisement is to take you behind the scenes and show you how many men and women are necessary to make a train run. The locomotives, cars and tracks are only the tools with which these people work.



**1** Besides the Engineer and Fireman, a long distance train usually carries Railroad and Pullman Conductors, Brakemen, Porters, Steward, Cooks, Waiters, Baggage men, Mail Clerk, Express Messenger. For example, our streamlined *Daylight* (San Francisco-Los Angeles), requires 62 people.



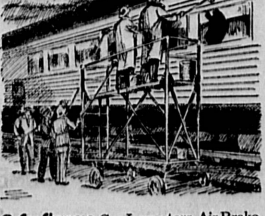
**3** Signalmen, Electricians and Linemen regularly inspect and repair the thousands of miles of wire, and all the signals, motors and apparatus it takes to run trains safely and on time.



**2** Track Workers "manicure" every foot of Southern Pacific's 15,000 miles of line. Carpenters and Bridge and Building Men maintain the countless bridges, tunnels and trestles.



**4** Dispatchers control the movements of trains, sometimes automatically by "Centralized Traffic Control" (see above). Telegraphers receive train orders and report train movements.



**5** Lubricators, Greasemen, Boiler Inspectors and their helpers give locomotives a thorough going over at the end of every run, put them in tip-top shape.



**6** Machinists, Blacksmiths, Boiler makers, Carmen, Sheet Metal Workers and other craftsmen repair war-worn equipment for the busy Main Line.



**7** Commissary Workers make sure that only the finest food is prepared in S.P. diners. Last year Southern Pacific served more military meals than any other two railroads combined!



**8** Car Cleaners, Car Inspectors, Air Brake Inspectors and Electrical Inspectors are among the thousands of workers who help to make the railroad run.

**9** Last but not least, the Call Boy—smallest cog in the railroad machine. He wakes up the train crew and makes sure they report for duty on time.

**S.P.**  
The friendly Southern Pacific

### Report Signs of Sleeping Sickness Among Horses

Dr. R. R. Smith, veterinarian, at 1915 Carson st., is urging local horse owners to report at once to the county livestock inspector any sign of sleeping sickness among horses. One case has been reported by R. T. Russell, 1735 Date st., and horses can be vaccinated against the disease.

It is slightly contagious to humans, it is said.

### OBITUARY

**ELIZABETH M. BEACH**  
Elizabeth Miriam Beach, 69, of 1213 Cota st., died on Aug. 22. She was born in Colorado. Surviving are Abel J. Beach, the widow; Henry W. Beach, son, of Long Beach; Mrs. Margaret Foster and Marybeth Beach, granddaughters, both of Long Beach; Robert James Foster, great-grandson, Long Beach. Services will be conducted by Rev. Paul M. Wheeler Saturday at 10 a.m. in Stone & Myers chapel, with interment in Rose Hills cemetery.

**Attention**

**GAS FURNACE AND FLOOR FURNACE USERS**

Immediate repair and maintenance service for gas spaceheating appliances is not always available because of today's manpower shortage.

You may have overlooked the above notice when it appeared in this paper last April.

Conditions have not improved. Replacement parts and service remain critical.

If YOUR heating equipment needs inspection or repair ACT NOW — DON'T DELAY ANY LONGER

This Notice Published by  
**INSTITUTE OF GAS HEATING INDUSTRIES**

In order that the public may be advised of the manpower and material shortage in the heating equipment service industry.

**SPECIAL!**

**SCREEN PATCHES**

Pkg. of 4 **7c**

Repairs small holes in screens quickly and easily.

**FINE VALUE!**

**BICYCLE HEADLIGHT**

Reg. 89c **59c**

White enameled finish. Fits all bikes.

**PRICE CUT IN HALF!**

**LUNCH KITS**

For School or Work

Folds neatly when not in use. 8 1/2-inch.

Were 49c

**PRICED TO CLEAR**

GARDEN TOOL HOLDERS . . . . . 39c  
DRIP COFFEE MAKERS 59c  
MIXER COVERS . . . . . 29c  
PHONO. NEEDLES . . . . . 25c  
VENETIAN BLIND BRUSH . . . . . 29c  
PLANE MODELS . . . . . 29c

**SALE!**

Reg. 49c  
**Clothes or Furniture BRUSH 29c**

Stiff bristle brush of fine, long-wearing quality.

**NO RATION CERTIFICATE REQUIRED**

**Now! Grade A Camelback!**

**Firestone**  
Factory-Controlled RECAPPING  
With Grade A Camelback!

6.00-16 **7.00**

Only the finest materials and the best workmanship go into Firestone recaps.

**WERE 1.29**

**Place Mat Set 69c**

4-Piece  
Gay and colorful! Coated fabric resists grease and liquids.

**Firestone STORES**

Marcelina at Cravens, Torrance. Phone 476  
Listen to the Voice of Firestone every Monday evening over N.B.C.