



### Don't Go to Church

IF you would like a selfish, self-centered life, satisfied with your own sufficiency, and subject to no power greater than your own—then, DON'T GO TO CHURCH.

IF you would accept all the blessings that God has granted to life on this earth—sun, rain, flowers, the mountains and the seas—without once gathering with others to lift your heart in gratitude and praise—then, DON'T GO TO CHURCH.

IF you can benefit by such contributions of social welfare and reform as hospitals, schools, the Red Cross and others without giving a passing thought to the MOTHER of them all—then, DON'T GO TO CHURCH.

IF you are opposed to war, crime, poverty and all that cheapens and destroys life, and yet want to escape doing anything about it yourself—then, DON'T GO TO CHURCH.

IF you are indifferent to the moral welfare of your own children and indifferent to the wave of delinquency and crime throughout the land—then, DON'T GO TO CHURCH.

IF you seek no word of encouragement or hope in your hours of distress, if you have no need for that comfort and strength that comes "from above" and no concern for your boys on the far-flung battlefield—then, DON'T GO TO CHURCH.

—Adapted

BUT FOR THOSE WHO CARE AND WILL SHARE

ATTEND THE CHURCH OF YOUR CHOICE

Sponsored by the Torrance Kiwanis Club—Committee, Support of Churches in Their Spiritual Aims

## PACIFIC COAST BORAX

—NEEDS—

### UNSKILLED WORKMEN NOW

TO WORK IN THE REFINERY THAT PAYS

### GOOD WAGES

And Offers Excellent Opportunities

ORGANIZED TRANSPORTATION  
GOOD WORKING CONDITIONS

In An 100% Essential Plant

Apply

### MORMON ISLAND REFINERY

FOOT OF FRIES AVENUE  
WILMINGTON, CALIFORNIA

Availability Certificate Required

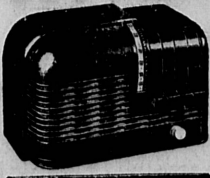
### 2 DAY SERVICE

7 REPAIRMEN TO SERVE YOU

LARGEST RADIO REPAIR  
SHOP IN SO. CALIFORNIA

## RADIOS

Made To Work  
Like New . . .



### GUARANTEED RADIO SERVICE

Expertly Trained  
Service Men  
16 Years' Experience

FREE  
TUNE TESTING

FREE  
ESTIMATES

6 Months Guarantee on All Overhaul Work

## PLATT RADIO

8451 So. Vermont

TW-9988  
TH-3166

CALL TORRANCE 444 FOR WANT AD SERVICE

### "Public Notices"

**NOTICE INVITING BIDS**  
(85086)  
Notice is hereby given that sealed bids will be received by the Board of Supervisors of the County of Los Angeles, in the office of said Board in the Hall of Records, Los Angeles, California, until 10:00 o'clock A.M. on September 5, 1944, for the construction of A STORM DRAIN IN THE ALLEY NORTH OF EAST ROAD east of Torrance, from Normandie Avenue easterly to North Florence Drive and thence southerly to East Road, a distance of approximately 700 lineal feet, in accordance with the provisions of the plans and specifications therefor which are on file in the aforementioned office of said Board.

Proposals must be submitted on the blank forms prepared and furnished for the purpose which may be obtained at the office of the Road Department in the aforesaid Hall of Records; at which office bidders may examine the copies of the plans and specifications for the contemplated work upon payment of \$5.00 per set. Such payment, however, will not be required, if the bidder, if his proposal is accepted, will enter into and execute the awarded contract, and furnish the required bonds in connection therewith, in accordance with the terms of the aforementioned specifications.

The Board of Supervisors reserves the right to reject any or all bids, and to waive technical errors and discrepancies, if it so seems to best serve the interests of the County.

Pursuant to the provisions of Sections 1779 to 1777, inclusive, of the Labor Code, the Board of Supervisors has ascertained the general prevailing rate of per diem wages for each craft or type of workman needed to execute the proposed contract, and it will be required that not less than said rates be paid to all such workmen employed or engaged on the work. The rates so ascertained, reduced to an hourly basis, are as follows:

Trade or Occupation	Rate
Air Compressor Operator	\$1.25
Apprentice Engineer (including Fireman, Oiler and Greaser)	1.12 1/2
Blacksmith	1.37 1/2
Blacksmith Helper	1.00
Boxman or Mixer Box Operator (Asphalt or Concrete Plant)	1.25
Carpenter—General (except as otherwise separately classified)	1.35
Cement Finisher	1.35
Clamshell or Crane Operator (capacity less than one yard) including truck crane	1.62 1/2
Clamshell or Crane Operator (capacity one yard or more) including truck crane	1.75
Concrete Curer (impervious membrane)	1.12 1/2
Concrete Mixer Operator (Paving type)	1.62 1/2
Concrete Mixer Operator (Skip type)	1.37 1/2
Concrete Mixer Operator (Mobile mixer)	1.50
Cribber, Shorer or Timberman	1.22 1/2
Electric Tool Operator or Tender (except as otherwise separately classified)	1.12 1/2
Flagman	0.62 1/2
Grader Operator (skid steer, or any type of power blade)	1.62 1/2
Grader Operator (tow blade or grader)	1.87 1/2
Guard	0.75
Iron Worker—Reinforcing	1.50
Laborer (General or construction—except as otherwise separately classified)	0.87 1/2
Mechanical Tool Operator or Tender (except as otherwise separately classified)	1.12 1/2
Mixer Box Operator or Boxman (Asphalt or Concrete Plant)	1.25
Mortarmen	1.00
Pipe Caulker—Sewer Pipe (cement joints)	1.00
Pipe Layer—Sewer Pipe (excluding Caulker)	1.25
Pneumatic Tool Operator or Tender (except as otherwise separately classified)	1.12 1/2
Power Machine Operator (except as otherwise separately classified)	1.25
Power Tool Operator or Tender (except as otherwise separately classified)	1.12 1/2
Repairman (heavy duty)	1.50
Repairman's Helper (heavy duty)	1.12 1/2
Shovel Operator (including Tractor Hi-lift capacity less than one yard)	1.62 1/2

### 8-Team Elimination Set for Girls

An eight-team, double elimination girls' softball tournament, featuring eight of the outstanding feminine clubs of Southern California, will be held at the Torrance City Park, beginning August 25, it was revealed by H. B. Dunn, tournament sponsor, and Dale Riley, city recreation director.

Trophies for the winner and runner-up will be offered in the tournament, with teams from Pasadena, Baldwin Park, Buena Park, Todd Shipyard, Universal Microphone, Torrance, and perhaps El Toro Marines and Northrop Aircraft. Six of the clubs already are signed for the event, Dunn and Riley said, with word due today from the others.

This aggregation of girl players included some of the outstanding talent of the country.

### "Public Notices"

Shovel Operator (including Tractor Hi-lift—capacity one yard or more)	1.75
Shorer, Cribber or Timberman	1.22 1/2
Skip Loader Operator (Wheel type)	1.37 1/2
Timberman, Cribber or Shorer	0.92 1/2
Timekeeper	1.00
Tractor Operator (Bulldozer, Tamper, Scraper, Drag Type Shovel, or Boom Attachment)	1.50
Trenching Machine Operator (except as otherwise separately classified)	1.50
Trenching Machine Operator (No. 24 Buckeye or larger)	1.62 1/2
Truck Driver (carrying capacity less than 6 tons)	0.95
Truck Driver (carrying capacity 6 to 15 tons, inc.)	1.00
Truck Driver (carrying capacity over 15 but less than 20 tons)	1.17 1/2
Truck Driver (carrying capacity 20 tons or more)	1.37 1/2
Truck Driver (Transit-mix trucks—capacity less than 3 yards)	1.25
Truck Driver (Transit-mix trucks—capacity 3 yards or more)	1.37 1/2
Truck Greaser and Tireman	1.02 1/2
Vibrating Machine Operator or Tender	1.12 1/2
Warehouseman—Clerk	1.09
Warehouseman—other	1.00

The above listed rates shall be applicable to eight (8) hours or less of employment in any one day except Saturdays, Sundays and the following named seven (7) legal holidays: New Year's Day, Memorial Day, Fourth of July, Labor Day, Armistice Day, Thanksgiving Day and Christmas Day. For any working time in excess of eight (8) hours in any one calendar day, and for time worked on any of the aforementioned holidays, not less than one and one-half (1 1/2) times the specified rates shall be paid; provided, however, that notwithstanding the general provisions hereinabove set forth, the straight rate of pay shall be applicable to guards and watchmen shall be applicable to eight (8) hours or less of employment per calendar day, including Saturdays, Sundays and Holidays, for a total of not more than forty (40) hours per week, and that not less than one and one-half (1 1/2) times such specified rates shall be paid said flagmen, guards and watchmen for any time worked in excess of eight (8) hours per day or forty (40) hours per week.

The rate of compensation for any classification not listed in the schedule, but which may be required to execute the proposed contract, shall be commensurate and in accord with the rates specified for similar or comparable duties. Wages to be paid apprentices employed or engaged on the work shall be determined in the manner provided by Section 1777.5 of the Labor Code.

By order of the Board of Supervisors of the County of Los Angeles, State of California,  
J. F. MORONEY  
County Clerk and Ex-officio Clerk of the Board of Supervisors  
By INEZ ROBINSON, Deputy  
Date of first publication August 17, 1944  
Aug. 17-24

### E. L. Davis Local PAW District Director

E. L. Davis of Long Beach has been appointed director of the production division in district 5 (Pacific Coast) of the Petroleum Administration for War. He was promoted from within PAW and succeeds Lawrence Vander Leek.

Mr. Davis joined the district 5 office of PAW in December, 1941, as chief of the petroleum production section.

A native of California and a graduate of the Stanford University with a degree in geology, Mr. Davis entered the oil business in 1923.

For three years following his graduation he served in petroleum engineering capacities, first with the Chanslor-Canfield Midway Oil Company and later with the Miley Oil Company.

PAW's district 5 comprises the Pacific states of Washington, Oregon, California, Nevada, Arizona and the Territories of Hawaii and Alaska. Headquarters are at 417 S. Hill st., Los Angeles, Calif.

### SISTER VISITS

Mr. and Mrs. O. W. Hakanson of 800 Portola ave. are entertaining at their houseguest her sister, Miss Frances Hills, who arrived Sunday from Hammer Field, Army Air Base, Fresno.

### SISTER VISITS

Mr. and Mrs. Fred Fischer have been entertaining as their house guest for the past two weeks her sister, Mrs. J. H. McNichols of Salt Lake City.

AT CRESTLINE Mrs. L. G. Barkdull returned this weekend from a two weeks' vacation at Crestline, where she was a guest of Mrs. Bessie Myers.

### SERVICE FACILITIES

Remember that in every community you should find a member of National Selected Morticians. Because of our membership in NSM, we are able to serve you anywhere.



### STONE & MYERS

FUNERAL DIRECTORS  
Ambulance Service—Phone Tor. 195  
BESSIE V. MYERS and J. HUGH SHERFEY, JR., Owners  
Covens at Engracia - Torrance

You Save at the Carsonmart You Save at the Carsonmart You Save at the Carsonmart

## Carsonmart FOR Quality

LOW PRICES AND

Look for quality here . . . and find it! The many housewives who regularly shop at our store do so because they have found out that the brands we feature are noted for their quality—and are second to none. Come in—see for yourself.

STAR KIST TUNA Solid Pack . . . 32c Grated . . . . . 27c 3 Points	Pt. 29c Qt. 55c
WHILE THEY LAST CLOTHES PINS 2 DOZ. 25c	
M-J-B COFFEE 33 <sup>1/2</sup> ¢ lb	
Ukulele Sliced 43 pts. Pineapple 2 1/2 can 23c	
Gerber's Baby Food 3 for 20c	
Imported Port Wines 5ths \$1.49	
Picstweet No. 2 can 15c	
Peas Large, 5 pts.	
Heart's Delight Apricot Nectar 10c 12-oz.—No points	
S & W Asparagus Spears 10 pts. 39c	
Drifted Snow Flour 10 lbs. 57c	
Breakfast of Champions Wheaties 2 pkgs. 21c	
For Better Cakes Softasilk 1 lb. pkg. 26c	
Oil of Character MAZOLA 1-lb. jar 29c Skippy 1-lb. jar 31c	
Brer Rabbit—Green Label MOLASSES 16-oz. jar 20c	
Year-Round Cereal MALT-O-MEAL 1 lb. pkg. 22c	
For Growing Children COCOALAT 1-lb. size 39c	
Doyle's Supreme DOG FOOD 8-oz. 7c	
Woodbury FACIAL SOAP cake 8c	
Large Package SUPER SUDS 23c	
SPECIAL! 3 CAKES PALMOLIVE SOAP 20c	

EXTRA FANCY WATERMELONS lb. 5c	
SWEET SPANISH ONIONS 3 lbs. for 9c	
LARGE FREESTONE PEACHES lb. 8c	
EXTRA FINE CARROTS bunch 5c	
GARDEN FRESH PEAS 2 lbs. for 23c	
No. 1 WHITE ROSE POTATOES 10 lbs. for 33c	
LARGE, GREEN GAGE PLUMS LUG BOX \$1.35	
—BEST FOR CANNING	
—and Other Late Arrivals Friday and Saturday Morning to Give You the Best for Less!	

SPECIAL BUY! POT ROAST 23 <sup>1/2</sup> ¢ lb	
MORRELL'S PRIDE SLICED BACON 42 <sup>1/2</sup> ¢ lb	
FRESH GROUND, MEATY HAMBURGER 29 <sup>1/2</sup> ¢ lb	
PORK SHOULDER ROAST 29 <sup>1/2</sup> ¢ lb	
MEATY NECK BONES 3 LBS. 25c	
LEGS OF LAMB 37 <sup>1/2</sup> ¢ lb	

DOLE'S SLICED PINEAPPLE No. 2 Can 23c 35 Points	
MOTHER'S COCOA 1 lbs. 14c	
Libby's FINE FOODS TOMATO JUICE (6 Points) No. 2 can 10c	
DEVILED HAM No. 1/4 can 15c	
PREPARED MUSTARD 9-oz. jar 9c	

## CARSONMART

1929-31 CARSON ST. TORRANCE

You Save at the Carsonmart You Save at the Carsonmart You Save at the Carsonmart

### "Give us the goods, and we'll deliver!"

The men of the American Merchant Marine are living up 100% to that line in their official song. From Murmansk to Milne Bay, from Anzio to Australia . . . through submarine packs and mine-infested seas . . . they're delivering the vital supplies our fighting men need.

ACME the beer with the high I.Q. (It Quenches!)

Brewed in Los Angeles by ACME BREWING CO.

A. P. CORSARO  
1117 1/2 STEINHART LANE—REDONDO BEACH, CALIF.