



AMPHIBIOUS TRAINING . . . Ensign Leroy Earl Stecker, of Torrance, now is in Little Creek, Va., taking a 10-week course in amphibious training, prior to putting a new type of landing ship into commission. It is a long hard course, according to word received here, but he enjoys it and likes the men with whom he is working.



IN SOUTH PACIFIC . . . John R. Rauss, Carpenter's Mate 2/c, U.S. Coast Guard, on the right, whose parents, Mr. and Mrs. S. V. Rauss live at 708 Acacia st., is shown ashore from an assault transport in Pacific waters joyously digging into the tinny rations issued. With him, left above, is Nino Briscuso, of Washington, D. C. Rauss, who is an expert rifleman and radar operator, enlisted in the Coast Guard on Dec. 8, 1941, and took part in the invasion of Italy on the Cutter Campbell which had several scraps with enemy submarines. His wife is living in New York. S. V. Rauss said they received a letter from him a week ago, and that he is in fine health and spirits.



GETS CERTIFICATE . . . Ensign George B. Selkirk of Torrance received his certificate as a primary flight instructor when he graduated from the Naval College for Primary Flight Instructors at New Orleans recently.

The ensign, who was formerly employed in commercial radio work, attended Modesto Junior College for two years. His parents, Mr. and Mrs. P. J. Selkirk, live at 2203 W. Carson, Torrance.

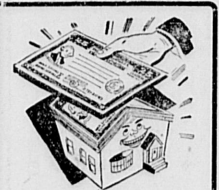
Ensign Selkirk received his Navy wings before reporting to this station and will return to California to instruct primary flight students at the Naval Air Station, Livermore.

CARROLL J. BENDER . . . a captain serving with the Army air forces in England, urges that Americans continue their splendid work in supplying ordnance material and foodstuffs to the fighting forces. He says that while the English girls are beautiful, he still prefers Americans.

ROBERT C. WARDROP . . . seaman 2/c, enjoyed a recent leave from duties in the South Pacific when he visited his parents, Mr. and Mrs. Clifford Wardrop of 2428 Gramercy ave.

EARL D. LOCK . . . is an apprentice seaman stationed at Camp Hill, Farragut, Idaho. He is a son of Mr. and Mrs. Ernest A. Lock of 1323 Portola ave.

GLEN H. ABRAMS . . . a sergeant, recently transferred to a war show unit, is now at Oklahoma City. His wife, the former Jean Hoskins, is making her home with her parents during his absence.



Feather Your Nest With WAR BONDS

War Bonds top all as an investment and a Savings Plan. When the time comes for you to build your new home, the money you have saved by buying Bonds will come in mighty handy. With War Bonds, the FHA Plan, and us, you can't fail on your postwar plans for a better living.

TORRANCE LUMBER CO.
1752 BORDER AVE.
TORRANCE

SERVICE SHORTS

JAMES A. DANIEL . . . a lieutenant in A.A.F., has completed training in an operational training unit at Reno, Nev., and is enjoying a 7-days' leave with his parents, Mr. and Mrs. A. W. Daniel of 1527 W. 218th st., Daniel, who flew in from Reno Tuesday, has been assigned to Air Transport Command.

J. D. (JIGGS) GREATHOUSE . . . in naval aviation service, having served in the Aleutians for eight months and now serving in the South Pacific, has been advanced to radioman, 1/c, Greathouse, in a letter this week to his uncle, C. A. Greathouse and his grandmother, Mrs. Mary Elizabeth Greathouse, both of 2474 W. 254th st., advises that he is getting a good workout as a middleweight fighter, helping to keep up the boys' morale. He was graduated from Torrance High school with the class of W. 41.

TOM G. WILKES . . . a corporal, serving with A.A.F. at Roswell, N. M., and his wife, the former Lorraine Redwood, arrived Sunday for a 15-days' furlough. He is a son of Mr. and Mrs. T. J. Wilkes of 2717 Carson st.

MILES (SHORTY) WATKISS . . . a corporal, formerly stationed here with the 13th Ordnance Co., in a letter this week from his new post in England, wishes to be remembered to all his friends here.

CHARLES WARREN EDWARDS . . . an electrician's mate, 3/c, enjoyed a brief leave when he recently visited his parents, Mr. and Mrs. M. J. Edwards of 2208 Androco ave. He has been on Atlantic sea duty for the past 11 months.

CHARLES H. OLSON, fire control, 3/c, U.S.N., has returned from service in the Aleutians to Treasure Island receiving base. He is enjoying a 30-days' leave to be spent with his parents, Mr. and Mrs. R. E. Olson of 2476 255th st., Lomita, and as a guest of his shipmate on a 35,000 acre ranch near Deming, N. M.

ALFRED J. BYK . . . a chief commissary steward, stationed at Bradford, Va., will be host to his wife, the former Jane Benstead when she joins him there this week. They plan to visit his parents at Manchester, N. H., and later Mrs. Byk will make her home at Kitterly, Maine.

MARSHALL CONDON . . . cook, S/2, stationed at Coronado Hospital, spent the weekend with his parents here.

JOE BANKS . . . a sergeant technician, stationed at Camp Haan, is enjoying a 14-days' furlough with his wife, the former Dorothy Benstead, and their son, Joseph Michael.

ROBERT L. NEWKIRK . . . U.S.N., stationed at San Diego, arrived for a weekend visit with his parents, Mr. and Mrs. J. F. Newkirk of 718 Portola ave.

GUS DODOS . . . a private, stationed at Camp Carson, Colo., sends best wishes to all his friends here.

CLEMETH GILBERT (BERT) BENDER . . . is now an apprentice seaman at San Diego Naval Training Station.

JOE VAN KRALINGEN . . . a seaman, 1/c, U.S.C.G., has arrived in San Francisco en route home for a leave following 20 months' service in the South Pacific. He is a son of Mr. and Mrs. A. Van Kralingen of 2304 Gramercy ave.

IS CONVALESCENT
Rhea Johnson, Jr., of 2304 Gramercy ave., is convalescing from a tonsillectomy which he underwent recently at Torrance Memorial Hospital. Rhea is expecting his daddy home soon for a leave from his duties in the South Pacific.

NOW EMPLOYE
A. Van Kralingen is now employed with Zoss Construction Co., who have a contract for 500 apartments for defense workers in Watts.

Hero's Mother Will Be Guest In Torrance

Torrance will play host to the 83-year-old mother of Sgt. Karl E. Ross, World War I, whose memory is being honored Saturday, May 27, when areas for troops permanently stationed or in training at the Los Angeles Port of Embarkation, Wilmington, will be dedicated and named for him.

Mrs. Carrie Ross, Stockton, daughter of an early California mining engineer, and a granddaughter, will be quartered at the Guest House at the Torrance LAPE hospital, during a two day stay incident to the dedication and official naming of Camp Ross.

Northrop Takes Army Nine In Park Walkaway

The Torrance Army Hospital's "Medical Commandos" played the Northrop Aircraft Company's league-leading softball team last night at the Torrance Municipal Ball Park, and the verdict of everyone present, spectators and soldiers alike, was that the war might be over a lot sooner if the Northrop boys were in the Army.

The score of the seven-inning game was 15 to 2, and in a brief phrase, the whole game was marked by too much Kratofil. This demon Northrop pitcher handled the Army as though it were toy soldiers instead of the real thing. He pitched no-hit, no-run ball for five innings and then, with his team's 15 runs behind him, he relaxed just enough in the sixth inning to allow two hits, which the "Commandos" turned into two runs on Lt. Castle's double.

Kratofil's teammates gave him sturdy support throughout, with Heath, Linstrom, Brewer and Tommy Blair all smacking out lusty home runs. The "Commandos' new pitcher, "Slim" Edwards, didn't allow many hits but those the Northrop men did get were most of the time fairly long and the runs kept piling up. But, as Dale Riley said after it was all over: "At least the Hospital boys won a moral victory. They're the first team in the league that has even scored a run off Kratofil!"

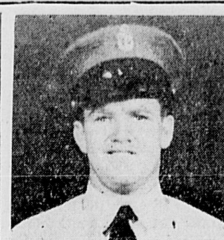
Check Containers Before Opening Canned Foods

A warning against the use of canned foods whose containers are bulged or swelled comes today from the County Health Department. Leaking cans are especially dangerous, officials indicate.

"It is better to lose a few rations points than to endanger your health or even life by eating food from faulty cans," emphasizes Jonathan Kirkpatrick, chief food and drug inspector.

Since rationing causes stocks of canned foods to move more slowly than before, it is now especially necessary to be on the look-out for defective cans, Kirkpatrick states. Spoilage may occur in the case of food which has been properly canned but held in storage for long periods of time.

FORMER RESIDENTS HERE
Mr. and Mrs. J. W. Selby of Orange and formerly of Torrance, were Torrance business visitors Tuesday.



MAKES CHIEF . . . Lonnie Gray, Torrance resident who attended schools here, has made grade of chief in the U. S. Navy, after less than four years service. He has seen active service in 16 campaigns, and was home in October on 20 day leave, the first in 30 months, which he spent in Torrance with his parents and friends.

Business, professional or personal cards are readily obtainable at the Torrance Herald office. Phone Torrance 444, 443

WATCH & CLOCK REPAIRING

Fastest service in Torrance. Every job given personal attention and satisfaction absolutely guaranteed. Pre-war prices. W. T. Green, Expert Watchmaker, Torrance Time Shop, 1223 El Prado, Torrance.

FLOWERS NEEDED
Mrs. Nell Mills, publicity chairman of the V.F.W. Auxiliary, sends an appeal to the people of Lomita to contribute all kinds of flowers to the V.F.W. Post to be used for Memorial Day, May 30. Mrs. Mills requests all donations to be taken to the home of George Dannenhauer, 24693 Woodward Ave., Monday night May 29.

It's convenient to "PUT IT IN ESCROW" with Bank of America

★ At this bank, realtors and others find an efficient, prompt, dependable escrow service. The nearest branch welcomes the opportunity of serving you.

Bank of America
NATIONAL TRUST AND SAVINGS ASSOCIATION
MEMBER FEDERAL DEPOSIT INSURANCE CORPORATION - MEMBER FEDERAL RESERVE SYSTEM

SAFeway ENRICHED BREAD
ENERGY-BUILDING FOOD YOUNGSTERS NEED!

Everyone needs plenty of energy-rich foods these days! Enriched bread, like our Julia Lee Wright's White loaf, provides a generous supply for the daily diet.

Julia Lee Wright's BREAD Wheat or White 1 1/2 lb. LOAF 11c

SAFeway

POINTS EACH	BLUE STAMP ITEMS	PRICE VALUE	TYPICAL SAFEWAY VALUES	COFFEE VALUES
(2)	Baby Limas Dried Beans (Two pound bag, 21c, plus 4 points)	1-lb. pkg. 11c	Jell-well Assorted flavors of gelatin dessert	Airway Coffee Ground to order 20c
(2)	Large Limas Dried Beans (Two pound bag, 25c, plus 4 points)	1-lb. pkg. 13c	Jiffy Lou Chocolate, Butterscotch or Vanilla pudding	Nob Hill Coffee Rich Blend 23c
(1)	Pink Beans Van Camp 2-6-oz. pkgs.	15c	Morton Salt Plain or iodized	Edwards Coffee Drip or regular jar 27c
(3)	Apple Butter White House	19c	Tomatoes Gardenside Brand No. 2's Now "point free"	
(3)	Jelly Tea Garden 10-oz. jar	26c	Tomato Slices Libby 29-oz. jar	FLOUR PRICES
(18)	Tomato Juice Sunny Down Libby's 47-oz. can	21c	Del Monte Corn Cream style—Country Gentleman	Kitchen Craft Flour 10-lb. bag 53c
(1)	Juice Rolle Vegetable Juice Cocktail	8-oz. can 6c	Wylar Rice Dinner 4-oz. pkg. 6c	Drifted Snow Flour 5-pound size bag, 30c 10-lb. bag 57c
(2)	Carrots Penthouse 16-oz. can	10c	Tea Timers Spray Crackers 16-oz. can	Harvest Blossom Flour 10-lb. bag 46c
(30)	CHB Catsup (Red Hill Brand, 14-oz. bottle, 12c)	15c		PANCAKE FLOURS
(10)	Chili Sauce Kern 12-oz. bottle	11c	SHORTENING AND OIL	Suzanna Pancake & Waffle Flour 40-oz. 16c
(3)	Chili Sauce Kern 12-oz. bottle	16c	Salad Oil Jewel Brand 27c per quart 52c	Flapjack Flour Albers Brand 40-oz. 22c
(1)	Gerber's Chopped Baby Foods 2-oz. jar	13c	Snowdrift Shortening "Point-Free" 3-lb. size 67c	Pillsbury Pancake Flour 40-ounce size 22c
			Royal Satin Vegetable Shortening 3-lb. size 60c	
				SHOP EARLY IN THE WEEK AND EARLY IN THE DAY.
				CONSERVE PAPER! BRING A SHOPPING BAG
				FOR LUNCHES
				Real Roast Peanut Butter 1-lb. jar 21c
				Skippy Peanut Butter 1-lb. jar 34c
				Beverly Peanut Butter 1-lb. jar 23c
				Sardines Avilion Brand Natural Pack 15-oz. 9c
				Luncheon Meat Kam Brand 12-oz. can 29c
				GUARANTEED MEATS
				Every steak, chop and roast we sell is unconditionally guaranteed to please. Money back if you ever get one that is not satisfactory in any way!
				FRESH PICNICS WHOLE-TO ROAST 30c
				(Full Shank Half, lb., 29c; Full Round Half, lb., 31c)
				PORK ROAST RIB END OF LOIN 31c
				(Loin End Roast, lb., 33c; Center Cut Roast, lb., 38c)
				PORK BUTTS Fresh pork roast, Popular cut. lb. 35c
				LOIN PORK CHOPS Center cut loin chops. Popular cut. lb. 38c
				PORK LIVER Enjoy some smothered with onions. lb. 24c
				PORK SAUSAGE Pure pork—packed in 1-lb. Visking. lb. 35c
				LINK SAUSAGE You'll like them fried with eggs. lb. 39c
				GROUND BEEF Made under State Inspection, Visking. lb. 29c
				SKINLESS WIENERS They make perfect hot sandwiches. lb. 33c
				SMOKED PICNICS Whole. Cooked—ready to eat. lb. 35c
				PIECE BACON Grade A quality—sugar cured. lb. 33c
				SALT PORK Dry salt pork to season beans, etc. lb. 23c
				MEATS LISTED ABOVE ARE ALL "POINT FREE"
				FRESH PRODUCE
				Select your own fresh fruits and vegetables at Safeway. Deliciously fresh!
				TOMATOES Medium size tomatoes, ripe and fine flavored. Note this low price at your Safeway store. lb. 9c
				YOUNG CARROTS Just pulled. Tops are off. lb. 5c
				FRESH LETTUCE Sold by head. (OPA regulation) each 5c
				CRISP CABBAGE To cook for cabbage salad. lb. 3c
				NEW POTATOES Fancy White Rose variety. 10 lbs. 39c
				YOUR FUTURE HOME . . . And your post-war new car will be easier to buy if you are saving now by investing in War Bonds.
				SAFeway
				1301 SARTORI AVENUE, TORRANCE 2171 PACIFIC COAST HIGHWAY, LOMITA

OPEN 6 A.M. to 8 P.M.

SAY! DO YOU LIKE A GOOD BREAKFAST?

—Well we serve the best ham and eggs in town! And fellow, our hot cakes melt in your mouth!

DANIELS CAFE

1625 Cabrillo—Torrance

MONEY to LOAN

on RESIDENTIAL and Income Properties

LINCOLN SAVINGS & LOAN ASSOCIATION

Phone Michigan 4335
615 S. Spring St. Los Angeles, Calif.