

Vandals Damage New House; Police Check

Vandals caused considerable damage to the plastered walls of a house under construction at Torrance Blvd. and Crenshaw some time Saturday night or Sunday, according to a report by Police Sgt. G. S. Evans and Patrolman Thompson.

The officers said large sections of the plaster had been damaged in several rooms on the lower floor. The damage was done some time after the officers made a routine inspection of the house Saturday evening.

About 70,000 workers in New Zealand get no annual vacation.

Responsible Person
—for—
Child Nursery Care
Sunday Mornings
\$1 per Hour
Central Evangelical Community Church
CALL 1302-J - OR 131

Torrance High School Tracksters Run All Over Banning Hopefuls

BY OLIVER THAYER

Trackmen of Torrance High school rolled over Banning High school like an avalanche when the teams clashed recently and the net scores piled up were: Torrance 70½, Banning 33½.

Tartar ore of the day was Bob Leech, who captured first place in the 100, 220 and shot-put, being the only triple winner. Bill George added his sword to the conquest by taking first in the high jump and high hurdles, and third in the low hurdles, scoring 11 points for the Tartars.

Augmenting varsity victories were those of the Bee team, which beat the Banning outfit 52½ to 42½. Dick Honrath made 13¼ points in the opponents' territory.

Summaries

The summaries:
Varsity:
100—Leech (T), Warthan (T), Mollie (B). Time, 10.6.
220—Leech (T), Hinchberger (B), Shamer (T). Time, 24.3.
440—Warthan (T), Murphy (B), Bond (B). Time, 54.
880—Kent (T), Poe (T), Bul-

Harry Pflugh, 79, Dies on Visit In East

Funeral plans were made this week in Pittsburgh, Pa., for Harry Pflugh, 79, who had made his home with a son, John, in Torrance for most of the last 14 years. He was on a periodical visit to his former Pennsylvania home when death took him last week.

Pflugh is survived by his widow here; a son, W. C. Pflugh of San Diego; Milton Sands of Torrance, a step-son; and two sons, Harry and Ray, of Pittsburgh.

Mers (T), Guetierrez (B). Time, 3:57.5.
120 l. h.—Polite (B), Gonzales (B), Mello (B). Time, 15.7.
70 h. h.—Mitchell (T), Polite (B), Slotts (B). No time.
Shot-put—Halliday (B), Godard (T), Calhoun (B). Distance, 40 ft., 11 ins.

Pole vault—Tie for first, Shaw (T), Meros (B), Turner (B). Height, 8 ft., 6 ins.
High jump—Moon (T), Calhoun (B); tie, Johnson (T), Calvoun (B). Height, 5 ft., 5 ins.
Broad jump—Honrath (T), Godard (T), Miller (B). Distance, 18 ft., 4 ins.
Relay—Torrance.
Bee score—Torrance 52½, Banning 42½.

Home Rabbit Hutches Increase Meat Supply

The growing response to the government's appeal for greater home food production has brought increased demands for home rabbit production, an emergency food pamphlet prepared by H. M. Butterfield, specialist in agricultural extension, University of California.

Building and supervising a backyard rabbitry is a relatively simple task, says Butterfield. Only a small space is required for a portable standard hutch, four feet long, two and one-half feet wide and two feet high. Also, rabbits are economical to feed and very little time is necessary for their care, it was pointed out.

Copies of home rabbit production hutches for a backyard rabbitry, showing how to build a portable standard hutch, may be obtained without cost from the agricultural extension service, University of California, Berkeley, or at the office of extension service county farm advisors.

U.S.S. to Establish Center In Calcutta

Merchant seamen delivering war materials for the impending offensive against the Japs in Burma will soon find good living and recreation facilities available to them in Calcutta, according to information just received from United Seamen's Service by Ralph T. Fisher, president of the California War Chest.

Three field representatives of United Seamen's Service, the first to be assigned to India, have left for Calcutta to establish residential clubs there, which the USS will maintain in cooperation with the War Shipping Administration, Fisher stated.

Part of the funds raised by California War Chest has been set aside for United Seamen's Service, which now will have its own units on all six continents of the world. Hitherto, American seamen in India, through a special arrangement, used the facilities of the British Merchant Seamen's club at Karachi.

Legionnaires Will Show Tarawa Film

Torrance post of the American Legion today announced motion pictures of the American landing on Tarawa will be shown at Moose Hall, 1951 W. Carson st., at 8:30 o'clock April 18.

Jack Hallanger, on behalf of the post, announced the public is invited.

Jos. P. Misquirk Examines Police Court Draperies

(Editor's Note—Joseph P. Misquirk, sometimes called the "Sawyer" South Mountain—sometimes other things—is something of a character. He is regarded more-or less—as an authority on matters political, sociological and meteorological. Joe gets around quite a bit—an ancient burro, which he raised from a hot little baby out in the desert. He served in the Union Navy during the Civil War. For some years he was in the Royal Canadian Mounted Police service. In World War I, like Col. Teddy Roosevelt, he was turned down by the Army because of his age. Joe was 96 last year, but once more he volunteered his services, only to be rejected again.—D. A. A.)

We ran into Joseph P. Misquirk yesterday morning in the court room of City Judge Otto Willett in the City Hall. Court was not yet in session and Joe was alone in the room. He was examining the drapes which surround three sides of the witness chair and reach from the floor to a height of some 30 inches.

Joe had his usual "chaw" of tobacco in his mouth. He was talking, obviously, to himself. "Well, Joe," we said, "long time no see. What seems to be of interest about that witness stand?"

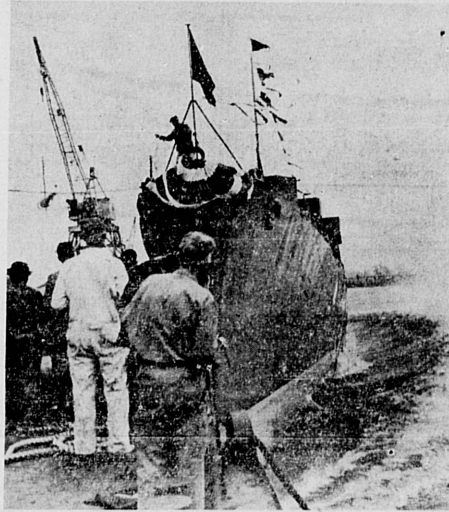
Looking up, a little startled, Joe replied: "Well now, it's like this. Here's something new in a witness stand. In a way it seems too bad to hide the natural beauties of nature. On the other hand, juries have been known to be swayed easily by certain kinds of beauty. Maybe this curtain idea is a good one, at that."

Joe located a cuspidor. We asked him what he thought of Tuesday's election results. But he was in one of his noncommittal moods. He replied: "Well, now, it's like this: I believe in rule by the majority, of course. What puzzles me is this: In a registration of voters like that for Tuesday's election, what constitutes a majority in a city of 14,000?"

GARAGE ENTERED

Claude L. Mackey of 645 Border ave. reported to the police Monday that the garage at his home had been broken into some time Sunday evening. So far as he could determine, nothing had been stolen.

Be a soldier on the home front. Give to the 1944 Red Cross War Fund.



HONOR FOR HERO HUSBAND . . . Upper photo shows Mrs. Marjorie Barnes, Torrance telephone operator, about to break bottle of champagne on bow of new destroyer bearing the name of her husband, Ensign Doyle C. Barnes, who lost his life in action at Guadalcanal. Below: USS Doyle C. Barnes leaves the ways at Orange, Tex.

Local Widow Christens Destroyer Named After Navy Guadalcanal Hero

"Number, please?"

The soft, pleasant voice that responds when you take your telephone in Torrance may be that of Mrs. Marjorie Barnes, a member of the operating staff at the local exchange.

But at times there's a catch in that soft voice, a little catch of sadness. Then quickly, a note of pride replaces it. That is when Mrs. Barnes speaks of her Navy hero husband, Ensign Doyle C. Barnes, who lost his life in action against the Japanese at Guadalcanal Aug. 24, 1942.

Marjorie Barnes is prouder than ever of her name these days and her eyes sparkle when she speaks about the launching of the destroyer Doyle C. Barnes, which she christened March 4 at Orange, Texas. It's not difficult to imagine the prayer that was on her lips as she smashed the bottle of champagne against the bow of the Barnes, over there in her husband's native state.

Mrs. Barnes lives at 2116 Grant ave., Redondo Beach. She is well known there and in Torrance. She was graduated from high school at Redondo Beach.

Port Employes Form New Bowling League

The Association of Civilian Employes at the Los Angeles Port of Embarkation has organized a bowling league, with Marjorie English of 212½ S. Temple st., Compton, elected president; Eleanor Murray of 200 W. Ocean ave., Long Beach, vice president; Doris Andrews of 1210 El Prado, Torrance, secretary, and Doris McMurray, 2349 E. 17th st., Long Beach, treasurer.

League bowling will begin on April 27 at the Premier Alleys in Long Beach. Some 20 teams will be entered and games will be bowled every Thursday night.

INCOME TAX DECLARATION
of 1944 Estimated Income Must be Made Before April 15
In Order to Avoid Penalty

CONSULT . . . **ED HAFLER**
(30 Years' Technical Experience)

LOMITA TAXICAB OFFICE . . . 24517 Narbonne Ave. LOMITA 660

Available Thursday, Friday, Saturday, This Week—9 a.m.-6 p.m.

Leading a Double Life

You give your ALL in war work . . . then turn on the glamour for your MAN home on leave! Likewise GOSSARD'S lacing cord leads a double life in the GLIDER hose supporters and LOOP-LACING gore . . . to SAVE critical rubber for war needs. (The shoulder straps on both the combination and separate bra are GLIDERS, too!) R & C* satin and knit fabric.

*Rayon (gradulament) and cotton

from \$5

Uncle Sam Says:

Eat MORE NO-POINT FOODS!

A&P SUPER MARKETS

The Great Atlantic and Pacific Tea Co.

RED STAMP VALUES

A8 to M8 valid indefinitely

SUNNYBROOK Red Salmon . . . No. 1 37¢
BILTMORE FANCY Light Tuna . . . No. 1/2 29¢
ARMOUR'S Vienna Sausage . . . 4-oz. Can 13¢
ARMOUR TREE Luncheon Meat . . . 12-oz. Can 35¢
WILSON CERTIFIED Oleomargarine . . . 1-lb. Tin 19¢
EVAP. MILK . . . 2 Tall Cans 18¢
Also Segno, Pet, Borden's, Libby's

BLUE STAMP VALUES

A8 to K8 valid indefinitely

LIBBY'S Baby Foods Can 7¢
Peaches & Pears . . . Can, 5¢
SULTANA Prune Plums . . . No. 2/2 15¢
PIG-SWEET Corn Cream . . . No. 2 14¢
MASTERPIECE FANCY Tomatoes . . . No. 2/2 17¢
VAN CAMP'S Pork & Beans . . . 27-oz. Can 13¢
ANN PAGE BOSTON STYLE Baked Beans . . . 17 1/2-oz. Jar 9¢
CAMPBELL CREAM OF Mushroom Soup . . . No. 1 16¢
Tomato Soup . . . No. 1 Can, 8¢

CUDAHY'S PORK LUNCHEON MEAT

No Bone! No Fat! No Waste! **2 1-lb. \$1.05**
2 2 can 1-

SUNNYFIELD BUTTER—Grade AA

(Quarters) **49¢ lb**
Finest Quality At a Savings!

Want a Coffee That's Vigorous & Winy?

Buy BOKAR Coffee

This grand coffee, favorite of those who prefer a vigorous and winy flavor, is a blend of fine Colombian and Brazilian coffee. 1-lb. bag, 26c.

2 1-lb. 51¢

NO-POINT & LOW-POINT Ann Page Foods!

They offer you big values in nourishment at low cost!

Syrup 16-oz. Bottle 48¢
White Vinegar . . . Pint 8¢
Gelatin . . . 3 1/2-oz. Pkg. 5¢
Sparkle Desserts . . . 6-oz. Tin 5¢
Baking Powder . . . 5-oz. Jar 21¢
Salad Dressing . . . 9-oz. Jar 8¢
Salad Mustard . . . 1-lb. Jar 8¢
Plum Jam 1-lb. Glass 23¢

SPRY SHORTENING

1-POUND JAR **24¢**

Not Rationed! No Points Needed!

NABISCO Shredded Wheat 12-oz. Pkg. 11¢
SUNNYFIELD Corn Flakes 8-oz. Pkg. 5¢
SUNNYFIELD FLOUR ENRICHED Flour 5-lb. 10-lb. Sack 51¢
KARO Syrup Blue Label 1 1/2-lb. Bottle 14¢
IONA CUT Green Beans . . . No. 2 Can 12¢
NABISCO HONEY MAID Graham Crackers 1-lb. Pkg. 17¢
A & P Matches 3 Large Boxes 12¢

SUNNYFIELD Pancake Flour . . . 5-lb. 26¢
SUNSWEEP Large Prunes . . . 1-lb. Pkg. 15¢
WOODBURY Facial Soap . . . 3 Cakes 23¢
CASHMERE Bouquet Toilet Soap 10¢
PEKE & ORANGE PEKE Nectar Tea 1/4-lb. Pkg. 18¢
SCOTCH Granulated Soap Family Size 26¢
SIERRA FINE Toilet Soap . . . 2 Cakes 13¢

LAMB LEGS Grade AA or A **37¢ lb**
All sizes! One price, none higher

FRYING CHICKENS Grade A 2 1/3-lb. Avg. **45¢ lb**

Lamb, Grade AA or A **Beef, Grade AA or A**

Shoulders Cross-cut, bone-in **25¢ lb**
Chuck Roast Blade Cuts **24¢ lb**
Small Loin Chops **53¢ lb**
Round Bone Roast **25¢ lb**
Blade Rib Chops **35¢ lb**
Short Ribs **19¢ lb**
Small Rib Chops **39¢ lb**
Boiling Beef **18¢ lb**

Smoked Meats

Sliced Bacon Grade A **39¢ lb**
Bacon Squares . . . **21¢ lb**
Piece Bacon **29¢ lb**
Salt Pork **21¢ lb**

Spiced Lunch Loaf **39¢ lb**
Cold Cuts Assorted **32¢ lb**
Bologna (Sliced) **29¢ lb**
Liver Sausage Fresh **27¢ lb**

ALL ADVERTISED ITEMS SUBJECT TO STOCK ON HAND

The Great Atlantic & Pacific Tea Company
1330 EL PRADO-TORRANCE
(TAXABLE ITEMS ARE SUBJECT TO TAX)