

BARE ROOT FRUIT TREES

Apples, Apricots, Cherries, Figs, Nectarines, Pears, Peaches, Prunes

4-ft. - 6-ft. Trees each \$1.25

BERRIES

Blackberries, Boysenberries, Loganberries, Nectarines, Raspberries, Youngberries

Each 35c—4 for \$1.00
Doz. \$2.75—100 \$17.50

RHUBARB—Giant Winter or Cherry
Strawberry 3 for \$1.00—Each 35c
ARTICHOKEs—Green Globe 3 for \$1.00—Each 35c
ASPARAGUS—Paradise or Mary
Washington 100 for \$2.45—Doz. 45c
BUSH ROSES—All varieties and colors Each 50c
CLIMBING ROSES Each 75c
ONION SETS—Yellow Bermuda 35c lb.
GRAPES—Muscat and Thompson
Seedless 25c Each—5 for \$1.00—\$2.25 Doz.
GRAPES—Niagra (White Concord) and Eastern Concord 35c Each—3 for \$1.00
SEED POTATOES—Certified White
Rose 10 lb. 60c—100 lb. \$5.00

MERRICK'S ABC NURSERY
1400 REDONDO BEACH BLVD.
Halfway Between Vermont and Western

Subscribe For the Torrance Herald Now!

Occasionally you may find some item we advertise short in supply or temporarily out of stock. Shipping delays, due to heavy movement of war supplies, and other conditions, are frequently the cause.

Fresh Eggs Large Grade A 45c
Olson Countryside. Dozen in Carton

NO-POINT FOODS FEATURE

Help Uncle Sam... and Help Yourself to Savings, Too

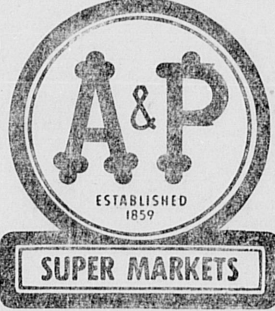
You can help the boys on the battlefield by serving more unrationed foods here on the home front... to help food fight for freedom! And remember, please... the ANN PAGE FOODS that lead this list offer you excellent quality and low, money-saving prices in addition to unrestricted purchases.

ANN PAGE MACARONI 2 1-LB. PKGS. 19c
ANN PAGE SPAGHETTI

WHITE VINEGAR 12c Quart Bottle
SANDWICH SPREAD 13c 8-oz. Jar
PEANUT BUTTER 23c 1-Lb. Jar
STUFFED OLIVES 15c 2-oz. Jar
SYRUP 19c CANE AND MAPLE 16-oz. Bottle

NIBLETS
Whole Kernel Corn
12-oz. can **12c**

We Pay You 2 Red Points and 4c Per Pound for **USED FATS!**



A&P
ESTABLISHED 1859
SUPER MARKETS
The Great Atlantic & Pacific Tea Co.

IT'S EASY TO "TOKEN SHOP" AT A&P!
Your A&P Super Market has such a wide variety of rationed foods that you're sure to find pleasing choices for your Stamps and Tokens! Study our shelves and counters carefully and pick the foods that give you the best value for your ration points and money. Remember! Each Red and Blue Stamp is worth ten points... each Red or Blue Token is worth one point!

RED & BROWN STAMPS

Brown Stamps Y and Z are valid through March 20.
Red Stamps A8, B8 and C8 are valid through May 20.

LIBBY'S Deviled Ham ... 3-oz. Can **15c**
HYDROGENATED dexo Shortening 3-Lb. Ctn. **61c**
ALPINE or CARMINATION Evap. Milk ... 2 Tall Cans **19c**
PARKAY Margarine ... 1-Lb. Ctn. **25c**

GREEN & BLUE STAMPS

Green Stamps K, L and M are valid through March 20.
Blue Stamps A8, B8, C8, D8 and E8 are valid through May 20.

IONA White Corn ... No. 2 Can **11c**
GLENWOOD Tender Peas ... No. 2 **14c**
HUNT Tomato Sauce ... 8-oz. Can **5c**

FRINCE Diced Beets ... No. 303 Glass **11c**
A&P FANCY Applesauce ... No. 2 Can **13c**
SACRAMENTO VALLEY Tomato Juice ... 47-oz. Can **20c**
SUN-MAID SEEDLESS Raisins ... 15-oz. Pkg. **12c**
CAMPBELL'S Tomato Soup ... 10 1/2-oz. Can **8c**

ANN PAGE Grape Jam ... 1-Lb. Jar **16c**
ANN PAGE Boston Style Beans ... 17 1/2-oz. Jar **9c**
ASSORTED Rancho Soups ... 3 Cans **17c**
Chicken-Noodle Soup ... 8c

IVORY SOAP
MEDIUM BAR **6c**

IVORY SNOW
LARGE PACKAGE **23c**
Med. Pkg. ... 2 for 19c

Save Ration Points—Save Money, Too!

FRUITS AND VEGETABLES!

POTATOES 10 lbs. 35c
U. S. No. 1 Idaho Russets

Lettuce 6c
Carrots bunch 7c
Cabbage lb. 3c
Apples CALIF. PIPPINS lb. 10c

Choice Hot House Rhubarb ... 2 lbs. 35c

EIGHT O'CLOCK COFFEE

1-lb. Bag **21c** 3-lb. Bag **59c**

Because of its congenial, mellow flavor, Eight O'Clock Coffee satisfies more people than any other brand in the world.

A&P Quality Meats!

BEEF ROAST Blade or Round Bone, Grade A or B **25c** lb.
SLICED BACON Fancy, Eastern—Grade A **39c** lb.

Hamburger ... 25c lb.
Pork Roast ... 29c lb.
Piece Bacon ... 29c lb.
Fancy Eastern; Sugar-cured.
Pork Sausage—Our Own Make (Bulk) 32c lb.
100% Pure Lard ... 1-Lb. Carton 19c

DASH SOAP
LARGE PACKAGE **26c**
P&G SOAP
3 LARGE BARS **14c**

ALL ADVERTISED ITEMS SUBJECT TO STOCK ON HAND
The Great Atlantic & Pacific Tea Company
1330 EL PRADO - TORRANCE
PRICES EFFECTIVE THROUGH SATURDAY

FOR LARGER CROPS OF TOP QUALITY PLANT AM reliable SEEDS

For over a half century farmers and growers have depended upon the known quality, freshness and variety of Aggeler & Musser Seeds. Remember your crop will be no better than the seed you plant. Why not get the best. Ask for AGGELER & MUSSER SEEDS in packets or bulk AT YOUR GARDEN SUPPLY DEALER or any one of our branch stores.

AGGELER & MUSSER SEED COMPANY
BRANCHES IN
BRAWLEY, GARDENA, SALINAS, VISALIA, SAN DIEGO, SANTA MARIA

Townsend Club No. 2

By MRS. M. E. ATTEBERY

Council members of Torrance Townsend Club No. 2 are urgently requested to attend an important business meeting to night at Men's Bible Class building, according to the president, Mrs. M. E. Attebery. Games and refreshments will be enjoyed.

Last week's chicken dinner was an outstanding success with more than 190 in attendance. Ted Pett of Los Angeles gave highlights of the source of Townsend club's money and of those eligible.

VOTE REGISTRAR

The J. C. Penney Company will reserve space for voters' registration desk in the lobby of their store. Hillman R. Lee, manager, announces that Mrs. Veda Peer will be deputized as registrar and this service will be available to the public commencing next Saturday, March 4. Registration books will remain open until April 6 for the consolidated primary election in May.

Jack Schlanger Purchases Store Catering to Men

A new personality makes his formal entrance to the business life of Torrance tomorrow when Jack Schlanger announces to the public his purchase of the Torrance Men's Shop from William Misselhorn.

Schlanger brings to Torrance an active career in the men's wear field covering a period of 25 years. During this time he has been active in various cities in Southern California.

"My decision to come to Torrance and purchase the Torrance Men's Shop," said Schlanger, "was a natural one. It came as a result of a study I've been making for the last few years of all of the cities in this area in order to determine in my own mind which city has the greatest possibility of growth and development during the post-war period. It seemed to me that Torrance, with its many basic industries, was that city. I hope to make many lasting friends here and contribute a small part or whatever part I am called upon to play, to the life of our community."

The general policy of featuring nationally known men's wear of the Torrance Men's Shop will be continued, he said. In addition, the store will add many new lines and a greater variety of merchandise to meet the needs of the men of this district.

Annual Rodeo Show Planned For May or June

The next annual Torrance Rodeo Show will be held late in May or early in June this year, says the statement made today by H. C. Callihan of the rodee committee and whose activities went a long way in making the show last year a success.

It is planned now to have the show earlier this season, not only because there would be little to cause worry about weather conditions but because there will be the opportunity to get some of the best rodeo animals here following the spring rodeo meeting in the L. A. Coliseum which has been tentatively set for a date in the third week in May, Callihan asserted.

Records Show Need of Homes

During the month ending Feb. 29 the federal housing centers in this area had applications from 2,334 persons in need of homes. Out of this number 487 were rented to war workers and 57 to Army personnel—a total of 524 in all. Thus, it will be noted, the demand far exceeded the supply, according to Pat MacDonnell, area housing center manager.

MacDonnell states new construction is far from keeping pace with the demand for homes, but he has been advised from builders' sources that 1,744 units now under construction will be ready for occupancy by the south coast area by April 30. The area includes Torrance, a portion of Long Beach, Wilmington and Gardena as far north as Rosecrans ave, west of Avalon.

Other projects designed to supply 2,519 units are promised in May and during the several months to follow.

In his office, MacDonnell asserted, applications are on file for 1,394 single bedroom units, 1,562 two-bedroom units, 396 three-bedroom units and 25 containing more than three bedrooms.

Bulk of the applications received recently, the housing manager stated, are coming from persons who have been either evicted or are about to be evicted due to owners selling the houses they occupied. A goodly number of these applicants have indicated the desire to purchase homes and in this group are in-migrants who are tired of trying to locate rental homes and who are planning to remain in California when the war is ended.

One-Day Honeymoon for These Young People

Following his marriage on Feb. 16 at Hermosa Beach to Miss Marjorie May Hedrick, an employee of the Longren Aircraft Company at Torrance, Eric Lovell of the U. S. Coast Guard, 19, son of Mr. and Mrs. John Lovell of 26263 Applan Way, returned to duty at Carlsbad after a brief one-day honeymoon, and his bride returned to her defense job.

The ceremony was performed in the Methodist church of Hermosa Beach, with only the immediate relatives of the couple in attendance.

FIELD CROP RESULTS

California growers of field crops had a record year in 1943 with crops valued at \$352,369,000 harvested, agricultural statisticians reported today.

If Illness Comes



Every time a pharmacist hands a patient a finished prescription he gives him the benefit of years of professional training. Your pharmacist has studied botany, physics, chemistry, biology, and associated subjects. Pharmacists are giving the public a highly specialized service.

It is our sincere wish that you may never have illness in your home. But if you do, take advantage of our personal, confidential service. Bring your prescriptions to us.

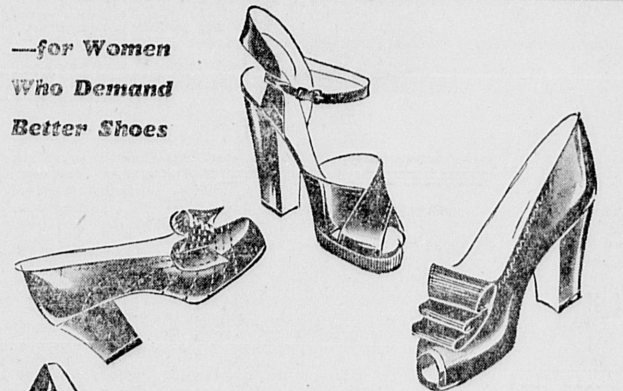
We Carry a Full Line of Vitamins of Reliable Brands Only

Do Your Share . . . Keep Fit!

BEACON DRUG CO.

LESLIE L. PRINCE, Prop.
CABRILLO AT GRAMERCY—TORRANCE PHONE 180
TRAVEL HEADQUARTERS IN TORRANCE

—for Women Who Demand Better Shoes



Just Arrived!

A LARGE SHIPMENT OF SMART EASTER FOOTWEAR

—Created by

- PARIS FASHION
- NATURAL POISE
- CONNIE

Choice of All New Colors and Styles at—

\$4.95 - \$6.95

Do Your Feet Hurt?

Much trouble is due to improper shoe fit. At Levy's you will be fitted correctly, for we have sizes from 4 to 11, and widths from AAA to EEE! Here you get your exact size!

SAM LEVY DEPARTMENT STORE

1307-1313 Sartori Ave. Torrance

Housing Center to Move New Location

The Torrance office of the Federal Housing Center expects to move to the next door west on Post st, from the Chamber of Commerce rooms at Post and Sartori ave, in a few days.

The change is being made because the chamber needs the space occupied for some time past by Pat MacDonnell and his staff.

SINUS SUFFERERS

Give our new, scientific, painless and drugless treatment a trial, relief in most cases in few minutes. This treatment cannot be had any other place in California. By appointment only. Phones Hawthorne 1758, Orchard 7-1829. Dr. Nial Ettinghausen, D.P.M., 134 South Hawthorne Blvd., Hawthorne.

Workers NEED TO KEEP FIT

Let Us Help

It Will Be a Pleasure to Serve YOU

Try a Tender Steak

OPEN 6 A.M. TO 2 A.M.

THE DUCK INN

24730 Narbonne Ave.
A Real Good Place to Eat LOMITA