

# Ideal

This is our way of thanking you! Bringing to you prices and variety of foods you have not seen for many a day! For we appreciate the patronage Torrance has given us this year! - - - and we know our friends will appreciate a sale like this at Thanksgiving time! Thanks, Folks, Come In!!

# THANKS WITH WINING

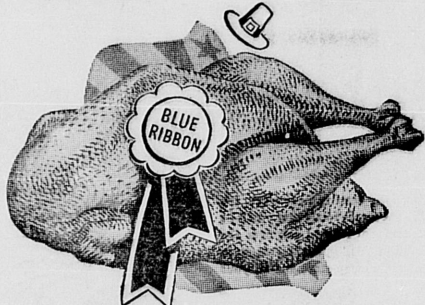
**HOURS:**  
8 A. M. to 7 P. M. DAILY  
Saturday till 8 P. M. — Closed Sunday

## FOOD SALE



**5 BIG DAYS - - FRIDAY TO WEDNESDAY** NOVEMBER 19, 20, 22, 23, 24

IDEAL — Torrance's Finest  
**MEAT Department**  
ORDER NOW!



Yes! We will have a good selection of the finest

Tom and Hen  
**TURKEYS**

—from—  
**47c to 52c** per lb.

Price Dependent on Grades Available  
**NO POINTS**

Ready Cooked Picnic  
**HAMS** 8 pts. **36c**<sup>lb</sup>  
Sliced Free If Desired

All Kinds of  
**PORK ROASTS**  
SHOULDERS and LOINS  
RIGHT PRICES FOR BEST!

Government Graded  
**BEEF ROAST AND STEAKS**

If You Don't Want Turkey We Offer You Choice . . .

**CHICKENS**  
at SPECIAL PRICES

**THE DAY BEFORE THANKSGIVING SPECIALS ONLY**  
Nov. 24—Limit One

**EAGLE BRAND MILK**  
1 Brown Point . . . . . can **20c**

**MOTHER'S COCOA**  
Point Free . . . . . 1-lb. can **11c**

**CANTERBURY MINCE-MEAT**  
Point Free . . . . . 2-lb. jar **41c**

**PISMO Minced Clams**  
Point Free . . . . . 7-oz. can **29c**

**OCEAN SPRAY Cranberry Sauce**  
10 Green Points . . . . . 1-lb. jar **20c**

**TAYLOR Sweet Potatoes**  
Point Free . . . . . No. 3 can **16c**

**DEL MONTE PUMPKIN**  
15 Green Points . . . . . No. 2 1/2 can **13c**

**MARTINELLI'S APPLE CIDER**  
Point Free . . . . . gal. **78c**

**GIANNINI DINNER WINES**  
SPECIAL RESERVE . . . 1/5 gal. **57c**

**NUTS & FRUITS**

BLUE DIAMOND ALMONDS . . . . . lb. <b>49c</b>	TENDER, SEEDLESS KADOTA FIGS . . 1-lb. pkg. <b>45c</b>
LARGE BUDDED WALNUTS . . . . . lb. <b>43c</b>	FRESH, RIPE, BLACK MISSION FIGS . . 1-lb. pkg. <b>37c</b>
BLEACHED RAISINS . . . . . 3 Green Points 12-oz. pkg. <b>13c</b>	CALIFORNIA NATURAL DATES . . 12-oz. pkg. <b>51c</b>
NATURAL SEEDLESS RAISINS . . . . . 3 Green Points 12-oz. pkg. <b>13c</b>	EXTRA FANCY CALIF. DATES 14-oz. basket <b>61c</b>
CALIFORNIA MUSCAT CLUSTER RAISINS . 15-oz. pkg. <b>29c</b>	JUNBO SANTA CLARA PRUNES . . . . . 4 Green Points 1-lb. pkg. <b>22c</b>
EXTRA FANCY CALYMYRNA FIGS . . 1-lb. pkg. <b>55c</b>	HEART'S DELIGHT LARGE PRUNES . 1-lb. ctn. <b>15c</b>

**LIBBY'S PUMPKIN** . . . . . 15 Green Points No. 2 1/2 can **14c**

**OUR BEST PICKLED BEETS** . . . . . 6 Green Points 24-oz. jar **29c**

**ZUYDER ZEE TOMATOES** . . . . . 9 Green Points No. 2 1/2 can **13c**

**YACHT CLUB SOLID TOMATOES** . . 21 Green Points No. 2 1/2 can **15c**

**VAL VITA TOMATO SAUCE** . . . . . 4 Green Points . . . . . buf. can **4c**

**KERN'S CHILI SAUCE** . . . . . 18 Green Points 1-gal. bottle **17c**

**DEL MONTE KETCHUP** . . . . . 18 Green Points 1-gal. bottle **17c**

**YACHT CLUB FRESH, WHITE LIMA BEANS** . 18 Green Points No. 2 can **16c**

**IRIS B.I.G. SWEET PEAS** . . . . . 16 Green Points 16-oz. can **13c**

**LIBBY'S GARDEN SWEET PEAS** . . . . . 18 Green Points No. 2 can **16c**

**MONARCH CUT GREEN BEANS** . . . . . 8 Green Points No. 2 can **19c**

**FAME CUT GREEN BEANS** . . . . . 8 Green Points No. 2 can **13c**

**RIALTO ASPARAGUS Spears** No. 2 can **34c**

**BUTTER KERNEL CORN** . . . . . 13 Green Points No. 2 can **14c**

**IOWANA WHITE SWEET CORN** . . . . . 13 Green Points No. 2 can **13c**

**SUNWORTHY PEACHES** . . . . . 15 Green Points No. 1 can **12 1/2c**

**DEL MONTE SLICED PINEAPPLE** No. 2 1/2 can **24c**

**WHITE HOUSE APPLESAUCE** . . . . . 14 Green Points No. 2 can **14c**

**IRIS FANCY APPLE SAUCE** . . . . . 14 Green Points No. 2 can **15c**

**WELCH'S GRAPE JUICE** . . . . . 3 Green Points . . . . . qt. **45c**

**STEWART'S BLUEBERRIES** . . . . . 12 Green Points No. 2 can **35c**

**S & F LIGHT SWEET CHERRIES** . . 23 Green Points No. 2 can **31c**

**PUNCH FRUITS FOR SALAD** . 1-lb. jar **22c**

**HEART'S DELIGHT FRUIT COCKTAIL** No. 2 1/2 can **31c**

**PICKLES AND RELISHES**  
POINT FREE

**COUNTRY STYLE PICKLES** . . . . . qt. jar **31c**

**OUR BEST DILL CHIPS** . . . . . 24-oz. jar **23c**

**COUNTRY STYLE KOSHER PICKLES** qt. jar **31c**

**DEL MONTE PICKLED CHILI PEPPERS** 21-oz. jar **25c**

**SWEET SPICED Pickled Tomatoes** 1-lb. jar **29c**

**LADY'S CHOICE SWEET RELISH** 25-oz. jar **34c**

**LIBBY'S SWEET Spiced Tomatoes** No. 2 1/2 jar **25c**

**LADY'S CHOICE Salad MUSTARD** 2-lb. jar **15c**

**Mayonnaise, Salad Dressing Sandwich Spread**  
POINT FREE  
Limit—One of Each to Customer

**ARDEN'S PURE MAYONNAISE** . . . . . pt. jar **29c**

**BEST FOODS MAYONNAISE** . . . . . pt. jar **33c**

**BEST FOODS Sandwich Spread** 8-oz. jar **19c**

**ARDEN'S Sandwich Spread** pt. jar **21c**

**ARDEN'S SALAD BOWL SALAD DRESSING** qt. jar **33c**

**KRAFT'S MIRACLE WHIP** pt. jar **27c**

**HARVEST MOON SALAD DRESSING** pt. jar **19c**

**LADY'S CHOICE SALAD DRESSING** pt. jar **21c**

**CANNED MEATS & FISH**

SWIFT'S PREM . . . . . 5 Brown Points . . . . . can <b>39c</b>	LIBBY'S Vienna Sausages No. 1/2 can <b>12c</b>
HORMEL'S SPAM . . . . . 5 Brown Points . . . . . can <b>39c</b>	CHEROKEE PINK SALMON . . 1-lb. can <b>23c</b>
SWIFT'S PREMIUM DEVILED HAM No. 1/4 can <b>17c</b>	DEL MONTE OVAL SARDINES . . . . . 12 Brown Points 1-lb. can <b>13c</b>
LIBBY'S DEVILED HAM No. 1/4 can <b>17c</b>	VAL VITA MACKEREL . . . . . 12 Brown Points 1-lb. can <b>14c</b>
LIBBY'S POTTED MEAT . No. 1/4 can <b>6c</b>	YACHT CLUB TUNA . . . . . 5 Brown Points No. 1/2 can <b>33c</b>

**THE 4 SISTERS**  
Edna . . Ruth . . Thelma . . Margaret

**FRUITS and VEGETABLES**

Don't worry about points and such . . . here at the IDEAL you'll always find rich, garden-fresh vegetables . . . and delicious fruits . . . with that extra something that will help make your Thanksgiving feast this year a real one! Courteous, friendly service always!

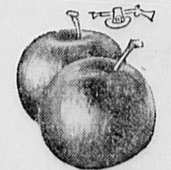


**Choice Fresh Crisp CELERY**  
The Kind You Like!

What is Thanksgiving Without Plenty of

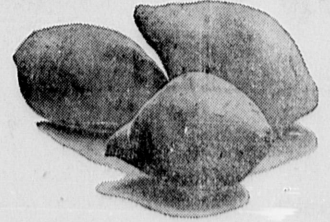
**APPLES**

—We Have 'em!



**Sure! We Have Fine Ripe CRANBERRIES**

**Delicious Golden SWEET POTATOES**



**Ideal RANCH MARKET**  
2067 TORRANCE BLVD. TORRANCE