

Firestone Toyland IS OPEN

Her Head Tilts Just Like a Baby's She's "Plassie" The New Wonder Doll!

4.98

Her head is plastic and her features have all the expression of an honest-to-goodness, real live baby! Her long-lashed eyes close and she cries, too. Plassie is exquisitely dressed from the inside out! 18 inches tall.

21-Inch Plassie Doll.....**5.95**

THEY WIGGLE, WOBBLE FLIP and FLOP!

TICK-TOCK TOYS

PETER PENGUIN . . . 1.25
His feet flap penguin style!

MINNIE MINNOW . . . 1.25
Minnie's tail, fins and eyes move.

TIMMY TURTLE . . . 89c
Timmy waddles like any turtle!

KATY CRICKET . . . 89c
She hops when you pull her.

Tick-Tock Pull Toys are Designed Exclusively for Firestone

When You Get a Rationing Certificate Buy the Best . . . the Famous

Firestone DELUXE CHAMPION TIRE

The ONLY tire built with Gear-Grip Tread for sure-footed control on wet, slippery pavement.

The ONLY tire built with the patented Saffi-Lock, Gum-Dipped Cord body, so tough the tire can be recapped time after time!

The ONLY tire built with Saffi-Sured construction, increasing tire life, providing longer mileage.

BUILT OF AMERICAN-MADE RUBBER

BUY ON THE FIRESTONE EASY LAY-A-WAY PLAN

Firestone STORES

Marcelina at Cravens, Torrance Phone 476
Listen to the Voice of Firestone Every Monday Evening Over N.B.C.

Success of Sub-Assembly Plants Depends on Canvass for Workers

Establishment of aircraft sub-assembly plants as proposed by the Citizens' Manpower committee, will depend on the number of potential workers uncovered in this area by a house-to-house census which the committee plans for the last of November, according to Harold W. Wright, secretary of the committee.

"If existence of available labor in any area is determined by the survey," he said, "the committee then will urge the aircraft industry to take over empty buildings, and install benches, machines and tools.

"Competent supervisors will be put in charge to train the workers, who would have only a short distance to travel between their homes and their jobs."

Wright said the canvass will

start as soon as volunteers are trained for the work, and printed matter has been made ready for distribution. Local defense groups have been contacted with a view to their handling the canvass here.

The plan is to raise workers for critical war industries first, in the hope a residue for civilian essential industry will remain.

In the neighborhood sub-assembly plants, mothers will be assigned to work shifts from 11 a.m. to 3 p.m., the hours in which their children are in school. Other adults will operate these small plants around the clock.

LOMITA-SAN PEDRO COUNCIL TO MEET

Due to the Thanksgiving school holidays, the November meeting of Lomita-San Pedro Council P.T.A., has been scheduled for next Thursday, Nov. 18 in the Seventh Street school, San Pedro. The meeting will be called to order at 9:45 a.m.

The meeting will feature a membership and War Chest poster contest in which the 13 local associations affiliated with the Council will enter exhibits.

Mrs. Helen Schow, 10th District art chairman and an art teacher from San Pedro, will be judges.

Harbor District Annual Scout Meeting Nov. 16

The annual meeting of the Harbor district leaders of the Boy Scouts of America will convene at 7:30 p.m., Tuesday, Nov. 16 in the Lomita Elementary school to elect officers for 1944 and to lay plans for an enlarged Scouting program.

The keynote speech will be delivered by Dr. C. C. Trillingham, superintendent of schools for Los Angeles county, who has served in an advisory capacity for Scouting in the Los Angeles Area Council for the past several years and has a message of high importance.

Troop 215 of Lomita will provide color bearers for the program. The Troop is sponsored by the Kiwanis club of Lomita and is under the leadership of Scoutmaster Robert Moffitt.

Several outstanding local civic, church and business leaders will participate in the meeting along with the chairman of the various troop and Cub Pack committees.

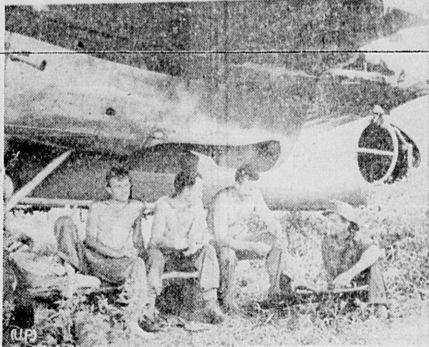
Included among the Torrance citizenry expected to participate are: Hillman R. Lee, James Lynch, Rev. Paul Moore Wheel, Rev. W. W. Jewell, Rev. W. H. Wagner, W. E. Bowen, J. Roy Winters, John E. McCall, Carl Lane and others.

17-Year Oldsters Navy Volunteers

Seven 17-year-olds volunteering from Torrance and Lomita for general service through the Navy recruiting office at San Pedro during the month of October were reported today. Names and addresses of the young men were reported as follows:

From Torrance—Gordon Thomas Clarke, 2075 Torrance Blvd.
From Lomita—James Harold Henry, Apt. 326, Harbor Hills; Jack Jean Snyder, 2318 248th St.; Y. L. Markham, 1920 257th St.; Norris Truman Thurmond, 25832 Narbonne ave.; Virgil Arthur Reno, 25833 1/2 Oak St.; Jack Worthington Lewis, 2220 248th St.

Lae Conquest Affords Pause



Yanks and Anzacs chat in shade beneath nipped Nip bomber after taking a strategic airfield at Lae, New Guinea.

Consumer Price for Turkeys Set By WFA for Coming Holiday Trade

Southland turkey prices to the consumer, based on the advance of a half cent to 3 cents per pound as approved by the W.F.A. last week, will range from 47 to 52 cents per pound at retail meat markets on prime dressed birds, 35 to 42 cents on prime drawn birds and 58 to 66 cents on frozen eviscerated stock.

This was announced today by Ed Cunningham, O.P.A. food section poultry pricing specialist for eight Southern California counties.

The "B" or choice grade birds will retail at 46 to 51 cents per pound on dressed, 53 to 61 cents on drawn and 57 to 64 cents on frozen eviscerated while the "C" or commercial grade birds will cost the consumer 43 to 48 cents for dressed, 50 to 58 cents for drawn and 54 to 61 cents for the frozen eviscerated birds.

These are the prices which will prevail at retail meat markets. Those housewives who prefer to buy their birds at live poultry markets will have two officially approved ceilings under which they will buy. Young turkeys (hens or toms) purchased live weight will cost them 44 cents per pound for birds weighing 22 pounds or over, 45 cents for 18 to 22 pound birds and 47 cents for those weighing under 18 pounds. Dressed birds

'So Proudly We Hail,' Great Film Thrill, Playing at Lomita

Paramount's "So Proudly We Hail," which opened last night at the Lomita theater, is a picture that ranks with the great screen achievements of all time. It is tops in every department and will be remembered for many years to come as one of the most thrilling, romantic dramas ever produced for the screen.

Costarred in this Mark Sandrich film are three of Hollywood's most glamorous ladies: Claudette Colbert, Paulette Goddard and Veronica Lake. They are seen as Army nurses who sail for routine duty in Hawaii but are caught in the holocaust following the attack on Pearl Harbor. Their story is based on the actual story of what happened on Batavia and Corregidor, but the movie concerns itself primarily with the vital romances between Claudette and Soldier George Reeves, the latter a comparative screen unknown who is destined to be one of the big stars of the future.

LEARN TO DANCE

TAP - ACROBATIC Thursdays—2 at 6 p.m.

VOICE - DRAMA - PIANO PERSONALITY DEVELOPMENT

Tiny Tots to Adults

Special Offer—FREE Audition Tuesdays and Thursdays

Pacific Talent Academy

1526 Cravens (Grand Theatre Building) Hollywood - Inglewood Torrance

PLAZA THEATRE

The Friendly Family Theatre
HAWTHORNE, CALIF. Telephone 299

Now Playing Ends Saturday, Nov. 13
Continuous from 2 p.m. on Thursday, Armistice Day

Bette Davis, Paul Lukas

"Watch on the Rhine"

AND

"HENRY ALDRICH SWINGS IT"

Friday Evening—Open from 5:30 p.m. til 5 a.m.

Sunday, Monday, Tuesday Nov. 14-15-16

James Cagney and Humphrey Bogart

"OKLAHOMA KID"

AND

Warren Williams in "PASSPORT TO SUEZ"

Starts Wednesday, Nov. 17

"Destroyer"

AND

"Footlight Glamour"

Come Early! Doors Open 5:30

MOOSE FIRESIDE PARTY

TOPS IN ENTERTAINMENT AND DRAMA

Entertainment: Giff Williams and his famous orchestra . . . "Moose Fireside Party" Chorus.

Drama: Professional cast reenacts deeds of heroism on far off battlefields by Mooseheart boys in the Service. Thriller!

Guest-Host Broadcast: Tune in and hear the best. Mutual Network, every Sunday, 2 p.m. KHJ

ADDITIONAL BUS TRIPS To Los Angeles and Return Effective Monday, Nov. 15

NORTHBOUND: Additional Bus

Leaves Lomita (101 Highway)..... 10:45 a.m.
LEAVES TORRANCE..... 11:00 a.m.
ARRIVES LOS ANGELES..... 11:45 a.m.

SOUTHBOUND: Additional Bus

LEAVES LOS ANGELES..... 12:45 p.m.
ARRIVES TORRANCE..... 1:30 p.m.
Arrives Lomita (101 Highway)..... 1:45 p.m.

NOTE: Southbound Bus leaving L. A. at 9:30 a.m. and arriving in Torrance at 10:15 a. m. NOW goes through to 101 Highway, arriving at 10:30 a. m.

Northbound Bus leaving Torrance at 2:30 p. m. now originates at 101 Highway, leaving at 2:15 p. m. and arriving in Los Angeles at 3:25 p.m.

Torrance Municipal Bus Lines

Hospital Cases

Among patients admitted to the Torrance Memorial hospital this week from this area were:

Mrs. Fay Douthitt, 1211 El Prado, Torrance.

Mrs. Glenn Hash, 2270 Pacific Blvd., Lomita.

Mrs. Evalyn Hutchison, 1318 Date St., Torrance.

Mrs. Odos Jacobs, 2084 Margaret St., Torrance.

Mrs. Julia Lopin, rt. 1, box 132, Emerald St., Torrance.

Mrs. Antonio Mendoza, 3400 47th St., W. Alhambra.

Mrs. Mary Thompson, 2624 Carson St., Torrance.

Mrs. Edna Chandler, 2719 Carson St., Torrance.

Mrs. Evalyn Carr, 1537 Marcelina ave., Torrance.

Mrs. Joyce Cooper, Torrance.

Mrs. Ellen Conway, 26011 Pennsylvania ave., Lomita.

Mrs. Mary Tappin, 22531 Narbonne, Torrance.

Mrs. Josephine Tapia, 3430 Emerald St., W. Torrance.

Mrs. Eva Wolverton, 2378 237th St., Torrance.

Mrs. Pearl Williams, 2157 245th St., Lomita.

Euvada Smith Charlene Dress Shop Manager

Euvada Smith, formerly of Midland, Mich., but who has been a resident of Torrance for some time, was announced this week as the new manager of the Charlene Sport Shop, 1327 Sartori ave., Torrance, being advanced from assistant manager.

Mrs. Smith has had 11 years' experience in textile merchandising. She came to Torrance a number of months ago to be with her husband, William A. Smith of the 159th Infantry, U. S. Army, before receiving his call for overseas duty.

The Modern Club in the Southwest for Ten Years

Dance to C. L. Burke's Recording Orchestra

ROYAL TABARIN

Featuring Latest Colored Revue on the Coast

PLAYING NOW - Jesse Cryer, well-known Shoe Shine Boy, and Paula Moore, the Egyptian dancer.

"Old Fashioned Love of Mr. Heath" Oaens, with LeRoy Bromfield Revue.

DINE DANCE COCKTAILS

15513 S. Western Ave.

GRAND THEATRE

PHONE TORRANCE 269

—NOW—

Fred Astaire, Joan Leslie

"SKY'S THE LIMIT"

—AND—

Judy Canova, Dennis Day

"SLEEPY LAGOON"

Show Starts 6 P.M. Friday

Sunday, Monday, Tuesday, Wednesday

Robert Young and Dorothy McGuire

"CLAUDIA"

—PLUS—

Richard Dix, Jane Wyatt

"THE KANSAN"

JACK POT KENO WED.

TORRANCE THEATRE

PHONE TORRANCE 132

—NOW—

Cary Grant and Katharine Hepburn

"Bringing Up Baby"

—AND—

Cesar Romero

"VIVA CISCO KID"

SUNDAY, MONDAY, TUESDAY

Henry Fonda and Dorothy Lamour

"CHAD HANNA"

—AND—

Tim Holt

"FIGHTING FRONTIER"

GARDEN THEATRE

PHONE MENLO 4-252

EARPHONES FOR HARD HEARING

CRITIC ROOMS FOR BABIES

—NOW—

"UNION PACIFIC"

"FOLLOW THE BAND"

SUNDAY, MONDAY, TUESDAY

"MR. LUCKY"

"THEY CAME TO BLOW UP AMERICA"

JACK POT KENO 2 FIRST RUN FEATURES