

LASTING SATISFACTION FOLLOWS EVERY TRANSACTION

THE NEW GAY SHOP

1319 Sartori, Torrance Phone 818

Summer
CLEARANCE
DRASTIC
REDUCTIONS!

SUITS
Regularly Sold up to \$22.95
\$15⁰⁰

Just about 18 Suits in this Group.
Sizes from 12 to 18. Choose, while they last **\$15**

DRESSES
\$6⁹⁰

About 35 Dresses in this Group, including Jerseys, Alpaca and Fine Cottons. Sizes range from 10 to 20.
Many Dresses in this Group sold up to \$10.95 **\$6.90**

SPECIALS!

PLAY SUITS

One-Piece **\$1.98**

PRINTED BLOUSES
Washable
Up to \$2.25 Values
Choose While About
60 Blouses Last **\$1.79**

TABLE OF ODDS AND ENDS

85 Pairs
RAYON HOSIERY
While the Lot Lasts pair **29c**
TAFFETA HAT and PURSE SETS
While They Last **\$1.00**
HATS - SNOODS FASCINATORS
Values to \$2.98; Choice **\$1.00**

The Gay Shop, 1319 Sartori

INFORMATION PLEASE

INSURANCE - AUTO - FIRE

INSURE TODAY - TOMORROW MAY BE TOO LATE!
HOWARD G. LOCKE - 1407 Marcelina Ave. - Phone 135-M

M & M TRANSFER CO.

Tel. 524-J or 52
Household goods and other merchandise shipped anywhere on the air-conditioned van. Also expert packing and storage in metal lined vaults—all at reasonable prices. Everything insured in transit to storage. 1617 Border Avenue. M & M TRANSFER CO.

SPORTING GOODS - ELECTRICAL

Complete Stock of Sporting Goods. Also Electrical Appliances and Supplies. Call us for all types of Electrical Work: New Construction, Repairing, Wiring, Alterations. Reasonable Prices. Prompt Service. TORRANCE ELECTRICAL SHOP - B. J. Scott, 1421 Marcelina Avenue, Phone 567.

Edict by Labor Board Curtails Wage Increases

The National War Labor Board's recent placing new restrictions on individual wage increases puts a heavy responsibility on employers and stringently limits voluntary wage raises. Paul Shoup, industry member of the Tenth Regional Board, declared today.

Regardless of his personal wishes every employer must comply with the law and the wage stabilization directives of the Board. "Violations are not only a criminal offense, but if any wage is illegally paid the total wage so paid will be disallowed as a business expense by the Internal Revenue department in connection with the company's income tax.

"Many employees seem to believe an employer can raise wages whenever he wants to," Shoup said. "This, of course, is not true. Management is not only subject to the general provisions of the Wage Stabilization law of last October, but under a new order by the War Labor Board, general order No. 31, effective June 1, 1943, issued pursuant to the President's 'hotchkiss' order and individual wage adjustments are now strictly controlled."

Limitations Explained
Continuing with his explanation, Shoup said: "Companies that do not have an established plan for making individual wage adjustments now must be guided by the following limitations: 'Merit increases may be made only within established rate ranges, and no employee may receive more than two merit raises a year. Not more than half the employees in a particular job classification may receive merit increases within any calendar year. No merit increase may exceed one-third the difference between maximum and minimum for the job.

"Here is an example. Suppose the established rate range for a mechanic is from 90 cents to \$1.20 an hour. The maximum merit increase possible is 10 cents an hour; one-third of the spread from low to high for the job.

"Increases based on length of service are limited to four a year and no increase may exceed one quarter of the difference between minimum and maximum for the job classification. Using the same wage rates as in the previous example, this would mean a maximum single increase of 7½ cents.

"Wage increases may be made by an employer in cases of promotion, but the Board limits these to not more than 15 per cent above his former wage, or the minimum for the new job, whichever is higher."

Held Inflation Control
The Board further limits employers by providing that "except where there has been a substantial fluctuation in employment proportionate distribution of employees within and among rate ranges must remain substantially the same from quarter-year to quarter-year."

Other wage increases, whether arrived at by new collective bargaining, agreement between management and employees, or voluntary on the part of management, must be referred to the Board for approval, Shoup declared.

If rate ranges do not exist for a particular job classification, approval of the War Labor Board must be secured before a change may be made in such a rate. In the attempt to avoid runaway inflation the National War Labor Board has felt it necessary to adopt this strict control over wage adjustments.

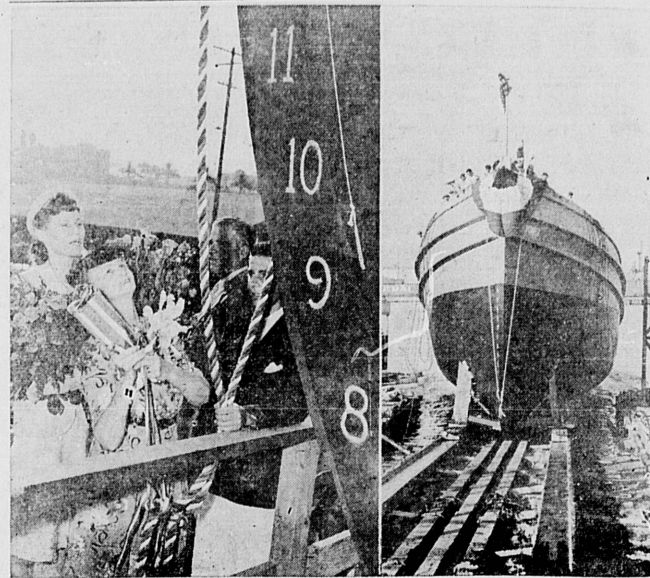
GOVERNMENTS GIVEN WAGE INSTRUCTION

Although state, county and municipal governments and their agencies are not required to seek approval of the War Labor Board for wage and salary adjustments, they are expected to make such adjustments conform with the national wage stabilization policy. The Board will neither approve nor disapprove such adjustments under its national policy.

This statement was published today by the Merchants and Manufacturers Assn. as a result of numerous inquiries as to status of such wage adjustments by governmental bodies.

The National War Labor Board has established a joint committee with the Bureau of Internal Revenue to advise on these questions. The Tenth Regional Board will advise on policy with governmental agencies in this area, the announcement said.

In Great Britain, when the present six months' surplus stocks of hats are exhausted, women will be able to buy only one new hat every three years and men can get one hat every five years.



FIRST SHIP OF TYPE LAUNCHED—"Power," largest all-wood tug built on the Pacific Coast, and the first sea-going steam tug built for the United States Maritime Commission was launched this week at the San Pedro yard of the Standard Shipbuilding Corporation. The 157-foot coal-burning tug craft was christened by Mrs. G. Bruce Newby, wife of the regional chief of wood ship construction for the Maritime Commission; matron of honor was her daughter, Mrs. Carl H. Bartlett, who resides at 1709 Florida st., Long Beach.

'Los Angeles Limited' Will Depart One Hour Earlier After Aug. 4

Effective Wednesday, Aug. 4, the Union Pacific "Los Angeles Limited" will depart from Los Angeles Union Station at 5:30 p.m., one hour earlier than at present.

"The earlier departure of the 'Los Angeles Limited' will relieve the crowded condition now at Union Station," A. V. Kipp, traffic manager, said today.

"The heavy load of military and essential civilian travel is being handled on the 'Los Angeles Limited' and 'Challengers,' all departing within a few moments of one another, and this new schedule will expedite the movement of military and civil-

Sugar Stamp No. 14 To Be Valid Aug. 16

WASHINGTON, July 29.—Sugar Stamp No. 14 in Ration Book No. 1 will become valid Aug. 16 and will be good for five pounds of sugar through October, the Office of Price Administration announced today. This is on the same basis of previous rations—about one-half pound per person per week. The present valid Stamp, No. 13, will expire Aug. 15.

O.P.A. said it made the early announcement to enable the trade to plan packaging.

Women who married at the age of 16 or younger in the first days of Canada were given money rewards.

Townsend Club No 1

By BETH PAIGE

A. O. Scholm, personal representative of Dr. Townsend, who is making a tour of Southern California, addressed the Torrance No. 1 club last Friday

evening. Afterwards the local members, with groups from other clubs, enjoyed dancing and refreshments.

Mrs. Rotha Moran of West Virginia, a former member of the club, was present. She has just recovered from a long illness and is visiting her parents, Mr. and Mrs. George Collier.



TOMATOES

Buy Now at the Ranch
WHERE YOU CAN BUY AT WHOLESALE PRICES

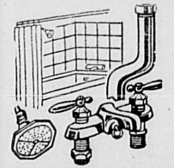
Three Acres of Pearson Tomatoes Now Ripening
Best Tomatoes Grown for Table or Canning

BUY AT THE RANCH FOR ABOUT 1/2 STORE PRICES
One Lot Field Run, You Pick per lug \$1.00
Green Tomatoes for Pickling per lug \$1.00
Fancy Table or Canning Tomatoes 5c to 10c per lb.

HOOKWAY RANCH

1 Block South of Carson, Between Crenshaw and Date Street
Torrance

"PLUMBING REPAIRS"



Take care of your Plumbing . . . to be sure it lasts for the duration. Even minor repairs should be promptly made. Call us for Expert Advice and Dependable Work.

* WATER HEATERS AVAILABLE
TORRANCE PLUMBING CO.
F. L. PARKS Phone 60
1418 Marcelina
Opposite Post Office

WESTERN'S Homefurnishings SAVINGS

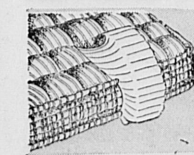
4-Piece
Bedroom SUITE
\$64⁵⁰
Easy Terms



BED • VANITY • CHEST • BENCH

Early California design carried out in fine spruce wood and finished desert sand color. A notable feature at this low price is the six-drawer vanity with genuine plate glass mirror. The chest is full sized, with four drawers. The bed, too, is full size. Better hurry for yours . . . enduring spruce is hard to get in war time. G1178.

All Felted COTTON MATTRESS



50 POUNDS WEIGHT
Full or twin sizes, stuffed with layer on layer of long fiber felted cotton. Rolled edge with four-row stitching. Durable, hotel type ACA ticking. A mattress for sound sleep and long-time comfort. G585-06.
\$19⁹⁵
Easy Terms



Coffee Maker
2-cup genuine "Six" . . . Makes delicious coffee and tea.
All glass. **\$1.45**

20-pc. Set "English Rose" Dinnerware



Our newest pattern; designed for the manor but priced for the average home! . . . Wild flower pattern with 22K pure gold leather edging, pie-crust Corinthian shape with fluted plate rims. This unusually charming set is reminiscent of Old English heirloom pieces. J1580.
\$4⁹⁵
32-pc. Service for Six **\$8.45**
53-pc. Service for Eight **\$16.95**



"Soil-Off"
Liquid cleaner removes discoloration and dirt as easily as dusting. X1776.
60c QUART

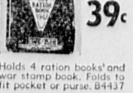
MANAGER—If you have not enough Mason Jars, advertise NU-TONE instead, Scheds. 2 and 1.



Westwood Supreme
NU-TONE
One-Coat Wall Finish
Spray it, brush it, or use the new roller. NU-TONE thins with water, dries in 40 minutes, covers practically any surface including wallpaper with just one coat. Emulsified oil base makes it permanent. GALLON
\$2⁶⁹

Work Sox
Service-weight (not too heavy) cotton. Khaki, white, black. 10-12. US-91-95 **19c**

Ration Cover
39c



Holds 4 ration books and war stamp book. Folds to fit pocket or purse. G4937

Western Auto Supply Co.

1273 Sartori Ave.—Torrance PHONE TORRANCE 265

WESTERN'S is Headquarters for Auto Supplies



PENN SUPREME 100% Pure Pennsylvania

Equal to 35c per Quart Motor Oil! . . . De-Waxed, Double Distilled, Specially Filtered! The oil that triumphs over heat and cold to keep your motor running at top efficiency, with minimum wear. Made of selected crudes, under Permit 673 of the Pennsylvania Grade Crude Association, PENN SUPREME resists the formation of sludge and hard carbon. Use it for motor protection.

PER GALLON **72c**
in your own can
Federal Tax Included

2-Yr. Guaranteed WIZARD Super Power BATTERY

Quick starting and extra power when you need it! WIZARDS have oversized "Oxi-Vite" plates, genuine Port Orford Cedar separators, non-overflow vent plugs, and one-piece molded case.
\$6⁴⁵
Exchange



GRADE 1 TIRES



AVAILABLE NOW TO MANY MOTORISTS!

Under O.P.A. regulations, if you drive over 240 miles per month, you may be entitled to Grade 1 Tires . . . and, if you are, you'll get MORE for your money with . . .

WESTERN GIANTS

- Popular 16 and 17-inch Sizes
- All New Materials
- Pre-War Stock
- Low, Money-Saving Prices
- DOUBLE DUTY
- Standard First Line Quality
- MULTI-GRIP—Extra Quality
- SILENT GRIP—Super Quality Tires

Ask for Our Low Prices
We will be glad to help you with information regarding tire certificates.

Western Auto Supply Co.

1273 Sartori Ave.—Torrance PHONE TORRANCE 265