

ELEMENTARY P.T.A. TO INSTALL OFFICERS

Mrs. W. E. Bowen will be installed president of Torrance Elementary P.T.A. at 2:30 p.m., Tuesday, June 22 in a ceremony conducted by Mrs. J. J. Millard, president of Lomita-San Pedro Council. Mrs. E. F. Pisel will become first vice-president, R. J. Strand, second vice-president; Mrs. W. J. Vernon, secretary; Mrs. Curtis Brown, historian, and Mrs. Lila Deleissegues, auditor. The graduation class will be presented. Citizen Corps awards will be given to members who have given 50 hours of service during the past year.



DESSERT BRIDGE PARTY FRIDAY

St. Cecilia's Guild of St. Andrew's Episcopal church will entertain at a dessert bridge at Guild Hall at 8 p.m., Friday. Hostesses for the benefit affair are Mrs. Donn L. Sears, chairman, Mrs. J. B. Scotton and Miss Florine Franklin.

RETURN TO DUTIES AFTER VACATION

Mrs. Willis M. Brooks returned to her duties at Torrance Memorial hospital this week following a week's vacation at San Francisco as the guest of Mrs. Laura Bowley. Mrs. Brooks was also a guest at many home parties during the weekend at Stanford University campus, where she attended graduation exercises.

ROYAL NEIGHBORS CHANGE MEETINGS

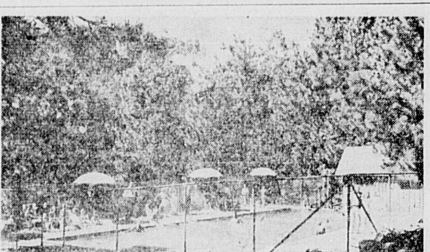
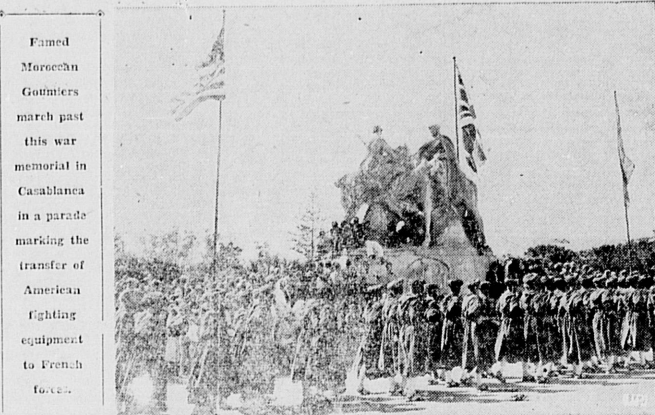
Torrance Camp, No. 8908, Royal Neighbors of America, announce a change of meeting time to the first and third Wednesday of each month. The next business meeting will be held at the Men's Bible Class bldg., Wednesday, July 7. Members are urged to attend.

Mrs. Mary Schroeder was elected as secretary to complete the unexpired term of Mrs. Doris Lydy, recently resigned.

DESSERT BRIDGE PARTY ENJOYED

The home of Mrs. May McKenley was the setting for a party Thursday afternoon when she entertained at a dessert bridge. Mrs. Ovidia Peitzke was a club guest. Prize winners at contract were Mmes. H. S. McManus, A. P. Stevenson and J. O. Moore.

Moroccan Goumiers Parade in Casablanca



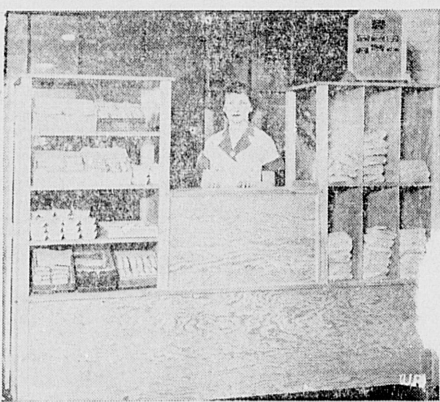
SWIMMING POOL—Free swimming lessons are part of the activities at the \$100,000 family resort Pine View Lodge (Beverly Pines), located in mile high San Bernardino mountains near Lake Arrowhead.

Families With Children Preferred

Restricted to families of fine character Pine View Lodge offers a vacation spot where parents can take their children and enjoy with them a perfect vacation. Skipper Steimle and a staff of trained leaders offer a rich activity program all will enjoy.

Located in the Lake Arrowhead area near Blue Jay, California, Pine View Lodge is easily accessible to Southern California residents. This is important for it will enable families to enjoy a "patriotic" vacation—close to home, at a healthful moderately priced resort.

Lunch Rolls to Workers



Instead of workers going out to lunch, lunch now rolls in to them, in one Philadelphia war plant. The food is displayed on this big rolling counter, and service is rapid.

Noted Bible Teacher to Conduct Series

Rev. Britton Ross of Glendale will begin a series of Bible class lessons next Monday at 7:30 p.m. at the First Baptist church. He has had wide experience as a Bible teacher and is a world traveler. Rev. Ross was here recently for a two weeks' series and is now returning at the request of the congregation. He will teach the Sunday School Bible class in addition to the Monday night sessions. The public is cordially invited to attend.

Singing fires often produce a job for singing choirs—at somebody's funeral.

RETURNS HOME

Mrs. C. B. Mitchell, who has been visiting at the home of Mrs. M. L. Joy, 20602 North Royal, Hammerton Tract, returned to her home this week.

END BEACH STAY

Mrs. Henry Wertalla returned Thursday from a two months' visit at Pismo Beach where she has been in the interest of real estate holdings there.

JOINS HUSBAND

Mrs. F. N. Roberts of Los Angeles, a sister of Mrs. Hillman R. Lee, left this week to join her husband, an Army captain, recently transferred from Cordova, Alaska to Macon, Ga.

On FATHER'S DAY Greet Him with a WAR BOND

You said it! . . . Thirteen Billion Dollars are required . . . that can't buy, brother! Pitch with the old man and buy a Bond today!

"Our Coffee Is Famous"
Busy Bee Cafe
1401 SARTORI Next to Torrance Theatre

WORKERS ENJOY PICNIC OUTING

Members of the M. & M. Transfer personnel and their families were entertained Sunday at Torrance city park at the group's annual all-day picnic. Also included were Ideco workers and their families, swelling the attendance to more than 150. A ball game, competitive games and other sports events with prizes for the winners were run off.

NAVY MOTHERS TO MEET JUNE 21

The Little Hills Navy Mothers' Club No. 147 will meet Monday, June 21, at the home of Mrs. Max Long, 25823 Lucille ave., Lomita. An all-day sewing meeting will be held at the home of Mrs. Velma Lahr, 25004 Eshelman ave., Tuesday, June 22.

ENTERTAIN SEAMAN

Mr. and Mrs. Harold Clemmer entertained at dinner Monday evening for her brother, Sam Barker, seaman 1/c. Music and other entertainment were features of the evening.

The pikia, a Rocky Mountain rodent, can throw its voice like a ventriloquist when alarmed.

EFFECTIVE JULY 1st

WAR DAMAGE INSURANCE

BECOMES RENEWABLE

The large fire insurance companies make this protection available at a low, non-profit rate. I suggest you renew your policy, and if you do not have one—CALL ME AT ONCE!

Ila M. Gilbert
1631 COTA AVE.
PHONE 420

LASTING SATISFACTION FOLLOWS EVERY TRANSACTION

THE NEW GAY SHOP

1319 Sartori, Torrance Phone 818

New Summer SUITS by Anthony \$17.95

As Cool as the Ocean Breeze!
Tailored to Perfection!
Sizes from 12 to 20
Choose Yours NOW!

Vacation Specials!

at \$3.98

- SKIRTS, plain shades and plaids
- FITTED JACKETS
- SWEATERS, short and long sleeves, slip-over and coat styles, plenty of fancies
- SLACKS, all sizes and shades
- PLAY SUITS

Choice of Any Above Items, each \$3.98

THE SMARTEST AND NEWEST IN COSTUME JEWELRY . . . \$1

New Earrings, Initial Pins of Plastic, New Beads and Scores of New Coat and Dress Pins

HUNDREDS of GREEN MARKERS—indicate hundreds of non-rationed items at Safeway

It's easy to locate foods that take no ration points when you shop at Safeway. Just look for the green markers—they'll guide you to "point-free" items.

THEY'RE YOUR SIGNAL TO GO AHEAD AND BUY!

BREAD & CEREALS

Fresh Bread 1-lb. 8¢	1 1/2-lb. leaf 11¢
100% Bran Nabisco Brand 16-oz. pkg. 17¢	18-oz. pkg., 9c
Shreddies 12-oz. 12¢	
Puffed Wheat Anderson's Brand 6-oz. pkg. 5¢	11-oz. pkg. 8¢
Post Toasties 8-oz. pkg. 8¢	
Albers Corn Flakes Kellogg Brand 5 1/2-oz. 11¢	
Rice Krispies Kellogg Brand 12-oz. pkg. 13¢	
Grape-Nuts Flakes 7-oz. pkg., 9c	
Raisin Bran Skinner's Brand 10-oz. 11¢	

TYPICAL SAFEWAY VALUES

Brown Derby Beer 6-oz. bott. 17¢	
Monte Cristo Wines Muscatel, Part or Sherry. 24-oz. bott. 69¢	
Roma Wines Muscatel, Part or Sherry. 24-oz. bott. 75¢	
NOTE: Beer and wine are offered for sale only in Safeway Stores licensed to sell them.	
Imitation Vanilla Westog Brand 8-oz. bottle 10¢	
Sauerkraut Juice Hamilton Brand 12-oz. 9¢	
"A1" Long Macaroni Globe Long spaghetti, 12-oz. pkg. 10¢	
DeLuxe Soup Mix Chicken & Noodle soup, Dehydrated. 2 pkg. for 19¢	
Barker Soup Mixes Assorted flavors. 3 pkg. for 25¢	
Leslie Salt Plain or Iodized 2-lb. 7¢	
Kool Cigarettes (Carton, \$1.33.) 2 for 27¢	
SAS Beef Scraps 6-oz. pkg. 10¢	
Kellogg's Gro-Pup 25-oz. 25¢	
Flyrol Fly Spray Kellogg's Gro-Pup Meal, 11-oz. pkg. 10c per quart 32¢	

KITCHEN CRAFT FLOUR 2-lb., 12c; No. 5 bag, 24c No. 10 Bag 44¢

FLOUR HARVEST BLOSSOM BRAND Economical flour. 24 1/2 lbs., 93c No. 10 Bag 41¢

DRIFTED SNOW Enriched flour. No. 5 bag, 31c No. 10 Bag 58¢

WALNUTS DIAMOND BRAND Large, fancy budded walnuts. lb. 32¢

MUSTARD PURITAS BRAND Prepared mustard sauce. 30-oz. Jar 15¢

SU-PURB SOAP Kind to hands. 24-oz. box, 21c. 50-oz. Box 39¢

IVORY FLAKES For all fine laundering. 12 1/2-oz. Box 23¢

BORAXO HAND CLEANER Made with borax. 10-oz. Pkg. 25¢

POINTS EACH BLUE STAMP ITEMS

(4) LIMA BEANS Large, cook tender. 1-lb. pkg. 12¢	
(8) LIMA BEANS Choice, large limas. 2-lb. pkg. 24¢	
(1) CHERUB MILK (Small, 2 for 9c, plus 1 point.) tell can 9¢	
(1) BORDEN'S MILK Pure evaporated. 2 tell cans 19¢	
(5) DALEWOOD MARGARINE Vitamin A enriched. pe lb. 21¢	
(5) NUCOA MARGARINE Pure vegetable margarine. pe lb. 26¢	
(5) ROYAL SATIN Vegetable shortening. 1-lb. jar 22¢	
(15) ROYAL SATIN Vegetable shortening. 3-lb. jar 60¢	
(5) CRISCO Crisco is digestible. 1-lb. size 24¢	

AT SAFEWAY MEAT SECTIONS: PACKAGED LARD

1-lb. Package Pure—snowy white. 19¢	4-lb. Package Plus 5 red points. 76¢
-------------------------------------	--------------------------------------

FREE! FOR LIMITED TIME ONLY

ONE QUART OF WHITE MAGIC

THE SCIENTIFIC HOME CLEANER

FREE WITH PURCHASE OF HALF GALLON

WHITE MAGIC Full Strength bleach, (5.25%) HALF GAL. 17¢

Prices in this advertisement, except those on fresh produce, are effective through Saturday, June 19, 1943

VALUES IN FRESH PRODUCE

Serve one more vegetable FRESH every day. Save ration points and enjoy flavorful, vitamin-rich food.

WATERMELONS Klondyke melons—ripe and sweet. Every melon guaranteed. lb. 4¢

DRY ONIONS Your choice of red, white, or yellow onions. Note price! lb. 6¢

CABBAGE Crisp, fresh, solid heads of cabbage. lb. 3¢

CARROTS Young, fresh carrots. Tops have been removed. lb. 4¢

BEETS Fresh, tender beets. Serve them buttered. lb. 4¢

ORANGES Ripe, sweet Valencia Sold by the pound. lb. 7¢

APRICOTS Royal variety, ripe apricots. Delicious! lb. 13¢

PLUMS Santa Rosa variety. Excellent for lunches. lb. 13¢

SAFEWAY

WE RESERVE THE RIGHT TO LIMIT. NO SALES TO DEALERS.

TWO BIG MODERN STORES TO SERVE YOU
1301 SARTORI AVENUE TORRANCE
2171 REDONDO - WILMINGTON ROAD LOMITA