

### Free Booklet at Firestone Store Has Aids for Motorists

What would you do if serious threat to life or property made it necessary for you to get gasoline immediately without the use of ration coupons? If you should lose your ration book, what steps would be necessary to replace it? What should you do with your ration book if you dispose of your car? Can you

now have your tires recapped without a rationing certificate? These and scores of other questions pertinent to the operation of an automobile under war emergency regulations are answered in a new booklet now available without charge at the Torrance Firestone store at Marcelina and Cravens ave.

**DUE HOME**  
Mr. and Mrs. Sam Levy will return tomorrow from a three weeks' trip to New York and other eastern cities.

### Guards to Protect Park Requested

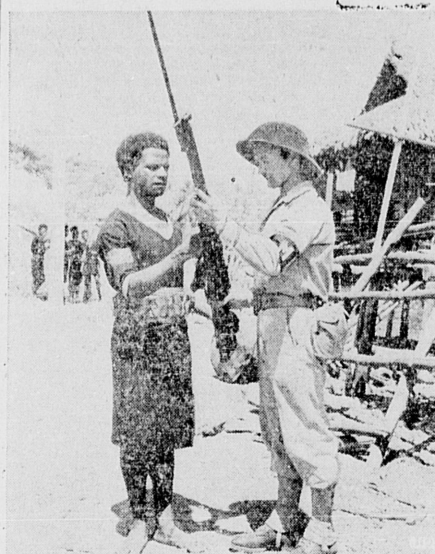
Because of the shortage of officers, Police Chief John Stroh asked the city council Tuesday night to provide additional guards to watch the city park property and buildings after the regular staff leaves for the day. No action was taken on the request. Councilman George V. Powell saying: "We'll take care of that later on."

### Bomber Pilot Will be Honored at T.H.S.

Next week's sale of War Bonds and Stamps at Torrance high school will honor Lieut. Carroll Joe Bender who is now piloting a Liberator bomber in raids over Europe.

**ON FISHING TRIP**  
Fishing at Lake Henshaw last weekend were Dr. O. E. Fossum and son, Lloyd, J. E. McMaster and J. H. Fess.

### His Rifle Is Neat



Jirigari, corporal in the Royal Papuan Constabulary, displays a neat rifle for inspection by Private Walter S. Cooper, military policeman from Baltimore. New Guinea policemen are extremely proud of their uniforms and their weapons.

### Council Authorizes Juvenile Study by New Commission

(Continued from Page 1-A)  
son. However, it is this war psychology which complicates and renders more venomous the attack on our community of this wave of delinquency.

"Because of the relaxing of moral standards which always attends a war, because of the unusual strain on parents' energies as a result of wartime demands and because of the pre-occupation of the minds of people in general with matters pertaining to war and civilian defense, little thought is given and little effort spent on providing our youth with the clean, happy, character building environment which is their heritage as American children.

**Seek Understanding**  
"Some, however, will demand action. It is in their names that I direct this letter.

"If we approach this matter with the attitude that all youth who do wrong are bad and that their offenses are the inevitable manifestation of an evil and distorted psychology and that the best we can do for them and for society is to rush them off to jail, we are being either stupid or lazy—or both. We must first try to understand the youth psychology; find out what makes them act as they do instead of evaluating their conduct according to the rule of adult behavior.

"When we have discovered the factors which govern their conduct we will have established a basis upon which to take intelligent measures for meeting the problem.

**Immediate Action Vital**  
"In an attempt to get a constructive program under way I am going to suggest that the city council without delay adopt a resolution authorizing the formation of a Youth Commission whose duty it will be to make a thorough and exhaustive study of youth delinquency statistics, conduct surveys and examinations to determine the cause or causes for the condition, and to finally make recommendations to the city council based on its findings.

"Toward that end, I suggest that the city council direct a letter to the following institutions calling upon them each to appoint one representative to act as a member of the Commission: Rotary club, Kiwanis club, High School, High School P.T.A., Ministerial Association, Torrance C.I.O., Coordinating Committee, and three members at large to be selected by the members named above. Following the direction of the letter the city council's connection with the Commission would simply

consist of giving such assistance as insuring the cooperation of the various city departments in order that the most effective results may be obtained.

"It is imperative that the council recognize its responsibility in this matter. Certainly if Torrance is suffering from an epidemic of youth crime and if the epidemic should continue to spread because of inaction, then the city council, whose duty it is to provide for the safety and welfare of the community, will be held to answer and properly so. I urge immediate action. —It is later than you think!"

### Townsend Club No 1

By BETH PAIGE  
Friday evening we shall entertain with a cake and ice cream social. There will be the usual program of games, followed by dancing. All are welcome to attend.

**RETURNS HOME**  
Lon W. Ralston returned to his home here this week for a vacation from his duties at Pittsburgh.



### Blood Pressure Test etc. Your Vital 'Pressure'

If your blood pressure is varying "down" or "up"—it is a health signal which should be heeded. Know how you stand by coming here for a revealing Blood Pressure Test. And for an explanation as to how Chiropactic, by natural methods, serves to normalize blood pressure and increase bodily health and vigor!

### Dr. Phil M. Moore

REGULAR HOURS  
Monday Thru Friday—  
9 A.M. - 8 P.M.  
Saturday—10 A.M. - 8 P.M.  
Other Times by Appointment Only  
PHONE 482  
Torrance  
If No Answer—Call 877



## Holding Prices Down is An Old Story to Us!

Giving consumers more food for their dollars is nothing new to A&P. We've specialized in keeping prices down through three wars . . . and we're hard at it today! Because A&P brings foods from source to sale in the most direct manner possible, many "in-between" costs are completely eliminated . . . and you share in the savings. Because A&P Markets sell hundreds of items under one roof . . . each item helps to reduce selling costs. Then, too, there are A&P's own brands, priced at exceptional savings. For more for your money, today and every day, look in on your nearby A&P Super Market.

---

### FRESH FRUITS and VEGETABLES

**NEW POTATOES** 10 lbs. **36¢**  
U. S. No. 1—White Rose—Vitamins B<sup>+</sup>, C<sup>+</sup>

**CANTALOUPE** JUMBO (36's) Vitamins A<sup>++</sup> and C<sup>++</sup> each **20¢**

**WATERMELONS** KLONDYKES IMPERIAL VALLEY Vitamin C<sup>+</sup> . . . lb. **4¢**

**CABBAGE** SOLID HEADS Vitamins B<sup>+</sup> and C<sup>++</sup> . . . lb. **6¢**

**CARROTS** Vitamins A<sup>++</sup>, B<sup>+</sup> and C<sup>+</sup> . . . bunch **5¢**

**Santa Rosa** . . . lb. **25¢**

THESE ARE NOT RATIONED!

SUNNYFIELD Assorted Cereals

10 Individual packages (7 Kinds) **18¢**

Rice Puffs SUNNYFIELD 8-oz. package **9¢**

Kellogg's Shredded Wheat Biscuits 12-oz. package **10¢**

No Points Needed!

**FRESH SOUTHERN** Fillet of Sole . . . 49¢ lb.

**FRESH SOUTHERN** Ling Cod Shred or by the piece . . . 27¢ lb.

**FRESH SOUTHERN** Halibut Steaks . . . 39¢ lb.

**FRESH SOUTHERN** Sand Dabs . . . 19¢ lb.

Olson Brothers FRESH EGGS

Medium Grade A 43¢

Dozen packed in Carton

RED STAMP VALUES

RED STAMPS—J, K and L are now valid.

Libby's Vienna Sausage 2 4-oz. **2/25c**

Snowdrift Shortening 3-lb. Jar 15 48-oz. **67c**

**CHEESE** MEL-O-BIT AMERICAN 16 2-lb. LOAF **70¢**

Mazola Oil quart 10 32-oz. **57c**

Nutley Margarine 1-lb. Ctn. 5 16-oz. **18c**

Salmon Alaskan Chum No. 1 Perfect Strike Can 8 15-oz. **20c**

Chicken of Sea Tuna No. 1/2 Can 4 7-oz. **30c**

Gudahy's Tang Luncheon Meat 5 12-oz. **34c**

Gudahy's Deviled Meat 1 5 1/2-oz. **9c**

Libby's Deviled Meat 1 3 1/2-oz. **2/11c**

Allsweet Margarine 1-lb. Ctn. 5 16-oz. **25c**

BLUE STAMP VALUES

BLUE STAMPS—K, L and M are now valid through July 7

Kadota Figs Delhi 8 15-oz. **10c**

Cherries Red Sour-Pitted Alberta Queen 14 20-oz. **20c**

Fruit Cocktail Sultana 15 16-oz. **12c**

Blackberries No. 2 Can 10 20-oz. **18c**

Libby's Corn Golden Bantam No. 2 Can 14 20-oz. **15c**

Niblets Corn-on-the-Cob Without-the-Cob 12 12-oz. **12c**

A&P Cream Corn Golden Bantam No. 2 Can 14 20-oz. **13c**

Del Monte Peas Early Garden No. 2 Can 16 20-oz. **16c**

Tomatoes Arm-in-Arm No. 2/2 Can 21 29-oz. **13c**

Asparagus Spears A&P Brand No. 1 Can 12 16-oz. **27c**

Val Vita Catsup 10 14-oz. **10c**

Iona Peaches Sliced or Halves No. 2/2 Can 21 29-oz. **17c**

Iona Pears Halves No. 2/2 Can 13 29-oz. **2/43c**

1330 EL PRADO TORRANCE

BETWEEN SARTORI & CRAVENS - FREE PARKING

ALL ADVERTISED ITEMS SUBJECT TO STOCK ON HAND  
WE RESERVE THE RIGHT TO LIMIT QUANTITIES  
Due to uncertainty of shipping conditions, advertised items sometimes may not arrive in time to take care of early shoppers

RED STAMP VALUES

RED STAMPS—K, L and M are now valid through July 7

Kadota Figs Delhi 8 15-oz. **10c**

Cherries Red Sour-Pitted Alberta Queen 14 20-oz. **20c**

Fruit Cocktail Sultana 15 16-oz. **12c**

Blackberries No. 2 Can 10 20-oz. **18c**

Libby's Corn Golden Bantam No. 2 Can 14 20-oz. **15c**

Niblets Corn-on-the-Cob Without-the-Cob 12 12-oz. **12c**

A&P Cream Corn Golden Bantam No. 2 Can 14 20-oz. **13c**

Del Monte Peas Early Garden No. 2 Can 16 20-oz. **16c**

Tomatoes Arm-in-Arm No. 2/2 Can 21 29-oz. **13c**

Asparagus Spears A&P Brand No. 1 Can 12 16-oz. **27c**

Val Vita Catsup 10 14-oz. **10c**

Iona Peaches Sliced or Halves No. 2/2 Can 21 29-oz. **17c**

Iona Pears Halves No. 2/2 Can 13 29-oz. **2/43c**

USE COUPON NO. 24 FOR A&P COFFEE!

THERE'S NO BETTER COFFEE AT ANY PRICE!

● The experts who select America's favorite coffee report that no coffee can give you more good cups per pound than A&P Coffee. Remember too, you can't get better coffee at any price, for A&P Coffee is the pick of the plantations. Use Coupon No. 24 wisely . . . use it for A&P Coffee.

1 LB. BAG

**21¢**

1 LB. BAG

**24¢**

1 LB. BAG

**26¢**

### RED LETTER TAX DATES

Here is Guide to Important Steps in Pay-As-You-Go Tax Plan Now Awaiting President's Signature

John L. (for income) Taxpayer should get out his red pencil and mark these dates on his calendar if the pay-as-you-go revenue collection bill awaiting President Roosevelt's action becomes law:

**JUNE 15**—Pay the quarterly installment as usual on 1942 income tax. (You'll get credit for this and the March 15 installment as payments on your 1942 income.

**JULY 1**—Be not too surprised when the boss starts deducting from your pay 20 per cent of all over basic exemptions of \$12 weekly for single persons, \$24 weekly for married (plus \$6 for each dependent. He'll be ordered to do that and turn it over to the treasury as current payments on victory and income taxes.

**SEPT. 15**—If you're single and make more than \$2700, or married and make more than \$3500 file with your employer an estimate of your 1943 earnings and pay one-fourth of the excess over the amount being withheld from your salary. If you get your money from sources other than wages or salaries, file an estimate and pay one-fourth of the total tax.

**DEC. 15**—Second and last chance to estimate your 1943 income upward or downward (if you are more than 20 per cent under on your guess, the treasury will charge you 6 per cent interest penalty). Pay a quarterly installment. Farmers may file their first estimate (have 33 1/2 per cent leeway on guess).


**JAN. 1, 1944**—Happy New Year and you should have that satisfied feeling of being technically all even with Uncle Sam on your income tax for the first time in history.

**MARCH 15, 1944**—Comes the day of final reckoning. Compare your final, actual tax liability with what you paid in 1943 in withholding taxes or quarterly

installments, get a rebate or pay the remainder. If your 1942 tax was not all abated but only 75 per cent of it, pay one-half of the remainder on this date.

Figure your 5 per cent Victory tax, take the deductions, and pay the additional over what has been withheld, or get a rebate. Estimate your 1944 income if it is not from wages or salaries and make a quarterly payment on it. If 20 per cent is withheld from your pay and you are single and make more than \$2,700 or married and make more than \$3,500, figure the difference between your total estimated 1944 tax and the amount to be withheld and pay one-fourth of it.

**MARCH 16, 1944**—Take a few days vacation to recuperate.



## Come in and have a friendly chat about your personal loan problem. You are welcome anytime.

Bank of America

NATIONAL TRUST SAVINGS ASSOCIATION  
MEMBER FEDERAL DEPOSIT INSURANCE CORPORATION  
MEMBER FEDERAL RESERVE SYSTEM

## Remember Dad on Father's Day June 20th

# Phoenix Socks

Whether Dad is conservative . . . inclined toward casualness or goes in for gay, bold patterns we have Phoenix Socks to meet his preference. In all popular fabrics . . . Fly-Right or Regular lengths. Sizes 10 1/2 to 13.

50¢ and up



PHOENIX Socks

If DAD'S In the Service . . . ARMY AND NAVY SOX Single pair **45¢** 6 pairs \$2.75

## SAM LEVY

DEPARTMENT STORE

1307-1313 SARTORI AVE. TORRANCE