


Timeplan

LOANS FOR TAXES



If you're short of cash to meet the first installment on your Federal Income Tax (due March 15), a Bank of America Timeplan loan will help you solve your problem. Timeplan is the leading personal and family bank credit service in California. It is a service that has brought low-cost credit to more than three million men and women during recent years.

You can arrange your Timeplan loan for income or other taxes at any branch. Monthly payments to suit your convenience. The sooner you repay the loan, the less it costs. Take advantage of this quick, friendly service now!

Bank of America

NATIONAL TRUST ASSOCIATION
Member Federal Deposit Insurance Corporation
Member Federal Reserve System

Columbia Workers' Hospital Plan Issues Second Report

Operating at the exceptionally low cost of six per cent for overhead expenses, the Columbia Steel Employees Hospitalization Plan has started its second year here with more than 700 members and a reserve fund of \$4385 of which nearly \$3000 is invested in War Bonds, John H. Hanks, bookkeeper and secretary, announced this week. The Hospitalization Plan, operated entirely by Columbia employees, has increased its benefits to members without increasing premiums (\$1.50 per month) during the past year.

A total of \$5,319.92 was paid last year for 151 claims while operating expenses were only \$504.96, this figure representing a saving of two per cent in costs during 1942, according to a joint financial statement issued by Hanks and George Schmid, treasurer.

"The first six months of 1942 our Plan operated with a loss of more than \$500," their statement reads. "This shows the need of a fairly large reserve fund to take care of seasonal fluctuations in claims and possibility of a large scale disaster. The Plan, however, did recover that loss the last six months of the year and was able to increase its reserve fund.

Benefits Are Reported
"The benefits obtainable under our Plan are much greater than any insurance you may buy outside the plant. This is because of our low overhead. Many other hospitalization plans have, the past year due to increased costs, been forced to discontinue or to raise the premium charged. There has been no increase in our monthly dues, and we have increased our benefits the past year."

Following is a brief summary of the benefits allowed by the Columbia Employees Hospitalization Plan with changes noted:

For case requiring hospitalization: Payment for 90 days a year for hospital room at \$5.50 per day. (This is an increase of \$1 per day formerly allowed.)

Payment of all surgeons' fees (as listed in fee schedule). Payment of assistant surgeons' fees (up to \$25). Payment of hospital extras up to \$50. (This includes X-ray, operating room expense, anaesthetic, administration of anaesthetic, ambulance fees, laboratory work and medicine. (Necessary medicines for hospitalized cases was added this year.)

For cases not requiring hospitalization: Payment for 60 calls at \$2 per call to any licensed physician or surgeon. This

applies to any single accident or sickness, but unless minor surgery is required or unless two or more days of work are lost, participants must pay for the first three calls. Payment of a sum up to \$50 for X-ray and laboratory tests if such X-ray and lab work is required by the doctor for purpose of diagnosis. (This was added in 1942.)



PLANS VISIT—Mrs. Anna N. Catlett, president of the Rebekah Assembly of California, will make an official visit at Trio Rebekah Lodge, No. 240, at the Veterans' hall in Lomita next Wednesday night, Mar. 10.

State Legislators Have Housing Problem to Solve

SACRAMENTO. — It used to be a hobby to be a state legislator, back when the state had few worries, housing was cheap, and sessions were short. But wartime has brought its headaches to the lawmakers, not the least of which is where to eat and sleep while in Sacramento.

The Sacramento Chamber of Commerce was horrified during the January session when the assembly put through a resolution condemning high rents in hotels and apartments. The action was rescinded and some of the landlords made hasty amends.

Now with the second half session only a few days away, members are scouting around looking for accommodations, which is complicated by the fact that house and apartment owners aren't too pleased to rent to legislators here only a few months, in contrast to more permanent war workers and regular tenants.

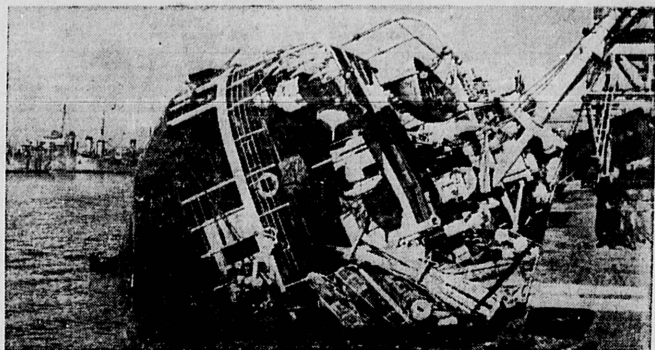
OPA Kills Deal
Several members wrote the chamber, offering to pay up to \$120 per month for a furnished five-room house. What's more, the chamber immediately got a dozen or more offers from home owners offering to move out for the session and get the fancy rent.

One deal was made for \$100 per month rent, complete with fireplace and baby grand piano. But the Office of Price Administration heard about it, sent out an investigator and found the price should have been closer to \$60. That killed the deal and the legislator is still looking.

Incur Deficits
Arthur Ohmhus, veteran chief clerk of the assembly, recalls the days 20 years ago when he paid \$5 a week for a hotel room and 25 cents for a good steak dinner. Now a lawmaker is lucky to get a hotel room for \$75 per month and it costs him \$3 or more per day to eat out, which is doubled if his wife or family is along.

Members are paid at the rate of \$12 per day for 100 consecutive days, which represents their entire salary for the year. During the off-years, their pay comes at the rate of \$100 per month. Without the greatest economy, a legislator is likely to go in the hole, at the same time losing contact with his regular business and having the usual expenses of keeping up a home away from Sacramento. There isn't any particular answer to the problem.

SPECIAL SERVICES
Rev. Harry Wilson Baker, New Jersey evangelist, is conducting special services at the Welteria Assembly of God church on Ward st. Meetings are held every night, starting at 7:30 o'clock.



AXIS VICTIM AT CASABLANCA DOCKS—Landing operations in North Africa were not as simple as some reports would indicate. Damage was heavy, as evidenced by the plight of this Italian merchant ship, blasted at its mooring in Casablanca harbor by U. S. warships.

Vegetables For Victory

This is third of a series of weekly bulletins offering practical suggestions for production for Victory gardening for the Los Angeles City Schools.

POINTERS FOR YOUR VICTORY GARDEN

It is suggested that you do not plant tomatoes, beans, corn, and cucumbers until the danger of frost is past and the soil is becoming warm. These vegetables require a well-drained soil condition. There is a variation each year in the planting time of your garden due to temperature, rain, and sunshine.

This makes gardening challenging from the very start. The amateur gardener usually loses a large percentage of his seed by planting too early.

Use your good judgment before following some of the growing suggestions that come to you from your neighbors or friends. Remember that your gardening condition may be entirely different from those of your neighbors. Someone will tell you to put incinerator ashes on your garden. Make a survey of the materials burned in your incinerator in the last week. Then ask yourself what chance your Victory garden would have under these conditions.

Don't Starve Plants

Buy the best of seeds, study the recommended varieties, and plant only those you feel are adapted to your family needs. If your family will not eat chard, do not try to convert them to its nutrition value by planting one hundred feet of it.

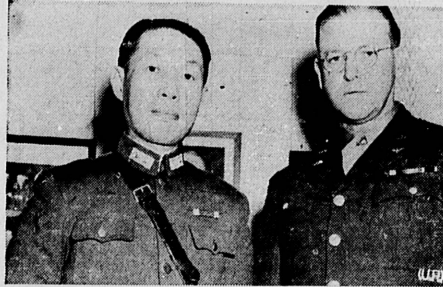
In buying vegetable plants, select the stocky and well-rooted plants which are free from disease and insects, plants which have only been transplanted once. Keep them growing by adding a very light application of commercial fertilizer of 3 per cent nitrogen, 3 per cent phosphorus, and 7 per cent potash. A starved and anemic plant is most susceptible to plant diseases and insects.

(NEXT WEEK—"Why You Can't Beat Beans—the Queen of All Vegetables.")

Motor Vehicles Total More Than Three Million

California had a total of 3,080,444 registered motor vehicles at the close of 1942, of which 1,042,152, the state department motor vehicles announced today.

Ally Views War Production



Liaison officer Gen. Shun Kei Hsiung, head of the Chinese Military Mission to the U. S., visits the General Electric and American Locomotive plants at Schenectady, N. Y. He is welcomed by Major Paul H. Downing, of the U. S. Air Forces. In predicting a United Nations victory, General Hsiung said that China urgently needs American heavy weapons.

About three-fourths of all sports equipment now being manufactured goes to members of the armed services and to those receiving pre-induction military training.

More than half of Morocco's export trade and 70 per cent of its imports pass through the port of Casablanca.

Japanese residents of Brazil total about 180,000.

COMPLETE EXAMINATION FLUOROSCOPIC X-RAY \$2

Consultation: History, symptoms, blood pressure, pulse rate and respiratory readings.

Complete physical and X-ray Fluoroscopic examination with special attention to chest, heart and lungs, abdomen, liver, gall bladder, spinal column and extremities. Examination of nose, throat and ears, including transillumination of the accessory nasal sinuses.

Special examination of the pelvic organs if indicated.

Summation and diagnosis with explanation of the findings of the examination.

Consultation and advice as to treatment.

The co-related findings of this examination are helping people every day to find the way to good health. Only by successful discovery of the cause of ill health, may the means of recovery be found.

DR. WM. F. HENRY, D.C.

AND STAFF

1323 Sartori Ave., Torrance, Calif.

PHONE TORRANCE 482

OPEN EVENINGS

MONDAY, WEDNESDAY AND FRIDAY

IN COMPTON

1335 E. Compton Blvd., Phone NEwmark-1-2466

ROBERTS LIQUOR STORES

SARTORI AT EL PRADO TORRANCE

SPECIALS FOR THIS WEEK-END!

OLD AMERICAN Straight Bourbon Whiskey . . . Qt. \$2.89 - Pt. \$1.50	ROYAL CLUB Imported 10-Year-Old Straight Bourbon Whiskey . . . Fifth \$4.64 - Pt. \$2.92
FLEISCHMANN'S 100 Proof, Bottled-In-Bond, 4-Year-Old Kentucky Straight Bourbon Whiskey . . . Qt. \$4.09 - Pt. \$2.14	T. W. SAMUELS' Kentucky Straight Bourbon Whiskey, Established 1844 . . . Qt. \$3.56 - Pt. \$1.82
MAYFLOWER 4-Year-Old Straight Bourbon Whiskey—Mild, Mellow, Matured . . . Qt. \$2.45 - Pt. \$1.27	CAL-SEC CHAMPAGNE Pink or White . . . Fifth \$1.41
GLENMORE "Silver Label" Kentucky Straight Bourbon Whiskey, 90 Proof . . . Qt. \$3.25 - Pt. \$1.63	SILVER FOX BEER A Deluxe Eastern Beer of Superb Flavor . . . Full Qt. 25c Plus 5c Bottle Deposit

DON'T FORGET OUR NEW STORE HOURS
10 a. m. to 8 p. m. DAILY
Open Sundays and Holidays

There's a Shortage of Doctors and Nurses!



DON'TS While Doc's Away:

With 40,000 doctors gone to war . . . with home-front doctors carrying on under the strain of extra patients and longer hours . . . you owe it to them—and to Uncle Sam—to ease the load as much as you can! Follow these rules, while your doctor's away . . .

1. Don't engage your doctor in long telephone conversations!
2. Don't ask him to come at once, unless it's a real emergency!
3. Don't wait 'til night to call him to see a patient who has been sick all day!
4. Don't make your doctor spend time collecting accounts!
5. Don't ask to see your doctor right away, because you have another engagement!
6. Keep yourself well!

BEACON DRUG CO.

LESLIE L. PRINCE, Prop.

CABRILLO AT GRAMERCY—TORRANCE PHONE 180

TRAVEL HEADQUARTERS IN TORRANCE

Firestone

MARCH Extra Values

COVERS ANY SURFACE WITH JUST 1 COAT
SALE 249 GAL.
REGULAR PRICE 2.79 GAL.

One Gallon Covers Walls of Average Size Room

- Easy to Use
- Washable Finish
- Flows Freely
- Use on Wallpaper, Plaster, Wallboard, Paint, Brick, etc.

Transform the interior of your home quickly, easily and economically with beautiful Firestone Wall-Tone. Available in 9 soft, pastel colors to meet your individual taste.

HOUSE CLEANING NEEDS 59c

69c Broom 59c
79c Dust Mop .59c
Johnson's Glo-Coat .59c
Clothes Line .59c
69c Forked Duster .59c
Clothes and Furniture Brush .59c
79c Venetian Blind Brush .59c
69c Bowl Brush .59c

FREE PACKAGE OF ZINNIA SEEDS

REGULAR PRICE 25c

SPECIALLY BUILT FOR WAR-TIME DRIVING

LIBERAL ALLOWANCE FOR YOUR OLD BATTERY

Takes extra high charging rate. Heavier plates increase life of battery.

2-YEAR Guarantee—Free Recharging If Necessary
Should any Firestone Perma-Life Battery require recharging during the first 24 months after date of purchase, it will be recharged by the seller, without cost to the owner.

MARCH 31 DEADLINE FOR TIRE INSPECTION AVOID THE RUSH

We're OFFICIAL GOVERNMENT INSPECTION STATION

INSPECTION TAKES ONLY A FEW MINUTES

WE WILL CERTIFY YOUR GOVERNMENT INSPECTION FORM

SAVE TIRES AND GAS • MAIL OR PHONE YOUR ORDER
TRANSPORTATION CHARGES PREPAID ON ORDERS OF \$2.00 OR MORE

Listen to the Voice of Firestone with Richard Crads, Moderator
Speaks and Alfred Wallstein, Monday evenings, over N. B. C.

Firestone STORES

MARCELINA AT CRAVENS—TORRANCE PHONE 476