

There's Lots of Music in Air



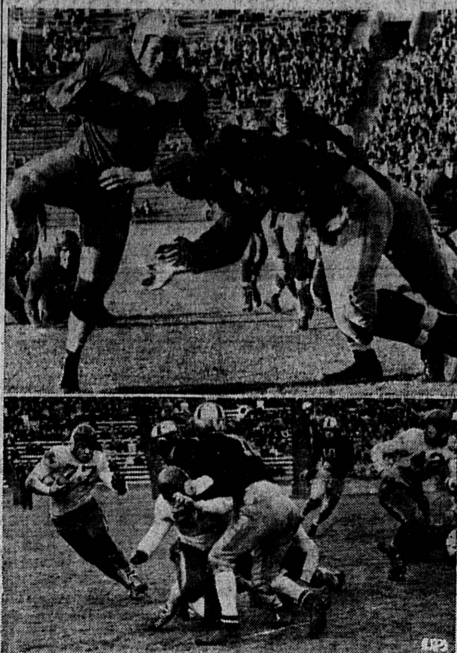
Three pretty coloratura sopranos fill the air with music, in sight as well as sound, while preparing for opening of civic light opera in San Francisco. "It's the Christmas spirit," they say. From left: Jane Marie Roberts, Patricia Borfield and Victoria Duane.

First Trojan Editor Returns



First editor of the U. S. O. student newspaper, Frank N. Lapham, returns to the campus after 51 years, as a preview visit to homecoming for 30,000 alumni from Dec. 3 to 6. He is seen in the Daily Trojan slot with editor Myron Minnick and reporter Virginia Ellis. "Booeps were scarce in those days, for I only had 55 students for news instead of 17,000," said Lapham.

Football Fare on Pacific Coast



In top photo, Victor Smith (32), UCLA halfback, gains on end run but is about to be tackled by Jack Matthews (35), right halfback for Santa Clara, in Los Angeles game won by Santa Clara, 31-13. In lower picture, Tommy Roblin (77) is shown in action at Seattle, where he sparked Oregon to 19-16 victory, which eliminated Washington from Rose Bowl race.

Three Die When Train Hits Auto In N. Wilmington

Three Japanese, all well-known in this community, were victims of a tragic accident last night in North Wilmington. After striking a small coupe broadside, killing Mitsuo Tozawa, 40, and Kiyoshi Yamashita, 7, and fatally injuring Fusako Yamashita, 9, a Pacific Electric car careened off the rails for 300 feet, smashed a telegraph pole but miraculously failed to injure seriously anyone in the car. About 30 passengers were shaken up but none suffered more than fright and skinned shins, it was reported. The crash occurred at Alameda Blvd., and Carson st. The P. E. car was southbound for San Pedro.

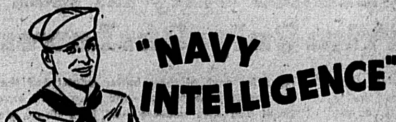
Holiday Crashes Near City Injure Five Persons

William Schuchman, 24, and John Acord, 25, both of 1534 Marcelina ave. were treated for cuts about their bodies and faces Nov. 20 at San Pedro. They were injured when their auto collided with an oil tank truck at Vermont and Rosecrans, according to Los Angeles police reports. Injured in an accident the same holiday at 173rd and Broadway sts., were Clair Nelson, 31, Compton; Forrest Francis, 23, Long Beach, and Mrs. G. W. Berry, 48, of Alhambra. Nelson, who suffered possible internal injuries, was given emergency treatment at Torrance and transferred to Compton hospital; Francis was treated for lacerations about the face and sent home; dirt particles were removed from Mrs. Berry's eye, after which she was released.

COUNCIL MEETS DEC 2
The next city council meeting will be an adjourned session Tuesday night, Dec. 2, starting at 7:45 o'clock.

The crossing, one end several feet higher than the other. The car was operated by F. H. Miller, motorman, and J. E. Henson, conductor.

One of the most popular hobbies of navy sailors is that of collecting "covers" from the battleships that maintain their own postoffices.



"NAVY INTELLIGENCE"

What happens if a sailor in the U. S. Navy gets sick?

There is a dispensary at every station manned by Medical Officers who give complete and efficient aid to anyone who is feeling ill.

Is there any insurance available to sailors in the United States Navy?

Yes Government insurance policies up to \$10,000 are available to enlisted men.

How does the U. S. Navy and the Naval Reserve decide what type of work a recruit is best fitted for?

Before being assigned to duties, recruits are given the O'Rourke Classification test which reveals their individual talents.

Who are the Staff Officers in the U. S. Navy?

There are four staff officer corps in the Navy. They are: Medical Officers, Dental Officers, Supply Officers and Chaplains.

Is there such a thing as 'shore duty in the Navy?

Yes, but in most instances men are not assigned to shore duty unless they have been in the Service for six (6) years.

What is the "Medal of Honor" that is given to sailors in the U. S. Navy?

It is the highest individual award an enlisted man can receive. It is awarded by the President of the United States to the man who, in action involving actual conflict with the enemy, distinguishes himself conspicuously by gallantry and intrepidity at the risk of his own life.

If I have some specialized training must I serve as an apprentice seaman if I enlist in the U. S. Naval Reserve?

No. Any man with previous specialized training will be enlisted in a Special Naval Reserve Class and will receive petty officer's rating and pay.

Do seamen in the U. S. Naval Reserve receive the same pay as the seamen in the regular Navy?

Yes, the men in the Naval Reserve receive the same pay, food, entertainment, free medical and dental care, have the same opportunities for advancement and for training in skilled jobs as the seamen in the regular Navy.

Does the sailor in the U. S. Naval Reserve wear a different uniform from that worn by regular Navy sailors?

No, there is no difference in the uniform worn by the Naval Reservists and that worn by the regular Navy seamen.

What are P. T. boats?

P. T. designates the new type motor torpedo boats built in three experimental sizes, 59 feet, 81 feet, and 110 feet. These boats are capable of speeds in excess of 50 miles per hour and carry two or more torpedo tubes, depth charges, smoke-screen apparatus, and rapid fire anti-aircraft guns. These boats have not yet been incorporated into the fighting fleet in any great number.

What are P. T. boats?

P. T. designates the new type motor torpedo boats built in three experimental sizes, 59 feet, 81 feet, and 110 feet. These boats are capable of speeds in excess of 50 miles per hour and carry two or more torpedo tubes, depth charges, smoke-screen apparatus, and rapid fire anti-aircraft guns. These boats have not yet been incorporated into the fighting fleet in any great number.

What are P. T. boats?

P. T. designates the new type motor torpedo boats built in three experimental sizes, 59 feet, 81 feet, and 110 feet. These boats are capable of speeds in excess of 50 miles per hour and carry two or more torpedo tubes, depth charges, smoke-screen apparatus, and rapid fire anti-aircraft guns. These boats have not yet been incorporated into the fighting fleet in any great number.

What are P. T. boats?

P. T. designates the new type motor torpedo boats built in three experimental sizes, 59 feet, 81 feet, and 110 feet. These boats are capable of speeds in excess of 50 miles per hour and carry two or more torpedo tubes, depth charges, smoke-screen apparatus, and rapid fire anti-aircraft guns. These boats have not yet been incorporated into the fighting fleet in any great number.

What are P. T. boats?

P. T. designates the new type motor torpedo boats built in three experimental sizes, 59 feet, 81 feet, and 110 feet. These boats are capable of speeds in excess of 50 miles per hour and carry two or more torpedo tubes, depth charges, smoke-screen apparatus, and rapid fire anti-aircraft guns. These boats have not yet been incorporated into the fighting fleet in any great number.

What are P. T. boats?

P. T. designates the new type motor torpedo boats built in three experimental sizes, 59 feet, 81 feet, and 110 feet. These boats are capable of speeds in excess of 50 miles per hour and carry two or more torpedo tubes, depth charges, smoke-screen apparatus, and rapid fire anti-aircraft guns. These boats have not yet been incorporated into the fighting fleet in any great number.

What are P. T. boats?

P. T. designates the new type motor torpedo boats built in three experimental sizes, 59 feet, 81 feet, and 110 feet. These boats are capable of speeds in excess of 50 miles per hour and carry two or more torpedo tubes, depth charges, smoke-screen apparatus, and rapid fire anti-aircraft guns. These boats have not yet been incorporated into the fighting fleet in any great number.

What are P. T. boats?

P. T. designates the new type motor torpedo boats built in three experimental sizes, 59 feet, 81 feet, and 110 feet. These boats are capable of speeds in excess of 50 miles per hour and carry two or more torpedo tubes, depth charges, smoke-screen apparatus, and rapid fire anti-aircraft guns. These boats have not yet been incorporated into the fighting fleet in any great number.

What are P. T. boats?

P. T. designates the new type motor torpedo boats built in three experimental sizes, 59 feet, 81 feet, and 110 feet. These boats are capable of speeds in excess of 50 miles per hour and carry two or more torpedo tubes, depth charges, smoke-screen apparatus, and rapid fire anti-aircraft guns. These boats have not yet been incorporated into the fighting fleet in any great number.

What are P. T. boats?

P. T. designates the new type motor torpedo boats built in three experimental sizes, 59 feet, 81 feet, and 110 feet. These boats are capable of speeds in excess of 50 miles per hour and carry two or more torpedo tubes, depth charges, smoke-screen apparatus, and rapid fire anti-aircraft guns. These boats have not yet been incorporated into the fighting fleet in any great number.

What are P. T. boats?

P. T. designates the new type motor torpedo boats built in three experimental sizes, 59 feet, 81 feet, and 110 feet. These boats are capable of speeds in excess of 50 miles per hour and carry two or more torpedo tubes, depth charges, smoke-screen apparatus, and rapid fire anti-aircraft guns. These boats have not yet been incorporated into the fighting fleet in any great number.

What are P. T. boats?

P. T. designates the new type motor torpedo boats built in three experimental sizes, 59 feet, 81 feet, and 110 feet. These boats are capable of speeds in excess of 50 miles per hour and carry two or more torpedo tubes, depth charges, smoke-screen apparatus, and rapid fire anti-aircraft guns. These boats have not yet been incorporated into the fighting fleet in any great number.

What are P. T. boats?

P. T. designates the new type motor torpedo boats built in three experimental sizes, 59 feet, 81 feet, and 110 feet. These boats are capable of speeds in excess of 50 miles per hour and carry two or more torpedo tubes, depth charges, smoke-screen apparatus, and rapid fire anti-aircraft guns. These boats have not yet been incorporated into the fighting fleet in any great number.

What are P. T. boats?

P. T. designates the new type motor torpedo boats built in three experimental sizes, 59 feet, 81 feet, and 110 feet. These boats are capable of speeds in excess of 50 miles per hour and carry two or more torpedo tubes, depth charges, smoke-screen apparatus, and rapid fire anti-aircraft guns. These boats have not yet been incorporated into the fighting fleet in any great number.

CALIFORNIA SPEAKS!

Significant Statements by Interesting Californians

DEANNA DURBIN, discussing beauty secrets—"First of all, my appearance is a reflection of my feelings. I'm 19—in love—happily married."

ALEXANDER SCORUCOV, Soviet consul general at S. F.—"We Russians are not optimistic. We are not pessimistic. We are simply sure we are going to beat the Germans."

DR. WM. E. HEERMS, Univ. of Calif.—"The people of the United States are now supporting more

LOCAL U. S. O. TOTAL

Collections totalling \$74.47 were made in Torrance theatres during the recent 1941 U. S. O. Motion Picture Theatres Drive, according to an announcement received by The Herald this week from the U. S. O.'s national campaign division.

The average soldier uses 18 times more wool than the rank and file of civilians.

more than 250,000,000 rats at an annual cost of from 50 cents to \$2 per rat."

REAR ADMIRAL CHARLES A. BLAKELY, in command at San Diego—"I fully intend to see that certain San Diego labor leaders do not bludgeon the United States Navy!"

LIFE-TIME CAREER
During the past two decades, service in the United States Navy has been regarded as a career in itself. More and more men each year are making it a lifetime vocation probably due to the fact that, after retiring, an ex-Service man gets his retirement pay regardless of any wages or income he may acquire in private life after he leaves the Navy.

50 Beautiful CHRISTMAS CARDS
Your choice of 12 Smart Designs
PRINTED WITH YOUR NAME

50 CARDS and 50 ENVELOPES . . . \$1.00

ORDER NOW!

TORRANCE HERALD
1336 EL PRADO TORRANCE

HEAR HOWARD SCOTT
"Technocracy's Offensive"
SHRINE AUDITORIUM
Los Angeles
Thursday, Dec. 4, 8 p.m.
Admission 40c, including tax



Home for the holidays . . . There is no finer gift for your loved ones than to visit them at this season—take the trip you have promised them and yourself for years. Santa Fe streamliners and limiteds are on schedules to suit your convenience and fares will fit your budget. If you can't get away, bring them to visit you. Santa Fe will make all arrangements locally to furnish cash and tickets at nearly any point in United States. * Be sure to include one or more of America's scenic wonders in the journey—Grand Canyon, Carlsbad Caverns, the Indian Country and many others.

FOR PICTURE FOLDERS, INFORMATION, RESERVATIONS, CALL SANTA FE TICKET OFFICE.

* **SHIP VIA SANTA FE**—Be assured of fast, modern freight schedules, with the highest standards of efficiency in every shipping detail—Ask your Santa Fe Railway Agent.

* **THE SANTA FE RAILWAY IS A CALIFORNIA INSTITUTION**

* **APPLY NOW FOR TRAINING AS A U. S. ARMY AVIATION CADET—KEEP 'EM FLYING.**

Taxpayers Must Decide Course of State Finances

State Controller Harry B. Riley today said that California taxpayers soon will have an opportunity to decide whether they wish state taxes reduced or a surplus built as a protection against possible future hard times.

Quoting figures to show that the state is in the best financial condition since 1938, Controller Riley said that the existing deficit probably will be completely wiped out within a few months and a surplus of revenue over expenditures then will exist.

"The taxpayers of the state thru their representatives in the Legislature then will have an opportunity to decide whether they want their taxes cut or whether a cushion of money should be accumulated for the future," Riley said.

The Controller reported that the state took in \$40,334,110 more than it spent in the four-month period ended Oct. 31. Revenue in that period was 40% higher than in the corresponding period last year and expenditures were nearly 20% less.

As a result, the general fund cash deficiency was cut to \$24,031,333 on Oct. 31, a reduction of \$47,949,656 below the Oct. 31, 1940, deficiency. The favorable trend in state finances has resulted largely from unprecedented sales tax returns and the elimination of the state's unemployment relief program, Riley said.

WINS MINK AWARDS

Five of the six trophy cups awarded in the mink section of the California Fur Breeders' Association show at Inglewood last weekend went to F. V. Colwell, operator of a mink farm of 1,700 animals at 22010 Moneta ave., in North Torrance.

POPULAR GAME

The most popular game in the United States Navy is "accidence," pronounced accy-dency, a modified form of backgammon. Tournaments are often held and prizes awarded to the winners.

MODEL MEN

The sailors in Uncle Sam's Navy are sometimes called the "best behaved" sailors in the world. In 1939, more than one-third of the men enrolled in the Navy were awarded the good conduct medal.

Pick Out One of These . . .

MODERN HOMES

Now being Built!

DELUXE 5 AND 6 ROOM ULTRA MODERN STUCCO HOMES

DOWN PAYMENT AS LOW AS \$275.00

Buy Now Before Construction Costs Advance!

BALANCE EASY TERMS

LARGE LOTS
PAVED STREETS
SIDEWALKS — CURBS

CLOSE TO
BUS LINES - CHURCHES - SCHOOLS
AND SHOPPING CENTER

See These Beautiful Homes Today!

Located at Western Avenue and 149th Street, Gardena. Representative on Tract For Your Convenience.

MONARCH CONSTRUCTION COMPANY

CONTRACTORS AND BUILDERS

MAIN OFFICE: 2068 W. Manchester Phone THornwall 4121