

Rest Homes 71 Homes For Sale 84 Money to Loan 92 Money to Loan 92

Guest Home FOR THE AGED NOW IN THEIR NEW HOME, LARGER AND BETTER ACCOMMODATIONS. LARGE CLEAN AIRY SUNNY ROOMS AND THE GUESTS ENJOY A COMFORTABLE LIVING ROOM OF THEIR OWN, WITH RADIO. DIETS IF NECESSARY. GOOD FOOD. "NO RULES AND REGULATIONS" JUST LIKE BEING IN YOUR OWN HOME. WE WELCOME YOUR INSPECTION. ELIZABETH SWATON 1874 261st St. Tor. 920 3 Blocks So. of Hwy 101

Apartment, Flats 12 \$30 To \$70 doubles, singles. All utilities furnished. Redecorated. Free Parking. Heat Apts. 1321 El Prado. CARSON APARTMENTS - 2 and 3 room furnished apts. Cheap rent. 1728 Abalone. FOR RENT furnished 3-room apartment in court. 1504 Mar. 114 Highway, Lot 1. "OUR RENT" Newly furnished apartments by week or month. Utilities paid. Kirkby Apts. 1642 1/2 E. Western. SINGLE modern, furnished apartment. Clean. Reasonable. 110 North Branta, Redondo Beach.

EMERSON APTS. SUNNY OUTSIDE APTS. MINIMUM LIGHTS AND GAS. REFRIGERATION. CLOSE IN. 1417 1/2 MARCELINE Ave. 975. UNFURNISHED apartment, 4 rooms, newly decorated, tile, 234 Arcade Bldg., 141 S. Pacific, Redondo.

Houses, Courts 78 \$13 to \$16—Two and three room furnished bungalows. Hot and cold water. Electricity. El Prado Court, 1100 El Prado. Acreage, Lots 80 FARMS - RANGES \$10.00 DOWN \$100.00 buys large residence lot. All utilities in. Small homes permitted. See owner at 20220 So. Normandie, El Prado. ACRE ON 101 Highway Lomita, sale or exchange. M. E. Smith, Exclusive Sales Broker, 1828 1/2 Highway, Lomita.

Homes For Sale 84 3-ROOM HOUSE, GARAGE. LOT 100x150. WATER. See PER 1000 CH. 17. \$2,000 - EASY TERMS. LOTS FROM \$250 UP. LISTINGS WANTED.

GOOD LUCK REALTY 25590 WESTERN AVE. HARBOR CITY. 5-ROOM FRAME RESIDENCE ON ANDREWS AVE. GOOD CONDITION, NEW ROOF. \$2800 - \$3000 DOWN. 2-BEDROOM FRAME RESIDENCE IN COUNTRY. \$2100 - \$3000 DOWN. 5-ROOM FRAME HOUSE WITH EXTRA SLEEPING QUARTERS, CHICKEN EQUIPMENT, APPROX. 3.5 ACRE HOUSE & YRKS OLD IN GOOD CONDITION. \$2500-REASONABLE TERMS. WE HAVE BUYERS WAITING FOR GOOD PROPERTIES. LIST YOUR HOME WITH US.

REMCO 1405 SARTORI TOR. 5 5-ROOM STUCCO, NEWLY RECONDITIONED, LARGE ROOMS, CHOICE LOCATION ON ACACIA. \$4200. 4-ROOM FRAME ON SONOMA, LARGE LOT 78350. 5-ROOM FRAME ON CEDAR, LOT 90x150. \$3750.

Buxton 1840 TORRANCE BLVD. PHONE 172 1417 COTA AVE. Will be shown only by appointment. Bank appraised \$1700. Cannot be replaced for \$5000. Beautiful 3-bedroom stucco, large living room, dining room, breakfast room, kitchen, fireplace, built-in real fireplace, floor furnace, garage. Loan \$2750 payable \$28.00 month. Will consider any reasonable cash offer subject to loan. Call or write Kretschmer, 6746 California Ave., Long Beach, Phone 415-24 or 251-48. Will exchange.

BUY A GOOD 4-ROOM HOUSE. NEEDS SOME FIXING. \$600 CASH. Myrtle O. Brown REAL ESTATE 1821 1/2 Hwy 101 Lom. 100 WILL PAY CASH for equity in workingman's home. Consider any old home. 1402 West 24th Street, Wilmington 1877.

7-ROOM, 3-BEDROOM MODERN STUCCO HOME, HARDWOOD FLOOR, NEWLY DECORATED. 2-CAR GARAGE. NEAR SCHOOL. 21615 DOLORRES. SEE OWNER, 407 E. CARSON ST.

4,000 BUYS 7-ROOM, 3-BEDROOM MODERN STUCCO HOME, HARDWOOD FLOOR, NEWLY DECORATED. 2-CAR GARAGE. NEAR SCHOOL. 21615 DOLORRES. SEE OWNER, 407 E. CARSON ST.

FRAME HOUSE, 5 rooms and breakfast room. Corner lot Good sized service porch, real fireplace. Terms. \$4,250.00. Inquire 7 Lomita News.

TORRANCE INVESTMENT CO. 1409 Sartori Ave., Phone 176 HERE'S YOUR CHANCE TO LIVE IN Hollywood Riviera A REAL ESTATE HOME, DOUBLE GARAGE, NICELY LANDSCAPED, REMARKABLY PRICED. TERMS. SEE MR. SVILAS.

O. C. Boyce Realty 25316 Bellepointe, Harbor City

WESTERN VILLAGE 1612 W. Carson St. TORRANCE, CALIFORNIA

The Fastest Growing Community in the Harbor District 2 and 3-bedroom homes in all stages of construction. We Invite You to Inspect Them

GENE HAMILTON Phone 534 or 1489

Income Property 85 APARTMENT BUILDING for sale, consisting of 10 singles and 2 bachelor apartments, fully equipped, carpeted, nicely furnished. Nice laundry room, walking distance to stores and industrial plants. Terms can be arranged. Full house, good income. For interview write Box 2, Torrance Herald.

HYPERS, SELLERS, BORROWERS, LENDERS, IMPORTANT NOTICE! SECTION 3440 of the California Civil Code presumes all sales of chattel mortgages of businesses to be FRAUDULENT and all buyers or lenders to be liable for the debts of sellers or borrowers in event of failure to record and publish Notice of Intention to Sell or Borrow, as required by the strict Rules of Sales Law of this State. For copy of the law, further information and blank forms, inquire Torrance Herald, 1836 El Prado

FOR SALE apartment lease, 35 apartments, 3-year furnished lease. Nets \$200 per month and apartment for owner. Main down town location. Phone owner, Long Beach 674-364 or 68-178.

Business OPPORTUNITIES 90 \$250 WILL BUY A GOOD \$500 CAFE IN TORRANCE. Nicely located and fully equipped, sickness compels sale. Craven 353 E. 3rd St., Long Beach.

ESTABLISHED beauty shop in Torrance for sale. Modern equipment. Good patronage. Cash or terms. Phone Lomita

FOR SALE good fountain lunch business for cash. Box 7, Torrance Herald

Automobiles TRUCKS, TRAILERS, MOTORCYCLES AND PARTS 2000 USED TIRES, 50 GOOD USED CARS, TRUCKS, TRAILERS. CLOSING OUT AT YOUR TERMS. NO FINANCE OR INSURANCE CHARGE. WE TRADE. UNCLE PETE'S 16813 S. Western Menlo 4-2214

Bill's AUTO WRECKING "IF IT'S PARTS, SEE BILL" 1309 Lomita Blvd., Harbor City Phone Lomita 393

Want Ads in our papers cover Torrance, Lomita, Harbor City, Welteria, Keystone and parts of Gardena and the Shoe String strip.

Solo-Personal Property (Operating Under Personal Property Brokers Act) CASH LOANS WITHOUT ENDORSERS Why pay more than Consumers charge on a loan for cash or refinancing? To enable you to budget Winter expenses, Consumers offers you its rate of 2 1/2% per month on balances of \$100.00 or less and 2% on remainders in excess of \$100.00. 3 WAYS TO GET A CONSUMERS CASH LOAN PHONE - WRITE - COME IN Compare these rates with those offered elsewhere

Table with 2 columns: Total amount you need, Monthly payments to you. Rows include 6 mos, 12 mos, 18 mos, 24 mos, 30 mos, 36 mos, 48 mos, 60 mos.

3 LOAN PLANS NO. 1 - INCOME LOANS Secured only by your income and ability to repay. No co-signer. NO. 2 - FURNITURE LOANS Your character is more important than the furniture itself. You can depend on fair treatment in case of illness or unemployment. NO. 3 - AUTO LOANS \$50. to \$750.00 cash loans and refinancing. Foremost specialists in this type of loan.

CONSUMERS CREDIT 1100 American Avenue, LONG BEACH Phone: 7-2741

Automobiles TRUCKS, TRAILERS, MOTORCYCLES AND PARTS 37 OLDS Sedan, A-1 condition. Will take trade; also Austin coupe, cheap. 1812 Arlington, Torrance.

We Need Used Cars and How! SEE US NOW FOR BEST TRADE ALLOWANCES

SEE THE NEW 1942 CHEVROLET IMMEDIATE DELIVERY!!! OR IF YOU ARE GOING TO DRIVE YOUR PRESENT CAR LET US CHECK IT OVER - WE ARE FULLY EQUIPPED TO DO FENDER AND BODY WORK, PAINTING AND GENERAL REPAIRING OF ALL MAKES OF GENERAL MOTORS CARS. WORK GUARANTEED

WILCOX, CHEVROLET Co. YOUR TORRANCE CHEVROLET DEALER 1609 CABRILLO PHONES 1478 - 1479 TORRANCE

SAVE MONEY! Wash Job AND Lubrication Both for \$1.75 HEDGES' RICHFIELD SERVICE 1824 CARSON TOR. 797

Torrance Auto Wrecking and Auto Parts GLASS INSTALLED WE HAVE A FULL LINE OF AUTO PARTS FOR ALL MAKES OF CARS. WRECKED, BURNED OR RUNNING. FRANK-IN CHARGE MACK BROWN-PROP. 1001 TORRANCE BLVD. TORRANCE 1476

Auto Repairing 97 AUTO TOPS AND UPHOLSTERING SEATS BUILT IN CLUB COUPES. NO OVERHEAD CHARGE. CHAS. F. COX 2155 240th St. Lom. 508

Easy Terms WALTER G. LINCH DODGE-PLYMOUTH AGENCY ESTABLISHED 1922 277 So. Pacific Redondo Beach - REDONDO 2128

Auto Accessories 96 2000 USED TIRES, 50 GOOD USED CARS, TRUCKS, TRAILERS. CLOSING OUT AT YOUR TERMS. NO FINANCE OR INSURANCE CHARGE. WE TRADE. UNCLE PETE'S 16813 S. Western Menlo 4-2214

Rent that Room Garage House Apartment thru our Want Ad Torrance 444

"NAVY INTELLIGENCE" Is it necessary to be a high school graduate in order to enlist in the Navy? No. Navy enlistees need not be high school graduates. All applicants will be given an examination containing approximately 100 questions. A grade of 50 per cent or better on this examination is sufficiently high to pass the Navy educational standards. However, a high school education will be valuable to the seaman during his Navy enlistment.

After I have served my term of enlistment, what benefits do I get for re-enlistment? Depending on your rate and length of service, you can get a cash bonus up to \$500 plus 30 days leave with pay.

What does the term "cash cans" mean in the Navy? An "ash can" is a slang term applied to the depth charge used to combat submarines. The average "ash can" is a container filled with approximately 200 pounds of T.N.T. and can be dropped overboard from a ship and so controlled as to explode at depths ranging from 36 to 300 feet. These cash cans are carried by the fast ships in the fleet, as a boat dropping a charge regulated to explode at 70 feet depth must move away from the explosion area at a speed of 25 knots or more. These "ash cans" are either rolled off the stern or shot from "y-guns" which hurl one right and one left simultaneously.

What is the greatest possible pay I can expect to earn during my first term of enlistment? It is possible to earn as much as

After I have served my term of enlistment, what benefits do I get for re-enlistment? Depending on your rate and length of service, you can get a cash bonus up to \$500 plus 30 days leave with pay.

What does the term "cash cans" mean in the Navy? An "ash can" is a slang term applied to the depth charge used to combat submarines. The average "ash can" is a container filled with approximately 200 pounds of T.N.T. and can be dropped overboard from a ship and so controlled as to explode at depths ranging from 36 to 300 feet. These cash cans are carried by the fast ships in the fleet, as a boat dropping a charge regulated to explode at 70 feet depth must move away from the explosion area at a speed of 25 knots or more. These "ash cans" are either rolled off the stern or shot from "y-guns" which hurl one right and one left simultaneously.

What is the greatest possible pay I can expect to earn during my first term of enlistment? It is possible to earn as much as

After I have served my term of enlistment, what benefits do I get for re-enlistment? Depending on your rate and length of service, you can get a cash bonus up to \$500 plus 30 days leave with pay.

What does the term "cash cans" mean in the Navy? An "ash can" is a slang term applied to the depth charge used to combat submarines. The average "ash can" is a container filled with approximately 200 pounds of T.N.T. and can be dropped overboard from a ship and so controlled as to explode at depths ranging from 36 to 300 feet. These cash cans are carried by the fast ships in the fleet, as a boat dropping a charge regulated to explode at 70 feet depth must move away from the explosion area at a speed of 25 knots or more. These "ash cans" are either rolled off the stern or shot from "y-guns" which hurl one right and one left simultaneously.

What is the greatest possible pay I can expect to earn during my first term of enlistment? It is possible to earn as much as

After I have served my term of enlistment, what benefits do I get for re-enlistment? Depending on your rate and length of service, you can get a cash bonus up to \$500 plus 30 days leave with pay.

What does the term "cash cans" mean in the Navy? An "ash can" is a slang term applied to the depth charge used to combat submarines. The average "ash can" is a container filled with approximately 200 pounds of T.N.T. and can be dropped overboard from a ship and so controlled as to explode at depths ranging from 36 to 300 feet. These cash cans are carried by the fast ships in the fleet, as a boat dropping a charge regulated to explode at 70 feet depth must move away from the explosion area at a speed of 25 knots or more. These "ash cans" are either rolled off the stern or shot from "y-guns" which hurl one right and one left simultaneously.

What is the greatest possible pay I can expect to earn during my first term of enlistment? It is possible to earn as much as

After I have served my term of enlistment, what benefits do I get for re-enlistment? Depending on your rate and length of service, you can get a cash bonus up to \$500 plus 30 days leave with pay.

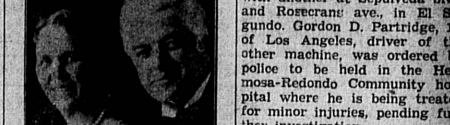
What does the term "cash cans" mean in the Navy? An "ash can" is a slang term applied to the depth charge used to combat submarines. The average "ash can" is a container filled with approximately 200 pounds of T.N.T. and can be dropped overboard from a ship and so controlled as to explode at depths ranging from 36 to 300 feet. These cash cans are carried by the fast ships in the fleet, as a boat dropping a charge regulated to explode at 70 feet depth must move away from the explosion area at a speed of 25 knots or more. These "ash cans" are either rolled off the stern or shot from "y-guns" which hurl one right and one left simultaneously.

What is the greatest possible pay I can expect to earn during my first term of enlistment? It is possible to earn as much as

After I have served my term of enlistment, what benefits do I get for re-enlistment? Depending on your rate and length of service, you can get a cash bonus up to \$500 plus 30 days leave with pay.

What does the term "cash cans" mean in the Navy? An "ash can" is a slang term applied to the depth charge used to combat submarines. The average "ash can" is a container filled with approximately 200 pounds of T.N.T. and can be dropped overboard from a ship and so controlled as to explode at depths ranging from 36 to 300 feet. These cash cans are carried by the fast ships in the fleet, as a boat dropping a charge regulated to explode at 70 feet depth must move away from the explosion area at a speed of 25 knots or more. These "ash cans" are either rolled off the stern or shot from "y-guns" which hurl one right and one left simultaneously.

Church Workers Will Entertain Youngsters Here



ME. and MRS. E. C. MILLS

Something new in church entertainments will be offered all boys and girls of this community at the First Baptist church, Carson and Martina, after school from next Monday thru Sunday afternoon when Prof. and Mrs. E. C. Mills will present "Mystery Hour" programs. Their novel entertainment combines character building with unusual mystery stunts that are certain to amaze youngsters, according to Rev. C. Miles Northrup, local pastor. He invites all children to this free show every afternoon next week.

Salvation Army Appeals for Bedding And Heaters Here

An urgent call is made upon the citizens of Torrance and vicinity for a supply of warm bedding, blankets, comforts, sheets, mattresses, bedspreads, and beds. The large supply of bedding held for the emergency has been exhausted through our relief stores," states Brigadier Sydney L. Cooke, officer in command of the South Bay district of the Salvation Army Social Service Department. "Large supplies are now needed badly to supply the great need of families, who apply for bedding. All bedding is sterilized and renovated and ready for use. We also need heaters of all descriptions, gas, wood, or coal. With the large number of families moving into Torrance our activities are increased, and the demand much greater than formerly. Our telephone number is 1893. Please drop us a card at 809 Plaza Ave."

The concrete poured to create the Dheprostroy dam would make a pavement an inch thick and a yard wide from New York to Omaha.

PINTLES AND GUDGEONS A pintle is a wood or metal peg on a rudder that fits into a hole on the rudder post of a boat which hole is known as a gudgeon.

The United States is the world's largest consumer of sponges.

Shop Early with the FULLER DEALER Christmas Gifts for all the Family Bob McDowell 1610 Cedar St., Torrance Phone 1875

Beautiful CHRISTMAS CARDS Your choice of 12 Smart Designs

PRINTED WITH YOUR NAME

50 CARDS and 50 ENVELOPES \$1.00

ORDER NOW! TORRANCE HERALD TORRANCE 1336 EL PRADO THE LOMITA NEWS TORRANCE 24702 NARBONNE AVENUE PHONE 84