

Lynwood Youth Wins Essay Award

A 14-year-old boy, James McClelland, ninth grade pupil in the Lynwood Junior high school, was awarded first prize in a state-wide contest for the best essay on Americanism.

About 6,000 essays were submitted in the contests sponsored by the Auxiliaries to the Veterans of Foreign Wars. Winners of the second and third places were Dorothy Kieferdorf, of San Francisco and Antoinette Gattuccio of Los Gatos.

The winning essays from each state will enter the national contest so a 14-year-old boy has a chance for the national championship, although many of the winners are several years older.

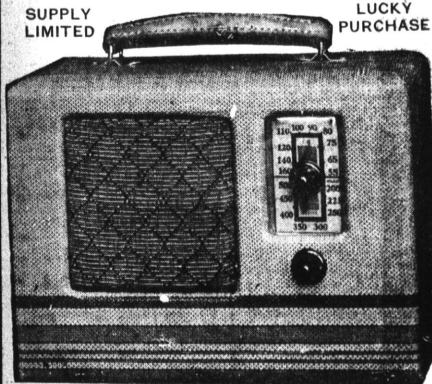
—Want Ads 25c—

TOM THUMB PORTABLE

ONLY \$9⁹⁵

SUPPLY LIMITED

LUCKY PURCHASE



5 REPLACES THE "A" BATTERY

Covered in handsome luggage linen, easy tuning dial and large clear speaker, this is the portable you've always wanted at an unheard of low price. Come in, see and hear this super radio value.

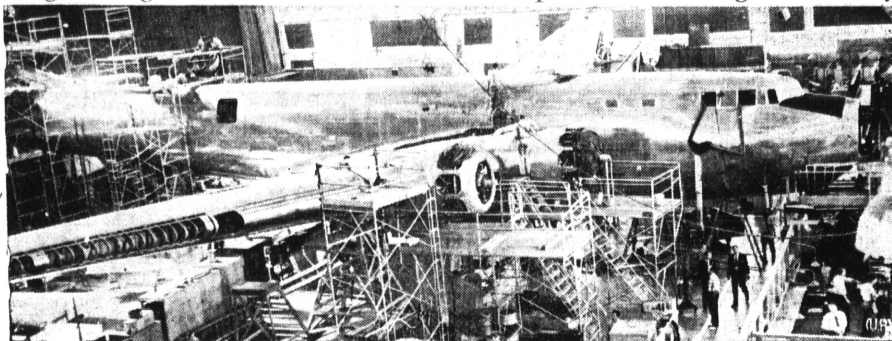
OWN TOM THUMB FOR 50¢ A WEEK

National Home Appliance Co.

HARRY M. ABRAMSON
1328 Sartori Ave.

"FRIENDLY CREDIT"
Phone 78

Huge Douglas B-19 Bomber Nears Completion at Douglas Factory



This is believed to be the world's largest bombing plane. Here it is unveiled for the first time for newspaper pictures taken in the Douglas factory in Santa Monica. The plane weighs 70 tons and is capable of flying 6000 miles without refueling.

Douglas Official Reveals Details of Huge New Plant in Long Beach

Details of the huge modern airplane plant which Douglas Aircraft Company will soon start building along the north side of the Long Beach Municipal Airport were revealed this week by George A. Strompl, factory manager of the concern. A survey of the property, acquired from the Montana Land Company, is under way preliminary to the construction of the foundation of the steel and concrete sawtooth structure with 150-foot bays.

The plant will be large enough for assembly of the DC-4, largest plane turned out by Douglas. The factory manager explained how personnel is obtained for its plants. Key men will head the personnel of the Long Beach factory as they do at Santa Monica and El Segundo. The company maintains a school in its Santa Monica plant where it trains its workers.

Douglas cooperates with the trade schools in Southland cities as well as state universities and places many graduates of high schools and junior colleges who have had shop training.

Use Conveyor Line
Modern airplane construction has reached the stage where production is handled as in automobile factories. The plane is assembled on a conveyor line. Men are trained for particular operations. Thus they do not have to have a complete engineering or mechanical knowledge in order to qualify for employment. Too, it was explained, the company is able to absorb young men with trade school training and readily

train them to fit into airplane methods.

The visiting official said the company will have more than 30 acres of buildings on the site north of the airport. From 60 to 100 acres of parking space will be acquired to accommodate the employees. The parking area will be east of Lakewood Boulevard and probably will be connected with the plant by means of tunnels under the boulevard.

Pedestrian Tunnels
Studies made by the company show, Strompl said, that four 30-foot pedestrian tunnels would be sufficient to empty the plant of 30,000 persons in 12 minutes. The parking area probably will have an offset from Lakewood Boulevard for the ingress and egress of buses.

Permanence of the plant is presaged by the vision of the future of the airplane industry held by Strompl. He predicts that refrigerated cargo planes will be delivering perishable foods from Southern California in New York and along the East Coast each morning in the near future. The war in Europe has indicated the possibilities of huge cargo air carriers, he said.

Douglas has built a good many cargo planes for the United States Army. The defense emergency may retard development of commercial cargo business but it is certain to leap ahead after the emergency has passed, Strompl concluded.

Vacation Season at L.A. City Campus is Extended to Sept. 14

Los Angeles family vacation lodges at Camp Seeley in the San Bernardino mountains and Camp High Sierra in the Sierra Nevada range will remain open this season until September 14. It was announced today by Superintendent George Hjelte of the City Playground and Recreation Department.

The camps will extend their vacation schedule to a later date than in previous years to accommodate the many individuals and families seeking late summer outings, it was announced.

Both of the city's picturesque lodges have reported a greater than average demand for accommodations, due probably to an increased need felt by the people this year to "get away from it all." Because attendance at the city camps is restricted to comparatively small groups at a time to avoid crowding, early

Seven Colors Used in Designating Parties Tuesday

Election booths in Tuesday's primary were brightened by ballots of seven different colors.

Secretary of State Paul Peek missed an obvious combination, however, in failing to order the Communist party ballots printed on pink paper. This color was designated for the Prohibition party (which should have had white?) and the Communist tickets were salmon.

Other colors were: Republican, tuscany; Democrat, buff; Townsend, cream; Progressive, blue, and Non-Partisan, gold.

Bank's Business Review Reports July Decline from Level in June

While maintaining an increase over last year, business activity in California and the Far West declined in July from the June level, according to the Business Review just released by Bank of America's Analysis and Research department. The bank's preliminary index for July stood at 72.6 as compared with 76.1 in June, and 70.6 in the same month a year ago.

Total nonresidential building in California rose to a value of \$26,100,000 a gain of 127 percent over June. This was due, the review points out, to the stimulus of large contracts awarded for national defense projects, chief of which were naval air station facilities at Alameda and San Diego.

Contrary to the usual seasonal decline in new home construction, July permits were valued at \$20,200,000 an increase of 14 percent over June, and 47 percent above the same month a year ago. Retail trade showed a better than seasonal gain in July over June, and an increase of about 5 percent over July, 1939.

The Pacific coast index of industrial employment, the review states, stood at 124 percent of the 1923-25 average in June, as compared with 108 in the same month a year ago. In California the index was 143 in June, a new high. Coast shipbuilding, steel and metal working industries and aviation, the review reports, showed a high rate of activity in July.

The largest asteroid speeding around the sun is about the size of Texas.

The Lesser Antilles are formed by tops of a submerged chain of volcanoes which ring the eastern end of the Caribbean sea.

Newly hatched spiders can't eat.
registration of prospective vacationists through municipal camp offices in the L. A. city hall is being advised.

1941 Dodges to Have Fluid Drive

Recent rumors and new-model guesses associating the 1941 Dodge with "a revolutionary new driving feature," new crystallize into the definite information that the newest models of this popular automobile will feature the "fluid drive," according to Walter G. Lynch, Dodge dealer for this district with headquarters in Redondo Beach.

The "fluid drive" as employed by Dodge and described by Forest H. Akers, vice-president and director of sales, "has been in development for the past eight years; it is without question the most vital improvement in motor car operation since the introduction of hydraulic four-wheel brakes."

"Exceedingly simple as the new fluid drive is mechanically, it accomplishes a surprising number of improvements in driving results," says Sales Chief Akers. "The flexibility of this new fluid-power coupling is such that it reduces gear changing to points where the driver, when he wishes, may do entirely without shifting. While the cars, in the Dodge installation, remain equipped with a transmission giving three forward speeds, the fluid drive provides, in addition, an almost infinite variety of in-between speeds which go into action automatically and therefore call for no judgment or attention on the part of the driver."

"The fluid drive" enables even the inexperienced driver to perform, with perfect safety, such feats as ascending a hill in "high" at speeds as slow as one or two miles an hour, stopping on the hill, then starting again—without gear shifting, without in the least straining the engine, and without danger of stalling it."

A Scotch professional golfer, after fourteen years in retirement, has resumed the game. Reckon he must have found his ball again.

CAN YOU IMAGINE!



the gratitude of the underweight man in Bridgeport, Ohio who followed the advice of a friend and tried BISMA-REX for his acid stomach trouble. He secured instant relief and continued taking BISMA-REX with the result that he gained 40 pounds in four months.

EXPLANATION

Thousands of sufferers like the one described above say there's nothing you can take that brings faster, more complete relief from acid-indigestion than Bisma-Rex. This pleasant-tasting antacid powder starts to work almost instantly. In three minutes you notice a wonderful improvement. Acids neutralized; gas removed. Many forms of indigestion relief stop there; but Bisma-Rex keeps right on working. Holds acidity and gas in check for a prolonged period. Helps repair the harm done by excess acid in the stomach. Enjoy for yourself the fast, prolonged relief that has made Bisma-Rex famous. Only 50c at

BEACON DRUG CO.
The Rexall Store
Leslie L. Prince
1519 Cabrillo Ave., Torrance
Phone 180
Authorized Ticket Agency for Greyhound and Union Pacific Bus Lines.

Guards on Duty 24 Hours Daily at Dams

Guards now are on duty 24 hours a day at the flood control district's 13 dams, and replacements are being made as fast as the 60-day temporary appointments expire, according to flood control officials.

Two guards are assigned to each dam, each working an eight-hour shift. One guard comes to work at 4 p. m. and works until the second guard comes on duty at midnight, and the second

Strange as it sounds — our under-secretary of the navy has nothing to do with torpedoes or submarines.

There's a popular new book on the market called "Where Does All the Money Come From?" After you've read it, you still won't know.

guard goes off duty at 8 a. m. During the day there is a dam tender on duty at each dam, who is on the look-out for suspicious characters.

—Want Ads 25c—

CARSONMART

1929 Carson Street

Torrance

BUTTER

Solids lb. 32c
Colorado® Gold lb. 35c
Challenge lb. 36c
Knudsen lb. 37c
Danish lb. 37c

Kellogg's CORN FLAKES

2 8-oz. pkg. 9^c
2 large pkgs. 15c

A-1 FLOUR

10 lb. sack 39^c

Superior HONEY

2 12-oz. jar 29^c

Globe A-1 SESAME OIL

Pint bottles 22^c

Speedimix PIE CRUST

16-oz. package 18^c

RANCHO SOUPS

4 10-oz. cans 19^c

Dr. Phillip's ORANGE and GRAPEFRUIT JUICE
No. 2 can 10^c

Woodbury 1c SOAP DEAL

4 bars 22^c

Linit STARCH

2 12-oz. pkg. 17^c

RAP-IN-WAX

Senior size 15^c

HOLLY CLEANSER

3 cans 10^c

Par GRANULATED SOAP

Lge. pottery size 53^c

Delsey TOILET TISSUE

3 rolls 25^c

KLEENEX tissues

500 sheet "Economy" Packages 29^c

Box of 150 10c

JIMMY'S PRODUCE TEL. 709

—BEST FOR LESS—

ALL EVEN SIZE

RUSSET POTATOES 15 lbs. 19^c

LOCAL

Firm TOMATOES 5 lbs. 10^c

NEW BEST FOR COOKING

Bellflower APPLES 8 lbs. 25^c

GOLDEN RIPE No. 1

BANANAS lb. 5^c

ICE COLD GUARANTEED

WATERMELON lb. 1^c

GRUBB'S MARKET

• SHOP EARLY THIS WEEK. We will be closed Labor Day, be sure to fill your meat and grocery needs for the long weekend . . . Whether you picnic or have a dinner party we can make it a success with our fine meat cuts.

Luer's LINK SAUSAGE . . . 2 1/2-lb. pkgs. 25c

Luer's LEAN BACON (half or whole) lb. 18c

(Whole or Half)

Luer's Tender Unsmoked HAMS . . . lb. 20c

Fresh Dressed YOUNG HENS . . . lb. 23c

Fresh Dressed RABBITS . . . lb. 27c

RHODE ISLAND REDS . . . lb. 30c

Brand New, Big Value

PHILCO REFRIGERATOR

ONLY \$124⁹⁵
DELIVERED HERE

INCLUDING FIVE-YEAR PROTECTION PLAN

The finest refrigerator value ever offered . . . "de luxe" quality at an amazingly low price! Big, roomy, modern . . . with new features, new services. Come in . . . see how much the Philco Refrigerator LU-6 gives you for your money!

FULL FAMILY SIZE!

- Full size, 6 and one-quarter cu. ft. storage capacity.
- Oversize Freezing Unit.
- 4 Convenient Ice Cube Trays . . . 84 cubes.
- Vegetable Crisper.
- Crystal Glass Cold Storage Tray.
- Reserve Storage Bin.
- Durable Dulux Exterior, permanently white.
- Acid-resisting Porcelain Interior.
- Hermetically Sealed Power Unit.

... and Many More!

Big Trade-in Allowance
EASY TERMS

SAM LEVY Dept. Store

1307-1313 SARTORI AVENUE

TORRANCE

PHONE 121-W

HURRY! ONLY 4 MORE DAYS

Firestone TIRES

AS LOW AS \$5¹⁵

AND YOUR OLD TIRE

EVERYTHING FOR YOUR CAR AT MONEY-SAVING PRICES

LOW COST EASY TERMS * NO MONEY DOWN

Firestone

AUTO SUPPLY AND SERVICE STORES
GRAVENS and MARCELINA Torrance Phone 476