

**ANGLER'S SURVEY MADE**  
WASHINGTON (U.P.)—The Fish and Wildlife Service is conducting nationwide experiments on test streams to determine the percentages of planted fish hooked by anglers. The fish are tagged before being released.

## CAN YOU IMAGINE!



the new lease on life taken by this man from Long Island, New York who suffered for 25 years with stomach trouble. He started taking BISMA-REX and now after only two months finds his stomach behaving normally.

## EXPLANATION

Thousands of sufferers like the one described above say there's nothing you can take that brings faster, more complete relief from acid-indigestion than BISMA-REX. This pleasant-tasting antacid powder starts to work almost instantly. In three minutes you notice a wonderful improvement. Acids neutralized; gas removed. Many forms of indigestion relief stop there; but BISMA-REX keeps right on working. Holds acidity and gas in check for a prolonged period. Helps repair the harm done by excess acid in the stomach. Enjoy for yourself the fast, prolonged relief that has made BISMA-REX famous. Only 50c a box.

**BEACON DRUG CO.**  
The Retail Store  
Leslie L. Prince

1519 Cabrillo Ave., Torrance  
Phone 180  
Authorized Ticket Agency for  
Greyhound and Union Pacific  
Bus Lines.

(Political Advertisement)



**VOTE FOR WILLIAM G. BONELLI**

**DISTRICT ATTORNEY**

PROTECT THE INNOCENT  
ELECT BONELLI  
PROSECUTE THE GUILTY

(Political Advertisement)

## New Bus Schedule Announced By Local Agency

Latest revised Greyhound bus schedule, released early this week by the local agency, the Beacon Drug Company, at 1519 Cabrillo Beach, leaves here at 6:15 a. m.; 8:24 a. m.; 10:42 a. m.; 11:15 a. m. and 12:12 p. m. Also, 1:42 p. m.; 3:42 p. m.; 4:38 p. m.; 5:49 p. m.; 7:25 p. m. and at 11:13 p. m.

Southbound buses may be taken at the Beacon Drug at 6:34 a. m.; 8:47 a. m.; 10:14 a. m. and at 11:44 a. m. Also, at 1:17 p. m.; 2:34 p. m.; 3:13 p. m.; 4:12 p. m.; 5:20 p. m.; 8:12 p. m. and at 10:17 p. m.

Buses boarded here go via the beach area north to Santa Barbara, San Francisco and Portland; and south, to Long Beach and San Diego, and east to Phoenix, El Paso, Salt Lake City and Chicago.

## U. S. Marine Corps Reserve Recruiting for L. A. Training

A splendid opportunity for Torrance youth to enjoy the training and general activities of the U. S. Marine Corps Reserve was offered this week by W. S. Van Dike, major in command of the 22nd Battalion which is now recruiting to full strength. Young men from 17 to 35 are wanted for the Reserve service which includes but one drill (Thursday nights) per week at the new armory in Chavez Ravine.

Full information concerning enlistment may be obtained at the Marine Recruiting Station in the Federal Postoffice building at Main and Temple streets from Sergeant Major N. M. Grieco, Room G-35. There is a special demand for amateur radio operators, cooks and musicians to form a 50-piece band. The Marine Reserve battalion plans a number of athletic events and has the use of the Armory swimming pool.

## Hawthorne Avenue Property Sold

LOMITA—Sale of the Walteria postoffice building and confectionery at 24250 Hawthorne avenue to Mrs. P. B. Tuttle and Mrs. Mabel Tippitt of Walteria is being completed by Loy Knight.

Mrs. Knight, who last year took over the Walteria postmaster's office from Mrs. Nona De Nelle, has purchased a confectionery at 2211 Lomita boulevard in Lomita. Transfer of the postmaster's office to the new owners is being arranged.

The Walteria postoffice, a fourth class, was moved late last year from the building at 3417 Newton street to its present quarters.

## New Feed Store Open on Carson

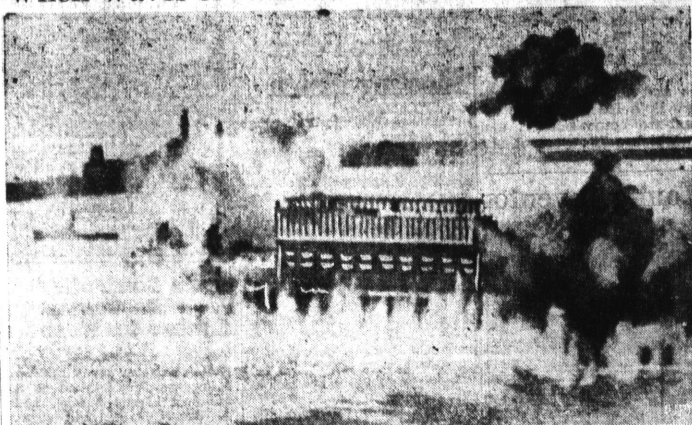
George Snyder, operator of feed stores in Wilmington and San Pedro, this week opened a new store at 1650 Carson street in Torrance.

Snyder's new store will carry a complete line of feeds. He has been in feed business for more than sixteen years.

The black widow is the only poisonous spider of temperate North America.

(Political Advertisement)

## When Waves of Nazi Air Raiders Bombed Dover



Britons thought the long-expected blitzkrieg may have begun in earnest when hundreds of German planes struck in wave after wave on such important ports as Dover, where this picture was taken in a "preview" attack, and Portland naval base. Bombs were exploding when this picture was snapped. Inside sea wall in background.

## It's a Strike—Not a Movie



In strike for better wages, Detroit grave diggers put on this ghost act to dramatize their demands while picketing cemetery gates. Strike halted some burials.

## Three Marine Parades Scheduled For Harbor Host Days

Preparations for three separate marine parades here Saturday, Sept. 7, as features of Harbor Host Days, were made last night at a committee meeting. The three divisions will be small boats, purse seiners and yachts.

The small boat group, comprised of the commercial and sport fishing fleet, will assemble in Consolidated channel and the east basin promptly at 12 noon, Sept. 7. Arrayed in whatever flags and bunting their owners care to fly, the long line of small craft will go down channel and make a tour of the outer harbor, careful to avoid the big New Zealand clipper which is due here at 3 p. m. that day. The boats are not expected to start the down-channel run until about 1 p. m.

Purse seiners and power and auxiliary yachts will parade from the east basin to the outer harbor at 8:30 p. m. and are requested by the committee to display all possible lights.

During Sept. 6 to 8 inclusive, any fish canneries operating will be prepared to conduct tours thru their establishments, it was announced by Charles Winkler, secretary of California Fish Cannery Association.

Sailing races will be held the afternoon of Sept. 6.

## Busy Week Ahead For Ladies At Encampment

Charabel Darling, local publicity chairman of the 1940 National Encampment Ladies Auxiliaries, Veterans of Foreign Wars of the United States, today gave a resume of the encampment program which starts this Sunday, at the Hollywood Bowl.

Sunday, August 25, 7:00 p. m., annual memorial services, Hollywood Bowl; Monday, August 26, 10:00 a. m., joint opening session with a banquet at 7:30 p. m. On Tuesday of next week, starting at 9:00 a. m., groups will hold business sessions, with a military parade at 7 p. m. Wednesday is featured by the annual auxiliary luncheon and pageant of drums at the Los Angeles coliseum. A giant military ball, at the Shrine auditorium, with movie stars present is the program for next Thursday. On the concluding day, Aug. 30, election and installation of officers will be held.

The next presidential term begins Jan. 20, 1941.

(Political Advertisement)

## SAMPLE BALLOT

Member of Assembly, 68th District

**EDGARS S. FRENGER**

Torrance resident 20 years, Taxpayer, Veteran, Union Member, Not just another politician.

**X**

**THE LONGEST BARGAIN COUNTER IN TOWN... HERALD-NEWS WANT ADS**

## Navy May Take Over Terminal Island

In some measure beneficial to Torrance and to Torrance industries, is the contemplated plan of the Federal government to take possession of Terminal Island, or at least a major portion of this harbor area.

Presaging what is expected to be the greatest naval development program on the Pacific Coast, the Government this week filed "a complaint in eminent domain" in Federal Court whereby it will take immediate possession of Terminal Island.

The development program in the Long Beach-Los Angeles area has been estimated to involve more than \$30,000,000.

It was stated that sufficient funds have already been impounded to compensate the city of Los Angeles, the city of Long Beach, Los Angeles County, the State of California and various individuals who now hold title to the land desired.

The Navy already holds a lease on 228 acres on the southwestern portion of the island, which is owned by the city of Los Angeles.

As part of the great naval development program, huge docks will be constructed to accommodate large naval vessels, and dredging operations will give additional space besides the land condemned.

Stores of buildings, including airplane hangers, warehouses, and administration buildings will be constructed on the island. **SEEK IMMEDIATE USE**

The petition pointed out that the land was required for immediate use, in order that "necessary work may be begun at the earliest practicable date in the construction, installation and operation of naval fleet operating facilities including dockings, buildings and accessories, breakwater and dredging."

Terminal Island is an artificial island located in Los Angeles Harbor, above ordinary high water mark, and was not in existence as an island at the time the State of California was admitted to the Union.

## Judge Hanson Seeks Retention on Bench

Superior Judge Clarence M. Hanson, candidate for retention in Office No. 12 at the August primary, was engaged in law practice for more than 25 years before his appointment to the bench. While in practice Judge Hanson was counsel among others for the Chase National Bank and Bank of America as trustees of the bondholders of Pan-American Petroleum Company in the Richfield Oil Company reorganization.

Prior to going on the bench Judge Hanson specialized in federal practice. He is a graduate of the State University of Iowa, and of Harvard Law School. He entered the practice of law at Fort Dodge, Iowa in 1913.

## Roosevelt Sets 'Day of Prayer'

HYDE PARK, N. Y. (U.P.)—President Roosevelt has set aside Sunday, Sept. 8, as a day of prayer when Americans of every creed and denomination should ask God "to grant to this land and to the troubled world a righteous, enduring peace."

The White House, Capitol building, Senate and House office buildings in Washington, D. C., are air conditioned.

Want Ads 25c

(Political Advertisement)



## Noted Humorist Supports Judge LeRoy Dawson

Asking that he be enrolled as, "an ardent supporter of Judge LeRoy Dawson," Irvin S. Cobb, noted author and lecturer, has offered his services to the volunteer committee sponsoring Judge Dawson's candidacy for election to Office 14 of the superior court at the August 27 primaries.

"I'm not being fulsome when I tell you that I regard Roy Dawson as one of the most useful and most admirable citizens of this section," said Cobb. "The people know his record—as a gallant soldier who suffered grievous wounds in the Great War; they shot away various parts of him but, thank God, spared his sense of humor. They know him as a just and kindly judge; as a worker for every good and worthy movement."

"But those of us who are so fortunate as to be his personal friends know him as a gracious companion, a shrewd appraiser of human nature, a man charitable in his estimates of his fellow man."

Want Ads 25c—

(POLITICAL ADVERTISEMENT)

## ELECT A REAL DEMOCRAT TO THE ASSEMBLY



**VINCENT THOMAS**

• ABLE

• HONEST

• EFFICIENT

22 Years in This District

VINCENT THOMAS knows the wants, needs, and desires of the people in the 68th Assembly District, and will work intelligently to get them fulfilled.

VINCENT THOMAS will fight for a Greater Harbor, a Navy Drydock, a Navy Yard, and Adequate Defense for Los Angeles Harbor.

VINCENT THOMAS has always been a consistent friend of Organized Labor.

VINCENT THOMAS is owned by NONE—Subservient to no one. An honest liberal good government candidate for the State Assembly.

• EXERCISE YOUR PRIVILEGE to be represented by a man of proved ability. Elect Vincent Thomas at the primaries Tuesday, August 27th.

(Political Advertisement)

(Political Advertisement)

## KEEP LEE E. GEYER IN CONGRESS



**VOTE FOR HIM**  
at the  
PRIMARY  
ELECTION  
TUESDAY  
AUGUST 27

Congressman Geyer has succeeded in obtaining real defense facilities for the Harbor Area. There is no substitute for experience — re-elect him.

**HIS RECORD IS GOOD... THEY CAN ONLY CALL NAMES!**

## James J. (Jimmie) O'Toole FOR ASSEMBLY DEMOCRAT



**O'TOOLE IS UNCONTROLLED**

Free To Vote For Your Interests

A Man of Action

Honest — Fearless

A Fighter

Advocates Peace, Progress and Plenty for All

SEND HIM TO THE ASSEMBLY AND SAFEGUARD THE INTEREST OF "ALL" THE PEOPLE IN THE 68th DISTRICT.

Two of the members of the Swedish Folkdance Club, which will appear at picnic at Montebello American Legion Park, Sunday, August 18.

## Contemporary Art On Display

An exhibition of the works of contemporary Southern California artists is on view at the Palos Verdes Community Arts Association. The group of paintings by such artists as Paradise, Bedell, Julien, MacDonald-Wright, Swiggett and others has been loaned to the Palos Verdes group for display in the library building by Raymond and Raymond galleries in Hollywood.

## TRAVEL TO TAHOE

Travel to Lake Tahoe this season is enjoying greatly improved highways, states the Sacramento office of the National Automobile Club. On both the Auburn and Placerville routes the direct roads from Sacramento—short stretches have been under construction most of the summer, but this has been so handled that a minimum of inconvenience has been presented to the motoring public.

## Unusual Charge Against Torrance Hay Truck Driver

Charles Schmultz, of Torrance, was in the Redondo Beach police court last weekend on an unusual charge, that of aiding in the throwing of hay, at passing motorists.

According to Judge Sam Austin of the beach city, Schmultz pleaded guilty and drew a suspended sentence, as he did not do any of the hay throwing himself, but merely was the driver of the hay truck on which were riding a group of playful boys.

## MEXICAN PYRAMID ROAD

Work on the road to the Mexican Pyramids of Teotihuacan will be completed in a short period of time, according to the touring department of the National Automobile Club. Heavy tourist travel to this center of attraction will be greatly expedited with the new highway.

The 1940 Wyoming cattle brand book contains 18,740 brands.