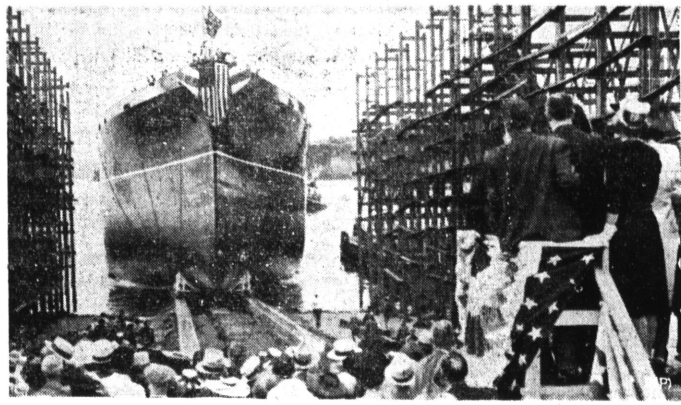


A Rare War Casualty Picture



This is one of the few casualty pictures released in European war. Just released by German censor, it asserts shows British soldiers dead beside their motor lorries, in retreat from Flanders.

It's First Launched in Northwest Since War



This was a great moment for Pacific Northwest shipbuilding industry, as the 12,000-ton Cape Alva slid down ways of Seattle-Tacoma Shipbuilding Yards at Tacoma. It's first launching since World War days. Cape Alva was christened by Mrs. Anna Roosevelt Boettiger, daughter of the President.

Buddy Baer Fights Paralysis



Buddy Baer, 260-pound brother of Maxie Baer, and himself a heavy-weight contender, shown in Sacramento hospital where he is fighting a paralysis threat as result of spinal injury suffered in recent victory over Nathan Mann in New York.

Births Gain In State During First 5 Months

SACRAMENTO (U.P.) — The state department of public health reports a tremendous increase in requests for searches for birth certificates because of requirements for certificates for employment in airplane and other factories and enlistment in the army and navy. The department received 1,457 requests in June, compared with 671 in May, 1939.

Want Ads 25c

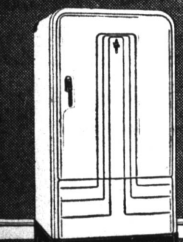


Now Eat Candy and Grow Thin
You can lose ugly pounds and have a slender, graceful figure. No exercise. No weakening diet. You simply follow this easy AYDS Candy plan and lose weight. Mrs. C. Miller, Chicago, writes that she lost 42 pounds in 60 days and feels 100 per cent better.

EXPERIENCED USERS CHOOSE

THE MODERN SILENT GAS REFRIGERATOR

Only Servel Electrolux Freezes with No Moving Parts!



HERE'S WHY: it has no moving parts in its freezing system... and that means other exclusive advantages. Servel Electrolux saves more for more years... in food savings and on operating cost.

- No Moving Parts in its freezing system
- Permanent Silence
- Continued Low Operating Cost
- More Years of Dependable Service
- Savings That Pay For It



Moist Cold—Dry Cold
You Get BOTH!



How Action Freshens keeps vegetables and fruit always moist and cool of flavor.



Dry or Moist Meat Storage, whichever you desire, simply by adjusting cover.

Plus... Flexible Interior Arrangement, Trigger Releases for Trays and Cans.

Whether you're buying your first automatic refrigerator—or changing to your second—get the whole story of Servel. See it at our showrooms today.

Your local dealer can please you most.

NATIONAL HOME APPLIANCE CO.

Harry M. Abramson
"FRIENDLY CREDIT"
1328 SARTORI AVE.
Phone 78

Golden Campaign Group Announced

Charles Mitschrich, Torrance attorney, this week entered on his duties as chairman of the local campaign committee that will work for the nomination of Mrs. Clara N. Colden as Democratic candidate for Congress in this district. Mitschrich was elected to the post at an organization meeting at the home of Mr. and Mrs. T. F. Tidwell, 1600 West 216th street.

Six committee vice-chairmen were elected. They are: Wallace H. Gilbert, Charles Darrow, Grover C. Whyte, T. F. Tidwell, Adrian I. Thompson and Mrs. Mildred Parkins. Mrs. Marjorie Lessing, wife of City Judge Robert Lessing, was elected secretary.

Judge Lessing, who is a member of the campaign committee, will take an active part in the campaign to nominate Mrs. Colden, it was stated. Other committee members include Mrs. Eugenie Thompson, Mrs. T. F. Tidwell, W. G. Snyder and Mr. and Mrs. J. Stewart Miller. The committee will be enlarged to include a representative from each of the Torrance precincts, chairman Mitschrich said.

A Colden-for-Congress campaign committee also has been organized at Harbor City, with William Myerscough, well-known business man and long time resident of that community, as chairman, it is announced.

Co. Workers on Military Leave Have Jobs Held

Assurance that positions vacated by reason of military leave shall be held open for the permanent incumbents when they return was given this week in a resolution adopted by the board of supervisors, on motion of Supervisor Oscar Hauge of Long Beach.

The civil service commission is requested not to hold examinations for replacements of incumbents occupying these positions, during their absence on military leave, and Wayne Allen, chief officer for the board, was instructed to work out details of the policy.

New Coffee and Broiler Robots Make Table Cookery Delightful



"Come out of the kitchen!"

That's exactly what one does with the very new electrical coffee or broiler robots now available exclusively at Sam Levy's hardware department. You can whip up an entire meal on your bright, shiny chromium marvels of efficiency without moving from your seat at the dining table!

Both are Faberware products. First, let's take a look at the small coffee robot: It's absolutely fool-proof—you get perfect coffee every time. It turns off automatically when the coffee is finished, stirs it, and after it is brewed keeps it hot indefinitely by means of an automatic thermostat heat control. You don't even have to watch it.

Coffee robots, in four sizes from six to 10 cups, have their counterparts in automatic tea robots, also chromium plated inside and out. The latter brew tea conveniently, deliciously and automatically keep it hot as long as desired.

Now, the broiler robots: You can broil, cook or toast with them. They have two heat controls, low and high, and you use them at your dining table. Their round shape is particularly well adapted for casserole dishes. There's another design with a handsome well and tree platter. All of the broiler robots have grills and platters, so that after

your steak or chops are cooked to a turn, you simply take the meat from the grill and serve it in its own delicious juices.

The robots are wonderfully easy to clean—the heating element is removable and you can wash to top and bottom in soapy water. All of the robots are made of brass (it is non-porous) and they are the finest gifts one can buy for a new bride—or to

State's Chrome Ore Deposits Increase in Value Result of War

SACRAMENTO (U.P.) — California's deposits of chromite or chrome ore, the largest known in the United States, have increased potential value as the result of war conditions and the possibility that heavy imports from foreign countries might be curtailed, it was reported by the state division of mining.

Chrome is obtained more cheaply in other countries but during the five war years of 1914 and 1918, California produced 180,519 tons of ore. For the 10-year period before the war and the entire period since then, the state's production has averaged less than 1000 tons per year. Foreign imports in 1939 amounted to 352,085 tons.

The Rustless mining corp., of Grants Pass, Ore., has purchased the largest deposit of chrome ore now known to exist in Siskiyou county, estimating it can produce 500,000 tons of commercial chromite if the ore is mined. This would supply the normal requirement of the nation for one year.

Negroes got to vote in the Bahamas in 1830, eight years before abolition of slavery there.

make your home work easier and cooking more of an adventure.

A Levy Special . . .

MISSSES' and WOMEN'S COATS

Tweeds and Plain Colors.

Smartly Fashioned, Nicely Lined.
Specially Low Priced
Friday and Saturday

\$9.95

Personality for Sale



These new Phoenix Personality shades have a way of glamorizing your legs. The tones will grow on you . . . and glow on you! See INTRIGUE—an unusual toasted tan, and ELATION—a stunning copper bright.

PHOENIX Vita-Bloom HOSIERY

PHOENIX shades literally bloom with loveliness because of the exclusive VITA-BLOOM process.

79c \$1.00 \$1.25 PAIR

SAM LEVY
DEPARTMENT STORE
1307-1313 SARTORI AVENUE TORRANCE PHONE 121-W

DISCOUNT CUT RATE DRUG "United Cigar Agency"

1225 EL PRADO PHONE 562 TORRANCE

Prints made from your Favorite Snapshot Any size negative . . . 3¢

SALE! STARTS TODAY!

CATALOGUE OF VALUES!
LET US BE YOUR GUIDE TO GREAT SAVINGS ON DRUGS, COSMETICS, TOBACCO

SUN GLASSES PROTECT YOUR EYES REG. 15¢ 9¢	BATH BRUSH LONG DETACHABLE HANDLE... 21¢
50¢ KOLYNOS TOOTH PASTE 39¢	60¢ ALKA-SELTZER 54¢
100¢ NEET HAIR REMOVER 79¢	35¢ MUM DEODORANT 29¢
50¢ CALOX TOOTH POWDER 43¢	50¢ PHILLIPS MILK OF MAGNESIA 39¢
TOOTH BRUSH QUALITY BRISTLE REG. 15¢ 6¢	WHITE SHOE POLISH WILL NOT RUB OFF REG. 10¢ 7¢
50¢ IPANA TOOTH PASTE 39¢	50¢ VITALIS HAIR TONIC 39¢
50¢ IODENT TOOTH PASTE 33¢	100¢ DRENE SHAMPOO 79¢
50¢ SQUIBBY DENTAL CREAM 33¢	110¢ TANGEE LIPSTICK 89¢
WHITE ENVELOPES PACK OF 25's... 3¢	SANITARY BELTS ADJUSTABLE NO PINS... 9¢

ALARM CLOCKS
Guaranteed \$1.50 79¢

BOTTLE OF 100
ASPIRIN TABLETS 13¢
GLYCERINE 12¢
SUPPOSITORIES 11¢
FOR CUTS • REG. 10¢
MERCUROCHROME 3¢
SPECIAL • REG. 10¢
IODINE 3¢
REG. 15¢ • 1/2 • 5 YDS
ADHESIVE PLASTER 5¢
REG. 10¢ • GAUZE
BANDAGE 4¢

ZIPPER BAGS
WATERPROOF LINING
TAN or BLACK 18¢
REG. 12.00 98¢

Sale of SOAPS

LUX SOAP 10¢ CAKE 4 for 19¢
IVORY SOAP MEDIUM CAKE 2 for 9¢
LIFEBUOY HEALTH SOAP 4 for 19¢
10¢ PALMOLIVE TOILET SOAP 5¢

DE LUXE Kettex CAMERA
with 57.5 mm. MASTER LENS
TAKES SNAP SHOT OR TIME EXPOSURES
\$2.49

CANDID TYPE CAMERA
Complete with Eveready case \$1.49

REG. 25¢ • LATEX
RUBBER GLOVES 9¢
REG. 5¢ • 3 INCH VELOUR
POWDER PUFFS 3¢
REG. 25¢ • QUALITY
TOOTH PASTE 6¢
REG. 15¢ • IMPORTED
OLIVE OIL 7¢

NEW! AIR COOLED PIPES 59¢