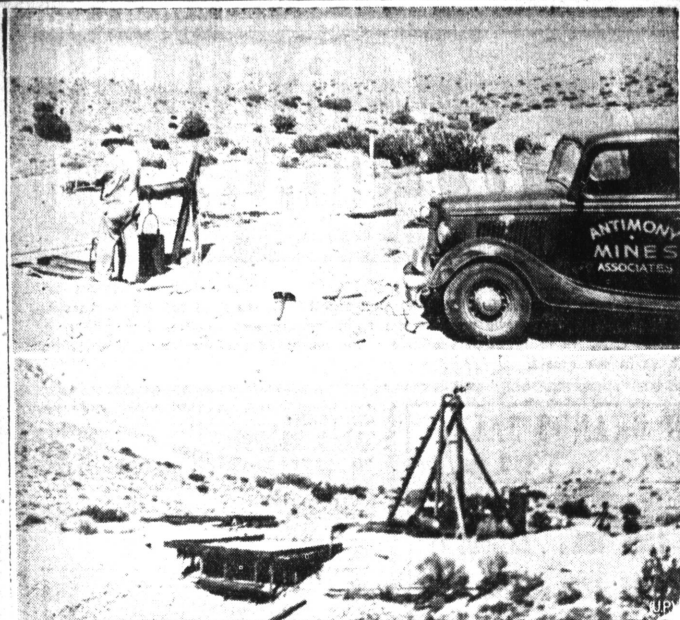


Buying A Want Ad Is The Same As Employing A Sales Force



WAR REVIVES OLD ANTIMONY MINES
Historic Amelia antimony mine in California's eastern Kern county, first worked in 1892, is being worked again because war has boosted price of vital mineral. In upper photo, worker hoists ore samples from 75-foot shaft. Frame in lower

photo covers deepest shafts on antimony flats above Pine Tree canyon. Even dumps of old Amalia mine were worked. Property hit peak during last war, when antimony brought 27 cents a pound, was abandoned after armistice.

Why Not Sherbet For Dessert?

By Katharine Fisher
Director, Good Housekeeping Institute

If you have a good automatic refrigerator, fruit sherbet is no trick at all to make. It's just a question, mainly, of making up a simple mixture, putting it in the freezing trays, and letting your refrigerator do the rest. The cry for better fruit sherbets started wheels turning in our Institute kitchens. Testing and retesting first this combination and then that one, checking these proportions and dozens of others, brought forth recipes for fruit sherbets like those below. You will find they offer the perfect dessert for ending many a meal.

Buttermilk Sherbet

(Tested by Good Housekeeping Institute)

Use Institute-approved measuring cups and spoons. Measure level.

- 2 c. buttermilk
- 1/2 c. granulated sugar
- 1 c. canned crushed pineapple
- 1 egg white (unbeaten)
- 1 1/2 tsp. vanilla extract

Combine buttermilk, sugar, and crushed pineapple, which has been drained of a little of the juice. Place in the freezing tray of an automatic refrigerator with control at coldest setting, and freeze to a mushlike consistency. Remove to a bowl, add the egg white and vanilla, and beat until light and fluffy, using a hand beater or an electric beater at high speed. Return to tray and freeze until firm. Serve 6.

Lemon Milk Sherbet

(Tested by Good Housekeeping Institute)

Use Institute-approved measuring cups and spoons. Measure level.

- 1 1/2 c. granulated sugar
- 3/4 c. bottled milk or 1 1/2 c. evaporated milk
- 1 1/2 c. water
- 1/2 c. lemon juice
- 1 tsp. salt
- 2 tsp. plain unflavored gelatin
- 1 1/2 c. cold water

Dissolve sugar in warmed milk by stirring and add lemon juice, salt, and cold water. Boil water for 5 min., place in a tray of boiling water, and heat until gelatin is dissolved, while stirring. Then add to first mixture. Pour into a tray of an automatic refrigerator with control at coldest setting and freeze until frozen about 1 1/2" from edges of tray. Stir and whip with a fork until smooth. Freeze until firm. A half hour before serving stir and whip again with a fork until smooth. Serve 6. To serve 3 or 4 make half this recipe.

Pineapple Sherbet

(Tested by Good Housekeeping Institute)

Use Institute-approved measuring cups and spoons. Measure level.

- 1 c. water
- 1 c. granulated sugar
- 1 tsp. plain unflavored gelatin
- 2 1/2 c. cold water
- 1/2 c. lemon juice
- 1 No. 2 can or 2 1/2 c. unsweetened pineapple juice

Boil 1 c. water with 1/2 c. sugar for 10 min., then add to the hot sugar syrup. Add lemon juice and pineapple juice. Pour into a tray of an automatic refrigerator, with control at coldest setting, and freeze until frozen about 1 1/2" from edges of tray. Beat egg whites until stiff, adding the remaining 1/2 c. sugar. Stir and whip the sherbet with a fork and fold in the beaten egg whites and sugar mixture. A half hour before serving stir and whip with a fork until smooth. Serve 6. To serve 3 or 4 make half this recipe.

Orange Sherbet

(Tested by Good Housekeeping Institute)

Use Institute-approved measuring cups and spoons. Measure level.

Substitute 2 1/2 c. fresh orange juice for pineapple juice in Pineapple Sherbet recipe above, using 1 tablespoon less sugar.

Grape Sherbet

(Tested by Good Housekeeping Institute)

Use Institute-approved measuring cups and spoons. Measure level.

Substitute 1 pt. of grape juice for pineapple juice in Pineapple Sherbet recipe above, using 1 tablespoon less sugar.

Follows Farley



Edward J. Flynn of New York, who succeeded Festina Gen. James A. Farley as Democratic national chairman. Several prominent Democrats turned down job.

State Picnic-Reunions

GULF STATES . . . The four states of Florida, Alabama, Mississippi and Louisiana will hold their annual picnic reunion Saturday, Aug. 17, in Sycamore Grove Park, Los Angeles. Each state will have a separate section of the picnic program will be staged at 2 o'clock.

MISSOURI . . . All former residents of the "Show Me" state will hold their picnic reunion Sunday, Aug. 18, in Sycamore Grove Park, Los Angeles. A program will start at 10 a. m., and continued throughout the day.

Milk Consumption

Tops All Other Drinks in State During 1939

SACRAMENTO (U.P.)—California drank more milk than alcoholic beverages. The state department of agriculture reports the milk consumption of the state in 1939 was 164,630,660 gallons. The state board of equalization discloses that the state consumed 108,086,184 gallons of hard liquor, beer and wines last year.

Health Baths Manager

Returns from Vacation

Miss Ila Jones, manager of Redondo Health Baths, has returned to her duties at the baths after several weeks absence. Miss Jones is now ready to receive her former patrons and continue to offer the many health aids and services that have made Redondo Health Baths the mecca for health seekers throughout the South Bay area.

ODD SIGNS IN COURT

HUNTINGTON, Ind. (U.P.)—First witness in the divorce suit of Dr. Melvin W. Tinkham against his wife Nina answered questions of the court by either a "yes" or "no," translated by lifting his left knee or by wiggling his left foot. The witness was Dr. Tinkham, who had suffered a stroke.

CLASSIFIED ADVERTISING RATES AND INFORMATION

Your advertisement in this section reaches EVERY RESIDENT in Torrance, Lomita, Harbor City, Waverly, Rolling Hills and adjacent rural territory.

15 Word Minimum	Cash	Chg.
15 Words, 1 Time	25c	35c
15 Words, 2 Times	45c	55c
15 Words, 3 Times	65c	75c
15 Words, 4 Times	85c	95c
1 inch—1, 2, 3, Times, per insertion	50c	60c

5c (1c each) for each additional 5 words or fraction thereof, per insertion.

Cash rate allowed on all ads received by phone or mail if paid within 48 hours of date ordered.

Rates quoted are for consecutive insertions. Where change of copy is ordered, earned rate will be charged.

Ads may be cancelled after any insertion. Rate earned will be charged and balance refunded for unused space.

Not responsible for more than ONE incorrect insertion of any ad.

Longer term rates with space rates, furnished on request.

Closing time for all classified ads, Wednesday, 5:00 p. m.

Cemeteries

WOULDN'T CONTENTMENT BE FOREVER YOURS IN THE KNOWLEDGE THAT YOU HAD GIVEN EVERY CONSIDERATION TO THE SELECTION OF A SUITABLE MEMORIAL FOR YOUR LOVED ONES? THIS YOU CAN DO IN NATURE'S OWN SETTING WHERE PEACE AND DIGNITY REIGN. PACIFIC CREST IS BEAUTIFULLY SITUATED ON HIGH GROUND, EASILY REACHED FROM ALL DIRECTIONS AND WITH GOOD ROADS RIGHT TO OUR ENTRANCE. WE CORDIALLY INVITE YOU TO INSPECT OUR MANY TYPES OF SERVICE.

PACIFIC CREST

182nd St. & Inglewood Ave. Redondo 3388

Lost and Found

KEYS on long chain lost around Carson & Wilmington, or water Dept., or (Crescent Ave.) Monday. Reward, 1739 Western Ave.

RED cocker spaniel puppy, 3 mos. old. Reward if returned to Dr. Harrison, 1111 El Prado.

Professional Services

Insure T-O-D-A-Y
TOMORROW MAY BE TOO LATE
Howard G. Locke
1406 Marcelina, Tor. 135M

INSURANCE, General
—SPECIALIZING IN—
AUTOMOBILE—
FIRE—FURS—
PLATE GLASS—
Ask for quotations on other lines.
WALLACE H. GILBERT
1631 COTA AVE. TOR. 420

LORRAINE TOPE
REAL ESTATE—LEASES
RENTALS—SALES
INSURANCE—ALL TYPES
1641 GRAMERCY—TOR. 154

REAL ESTATE—RENTALS
INSURANCE
L. J. Hunter
NOTARY PUBLIC
2035 W. 24th St., Lomita 351

Order your wedding invitations and announcements at least one week in advance. Torrance Herald or Lomita News.

LOMITA CAFE
Chester Reed, Prop.
MERCHANTS LUNCH
(Including soup and dessert) 35c
All Home Cooked Food
Open 5:30 a. m. to 12 p. m.
Daily and Sunday
21605 Narbonne, Lomita

POLLY'S CAFE
YOU CAN EAT AT HOME AWAY FROM HOME. IF YOU TRY OUR REAL HOME COOKING.
DAILY PLATE LUNCH 25c
DINNERS 35c
LARGE PIECE HOME MADE PIE 10c
Open 5:30 a. m. to 5 p. m.
1947 Highway 101 Lomita

Have a carefree vacation with your hair free from care. Consult our Beauty Aids. Classification 30.

Among our advertisers you will find many competent operators ready to give each patron the personal attention she may need.

What is yours? Oil reconditioning? Permanent waving or hair styling?

READ our want ads for Service and Savings

Torrance Herald Lomita News



15 WORDS
25c

CALL MISS LEE TORRANCE 444

and let her help you word an ad!

Where to Eat —28

A-L-L-E-N'S
"Where Price & Quality Meet"
A VISIT TO ALLEN'S WILL BE A SURPRISE.
FOR LITTLE DID YOU REALIZE.
THAT AIR CONDITIONING CHANGES THE AIR.
EVERY TWO MINUTES, SO THERE-THERE (No Cover Charge)
WE SERVE BREAKFAST
Open Daily 7 a. m. to 12 Midnight
Sundays, 11 A. M. to 12 P. M.
1333 El Prado, Tor. 745

ATTEBERY'S
FAMILY STYLE DINNERS
CLUB & AFTERNOON PARTIES BY APPOINTMENT
Daily Hours
11 a. m. to 2 p. m.
5 p. m. to 8 p. m.
Sundays—Holidays
Noon to 3 p. m.
Two Salads—Two Vegetables
Homemade Jellies and Jams
SOUTHERN FRIED CHICKEN 55c
STEAMED CHICKEN 55c
BAKED HAM 65c
FROG LEGS (by appointment only) \$1.50
BE SURE TO REGISTER FOR A FREE DINNER LUNCH AND AFTERNOON S-P-E-C-I-A-L-S
ATTEBERY'S
RANCH DINNERS
Mrs. M. E. Attebery, Proprietor
4010 W. Sepulveda Blvd., Tor.
PHONE REDONDO 6502

CANARY INN
1219 EL PRADO TORRANCE
BUSINESS MEN'S COMPLETE LUNCH 35c
CHILD AND TANGLES
MALTS 10c
HOME MADE PIES
WE SERVE BREAKFAST WOMEN COOKS
OPEN 6:30 A. M. TO 12 M.

Cherry Blossom Chop Suey Parlor
ALL CHINESE SPECIALTIES
SPECIAL PLATE DINNERS
WE SERVE FAMILY STYLE
Any Order Put Up To Take Out
1311 Sartori Ave. Torrance

CHEF CAFE
(JUST REAL FOOD)
2119 Highway 101, LOMITA
Special
35c—Real Italian Spaghetti
Every Wednesday 35c
25c—Merchants Lunch
11 a. m. to 3 p. m. 25c
Hot Cakes at All Times
50c—Special Sunday Dinner—50c
Open 5 a. m. to 8 p. m.
Silex CAFE
NO BEER

FAMOUS CHILI SHOP
Delicious Homemade Chili
Famous Style Hamburgers
Cocktail Lounge
NEXT TO POST OFFICE
1437 Marcelina Torrance
LONE PINE INN
(CHICKEN DINNERS)
"Good Old Fashioned"
R-E-A-L Fried Chicken
Dinner (Lots of Hot Biscuits)
115 W. Sepulveda Cor. Main
Phone Wilmington 1555

LOMITA CAFE
Chester Reed, Prop.
MERCHANTS LUNCH
(Including soup and dessert) 35c
All Home Cooked Food
Open 5:30 a. m. to 12 p. m.
Daily and Sunday
21605 Narbonne, Lomita

POLLY'S CAFE
YOU CAN EAT AT HOME AWAY FROM HOME. IF YOU TRY OUR REAL HOME COOKING.
DAILY PLATE LUNCH 25c
DINNERS 35c
LARGE PIECE HOME MADE PIE 10c
Open 5:30 a. m. to 5 p. m.
1947 Highway 101 Lomita

Have a carefree vacation with your hair free from care. Consult our Beauty Aids. Classification 30.

Among our advertisers you will find many competent operators ready to give each patron the personal attention she may need.

What is yours? Oil reconditioning? Permanent waving or hair styling?

READ our want ads for Service and Savings

Torrance Herald Lomita News

Where to Eat —28

A-L-L-E-N'S
"Where Price & Quality Meet"
A VISIT TO ALLEN'S WILL BE A SURPRISE.
FOR LITTLE DID YOU REALIZE.
THAT AIR CONDITIONING CHANGES THE AIR.
EVERY TWO MINUTES, SO THERE-THERE (No Cover Charge)
WE SERVE BREAKFAST
Open Daily 7 a. m. to 12 Midnight
Sundays, 11 A. M. to 12 P. M.
1333 El Prado, Tor. 745

ATTEBERY'S
FAMILY STYLE DINNERS
CLUB & AFTERNOON PARTIES BY APPOINTMENT
Daily Hours
11 a. m. to 2 p. m.
5 p. m. to 8 p. m.
Sundays—Holidays
Noon to 3 p. m.
Two Salads—Two Vegetables
Homemade Jellies and Jams
SOUTHERN FRIED CHICKEN 55c
STEAMED CHICKEN 55c
BAKED HAM 65c
FROG LEGS (by appointment only) \$1.50
BE SURE TO REGISTER FOR A FREE DINNER LUNCH AND AFTERNOON S-P-E-C-I-A-L-S
ATTEBERY'S
RANCH DINNERS
Mrs. M. E. Attebery, Proprietor
4010 W. Sepulveda Blvd., Tor.
PHONE REDONDO 6502

CANARY INN
1219 EL PRADO TORRANCE
BUSINESS MEN'S COMPLETE LUNCH 35c
CHILD AND TANGLES
MALTS 10c
HOME MADE PIES
WE SERVE BREAKFAST WOMEN COOKS
OPEN 6:30 A. M. TO 12 M.

Cherry Blossom Chop Suey Parlor
ALL CHINESE SPECIALTIES
SPECIAL PLATE DINNERS
WE SERVE FAMILY STYLE
Any Order Put Up To Take Out
1311 Sartori Ave. Torrance

CHEF CAFE
(JUST REAL FOOD)
2119 Highway 101, LOMITA
Special
35c—Real Italian Spaghetti
Every Wednesday 35c
25c—Merchants Lunch
11 a. m. to 3 p. m. 25c
Hot Cakes at All Times
50c—Special Sunday Dinner—50c
Open 5 a. m. to 8 p. m.
Silex CAFE
NO BEER

FAMOUS CHILI SHOP
Delicious Homemade Chili
Famous Style Hamburgers
Cocktail Lounge
NEXT TO POST OFFICE
1437 Marcelina Torrance
LONE PINE INN
(CHICKEN DINNERS)
"Good Old Fashioned"
R-E-A-L Fried Chicken
Dinner (Lots of Hot Biscuits)
115 W. Sepulveda Cor. Main
Phone Wilmington 1555

LOMITA CAFE
Chester Reed, Prop.
MERCHANTS LUNCH
(Including soup and dessert) 35c
All Home Cooked Food
Open 5:30 a. m. to 12 p. m.
Daily and Sunday
21605 Narbonne, Lomita

POLLY'S CAFE
YOU CAN EAT AT HOME AWAY FROM HOME. IF YOU TRY OUR REAL HOME COOKING.
DAILY PLATE LUNCH 25c
DINNERS 35c
LARGE PIECE HOME MADE PIE 10c
Open 5:30 a. m. to 5 p. m.
1947 Highway 101 Lomita

Have a carefree vacation with your hair free from care. Consult our Beauty Aids. Classification 30.

Among our advertisers you will find many competent operators ready to give each patron the personal attention she may need.

What is yours? Oil reconditioning? Permanent waving or hair styling?

READ our want ads for Service and Savings

Torrance Herald Lomita News

Where to Eat —28

A-L-L-E-N'S
"Where Price & Quality Meet"
A VISIT TO ALLEN'S WILL BE A SURPRISE.
FOR LITTLE DID YOU REALIZE.
THAT AIR CONDITIONING CHANGES THE AIR.
EVERY TWO MINUTES, SO THERE-THERE (No Cover Charge)
WE SERVE BREAKFAST
Open Daily 7 a. m. to 12 Midnight
Sundays, 11 A. M. to 12 P. M.
1333 El Prado, Tor. 745

ATTEBERY'S
FAMILY STYLE DINNERS
CLUB & AFTERNOON PARTIES BY APPOINTMENT
Daily Hours
11 a. m. to 2 p. m.
5 p. m. to 8 p. m.
Sundays—Holidays
Noon to 3 p. m.
Two Salads—Two Vegetables
Homemade Jellies and Jams
SOUTHERN FRIED CHICKEN 55c
STEAMED CHICKEN 55c
BAKED HAM 65c
FROG LEGS (by appointment only) \$1.50
BE SURE TO REGISTER FOR A FREE DINNER LUNCH AND AFTERNOON S-P-E-C-I-A-L-S
ATTEBERY'S
RANCH DINNERS
Mrs. M. E. Attebery, Proprietor
4010 W. Sepulveda Blvd., Tor.
PHONE REDONDO 6502

CANARY INN
1219 EL PRADO TORRANCE
BUSINESS MEN'S COMPLETE LUNCH 35c
CHILD AND TANGLES
MALTS 10c
HOME MADE PIES
WE SERVE BREAKFAST WOMEN COOKS
OPEN 6:30 A. M. TO 12 M.

Cherry Blossom Chop Suey Parlor
ALL CHINESE SPECIALTIES
SPECIAL PLATE DINNERS
WE SERVE FAMILY STYLE
Any Order Put Up To Take Out
1311 Sartori Ave. Torrance

CHEF CAFE
(JUST REAL FOOD)
2119 Highway 101, LOMITA
Special
35c—Real Italian Spaghetti
Every Wednesday 35c
25c—Merchants Lunch
11 a. m. to 3 p. m. 25c
Hot Cakes at All Times
50c—Special Sunday Dinner—50c
Open 5 a. m. to 8 p. m.
Silex CAFE
NO BEER

FAMOUS CHILI SHOP
Delicious Homemade Chili
Famous Style Hamburgers
Cocktail Lounge
NEXT TO POST OFFICE
1437 Marcelina Torrance
LONE PINE INN
(CHICKEN DINNERS)
"Good Old Fashioned"
R-E-A-L Fried Chicken
Dinner (Lots of Hot Biscuits)
115 W. Sepulveda Cor. Main
Phone Wilmington 1555

LOMITA CAFE
Chester Reed, Prop.
MERCHANTS LUNCH
(Including soup and dessert) 35c
All Home Cooked Food
Open 5:30 a. m. to 12 p. m.
Daily and Sunday
21605 Narbonne, Lomita

POLLY'S CAFE
YOU CAN EAT AT HOME AWAY FROM HOME. IF YOU TRY OUR REAL HOME COOKING.
DAILY PLATE LUNCH 25c
DINNERS 35c
LARGE PIECE HOME MADE PIE 10c
Open 5:30 a. m. to 5 p. m.
1947 Highway 101 Lomita

Have a carefree vacation with your hair free from care. Consult our Beauty Aids. Classification 30.

Among our advertisers you will find many competent operators ready to give each patron the personal attention she may need.

What is yours? Oil reconditioning? Permanent waving or hair styling?

READ our want ads for Service and Savings

Torrance Herald Lomita News

Where to Eat —28

A-L-L-E-N'S
"Where Price & Quality Meet"
A VISIT TO ALLEN'S WILL BE A SURPRISE.
FOR LITTLE DID YOU REALIZE.
THAT AIR CONDITIONING CHANGES THE AIR.
EVERY TWO MINUTES, SO THERE-THERE (No Cover Charge)
WE SERVE BREAKFAST
Open Daily 7 a. m. to 12 Midnight
Sundays, 11 A. M. to 12 P. M.
1333 El Prado, Tor. 745

ATTEBERY'S
FAMILY STYLE DINNERS
CLUB & AFTERNOON PARTIES BY APPOINTMENT
Daily Hours
11 a. m. to 2 p. m.
5 p. m. to 8 p. m.
Sundays—Holidays
Noon to 3 p. m.
Two Salads—Two Vegetables
Homemade Jellies and Jams
SOUTHERN FRIED CHICKEN 55c
STEAMED CHICKEN 55c
BAKED HAM 65c
FROG LEGS (by appointment only) \$1.50
BE SURE TO REGISTER FOR A FREE DINNER LUNCH AND AFTERNOON S-P-E-C-I-A-L-S
ATTEBERY'S
RANCH DINNERS
Mrs. M. E. Attebery, Proprietor
4010 W. Sepulveda Blvd., Tor.
PHONE REDONDO 6502

CANARY INN
1219 EL PRADO TORRANCE
BUSINESS MEN'S COMPLETE LUNCH 35c
CHILD AND TANGLES
MALTS 10c
HOME MADE PIES
WE SERVE BREAKFAST WOMEN COOKS
OPEN 6:30 A. M. TO 12 M.

Cherry Blossom Chop Suey Parlor
ALL CHINESE SPECIALTIES
SPECIAL PLATE DINNERS
WE SERVE FAMILY STYLE
Any Order Put Up To Take Out
1311 Sartori Ave. Torrance

CHEF CAFE
(JUST REAL FOOD)
2119 Highway 101, LOMITA
Special
35c—Real Italian Spaghetti
Every Wednesday 35c
25c—Merchants Lunch
11 a. m. to 3 p. m. 25c
Hot Cakes at All Times
50c—Special Sunday Dinner—50c
Open 5 a. m. to 8 p. m.
Silex CAFE
NO BEER

FAMOUS CHILI SHOP
Delicious Homemade Chili
Famous Style Hamburgers
Cocktail Lounge
NEXT TO POST OFFICE
1437 Marcelina Torrance
LONE PINE INN
(CHICKEN DINNERS)
"Good Old Fashioned"
R-E-A-L Fried Chicken
Dinner (Lots of Hot Biscuits)
115 W. Sepulveda Cor. Main
Phone Wilmington 1555

LOMITA CAFE
Chester Reed, Prop.
MERCHANTS LUNCH
(Including soup and dessert) 35c
All Home Cooked Food
Open 5:30 a. m. to 12 p. m.
Daily and Sunday
21605 Narbonne, Lomita

POLLY'S CAFE
YOU CAN EAT AT HOME AWAY FROM HOME. IF YOU TRY OUR REAL HOME COOKING.
DAILY PLATE LUNCH 25c
DINNERS 35c
LARGE PIECE HOME MADE PIE 10c
Open 5:30 a. m. to 5 p. m.
1947 Highway 101 Lomita

Have a carefree vacation with your hair free from care. Consult our Beauty Aids. Classification 30.

Among our advertisers you will find many competent operators ready to give each patron the personal attention she may need.

What is yours? Oil reconditioning? Permanent waving or hair styling?

READ our want ads for Service and Savings

Torrance Herald Lomita News

Where to Eat —28

A-L-L-E-N'S
"Where Price & Quality Meet"
A VISIT TO ALLEN'S WILL BE A SURPRISE.
FOR LITTLE DID YOU REALIZE.
THAT AIR CONDITIONING CHANGES THE AIR.
EVERY TWO MINUTES, SO THERE-THERE (No Cover Charge)
WE SERVE BREAKFAST
Open Daily 7 a. m. to 12 Midnight
Sundays, 11 A. M. to 12 P. M.
1333 El Prado, Tor. 745

ATTEBERY'S
FAMILY STYLE DINNERS
CLUB & AFTERNOON PARTIES BY APPOINTMENT
Daily Hours
1