

## Trailer-Builders Feted at Shower Get Many Gifts

Last Thursday evening Mr. and Mrs. John Schreiber, who have been building a new house trailer, had a group of friends call to inspect it and after showing them around were invited to go over to the A. J. Fitzgerald house for a few minutes.

There they found a surprise planned for them. Tables were set in the patio, the fire was built and hot dogs and covered dishes ready for a feed. And then of course, the proper complement to an outdoor dinner, watermelon appeared.

A shower of gifts for the new house trailer were presented and the group spent the evening in games around the fireplace. Those present were Messrs. and Mesdames F. J. Frye, R. L. Lewis, Andrew Spaan, R. E. Hufford, F. P. Halling, M. L. Colvin, A. J. Fitzgerald, and John Schreiber, Jim Fitzgerald, Mervin Colvin, Bill Colvin, Wilma Schreiber, Arline Schreiber, Jacquelyn Hufford, Marilyn Hufford, Andrew Spaan, Jr., Marilyn Spaan, Ralph Lewis, Mallam Frye and Frances Frye.

## BOYLE BACKS MRS. COLDEN FOR CONGRESS

Former Assemblyman James J. Boyle, who was a candidate for Congress in this district two years ago, has pledged "100 percent support" for the present candidacy of Mrs. Clara N. Colden for the Democratic nomination to Congress in the same district. It was announced this week in a letter to Mrs. Colden, made public by Boyle, the former Assemblyman says:

"I am prompted to make this decision in the sincere belief that you are the best qualified person in the 17th Congressional district to succeed the incumbent — whose apparent inability to produce any tangible results for the benefit of the district is so well known as to need no further comment. Knowing of the constant and valuable assistance which you rendered to your late husband, Charles J. Colden, when he so ably represented this district for many years, I cannot but feel that you are better qualified to carry on his work than any other person."

"I pledge you my 100 percent support in your campaign for this important office," Boyle adds. Two years ago Boyle polled 9,383 votes for Congressional nomination at the primary.

Boyle, who represented the 66th Assembly district in the Legislature and is well known for his interest in behalf of the smaller independent merchants of the community, has accepted appointment as chairman of the Colden-for-Congress committee in that area, according to William J. Barber, campaign manager.

## Hauge Endorsed By Both Capital and Labor Organizations

Supervisor Oscar Hauge, who is a candidate to succeed himself as supervisor of the Fourth District, has been given the endorsement of both labor and business groups. This was demonstrated this week when the veteran railroaders of the National Brotherhood of Transportation Employees and the Manufacturers and Industries Committee of the Los Angeles Chamber of Commerce endorsed his candidacy, according to H. Kirby Shellaby, Hauge's campaign manager.

Shellaby reported that officers were being opened throughout the Fourth District, which includes Torrance. The local headquarters is located at 1405 1/2 Sartori avenue and is in charge of Mrs. Roxie Sleeth.

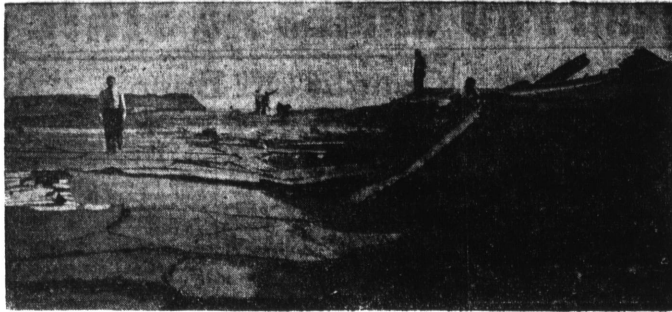
Mayor Tom McGuire is serving on the Hauge executive campaign committee. Other members of the Torrance committee are: Frank Kendall, Councilman J. E. Hitchcock, L. J. Gilmeister, and Councilman John V. Murray.

## Sales Tax Revenue Jumps During 1939-40

SACRAMENTO, (U.P.)—Revenue from the state's three percent sales tax was \$5,505,364 more during the last fiscal year than in the previous 12-month period, State Controller Harry B. Riley reported this week.

Receipts from the tax totaled \$38,772,361 for the 1939-40 fiscal year, which ended June 30, compared with \$37,710,157 for the 1938-39 fiscal year.

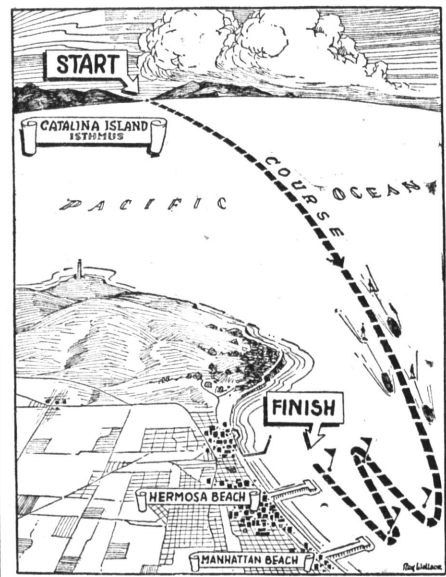
## PT. FERMIN BLUFF SKIDDING DOWN TO SEA



**DROPPING SEAWARD . . .** Slipping ever faster, a two-acre segment of the Pt. Fermin bluff today continued carrying a section of Paseo Del Mar seaward. Extent of the drop in recent days is shown above.

the white stripe on the uptilted piece of paving having once marked the center line of the thoroughfare. Crevasses of varying width and many feet deep, riddle this area which engineers expect to slowly fracture and drop into the sea 150 feet below.

## Famous Race Course Changed



The sixth annual running of the world famous Catalina Island, Manhattan, Hermosa Beach Aquaplane Race will start this year from the Isthmus next Sunday, August 4. This arrangement will send the channel riders and pilots over the open water to the Pacific as in the past, but this year new laps have been added to the course between the Hermosa and Manhattan Beach Piers, as shown above.

The new course has been described as one of the most dangerous ever attempted and the thousands of spectators who line the strand will be given thrills galore. More than thirty teams, among them four girls, will seek the world's title in the mad dash over the gruelling run.

## Huge Naval Expansion Program Means More Wages, Sales Here

California — and particularly the Harbor District — will benefit substantially in increased employment, wages and sales resulting from the new Navy expansion program involving construction of 92 combat vessels at a cost of \$1,140,000,000. Donald Renshaw, State Director for the Office of Government Reports, stated today that seven of these vessels will be built in California shipyards and much of the material used on construction will be purchased from California manufacturers and producers.

Renshaw advised that California manufacturers or producers of electric machinery, structural iron and steel, lumber, paint, insulating materials, blocks and rigging, navigating outfits, petroleum, glassware, asbestos, cement, aluminum castings, and sheets, bolts and nuts, and to a lesser extent, many other products used in modern construction.

"On the basis of Bureau of Labor Statistics estimates, the construction of 92 vessels will result in \$145,000,000 in wages to labor employed in the shipyards," Renshaw said, "but even more will be spent in wages in the mines and factories where the raw materials are produced, and in transportation."

**Plan Huge Purchases.** According to the Bureau of Labor Statistics estimate that 41 percent of total costs in private shipyards is spent for materials, more than \$475,000,000 will be expended for materials and manufactured products for naval expansion. Many of the 200 major industries producing materials used in ship construction, such as boilers, bolts, electrical equipment, hardware, tools, paints and navigation instruments, are located in California.

More than 540,000 man-hours of work in shipyards and more than 647,000 man-hours of work at mines, factories, and in transporting materials will be created by the new program, providing sufficient work to keep

Scores of people visited Point Fermin Sunday to see the crack which has widened alarmingly the past two weeks.

A desolate scene is the area about 40th and Bluff Place, once considered the most desirable residence property in San Pedro. Where once there were seawalls, beautiful gardens and homes there is nothing but a few parts of the foundations of houses.

All the houses have been moved away, their beautiful gardens overlooking the harbor have gone into the sea where the water is now constantly muddy. Great cracks and gullies fill 40th street. High steel fences keep the public back from the area.

The slide, whose cause has never been discovered, started in 1929. Time and again it has been reported that the sliding had ceased only to have it suddenly start again.

During the past three weeks it has changed its tactics. It is no longer sliding by inches but by feet, faster than the engineers can figure it.

Whether the bluff will slip gradually into the sea or whether a large slide will occur suddenly as it did in 1929, no one knows, but to guard against accidents all the walks from the park to the ocean and several hundred feet of the street have been fenced off and are guarded by police.

## Ephesians Sponsor Candidates Forums at High Schools

The Harbor Chapter Ephesians, who are sponsoring a series of meetings at which political candidates are invited to talk, announce their first meeting for Aug. 9 at San Pedro high school when 11 candidates for the 68th Assembly will speak.

Nick Zorotich, president of the chapter, will preside and Kiyoto Naoka, vice-president, who is a graduate of Narbonne, is publicity chairman. Each speaker will be allowed 12 minutes, six minutes to present his platform and six minutes to answer questions.

On Aug. 16 at Torrance high school assembly candidates will be given another chance to speak and on Aug. 21 candidates for the 17th Congressional District will be invited to speak at a public hearing. The public is invited to attend these meetings.

## KINGS CANYON POPULAR

Travel to California's new Kings Canyon National Park thus far during the 1940 travel year reflects an increase of 26 per cent over last year.

## CLASSIFIED ADVERTISING RATES AND INFORMATION

Your advertisement in this section reaches EVERY RESIDENT in Torrance, Lomita, Harbor City, Waverly, Rolling Hills and adjacent rural territory.

15 Word Minimum

	Cash	Chg.
15 Words, 1 Time	25c	35c
15 Words, 2 Times	45c	55c
15 Words, 3 Times	65c	75c
15 Words, 4 Times	85c	95c
1 inch—1, 2, 3, Times	50c	60c
per insertion	50c	60c
5c (10 each) for each additional 5 words or fraction thereof, per insertion.		

Cash rate allowed on all ads received by phone or mail if paid within 48 hours of date ordered.

Rates quoted are for consecutive insertions. Where change of copy is ordered, earned rate will be charged.

Ads may be cancelled after any insertion. Rate earned will be charged and balance refunded for unused space.

Not responsible for more than ONE incorrect insertion of any ad.

Longer term rates with space rates, furnished on request.

Closing time for all classified ads, Wednesday, 5:00 p. m.

## Cemeteries

BEFORE MAKING FINAL ARRANGEMENTS SEE

## PACIFIC CREST

CEMETERY MAUSOLEUM  
CREMATORY COLUMBARIUM  
COMPANION GRAVE VAULTS

182nd St. & Inglewood Ave.  
Redondo 2338

## Lost and Found

LOST—Wednesday, July 24th, 2 keys on chain downtown. Box X. Torrance Herald.

LOST—Gray and white kitten, 1600 24th St. Finder rewarded.

## Professional Services

Insure  
T-O-D-A-Y  
TOMORROW MAY BE TOO LATE!  
Howard G. Locke  
1405 Marcella, Tor. 135M

INSURANCE, General—  
SPECIALIZING IN—  
AUTOMOBILE  
FIRE—FURS—  
PLATE GLASS—  
Ask for quotations on other lines.  
WALLACE H. GILBERT  
1631 COTA AVE. TOR. 420

REAL ESTATE—RENTALS  
INSURANCE  
L. J. Hunter  
NOTARY PUBLIC  
2055 W. 24th St., Lomita 351

Where to Eat

A-L-L-E-N-S  
"Where Price & Quality Meet"

THE HOLE IN THE DONUT LOOKS FUNNY  
BUT TO US IT MEANS MONEY  
WE FILL 'EM UP WITH FROSTY MALT  
AND NO ONE FINDS A FAULT  
10c PLEASE

"WE EVEN SERVE EM FOR BREAKFAST"

Open Daily 7 a. m. 'til 12 Midnight  
Sundays, 11 A. M. to 12 P. M.  
1233 El Prado, Tor. 745

ATTEBERY'S  
Family Style  
DINNERS  
CLUB & AFTERNOON PARTIES BY APPOINTMENT

Daily Hours  
11 a. m. to 2 p. m.  
5 p. m. to 8 p. m.  
Sundays—Holidays  
Noon to 3 p. m.

Two Salads—Two Vegetables  
Homemade Jells and Jams.

SOUTHERN FRIED  
CHICKEN  
STEWED CHICKEN  
BROILED CHICKEN  
FROG LEGS (by appointment only) \$1.50

—Buttermilk Biscuits  
—Potatoes and Gravy  
—Cake or Jello with whipped cream  
—Milk, Tea or Coffee

BE SURE TO REGISTER FOR A FREE DINNER  
LUNCH AND AFTERNOON  
S-P-E-C-I-A-L-S

Fried Chicken and Potato Salad  
Fried Chicken with French Fries  
BREAD & BUTTER INCLUDED

ATTEBERY'S  
RANCH DINNER HOUSE  
Mrs. M. E. Attebery, Proprietor  
4010 W. Sepulveda Blvd. Tor.  
PHONE PEDONDO 4802

Cherry Blossom  
Chop Suey Parlor

ALL CHINESE SPECIALTIES  
SPECIAL PLATE DINNERS  
WE SERVE FAMILY STYLE  
Any Order Put Up to Take Out  
1311 Sartori Ave. Torrance

CHEF CAFE  
(JUST REAL FOOD)  
219 HIWAY 101, LOMITA

35c—Real Italian Spaghetti Every Wednesday . . . 35c  
75c—Merchants Lunch 11 a. m.—5 p. m. . . 75c  
Hot Cakes at All Times  
50c—Special Sunday Dinner—50c  
Open 5 a. m. to 5 p. m.  
SILK COFFEE  
NO BEER

Classified  
Ads  
15 Words 25c

Where to Eat

FAMOUS CHILI SHOP  
Delicious Homemade Chili  
Famous Style Hamburgers  
Cocktail Lounge  
NEXT TO POST OFFICE  
1487 Marcella Torrance

LOVE PINE INN  
(CHICKEN DINNERS)  
"Good Old Fashioned"  
R-E-A-L Fried Chicken  
Lots of Hot Biscuits  
Dinner (incl. Hot Biscuits)  
115 W. Sepulveda Cor. Main  
Phone WARRINNE, LOM. 1855

LOMITA CAFE  
Chester Reed, Prop.  
MERCHANTS LUNCH  
25c  
(Including soup and dessert)  
All Home Cooked Food  
Open 7:15 A. M. to 12 P. M.  
Daily and Sunday  
24505 Normandie, Lomita

ROITAN CAFE  
(Under Roit Tan Hotel)  
Anna Mikelson, Proprietor  
Business Men's Lunch, 55c & 40c  
Breakfast Served from 6 a. m. SPECIAL SUNDAY  
DINNER  
We Close 8 p. m.  
1213 El Prado Torrance

TATE'S CAFE  
Daily Meals . . . 25c  
Chili . . . Short Orders  
Breakfast 7 A. M. to 11 A. M.  
"A Hearty Meal Reasonably Priced"  
We Close 12 P. M.  
1667 CARSON ST., TORRANCE

Welcome Inn  
Let Us Serve You a Real  
Sunday Chicken Dinner . . . 65c  
Daily Plate Lunches . . . 55c  
Dinner . . . 85c  
Mary's Hamburger Deluxe . . . 10c  
Beer, Soft Drinks—Close 2 a. m.  
2063 Torrance Blvd., Tor.

What to Eat

For Guaranteed FRESH FISH DAILY Try  
SHORTY'S FISH MKT.  
1727 101 Hiway, Lomita

Meadow Park Dairy  
22,601 Hawthorne Blvd., Redondo 5129  
FRESH MILK AT THE DAIRY . . . 35c GAL.

Barbers Classification

## Where to Eat

FAMOUS CHILI SHOP  
Delicious Homemade Chili  
Famous Style Hamburgers  
Cocktail Lounge  
NEXT TO POST OFFICE  
1487 Marcella Torrance

LOVE PINE INN  
(CHICKEN DINNERS)  
"Good Old Fashioned"  
R-E-A-L Fried Chicken  
Lots of Hot Biscuits  
Dinner (incl. Hot Biscuits)  
115 W. Sepulveda Cor. Main  
Phone WARRINNE, LOM. 1855

LOMITA CAFE  
Chester Reed, Prop.  
MERCHANTS LUNCH  
25c  
(Including soup and dessert)  
All Home Cooked Food  
Open 7:15 A. M. to 12 P. M.  
Daily and Sunday  
24505 Normandie, Lomita

ROITAN CAFE  
(Under Roit Tan Hotel)  
Anna Mikelson, Proprietor  
Business Men's Lunch, 55c & 40c  
Breakfast Served from 6 a. m. SPECIAL SUNDAY  
DINNER  
We Close 8 p. m.  
1213 El Prado Torrance

TATE'S CAFE  
Daily Meals . . . 25c  
Chili . . . Short Orders  
Breakfast 7 A. M. to 11 A. M.  
"A Hearty Meal Reasonably Priced"  
We Close 12 P. M.  
1667 CARSON ST., TORRANCE

Welcome Inn  
Let Us Serve You a Real  
Sunday Chicken Dinner . . . 65c  
Daily Plate Lunches . . . 55c  
Dinner . . . 85c  
Mary's Hamburger Deluxe . . . 10c  
Beer, Soft Drinks—Close 2 a. m.  
2063 Torrance Blvd., Tor.

What to Eat

For Guaranteed FRESH FISH DAILY Try  
SHORTY'S FISH MKT.  
1727 101 Hiway, Lomita

Meadow Park Dairy  
22,601 Hawthorne Blvd., Redondo 5129  
FRESH MILK AT THE DAIRY . . . 35c GAL.

Barbers Classification

RINK'S Barber Shop  
1811 CARRILLO—TOR.

Beauty Aids

American Beauty SHOP  
1511 Carrillo Ave., Tor. 323

"If your hair is not becoming to you—you had better be coming to us!"  
Machineless Permanent . . . \$2.50  
Wave . . . \$3.50  
A Foundation Hair Style and Oil Permanent Wave  
Special at . . . \$1.50  
Shampoo and Hairdress (the proper way to care for a permanent wave) . . . 50c  
Eula Thomas, Mgr., 2 Operators

AVON PRODUCTS  
(FOR 2 TYPES OF SKIN)  
Cleansing Cream Reg. 75c  
Special . . . 50c  
Night Cream Reg. 75c  
Special . . . 50c  
Foundation Cream Reg. 52c  
Special . . . 35c  
Finishing Cream Reg. 52c  
Special . . . 35c  
Manicuring Articles  
Antiseptics  
SETS IN ATTRACTIVE BOXES  
SUPER SPECIAL  
MARQUETTE TONIC WATER  
Is Yours with Good Order and 20c  
MRS. MARSHALL  
2234 So. Normandie  
Phone TORRANCE 109

Betty's Beauty Shop  
Permanent Waves to Suit All  
Textures of Hair.  
Shampoo & Finger Wave . . . 50c  
Revlon's Manicures . . . 50c  
—CHINARD COSMETICS—  
2205 Torrance Blvd., Tor. 291

CHARLOTTE'S BEAUTY NOOK  
Permanent Waves  
\$2.00—\$3.00—\$5.00  
Hair Styling  
GENERAL BEAUTY WORK  
24051 Neece Ave., Waverly

Ellen's Beauty Salon  
21,840 So. Main St., Keystone  
Phone WILMINGTON 8720-J-4  
Shampoo & Finger Wave . . . 50c  
Oil Permanent . . . \$2.50; 15; \$6.50  
Lolox Shampoo Trim  
Including Fingerwave . . . \$2.50

Grand Beauty Salon  
153 CHAVENS, TORRANCE 1063  
SPECIAL 2 WEEKS ONLY  
REGULAR \$5.00 PERMANENT  
Including Haircut, Shampoo  
and Wave . . . \$2.50  
Eyebrow Arching . . . 35c

JEAN'S SPECIALTY SHOP  
Permanent Waves  
Machineless . . . \$3 and \$5  
"WE USE SOFT WATER"  
We Specialize in Hair Styling  
2227 Torrance Blvd., Tor. 290

Classified Ads  
15 Words 25c

Beauty Aids

Marge's Beauty Shop  
1803 Carrillo, Tor. 865.  
Specializing in  
Permanent Waving  
Oil . . . \$1.95 & \$2.50  
Dunat . . . \$2.50  
Eugene . . . \$5.00  
Marjorie Bayless, owner and operator

Marcella's Beauty SALON  
(Formerly Harvey's)  
A Special Machineless  
Wave . . . \$3.95  
Special Wave for Baby Fine Hair—A Guaranteed Permanent Wave . . . \$5.95  
24605 NARRONNE, LOM. 209

PERSONALITY BEAUTY SHOP  
BE HAIR CARE FREE  
IN ONE OF OUR DESIGNED TO ORDER COIFFURES  
Personality Hair Styling  
2166 Hiway 101—Lomita 590

Viva's Beauty Salon  
1703 25th St., Harbor City  
Phone Lomita 487  
Helene Curtis  
Remote Control Permanent Wave . . . \$4.00 & \$5.00  
COOL! COMFORTABLE! QUICK!

Health—D.C. Way  
Dr. Katherine F. Siekmann, D.C., Ph.D.  
Graduate of Carver University, Darling & Baker, and Post-Graduate of Palmer College and Western University.  
25 YEARS' EXPERIENCE  
The Chiropractor's Mission  
"Is one of service"  
ELECTROMAE TREATMENTS  
"MAKE HEALTH CONTAGIOUS"

DAVID S. CLARK  
"NATURE'S ASSISTANT"  
SWEDISH MASSAGE  
COLONIC IRRIGATION  
ELECTRIC SWEAT BATHS  
ELECTRIC THERAPY  
Hermosa Office—Redondo 6781  
1216 El Prado, Torrance 375

FEELING BELOW PAR?  
LET ME GIVE YOU THAT "JOY OF LIVING FEELING."  
Under the expert treatments of Dr. Jones many patients find a beneficial and pleasant way to gain and preserve their health. These treatments are especially adapted for the treatment of muscular soreness, and directly attack nervousness due to overwork and strain. They also tend to mould the otherwise neglected figure into the "perfect form."

MAGNETIC SAND BATHS  
HOT STEAM BATHS  
SCIENTIFIC MASSAGE  
REDONDO HEALTH BATHS  
In Redondo Plunge—Redondo 3801  
Open 10 a. m. to 10 p. m.  
Same Location 3 Years

Painting, Papering—38m  
PAINTING, Paperhanging wanted  
T. J. Wilson, 2550 25th St., or Gen. Del. Torrance.

PAINTING AND DECORATING  
R. B. LEEDS, 2863 Maricopa Place, Phone Torrance 232.

Plumbing  
David Jacobs  
"YOUR PLUMBER"  
—We Never Lose Time—  
We have our tools with us.  
STOP A THICK ANYWHERE  
1824 Carrillo Ave., Tor. 58

Repairing, Cleaning—42  
Vacation Clothes!  
Get your Vacation Clothes cleaned for your trip thru our Oilless Process. Minor repairs, FREE. JOHNSON'S Cleaning & Storage Service. Call for and deliver, FREE!  
212 W. Lomita Blvd., Lomita 450.

Nursery and Seeds—43  
GARDEN PLANTS  
Bedding Plants, 3 doz. . . 25  
Antlers, 3 doz. . . 25  
Ruffled Petals, 3 doz. . . 25  
Giant Zinnias, 3 doz. . . 25  
Dahlia Flower  
Zinnias . . . \$1.00-60c  
Giant Antlers . . . \$1.00-60c  
MONETA NURSERY  
17029 S. Western, Menlo 41223

Hillcrest Nursery  
San Pedro 6887-W  
BEDDING PLANTS, ROSES, FLOWERS, TREES, SHRUBS, VINES, FRUIT TREES  
25th & Normandie, Harbor City

## Beauty Aids

Marge's Beauty Shop  
1803 Carrillo, Tor. 865.  
Specializing in  
Permanent Waving  
Oil . . . \$1.95 & \$2.50  
Dunat . . . \$2.50  
Eugene . . . \$5.00  
Marjorie Bayless, owner and operator

Marcella's Beauty SALON  
(Formerly Harvey's)  
A Special Machineless  
Wave . . . \$3.95  
Special Wave for Baby Fine Hair—A Guaranteed Permanent Wave . . . \$5.95  
24605 NARRONNE, LOM. 209

PERSONALITY BEAUTY SHOP  
BE HAIR CARE FREE  
IN ONE OF OUR DESIGNED TO ORDER COIFFURES  
Personality Hair Styling  
2166 Hiway 101—Lomita 590

Viva's Beauty Salon  
1703 25th St., Harbor City  
Phone Lomita 487  
Helene Curtis  
Remote Control Permanent Wave . . . \$4.00 & \$5.00  
COOL! COMFORTABLE! QUICK!

Health—D.C. Way  
Dr. Katherine F. Siekmann, D.C., Ph.D.  
Graduate of Carver University, Darling & Baker, and Post-Graduate of Palmer College and Western University.  
25 YEARS' EXPERIENCE  
The Chiropractor's Mission  
"Is one of service"  
ELECTROMAE TREATMENTS  
"MAKE HEALTH CONTAGIOUS"

DAVID S. CLARK  
"NATURE'S ASSISTANT"  
SWEDISH MASSAGE  
COLONIC IRRIGATION  
ELECTRIC SWEAT BATHS  
ELECTRIC THERAPY  
Hermosa Office—Redondo 6781  
1216 El Prado, Torrance 375

FEELING BELOW PAR?  
LET ME GIVE YOU THAT "JOY OF LIVING FEELING."  
Under the expert treatments of Dr. Jones many patients find a beneficial and pleasant way to gain and preserve their health. These treatments are especially adapted for the treatment of muscular soreness, and directly attack nervousness due to overwork and strain. They also tend to mould the otherwise neglected figure into the "perfect form."

MAGNETIC SAND BATHS  
HOT STEAM BATHS  
SCIENTIFIC MASSAGE  
REDONDO HEALTH BATHS  
In Redondo Plunge—Redondo 3801  
Open 10 a. m. to 10 p. m.  
Same Location 3 Years

Painting, Papering—38m  
PAINTING, Paperhanging wanted  
T. J. Wilson, 2550 25th St., or Gen. Del. Torrance.

PAINTING AND DECORATING  
R. B. LEEDS, 2863 Maricopa Place, Phone Torrance 232.

Plumbing  
David Jacobs  
"YOUR PLUMBER"  
—We Never Lose Time—  
We have our tools with us.  
STOP A THICK ANYWHERE  
1824 Carrillo Ave., Tor. 58

Repairing, Cleaning—42  
Vacation Clothes!  
Get your Vacation Clothes cleaned for your trip thru our Oilless Process. Minor repairs, FREE. JOHNSON'S Cleaning & Storage Service. Call for and deliver, FREE!