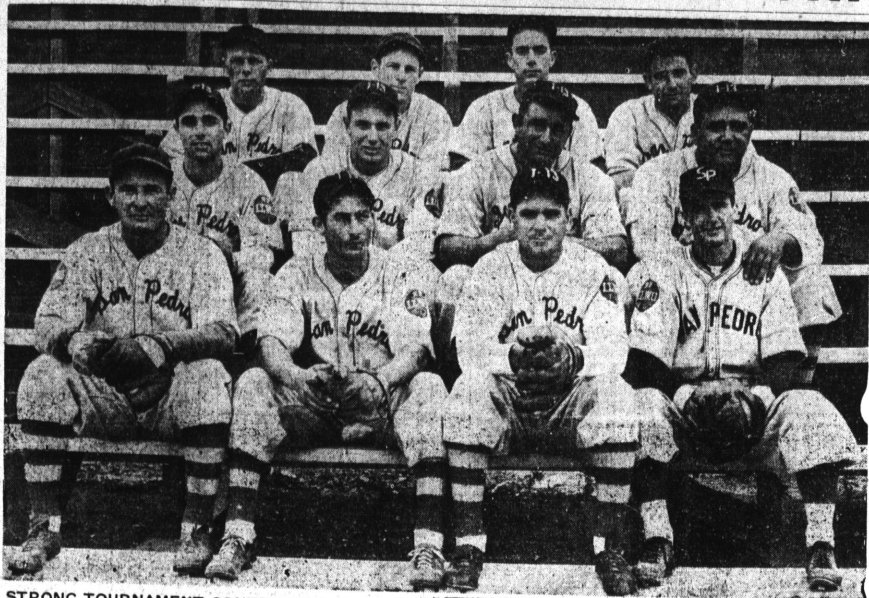


16 TEAMS AWAIT OPENING OF STATE BALL TOURNEY IN TORRANCE JULY 6



STRONG TOURNAMENT CONTENDERS . . . The San Pedro Longshoremen, strengthened by the recent addition of new players, will be one of the strongest entries in the California State Semi-Pro Baseball Tournament which starts Saturday, July 6, at the Torrance city park diamond. The Dock team holds the home-team lead of the Southwestern league and has added two new hurlers for the tourney. Tiny Police is manager of the squad.

Speedboat Relay Race, New Thriller, Will Be Tried at Long Beach

With the hope of appeasing the speedboat fans' appetite for new thrills, the Southern California Outboard Association will highlight its speedboat regatta to be held at Long Beach Sunday, June 30, over the Marine Stadium course, with a speedboat relay race. Records of the sport in Southern California fail to reveal a previous attempt to stage such a hazardous stunt.

Six teams of six boats each will compete in the relay. The rules, as formulated by Commodore Hal Coombes of the sponsoring club, require that all starts be standing starts, which will necessitate each driver cranking his "putt-putt" before he can make his circuit of the treble course. In place of the baton, each driver will pass to his teammate his safety helmet which must be securely buckled on his head before the driver can wind up his motor and run his lap.

Stewart Sets New High Jump Record In Big L. A. Meet

Bill Stewart, formerly of Torrance high school, now holds a Los Angeles Industrial track and field meet record of 6 ft. 7 ins. in the high jump. He barely missed a leap of 6 ft. 10½ ins. for a new world's record.

The prodigious leaping featured the annual meet held last Sunday at Rancho Stadium. Bill Smith of Belmont and Bill Wakefield of Pacific Gas Radiator tied for second at 6 ft. 6 ins. Earle Meadows vaulted 14 ft. 2 ins.

HIGHWAY MEETING
A regular meeting of the Southwest Highways Association will be held tonight following dinner at Kelly's Cafe in Manhattan Beach at 6:30 o'clock. Engineer E. E. East of the Automobile Club will be the principal speaker.

PIONEER LUMBER COMPANY
GOOD PAINT
\$1.59 Gallon

2x3's 2x4's 1x6's
AT LOWEST PRICES!
1826 213th St. Ph. 129
Torrance, Calif.
1 Block East of P. E. Depot
on 213th St. AL GREINER, Manager

Port Merchants Blast Dr. Ross

Putting over eight runs on three hits in the opening inning, the Wilmington Merchants walloped the Dr. Ross nine, 14 to 5, at the port field last Sunday.

Archie Petrovich hurled steady ball for the winners, allowing nine hits but keeping them well spaced. The Rossmen were charged with 10 errors. Both teams are entered in the California Semi-Pro Baseball Tournament which opens at the Torrance City park diamond Saturday, July 6.

Wilmington, with only one defeat in the Southwestern League, will face Pacific Construction next Sunday and hopes to hold its spot in the league standings.

Steel Golf Tourney Winners Announced

Winners of the semi-annual Columbia Steel plant employees' golf tournament, held at Potrero Country club Sunday, were announced today. They were: Low gross—Norman Daugherty, first; Harry Craft, second. Low net—Dr. W. J. Harrison, first; Oscar Olson and George Arnett, tied for second.

Blind bogey—Harry Taylor, first; John Daugherty, second; Howell Turner, Mel Howard, Von Berger and Ed Ahlstrom, tied for third; Louie Gates, Wilbur Norman and John Armstrong, tied for fourth. The merchandise prizes will be distributed next week.

State Picnic-Reunions

ILLINOIS . . . All former residents of Illinois are invited to attend the picnic-reunion to be held all day Saturday, July 6, in Sycamore Grove Park, Los Angeles. A program will start at 2 o'clock.

Whelchel of Lomita Goes to Arizona for Place on Ball Club

Charlie Whelchel of Lomita, who recently made the All-Southern California J. C. baseball team, has gone to Phoenix to join the Thunderbird semi-pro club of that city and his former teammate, Ambrose Palica, with whom he played while in Narbonne high school.

Both Whelchel and Palica were chosen for Marine league mythical teams and Palica made quite a reputation in semi-pro circles in the Harbor area before he went to Arizona. According to sport followers in this area, Ambrose gave an option on his services to one L. A. manager who held out for \$300 when major league scouts showed an interest in him.

Whelchel, it is said, wanted to play for the San Pedro Longshoremen but needed employment. Phoenix found it for him.

Longshoremen Beat Indians 5 to 2

A fair-sized crowd watched the San Pedro Longshoremen defeat the Torrance-Lomita Indians 5 to 2 Tuesday night at the Torrance city park diamond. Papke, pitching for the Indians, was touched for seven hits. Lyons caught for the home club. Gendreau and Rodriguez performed the pitching duties for the Longshoremen, allowing five hits. Mele caught for the Port club.

ROBERTS LIQUOR STORES

Roxwell Bond
STRAIGHT BOURBON WHISKEY

PINT 89¢
EMPIRE DRY GIN

FIFTH GALLON 75¢

AMBASSADOR Imported Scotch Whiskey 10 years old \$2.19 FIFTH

Gold Chest Rum FULL PINT 69¢

ROSEMONT WHISKEY FULL PINT 59¢

ROBERTS FAMOUS

Northern Calif. Bulk Wines

PORT, SHERRY, MUSCATEL, TOKAY, ANGELICA

QUART GAL. 25¢ 90¢

SPECIALS FRIDAY and SATURDAY, JUNE 28, 29

9 Games to Be Played Weekly Until July 28

Nearly all arrangements for the opening of the fifth annual California State Semi-Pro Baseball Tournament—just nine days off—were complete today after Dale Riley, state baseball "czar" in charge of the games, had announced the first two rounds of play for the 16 team entries.

The series for the state championship, a large gold trophy and \$500 towards the winning club's traveling expenses to Wichita, Kan., where the national finals will be held in August, will get under way Saturday afternoon, July 6, at the Torrance City park ball diamond.

Honor of opening the tourney, second to be held in Torrance, goes to the Hartwell Aviation nine and the Long Beach Ellbees, both strong clubs. The first evening game, to be played that night—Saturday, July 6—will be staged by Chet Ralph's Chevrolet and the Long Beach Harbor Refinery club.

Plan Opening Ceremony
The series will continue with afternoon games Saturdays and Sundays and contests every night in the week until July 28 when either 30 or 31 games will have been played and a championship team emerges, Riley said after drafting his schedule.

All indications point to even larger crowds this year than turned out for the 1939 Tournament in Torrance. Single admissions to the games will be 25 cents for adults with children being admitted free. Special tickets entitling purchasers to see any five games for \$1 went on sale this week in all Torrance barber shops and drug stores and at the Chamber of Commerce, sponsoring organization for the tourney.

An impressive opening ceremony is planned for 2 o'clock Saturday afternoon, July 6, and the umpires will begin the first game promptly at 2:15 p. m. Details of the opening program will not be announced until next week.

Team Entries Listed
Teams entered in the 1940 series are regarded by Riley as the strongest competition ever to seek a state championship and the right to play the title holders from the other 47 states in the National Semi-Pro Baseball Congress games in Wichita.

The California contenders are: Hartwell Aviation, Long Beach Ellbees, Chet Ralph's Chevrolet, Long Beach Harbor Refinery, Gaffers & Sattler, Torrance-Lomita Indians, Lockheed Aircraft, Santa Monica Trainmen, Dr. Ross Dog Food, Pepsi-Cola, North American Aviation, San

HERE'S SCHEDULE OF FIRST ROUNDS OF BALL TOURNEY

The schedule for the first two rounds of the 1940 California Semi-Pro Baseball Tournament which gets under way at the Torrance City park diamond Saturday afternoon, July 6, is as follows:

Saturday, July 6, 2:15 p. m.—Hartwell Aviation vs. Long Beach Ellbees; at 8:15 p. m.—Chet Ralph's Chevrolet vs. Long Beach Harbor Refinery.

Sunday, July 7, 2:15 p. m.—Gaffers & Sattler vs. North American Aviation; at 8:15 p. m.—Torrance-Lomita Indians vs. Santa Monica Trainmen.

Monday, July 8, 8:15 p. m.—Dr. Ross Dog Food vs. Pepsi-Cola.

Tuesday, July 9, 8:15 p. m.—Lockheed Aircraft vs. San Pedro Longshoremen.

Wednesday, July 10, 8:15 p. m.—Wilmington Merchants vs. Torrance-Lomita Indians.

Thursday, July 11, 8:15 p. m.—Bank of America vs. Standard Oil Refinery.

SECOND ROUND
Friday, July 12, 8:15 p. m.—Lockheed Aircraft vs. Santa Monica Trainmen.

Saturday, July 13, 2:15 p. m.—Pismo Beach Merchants vs. Hartwell Aviation; at 8:15 p. m.—Long Beach Ellbees vs. Long Beach Harbor Refinery.

Sunday, July 14, 2:15 p. m.—Pismo Beach Merchants vs. Standard Oil Refinery; at 8:15 p. m.—Dr. Ross Dog Food vs. Wilmington Merchants.

Monday, July 15, 8:15 p. m.—Pepsi-Cola vs. Chet Ralph's Chevrolet.

Tuesday, July 16, 8:15 p. m.—San Pedro Longshoremen vs. Gaffers & Sattler.

Wednesday, July 17, 8:15 p. m.—Bank of America vs. North American Aviation.

The world's most powerful microscopes magnify up to 100,000 times, and use electron instead of lenses.

Pedro Longshoremen, Wilmington Merchants, Bank of America, Standard Oil Refinery of El Segundo and the Pismo Beach Merchants.

SMART SPECTATOR



Personable Rita Johnson, M-G-M star, is one of the best-dressed women to frequent The Tuff Club at Hollywood Park. She is shown wearing a sheer wool suit in beige and chocolate brown, with the colors repeated in her straw-crowned, felt-brimmed hat. Sables complete her costume. Monday, July 1, has been set aside as American Red Cross Day at the Inglewood plant, and socialites and cinema celebrities will be on hand to help this great cause.

Sunday and July 4 Games Here Announced

Next Sunday another double bill is scheduled at the Torrance City park diamond. Starting at 1 o'clock the May Company will play the Torrance-Lomita Indians and the nightcap will be staged by the L. A. Torpedoes, a Negro club, and the Indian Juniors. On July 4, at 2 o'clock, the local Junior team will play the Hartwell Aviation nine at the park diamond.

Supervisors Slash Budget to Get Tax Rate Lower

COUNTY TAX RATE CUT
After making two cuts totaling \$118,000, the board of supervisors yesterday adopted the Los Angeles county final budget for 1940-41, calling for expenditures of \$82,117,047. Of the amount, \$35,681,189 is to be raised by tax levy on a tax rate one cent lower than the \$1.4973 for the current fiscal year.

Eliminating the proposed \$70,000 expenditures for a county band and several other large items from the preliminary budget, the board of supervisors Tuesday reduced the county tax rate for the year to \$1.4873 per \$100 assessed valuation. A rate cut of from 3 to 5 cents below last year's figure was indicated.

The total appropriation is expected to approximate \$79,000,000, when all calculations are completed. Through a change in handling the county's fire insurance, a plan advanced by Supervisor Oscar Haug, the county saved more than \$40,000.

This new plan of handling fire insurance added to savings resulting from a new system of surety bonds, forgery bonds, burglary and theft insurance amounted to a total saving of \$63,900, according to Col. Wayne Allen, the chief county Administrative officer.

Friberg Joins Force as Relief Officer

Karl Friberg, former Columbia Steel Company sandblaster, has been added to the Torrance police department for summer vacation relief duty while the regular officers are taking their annual holidays. He is married and lives at 809 Sartori avenue.

The new officer placed fourth in the recent civil service examination and is the second new man to be added to the force this month.

Want Ads 25c

IT'S HERE!

The Original BUDGET PAY PLAN

on the famous
GOODRICH SILVERTOWN TIRES
GOODRICH BATTERIES

Now everyone can enjoy safe, trouble-free driving on Goodrich Silvertowns with the amazing new Life-Saver Tread or a powerful Goodrich Battery. These first-quality products can be purchased without paying a penny down and on your own easy terms.

QUICK FRIENDLY CREDIT TO EVERYONE

We mean what we say! Everyone—regardless of income—whether his car is entirely paid for or not, can use this modern way to buy. We fit our plan to suit your pocketbook.

SET YOUR OWN TERMS

NO RED TAPE ABOUT CREDIT
No sir! Just show us your license identification and tell us how you can pay. That's all. No third degree questioning or embarrassment here.

NO DELAYS OR WAITING
No Sir! It only takes a few minutes to make your customers complete their purchase and our own requirements in less than 15 minutes. Your purchase is installed on-the-spot.

QUICK SERVICE
Yes sir! 9 out of every 10 customers complete their purchase and our own requirements in less than 15 minutes. Your purchase is installed on-the-spot.

NO MONEY DOWN

Cravens and Marcelina

Harvel's

Torrance Phone 168

LAST DAYS
We're **SLASHING** Prices

There are still dozens of items left—some of all sizes and colors still remain. JUST WHAT YOU WANT AND NEED IS PROBABLY STILL ON OUR SHELVES. Stock up at these deep cut prices for yourself—for gifts and all the family.

But Hurry! It's Sandy & Scotty's Last Days!

SANDY & SCOTTY
1307 EL PRADO TORRANCE