

## Don Miller Takes Over Rio Grande Service Station



DON MILLER

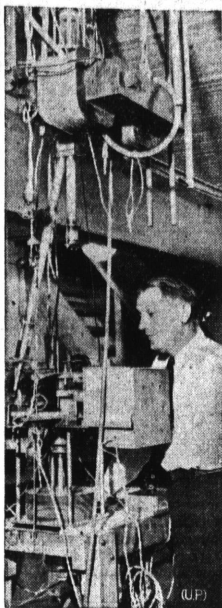
... Independent and likes it

Immediately following his resignation as manager of one of this city's auto supply and service stations, Don Miller this week took over the operation of the Rio Grande service station at the corner of Cravens avenue and Torrance boulevard. The well-known young business man declared he would operate his new venture as an independent station, stressing personal service and the high-grade motor fuel and lubrication products of the Rio Grande Oil Company.

"I have always wanted to run my own business and now that I've started, I must say I'm more than satisfied with the outlook," he said. In addition to gasoline and lubrication products, "Don's Service" is handling tires and many auto accessories.

Miller has been a Torrance resident for the past four years. With his wife and young son he lives at 2010 Arlington avenue. He has announced a formal opening of his service station for Saturday.

## COUNTY TOPS NATION AS CENTER OF OIL REFINING



RESEARCHER... Dr. C. C.

Lauritsen of Pasadena's California Institute of Technology, who stands beside important new atom smasher which changes element fluorine into oxygen 2,500 times a day.

Read Our Want Ads!

Los Angeles county holds a high national ranking as a center of oil refining, being at the top of 33 major industrial areas of the nation, according to the United States census bureau reports. Oil refining is the leading manufacturing industry of the county and of the state, in terms of value of product.

The county also ranks high in retail sales of gasoline and oil, due in part to climatic conditions which lead to year-round full use of automobiles. The large tourist business, in both summer and winter, also adds materially to such sales, according to the industrial division of the Los Angeles chamber of commerce.

One refinery in the Los Angeles area has a daily capacity of 100,000 barrels, on of 60,000, two of more than 50,000 each and two of more than 35,000 barrels each. The immediate Los Angeles area is the petroleum producing center of the Pacific southwest, and 98 percent of the state's production in accounted for by Southern California fields.

The county's growth in oil production has led to the establishment here of plants making oil tools, there being more than 20 such large factories. Large quantities of this equipment are shipped to other oil fields and some of it is exported, the chamber said.

Marine transportation of the county's petroleum products is an important part of the harbor business. Bulk shipments last year amounted to more than 70,000,000, as against 63,000,000 the year before. This has necessitated construction of large marine terminal storage reserves and pipelines to them.

### MARCH FIELD CLOSED

March Field near Riverside is now closed to the public, having discontinued open house hours for civilian sightseers. This ruling will be in effect "until further notice," states the report.

House guests at the L. C. Burger home, 1104 Cedar street, this week are Mr. and Mrs. Hollis Miller of Oakland.

Mr. and Mrs. H. L. Bodley spent the weekend at Headlee's camp, San Gabriel river.



SUMMER teen-agers demand crispness and freshness in their frocks while acknowledging a need for budgeting. The three dresses above are the answer offered in the June Harper's Bazaar. On the left is a white pique dress, very fitted in for a slim waist, with shiny gold buttons down the back and on big pockets. Center is a backless shoulder-strap dress of bright red Everlast pique in a prim early-American print. There is a Basque jacket of glazed chintz in the same pattern. On the right is an apron pinafore of red and white imported checked gingham, with ruffles on the bib and a white dimity blouse. All are washable and budget-easy.

### STREAMLINED AQUABELLES RIDE STREAMLINER



These beautiful streamlined aquabelles from Billy Rose's Aquacade, swimming and diving extravaganza at the Golden Gate Exposition, found their counterpart in this streamlined Greyhound Super-Coach. The big handsome swimmer in the center is Johnny "Tarzan" Weismuller, star of the show, flanked by the sensational Hopkins twins. On their left is Morton Downey, singing star of Aquacade, and Gertrude Ederle, of English Channel fame. From all over America, people are traveling by Greyhound to see this great spectacle on Treasure Island.



BUT YOU ARE YOUNG by Josephine Lawrence: This author always sets herself an interesting problem as readers who enjoyed "If I Have Four Apples" will recall. Here she is concerned with the clash of her young heroine's desire to marry and lead her own life and family duty. Kelsie Wright is a symbol of family loyalty—generous, amiable and sympathetic in a credible family group, partly selfish, partly hard working. Kelsie, as she admits, is the goat. After suffering with Kelsie thru her unselfishness, the reader feels relief when she finally decides to lead her own life and walks out. This is an excellent recording of what people do and say: a study of economic problems well observed and done with more humor and sympathy than bitterness.

PORTRAIT OF JENNIE by Robert Nathan: The "Portrait of Jennie" is an exquisite idyll, "a cameo-like story of love and beauty intertwined." A young artist, cold, hungry and despondent, walking thru Central park at dusk, meets a little girl. They fall into conversation and

### H.S. Annex to Be Renovated

Revised plans and specifications for the painting and refinishing of the annex to Torrance high school have been adopted by the Los Angeles board of education, according to A. S. Nibbecker, architect.

Estimated cost of the work is given as \$4,000. It will be done during the summer vacation period.

Mr. and Mrs. N. H. Cucel spent Sunday visiting relatives in San Fernando valley.

he learns her name is Jennie. She hopes he will wait 'til she grows up. Under her inspiration he paints again, magnificently. How Jennie grew up and how from time to time she came to him—that is Nathan's story and scarcely anyone writing today could have told it with equal tenderness or blending of phantasy and humor.

## Two Killed In Head-On Auto Crash

A terrific head-on collision between a speeding passenger car and a tow-car pulling a damaged automobile early Monday morning on Highway 101 near Narbonne avenue claimed the lives of two men and resulted in serious injuries to two women.

William D. Fisher, 31, of 2003 Plaza del Amo, Torrance, driver of the passenger car, died at the scene of the accident. Bert O. Weakley, Jr., 18, of 25104 Pennsylvania avenue, Lomita, succumbed at Torrance Memorial hospital of a skull fracture and internal injuries several hours later.

In a serious condition at San Pedro hospital are Mrs. Mabel Schiller, 29, of 25013 Walnut street, Lomita, and Mrs. Betty Hunt, 21, of Long Beach, both the wives of Navy enlisted men.

Mrs. Schiller suffered lacerations of the face and other injuries and Mrs. Hunt is confined with a fractured skull and right arm and leg fractures, it is reported.

Police said Fisher's car collided with a tow-truck which was being driven by Ward A. Rasmussen, 38, of Long Beach, who was arrested by deputy sheriffs and charged with suspicion of negligent homicide. Rasmussen was accompanied by his wife in the cab of the car but neither were hurt.

According to Rasmussen at the inquest Wednesday morning at the Gamby Mortuary he was driving east and the other car, which he did not see until immediately before the crash was traveling west.

Autopsies showed that both men died from hemorrhage and a multiple of injuries, including skull fractures. Fisher was an oil worker and was married. Weakley had lived in Lomita for about seven months, the family moving here from Redondo. He was employed at an aircraft plant.

Both bodies are at the Gamby Mortuary awaiting word from relatives in regard to funeral arrangements. Following the inquest Rasmussen was exonerated from blame.

Oregon has 400 miles of coastline.



SUMMER presents the usual difficulties of what to wear at in-between times, when sports or dinner dresses won't do. June Harper's Bazaar offers the idea of McBratney's white Irish linen; back and sleeves make it lively by being made of bright red cotton knit ribbing.

Mr. and Mrs. Henry Pingel returned this week from a month's visit with relatives in Wisconsin.

Mr. and Mrs. G. W. Dolton of 1320 Arlington avenue returned last week from a vacation trip to Yellowstone.

Word has been received by Mrs. Teala Bellini of the recovery of Charles Wakefield Cadman, noted pianist and composer, who has been convalescing at Palm Springs. Cadman has returned to Los Angeles and resumed his work.

Mr. and Mrs. George Morgan have as their house guest, Mrs. Morgan's cousin, Miss Maybelle Howard, of Dos Palos, Calif.

## Primary Race Now Under Way for 3 Offices

Last minute filings Saturday brought to an even dozen the number of candidates who this week began campaigning for the Democratic nomination for assembly in the 68th district. The primary election is Aug. 27.

Additional Congressional aspirants also made deadline appearances Saturday noon to make a four-cornered race for the Democratic nomination in the 17th district which includes this area. Eleven have filed with Registrar of Voters William Kerr for fourth district county supervisor.

With San Pedro residents dominating the list of assembly post seekers, Democratic candidates for the seat of the late Fred Reeves include two Torrance men, James J. O'Toole, 1225 Madrid avenue, dairyman, and Edgar S. Frenger, 3657 Emerald street, machinist; a Lomitan, Charles M. Smith, 24347 Lucille avenue, who also filed as a Republican candidate, and a Harbor City resident, Richard D. Pomeroy, of 26116 Regent street.

The San Pedro aspirants are: Walter Blinn, John George Boro, R. W. Donley, Cornelius J. McGovern, Willard Nall, John T. Rawls, Samuel R. Thomas and Vincent Thomas. John Polkki of San Pedro is a Communist candidate for assembly.

Submitting nomination papers for the Democratic Congressional race at the last hour were Francis N. Tighe and Walter Ralph Buchanan of Los Angeles. Mrs. Clara N. Colden of San Pedro and Lee E. Geyer of Gardena, incumbent, filed earlier.

Clifton Hix of San Pedro and Harold A. Sparling of the north end of the district are candidates for the Republican nomination for Congress. Samuel C. Converse, Los Angeles, filed for the Progressive nomination, and Harry L. Gray, also of Los Angeles, is the Communist entry.

A total of 10 men are challenging Supervisor Oscar Haug of Long Beach for election to the office to which he was appointed by former Gov. Merriam. In addition to the incumbent supervisor, the candidates are Oscar Haug, of Beverly Hills, no relation of the supervisor, spelling his name with an "o" instead of Haug's "a"; Tom W. Allen, Culver City; John L. Bogue, Gardena minister; Orville C. Mettett, Los Angeles; Carl Fletcher, Long Beach; A. Beldon Gilbert, Los Angeles; George H. Oldfield, West Los Angeles; John W. Baldwin, Los Angeles; James W. Melien, Los Angeles, and Maurice A. Wingo, Los Angeles.

Dear Public:

Just a line to let you know that I have left Firestone and am independently operating a complete Service Store of my own.

Hope you will call and let me serve you.

Sincerely,  
DON MILLER

P.S.

Official Opening  
Saturday, June 29th.

# DON'S SERVICE

Corner Cravens and Torrance Blvd.  
PHONE 866

Rio Grande Products

• Tires • Batteries • Auto Supplies



We call it  
**'Perpetual Non-motion'**

FOR SERVEL ELECTROLUX FREEZES WITHOUT THE NOISE AND WEAR OF MOVING PARTS

"We've got plenty of reason to be happy about our gas refrigerator! We know it will *always* be silent. And we know it will last us for a long, long time, too! The freezing unit hasn't any moving parts to make noise or wear. And the tiny gas flame that circulates the refrigerant costs so little it's amazing!"

STILL the biggest news in refrigeration history! Your gas company now offers you a 10-year unconditional guarantee on complete refrigerating system of every 1940 Servel Electrolux.

You'll want to "brag" about these other gas appliances, too!



CONVENIENT HOT WATER SERVICE is certain with an automatic gas water heater of the right capacity. Gas is the fast, economical, dependable way. And gas water heaters with tanks of Monel or Everdur last years longer.



TIME-SAVING COOKERY! Quick, controlled heat and improved burners on Certified Performance gas ranges bring you more leisure and better cooking results. You save money, too.



HOUSE HEAT THE WAY YOU LIKE IT! You can get a gas furnace that's just as automatic as you want it to be—so self-operating that you can forget about temperature and humidity.

Your Servant  
**Gas**

See the latest gas appliances for better living. Visit a dealer or SOUTHERN CALIFORNIA GAS COMPANY

FASTER  
CLEANER  
CHEAPER