

11,500 Parcels of Property in County Going On Auction Block

There will be 11,500 parcels of Los Angeles county property placed on the auction block starting July 1 and preparations for the sale have been completed, it was announced this week by F. B. Murphy, deputy in County Tax Collector Howard L. Hyman's office.

Unless these properties are redeemed by owners or are purchased at the sale they will be deeded to the state for non-payment of taxes. The state now owns 98,000 parcels of Los Angeles county property.

State Bureau Places 22,244 Workers in Jobs During May

Reflecting the current industrial upswing, the State Department of Employment this week announced a nine per cent increase in job placements for May over April 1940 with 22,244 California workers receiving employment thru the department's 78 field offices.

Jobs in private employment were found for 20,182 workers, the report shows; an increase of 13 per cent over the 17,902 placed in April 1940.

Public placements declined 18 per cent with 2,062 recorded for May 1940; a decrease of 449 from the April 1940 figure and 40 per cent less than the total public placements of May last year. This reduction in public placements is attributed to the elimination or curtailment of many federally sponsored projects, department officials said.

Unemployment insurance payments during the same period continued to gain with 499,062 checks being written in May for a benefit distribution of \$6,087,145; an increase of \$58,406, over the April 1940 total.

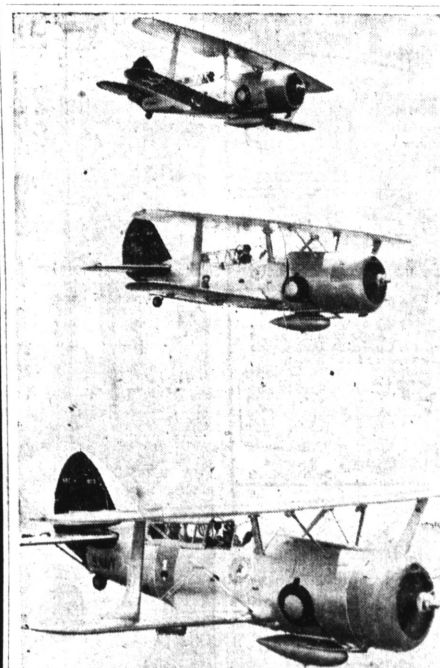
Owners may redeem these properties either by a cash payment of back taxes, penalties and interest or by their payment thru the five-payment plan provided by state law.

St. Pierre and Miquelon, two rocky islands close to Newfoundland, belong to France and are ruled by an administrator assisted by a council.



ENTERED IN LONG BEACH SHOW . . . Suzanne Wall of the famous Planetree Great Dane Kennels is shown above with two of the danes which will compete for cash and glory at this weekend's Long Beach Dog Show in the Municipal Auditorium.

Fifteen hundred pure bred dogs of all nations, representing 85 breeds, are expected to be benched, making the seventh annual edition of the Long Beach Dog Show the fourth largest in the world. The judging schedule calls for continuous activity from 10 a. m. to 10 p. m. both days. Five large rings have been set up on the floor of the convention hall in the Municipal Auditorium where 4,500 seats overlook the scene of judging, special events and exhibitions.



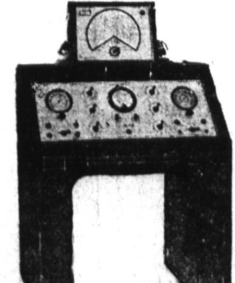
U. S. WINGS FOR ALLIES . . . These three of fifty fast navy reserve bombers, shown at Buffalo, N.Y., plant of Curtiss-Wright factory for camouflaging and sale to Allies, are part of "our resources" President Roosevelt said would go to French and British to aid them "in their magnificent fight." France's Reynaud had them in mind when he said: "We need horsepower, more than manpower."

For the best home offer of a conservative advertiser see class. Only 10 men since George Washington have been general of the U. S. Army, and Gen. George C. Marshall, present chief, is one.

SPECIAL TO THE SICK! FREE HEALTH EXAMINATION!

Three Days Only, June 24, 25, 26

NO Questions Asked
NO Clothing Removed
NO Guesswork
NO X-Rays Needed
NO Obligation



TELLS Cause of Your Trouble
TELLS How Bad It Is
TELLS Where It Is Located
TELLS You What to Do for It

And remember, don't tell the doctor where or what your trouble is. This examination will be different from any you have ever had. It locates diseased organs and tissues, tells what poisons you have which will produce ulcers, rheumatism, kidney, liver and stomach, male and female disorders, and other ailments. After above dates, this examination will be ten dollars. (One Examination to Family) (Hours: 10:00 A. M. to 4:00 P. M.)

DR. T. M. RUDOLPH, D.C.
Office in Oxford Hotel
249 W. 6th St. San Pedro

Pressure Groups Blamed by Hauge for Co. Cost Gain

Pressure groups organized by ambitious self-seekers were blamed today by Supervisor Oscar Hauge as a major cause for increased expenditures in county government.

"In spite of the high pressure tactics of minority groups and individuals, the board of supervisors is reducing the county tax rate, the most welcome news the county taxpayers have had in years," Supervisor Hauge said.

"We are trying to cut every unnecessary item from the proposed \$80,000,000 county budget, and at every step we are being faced by selfish and misguided groups, who place their special proposals above the general welfare. Some of these individuals and groups go so far as to threaten political action against members of the board who defy their efforts to obtain the taxpayers' money."

"Naturally not all of these organized groups are dishonest or underserving. Some of them sponsor really worthwhile projects, which the county should finance, if it had unlimited funds. But unfortunately the county does not have unlimited funds, and in this time of national emergency, Los Angeles county cannot afford to waste a cent of the hard-pressed taxpayers' money."

"My policy is, and always has been, to do my utmost to see that the county government is conducted on an economical and efficient basis, with the welfare of the entire Fourth District constantly in mind and with special favors to none," Hauge concluded.

Trash Burning After Hours Without Permit Costs Matron \$15

Mrs. H. R. Higgins, 2157 245th street, was found guilty in Justice Carroll's court Monday of burning trash after hours and leaving a fire unattended. She was cited on May 24 for the violation said to have taken place on May 20 and at that time demanded a jury trial. Monday she changed her mind and asked that the court decide the matter. A fine of \$15 was assessed which was paid.

Fire Chief Laski is anxious that people comply with the ordinance, especially during the dry season. The fact that several brush fires have in recent weeks done damage and endangered residences makes it necessary to strictly enforce the law.

A three-day burning permit can be secured without charge at the fire station, burning to be done between the hours of 5 a. m. and 11 a. m. Each permit carries instructions for precautions to be followed in setting open fires.

Narbonne High Students Raise \$75 for Red Cross

More than \$75 will be sent to the Red Cross from Narbonne high school, according to Miss Grace Champion, vice-principal, and W. E. Pollock, student body manager, after counting dimes received yesterday. A special assembly was held in the auditorium where a program including a film was presented. Hundreds of pupils paid the dime admission and other contributions from the faculty so far show more than \$75 received. Pollock has been in charge of Red Cross donations and reports ready response.

Want Ads 25c

PIONEER LUMBER COMPANY
GOOD PAINT \$1.59 Gallon
2x3's 2x4's 1x6's
AT LOWEST PRICES!
1826 213th St. Torrance, Calif.
1 Block East of P. & E. Depot on 213th St.
AL. CRINER, Manager

Sheriff's Officers Say Curfew Law Requires Big Force to Enforce

Hardly had the county's new curfew ordinance, which prohibits children under 16 years of age being on the streets after 9 p. m. in unincorporated county areas, been passed by the board of supervisors than protests began to be voiced by members of the County Sheriff's department.

They claim that it would require a force ten times that now in the department to carry out the provisions of the measure. Deputy sheriffs say that after July 11, effective date of the measure, children in these areas cannot attend night church services or evening picture shows unless accompanied by parents or parents obtain a permit from the sheriff's department. Parents are subject to a fine if they permit their children to violate the ordinance.

Deputy sheriffs assert their department would be swamped with requests for permits far beyond the capacity of the present personnel to provide.

WANT AD RHYMES CONTEST WINNERS

(Continued from Page 1-A)

Call K. W. Lister right away, You'll find his wares all O. K."

Third Prize Winner

Mrs. Neil J. McConlogue, 1028 Portland avenue, Torrance, will kindly call at our Torrance office for two tickets to the Torrance theatre.

The Ad:

New Stock Just In!

SAVE 20%-40%

Furniture Store.

C. Emmet, Owner

1229 El Prado, Phone 1067

The Winning Rhyme:

"How about a new divan? Or, covering for your floor? Then, try the 'nothing down' plan At El Prado Furniture Store."

Fourth Prize Winner

Nadine Delcor, 1808 West 260th street, Lomita, will kindly call at our Torrance office for two tickets to the Lomita theatre.

The Ad:

WAYSIDE CAFE

We serve salad with: Rose Struberg.

1952 Redondo-Wilmington Blvd.

The Winning Rhyme:

"Go to the Wayside Cafe, For good food; not much to pay. Rose Struberg serves beer, too, On 101 Blvd. 1-9-5-2."

Fifth Prize Winner

Mrs. George Murphy, 1884 262nd street, Lomita, will kindly call at our Torrance office for two tickets to the Lomita theatre.

The Ad:

A-L-L-E-N-S

"Where Price & Quality Meet"

Home Cooked Lunches and Frosted Malteds, etc.

1332 El Prado, Tor. 715

The Winning Rhyme:

"Ladies and gentlemen, right this way, For Bar-B-Q'd Sandwiches at Allen's Cafe.

Soft drinks, hot dogs, pies so sweet, Where old friends, prices & quality meet."

RHYMES RULES

Read these few simple rules:

1. Write a four-line rhyme based on some classified advertisement which appears on the regular classified pages of The Herald and News. Your verse must concern some particular ad — not classified ads in general. (Be sure to see rule No. 5.)

2. Write on but one side of the paper, and be sure to paste a clipped copy of the advertisement about which you write on the same side of the sheet — preferably above the rhyme.

3. Date each rhyme you send in.

4. Print your name and address in full and mail your verses to the "Classified Ad Rhymes Contest Editor," Herald-News Office, Torrance, Calif.

5. You may write more than one rhyme at a time (as many as there are ads if you wish) but each one must be on a separate sheet of paper and on a different ad each time. You may write each week on the same ad, if you desire.

Neck Fracture Surprises

SYDNEY, Australia (U.P.) — Charlie Ward, tripped up by a fellow garage employee, caustically remarked, "You might have broken my neck." As the neck was still stiff when he arrived home, he treated it with liniment. X-rays a few weeks later showed that the neck was really broken. Now Ward wants \$8,000 damages.

Aged H.C. Woman Takes Own Life

Prolonged brooding over the events of World War II is believed to have led Mrs. Carolina Mackinga, 84, of 1717 West 255th street, Harbor City, to take her own life by leaping into the pool at Rainbow Pier, Long Beach, last Thursday.

She was last seen that morning when she boarded a bus at Roosevelt highway and Western avenue. Her son-in-law, H. Phelps of the Harbor City address, told Los Angeles police in a missing person report filed Thursday that Mrs. Mackinga had been greatly disturbed over the war news from Europe.

The body was recovered by Long Beach police last Thursday night.

Walteria Group Picks Site for Auditorium

The Walteria Civic Organization decided late last week to recommend Park avenue as a location for a Walteria civic auditorium, officials announced after a ballot of the membership.

Assurance that the Dicalite Company would cooperate with the organization in controlling dust from the plant above Newton street was given by company officials, it was reported.

J. W. Crowther, who has served the civic group as dance chairman for the last two years, has been asked to continue in this service for the coming year.

Co-operation of the petroleum industry with the state and federal tax administrators has reduced evasion of gasoline taxes to half of what it was six years ago, according to an article in Business Week.

Remember? As recently as 1933 no nation had a powerful air force by present standards.



See Our Dairy Industry Display in J. C. Penney Company's Window!

For economy and health for her family, the wise woman serves dairy products. Milk, butter, eggs and cheese supply almost every required vitamin, protein, carbohydrate, fat and mineral at lower cost than any other foods.



MAYFAIR CREAMERY LTD.

1336 POST — Torrance — PHONE 337

DON'T MISS AMERICAN RED CROSS BENEFIT SHOW

"DANCE-KRIEG!"

A "BLITZKRIEG" OF ENTERTAINMENT

A GARRI-BRANT PRODUCTION

COMING Saturday, June 22 to the Civic Auditorium at 8 p.m.

"MUSIC" — "DANCING" — "SINGING" — "COMEDY" — with a Cast of 50 Artists

ADULTS, 25c CHILDREN, 10c

Vacation Sale

J. LEPKIN'S FAMOUS CUSTOM-TAILORED SUITS

\$45 Suits NOW \$40.50

\$50 Suits NOW \$44.50

\$55 Suits NOW \$49.00

Unrestricted choice of any fabric in the House. Take your pick of the Newest and Best Patterns, suitable for summer or all-year wear.

Order NOW, so we can make your suit in time for your trip.



DEFERRED PAYMENTS IF DESIRED — Keep your cash for Vacation Expenses, but have your New Clothes To Wear on Your Trip!

J. LEPKIN

MERCHANT TAILOR

1320 Sartori Torrance Phone 102

DODGE

LUXURY LINER

NOW ONLY \$755 * AND UP

DON'T let Dodge size and luxury fool you about the price! The Dodge Luxury Liner is a big car...the biggest, in fact, for the money. Yet Dodge costs only a few dollars more than smaller, low-priced cars—so little more you'll scarcely notice the difference! Why wait? Come in. See and drive this great Dodge—the finest car ever to bear the name of Dodge. Get our appraisal on your present car. It may more than cover the full down-payment on a new Dodge.

*This is Dealer's delivered price and includes all Federal taxes and all standard equipment. Transportation, title and local taxes if applicable.

COME IN TODAY AND SEE IT!

WALTER G. LINCH Redondo Beach
"WHERE TORRANCE BLVD. MEETS THE SEA AT REDONDO"
ESTABLISHED 11 YEARS
312 So. CATALINA AVENUE — PHONE REDONDO 2122