



YO HO HO, A SAILOR'S LIFE FOR ME!... Now is the season for sailing in Southern California. The above-pictured threesome, in a 1940 Dodge Luxury Liner sedan from the showrooms of Walter G. Lynch, Dodge-Plymouth dealer in Redondo Beach, have taken a Dodge "Full-Float-

ing Ride" to their yacht harbor and soon will be sailing the briny deep—as are hundreds of other Southern California boating enthusiasts these days. A motor car, however, usually plays a vital part in any out-door recreational activity, if not more than transportation to the scene of the sport.

Kings Canyon Park Data Announced

Information as to the hours for visitors entering the new and scenic Kings Canyon National Park, follows:

The General Highway Entrance will be open continuously and travel may enter at any time of day. The General Grant Grove Entrance from Sequoia Lake will be open from 6 a. m. until 8 p. m.

The foregoing schedule is subject to change, however should a change be made, publicity will be given several days in advance.

Prospects for stream fishing on opening day in the Park are not good due to high water. Bait in the lakes of the Park, however, should be good.

Don't Forget Campfire Permit in Nat'l Forests

Motorists, campers, and sportsmen who plan to visit national forests are advised they must have permits to build campfires in those areas.

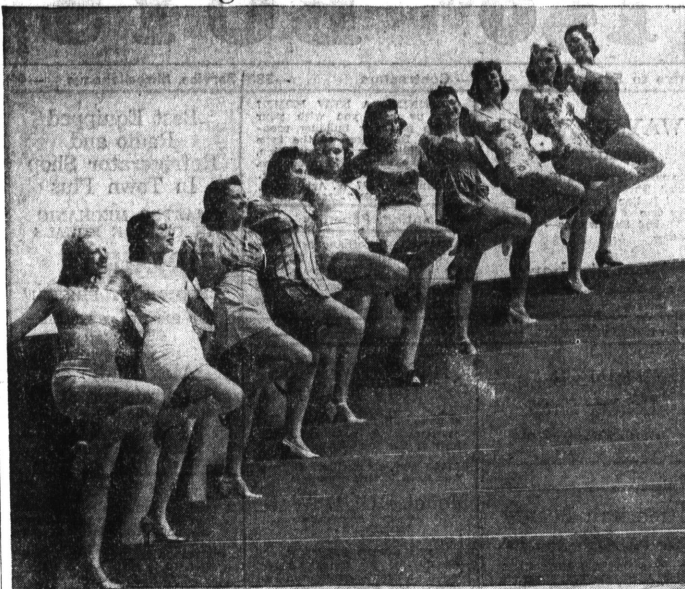
These permits, good for 1940, may be obtained without charge at any ranger station. Each permit contains specifications for the shovel and axe that must be carried by each automobile or pack train.

No Permit Required for Short Stay in Mexico

No permit is required for motorists driving as far as Ensenada, Lower California, for stays not exceeding 15 days. Persons planning to remain in Mexico 15 days or longer are required to obtain tourist cards at the Mexican Consulate. Issued in duplicate, the card is presented to the Mexican Customs when crossing the border. Upon returning the motorist must surrender the original card.

CHECK ARM SIGNALS
Traffic authorities recommend that drivers check up occasionally on the manner in which they give signals. Such an inventory often shows a slovenliness that would be resented on the part of another driver.

Toeing the Line at '40 Fair



Why men will visit Treasure Island for the 1940 Golden Gate International Exposition may easily be understood if you cast your eyes over these ten front line show girls, who will be featured in "Golden Days of '40," the California World's Fair's opening production, to be staged May 25 and 26.

Co. Tax Rate Cut Seen by Hauge

Supervisor Oscar Hauge this week predicted a substantial reduction in the present county tax rate of \$1.4973 for each \$100 assessed valuation for the coming fiscal year of 1940-41.

"While the temporary budget, which has been approved by the board of supervisors, does not indicate the amount of decrease I had hoped for, it is a remarkable accomplishment when one considers the mandatory and inescapable increases, totaling \$4,165,516, which must be included in the budget," Supervisor Hauge said.

He explained that his hope for further reduction in the tax rate was based on an estimated \$10,000,000 increase in the county's assessment rolls, resulting from new buildings.

Supervisor Hauge said that he and other members of the board

New Face for '40 Fair



An entirely new color scheme will greet visitors to Treasure Island when the 1940 season of the Golden Gate International Exposition opens May 25. Jesse E. Stanton, color architect for the California World's Fair, is shown with Miss Elizabeth Harrower, painting plaster models of the Elephant Towers and the Tower of the Sun, central theme structure of the Exposition. These model structures are being utilized by Stanton in the development of the 1940 color scheme.

had been advised by County Assessor John Quinn that there will be approximately \$175,000,000 in new construction in the county, including 40,000 new homes. These, he explained, will be added to the assessment roll

at half their value of \$87,500,000. The tax roll will not be completed until late in July.

Save money! Buy a good lot for only \$150. This offer won't last. See classification 843.

ALL SET TO GO!



—ANYWHERE IN AMERICA—
GET YOUR TICKETS AT THE BEACON

GREYHOUND • UNION PACIFIC
UNITED AIR LINES • CATALINA RESERVATIONS

BEACON DRUG CO.

LESLIE L. PRINCE, Prop.
The Rexall Store WE GIVE S. N. GREEN STAMPS
GRAMERCY and CABRILLO PHONE 180

CLASSIFIED ADS START HERE

CLASSIFIED ADVERTISING RATES AND INFORMATION

Your advertisement in this section reaches EVERY RESIDENT in Torrance, Lomita, Harbor City, Welteria, Rolling Hills and adjacent rural territory.

15 Word Minimum	Cash	Chg.
15 Words, 1 Time	25c	35c
15 Words, 2 Times	45c	55c
15 Words, 3 Times	65c	75c
15 Words, 4 Times	85c	95c
1 inch—1, 2, 3, Times, per insertion	50c	60c

5c (1c each) for each additional 5 words or fraction thereof, per insertion.

Cash rate allowed on all ads received by phone or mail if paid within 48 hours of date ordered.

Rates quoted are for consecutive insertions. Where change of copy is ordered, earned rate will be charged.

Ads may be cancelled after any insertion. Rate earned will be charged and balance refunded for unused space.

Not responsible for more than ONE incorrect insertion of any ad.

Longer term rates with space rates, furnished on request. Closing time for all classified ads, Wednesday, 5:00 p. m.

Cemeteries

BEFORE MAKING FINAL ARRANGEMENTS SEE PACIFIC CREST

CEMETERY MAUSOLEUM
CREMATORY COLUMBARIUM
COMPANION GRAVE VAULTS

182nd St. & Inglewood Ave.
Redondo 2388

Lodges, Clubs, Etc.

TORRANCE LODGE
NO. 47 F. & A. M.
L. G. Nelson
Worshipful Master
Jesse H. Sprout, Secy.
Meets Every Friday Night
Masonic Temple
1821 Sartori Ave.
All visiting Masons welcome.

Not Responsible

1 WILL NOT BE RESPONSIBLE, on and after April 30th, 1940, for debts contracted in the name of the Torrance Upholstering Co.
Signed: CLEVE HUDSON
Apt. 103, Gaylord Apts.

Professional Services

Auto & Fire INSURANCE

Thousands of satisfied motorists & home owners qualify us to take care of all your Auto & Fire Ins.
HOWARD G. LOCKE
1405 Maryland, Tor. 135-M

INSURANCE, General—
—SPECIALIZING IN—
AUTOMOBILE—
FIRE— FURS—
PLATE GLASS—
Ask for quotations on other lines.
WALLACE H. GILBERT
1631 COTA AVE. TOR. 420

Architects' Boner in Housing Plans Lowers Their Fees

Disclosure that the architects on the first two projects undertaken by the county Housing Authority were unfamiliar with some of the requirements of uniform building code with the result that changes had to be made in the plans was made in a copy of an opinion on file this week in the office of County Counsel J. H. O'Connor.

The plans were drawn for the Carmelitos project in North Long Beach, and for the Harbor Hills project, south of Lomita. A separate group of architects prepared the plans in each instance.

Changes in the plans resulted in added cost, which the architects will have to make good out of their fees, it was revealed. Arbitration of the difference in costs in both instances is under way between the county Authority and the architects.

The opinion of the county counsel, who is the Authority's legal advisor, was sought when the United States Housing Authority refused to allocate any additional funds. Federal and county attorneys both took the stand that since the architects had filed an affidavit stating that the plans complied with the county building code, they were liable.

Nearly 90 acres of the Golden Gate International Exposition will be devoted to flowers, plants, shrubs, trees and lawns during the 1940 Fair.

25% DISCOUNT FROM LIST PRICE

For Your Holiday Trip... TODAY'S BIG BUY! Firestone STANDARD TIRES

LIFETIME GUARANTEE
Every Firestone Tire carries a written lifetime guarantee — not limited to 12, 18 or 24 months, but for the full life of the tire without time or mileage limit.

HERE'S the biggest tire news of the year! Just imagine — the famous Firestone Standard Tire, backed by a written lifetime guarantee, at 25% discount from list price. You get extra protection against blowouts because the tire body is made of patented Firestone Gum-Dipped cords. And the tough, silent, long-wearing tread gives you longer mileage with non-skid safety. Put a set on your car today!

PICK YOUR SIZE AT THESE LOW PRICES

SIZE	LIST PRICE	YOU PAY ONLY
4.40/4.50-21	\$7.70	\$5.58
4.75/5.00-19	7.95	5.78
4.50/4.75/5.00-20	8.60	6.21
5.25/5.50-17	9.75	7.08
5.25/5.50-18	9.20	6.75
6.25/6.50-18	12.90	9.37

Price Includes Your Old Tire
Other Sizes Proportionately Low

SENSATIONAL NEW LOW PRICES ON Firestone CONVOY TIRES

4.75/5.00-19
\$4.95
AND YOUR OLD TIRE

6.00-16
\$6.66
AND YOUR OLD TIRE

5.25/5.50-17
\$5.95
AND YOUR OLD TIRE

EASY PAYMENTS? Yes! As Low As 50¢ A WEEK 12 to 20 WEEKS TO PAY **BUY A GOOD TIRE LOW PRICES • EASY TERMS NO DELAY**

Listen to the Voice of Firestone with Richard Crooks, Margaret See Firestone Champion Tires made in the Firestone Factory Cooke, Monaca, Nevada. Nationwide N. B. C. Red Network and Exhibition Building at the New York World's Fair

Cravens and Marcelina **Firestone** Torrance Phone 476
AUTO SUPPLY & SERVICE STORES

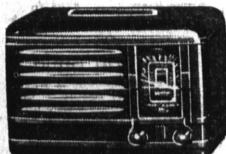
MADE in the WEST ESPECIALLY for the WEST!

PACKARD-BELL Radios are engineered particularly for Western reception, which is one reason for their unsurpassed performance and glorious tone.

Packard-Bell
THE WEST'S LARGEST SELLING RADIO

SEE THIS BABY ARISTOCRAT

Model 5-D Kompak,—compact and portable, with amazing tone quality, at a SURPRISINGLY LOW PRICE!



\$11.95
Easy Terms

Portable Battery Radios \$19.95
for Outings and Vacations, by Packard-Bell AS LOW AS

There are many other PACKARD-BELL radios, including radio and phonograph combinations,—ALL available at THE STAR.

STAR Furniture Co. Torrance
SARTORI and POST Phone 625