

Antonio Canyon Stream Stocked With Many Fish

Fishermen who for years have enjoyed their angling in the San Antonio Canyon stream, but who have been deprived of it since the 1938 flood, will be glad to learn that the Fish and Game Commission has stocked the stream near Camp Baldy with eight and ten inch Rainbow trout, about 17,000 of them, and will probably plant another 17,000 shortly. The road from Claremont via Padua Hills has not been rebuilt since the flood, so motorists are directed to turn off Foothill boulevard on Mountain avenue, 3 miles east of Claremont. The road is paved and in good condition.

GRAND CANYON TO OPEN

State Road 67 between Jacobs Lake and the North Rim of the Grand Canyon in Arizona, which has been closed for the winter, will be open to travel between today and May 20.

Cure for Vapor Lock Is Easy; But If You Run Dry Start Walking

If your car suddenly decides to quit on a long grade on your trip this summer, don't get unduly alarmed. The chances are it will only be a case of vapor lock—that is if you didn't forget to fill up with gas at the last station.

The cure for vapor lock is simple. Allow your motor to cool. The cause is vaporization in the line between fuel pump and carburetor creating an air pocket. The process can be hurried by placing wet rags on the fuel pump and fuel line, but care should be taken not to place them on the manifold or other cast metal parts that might crack.

So much for vapor lock. But if you run out of gas, there's only one answer. You had better start walking!

Newspaper Advertising of G.P. Special Offer Sets New Trade Record

Proof again of the fundamental value of newspapers—standing head and shoulders over all other types of advertising mediums—and proof again that a bona fide "special" featured at a definite price, is real news to which the public responds, has just been established in a campaign launched with big space, by a major oil company, in The Herald and Lomita News.

Departing radically from its former type of advertising, General Petroleum Corporation announced its semi-annual car checkup service with the type of copy which so many leading department and specialty stores have proven most effective, by advertising a "big special," including a complete car lubrication and 18 additional inspection and clean-up services during "Summer-proofing," at Mobilgas stations. Because of heavy demand on station operators, the special offer is being continued for a limited time.

That the plan clicked and clicked strong is borne out by the largest volume of patronage ever developed through any of this company's advertising, according to statements of company officials.

The General Petroleum program has also developed another interesting fact. The exceptional heavy response indicates this season will undoubtedly break all records in motor touring. Probably inspired by news that 1940 will be the all-record year for entertainment of casual visitors, who will flock here in increased numbers because of inability to travel to Europe, local motorists are catching the travel fever. They are planning more trips, and longer trips, than ever before.

Want Ads 25c

Doctor to Speak to Students Here

The last vocational guidance conference of the year will be held at Torrance high school next Tuesday, May 21. This is one of the "Lecture-Round Tables," sponsored by the Torrance Rotary club in the high school for the last four years under the direction of James Howe, chairman of the club's vocational guidance committee.

Dr. John Freeman, member of the Rotary club, will conduct the final conference on the subject of "The Practice of Medicine as a Career." The conference recently held on the subject of home economics was so successful that a second session was held, conducted by an official from the Frank Wiggins Trade School in Los Angeles.

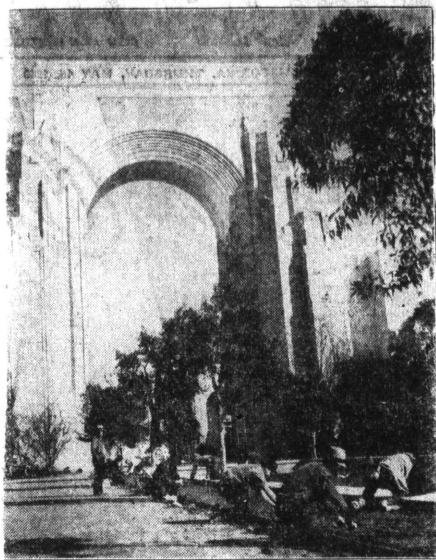


KEEPS DATE . . . Miss Dorothy Lacy, California girl who is making 6,000-mile dash to postponed wedding in Yokohama, changes planes in Seattle. Her fiancé is Klaas van der Weg, Dutch Sumatra oil executive.

Travel on Increase All Over America This Year

Americans intend to see America this year and let the warring nations of Europe take care of themselves. Motorists and vacationists who have no children in school will be wise to plan trips early in the summer or after Labor Day, thus avoiding peak travel months of the family group, who must plan trips during the period that school is "out." June and September are probably the ideal months for visiting a great part of the nation and during these months accommodations are not so crowded as during July and August.

Plant for '40 Fair



Hundreds of gardeners are engaged in replanting the famed gardens of Treasure Island, in anticipation of the opening of the 1940 season of the Golden Gate International Exposition, May 25. The scene is in the Court of Reflections, with the Triumphal Arch in the background.

"Trailer Vagabond"

By WARREN BAYLEY

After visiting Mammoth and Crystal caves, if you are not completely exhausted, there are some 98 others you can visit in the near vicinity. Of these, eight are open regularly shown to the public. The balance have little if any scenic value.

Not many visitors take more than two cave trips on a single visit. The old saying that when you have seen one cave you have seen them all, doesn't exactly hold true. However, being underground for several hours in a stretch, the steep climbs and the narrow passages tend to curb the enthusiasm of the most ardent explorers. The sunshine and the wide open spaces look pretty good when you come out. Underground rivers and the washing away of limestone deposits account for the many caves in such a small area.

Lincoln's Birthplace

Sixty miles to the north and east of the caves is the little town of Hodgenville, Kentucky, birthplace of Abraham Lincoln. Here, 110 acres have been set aside as a National Historical Park and a huge Memorial constructed to mark the birthplace of the Great Emancipator. On the inside of the Memorial building, the little log cabin in which he was born, has been reconstructed. The cabin is now located on exactly the same site as it was at the time of his birth, February 12, 1809. It has been occupied by several families since Thomas Lincoln left it to move nine miles

at Hodgenville Kentucky

north, on what is now the Jackson Highway. A Mr. Horne sold the Lincoln birthplace cabin to Royal P. Hankle, and he sold it to Richard Creal who occupied the double log house at the entrance to the farm, which was built back in the days when the Lincoln cabin was first erected.

Logs Widely Exhibited

After Lincoln's election to the presidency, the cabin was moved about a mile and a half from its present site and variously occupied as a school house, by Negro tenants and white occupants until 1894 when it was moved back to its present site. The cabin's 143 logs were taken to the Nashville Centennial in 1894 and later moved to New York and exhibited at the Buffalo Exposition in 1901.

In 1903 the logs were shipped to Louisville, Kentucky, where they remained stored in the Louisville Public Warehouse until they were expressed to Hodgenville in 1909 and used at the laying of the cornerstone and were then sent back to Louisville.

Housed in Memorial

At the dedication of the building in 1911, the cabin again rested on its original site inside the Memorial Edifice where it will probably remain until destroyed by decay and the dust of time.

John Cissell, attendant, guide and custodian of the cabin, and grandson Richard Creal, who lived in the double log house at the entrance, has never lived out of sight of the spot where Lincoln was born.

The Memorial Building was built by popular subscription. It was dedicated in 1911. President Taft delivering the chief address. "Trailer Vagabond" is sponsored and appears in this newspaper thru the courtesy of HOWARD G. LOCKE, fire and automobile insurance agent, 1105 Marcelina, telephone 135-M.

Poor Fishing Laid to Pressure on Stocking

Declaring that fishing conditions at Crystal Lake, county park at the north fork of the San Gabriel river are "deplorable," County Forester Spence D. Turner today charged that 15,000 fish which were scheduled to have been planted in the lake early this month were diverted elsewhere.

Fishermen in all sections of the county are said to have complained for some time against poor fishing at Crystal Lake and are declared behind Turner in his effort to provide better fishing.

"Unconfirmed rumors report that fish were diverted and placed in some other stream where there had been more popular pressure exerted," Turner charged in declaring that the fish never reached Crystal Lake. He asserts the county has spent hundreds of thousands of dollars in developing the park and better fishing should be assured anglers.

MEMORIAL DAY HOLIDAY
With the approach of Decoration Day on May 30, motorists are advised to make their holiday reservations early. This year the holiday falls on Thursday and many will have the advantage of a long week-end.

No Price Hiking at S. F. During Fair

Hotel men of San Francisco have joined forces to announce a drastic slash in rates effective during the run of the 1940 Golden Gate International Exposition.

In an earnest desire to provide reasonable accommodations for Fair visitors, San Francisco Class "A" hotels have stabilized their rate standard, with prices starting from \$4 for singles; \$6 for doubles and \$7 for twin occupancy.

Class "B" rates have been similarly reduced to \$2.50, \$3.50 and \$4, with many rooms available at these new low prices, hotel managers said. Slightly higher rates will obtain for more expensive suites.

In the Class "C" group single rooms may be had from \$2 to \$2.50, with doubles and twin occupancy starting from \$3 to \$3.50 and \$4 to \$5, respectively.

As a basic rule adopted by all agencies involved, there will be absolutely no "price hiking" during Treasure Island's 1940 season. Restaurant prices, amusement costs, transportation fares—every expense involved in the entertainment of guests—will be maintained at regular low levels.

Many Flower Fields in Full Bloom at Lompoc

Now is the time for motorists to visit the commercial seed farms in the vicinity of Lompoc. A great many fields are in full bloom and offer beautiful masses of contrasting color. Lompoc is approximately 154 miles north of Los Angeles and reached by following U. S. 101 to Las Cruces where State No. 1 is taken through a scenic canyon. An optional return route from Lompoc would be via Buellton, Santa Ynez and San Marcos Pass Road to Santa Barbara, where State 150 could be taken through Ojai Valley to Santa Paula.

Pinnacles Area Offers Scenic Hike Thru Tunnel

The Pinnacles National Monument, San Benito County, provides an unusually interesting and enjoyable trip at this time of year. Some wild flowers are still in evidence, hillsides are covered with a spring carpet of green and roads are good. Many improvements have been made in the trails which lead through these rugged rocks. Recent completion of a 43-foot tunnel leading to the caves, provides an easier, shorter and more scenic hike. The tunnel is about 7-feet high and was built by C.C.C. labor.

There is no entry charge to the Pinnacles National Monument, and a ranger is on duty at all times to escort parties through the caves. The wise person will wear comfortable walking shoes.

Yosemite Waterfalls Have Double Amount of Water

Snow gauge reports reveal that the water content of the Yosemite high country snowpack, which governs the volume of water flowing over Yosemite's waterfalls during summer months, is almost double that of last year and somewhat in excess of the ten year average. The wildflower display will also be one of the best in years. Dogwood is just beginning to bud and will last until mid-June, with azaleas at their best in June and July. The high country wildflowers will be in bloom from mid-June through August.

Get Clear Off Highway When You Make Stops

Get your car safely clear of the main traveled portion of the highway when stopping for sight-seeing or because of mechanical trouble.

Such a precaution is necessary not only for the safety of the motorist or mechanic who has to work on the car but also for the protection of other users of the highway. As an added precaution the wheels of the car should be blocked with stone or some other object, even on a slight grade. Don't rely solely on the brakes.

No Restrictions Entering Canada

Motorists planning summer vacations into the Pacific Northwest may cross the border into Canada without restrictions despite conditions which have been brought about as the result of the war in Europe.

"Tourists continue to be welcome and no restrictions of any kind have been imposed on such visitors," states an official announcement made by the Immigration Branch of the Canadian Department of Mines and Resources.

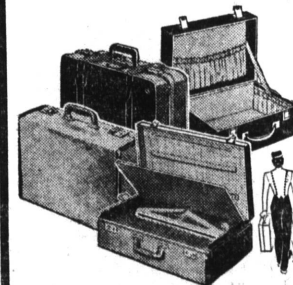
"Citizens of enemy countries would be subject to restrictions but those will not affect in the slightest the movement of tourists from friendly or neutral countries, who will continue to be welcomed as they have in the past," the official report stated.

LAS VEGAS HELLDORADO

Las Vegas, Nevada, will hold its Hellsdorado Celebration May 16, 17, 18 and 19. Activities begin tonight with a monster parade, in pioneer manner. With the exception of a 1904 automobile, only animal-drawn vehicles will be used. The rodeo will be held Friday, Saturday and Sunday afternoons.

VACATION LUGGAGE SPECIALS...SAVE!

Get that vacation luggage at a big saving during National Home's BIG LEASE-EXPIRATION SALE!



Overnight Cases

Now marked as low

\$2.95

SPECIAL MATCHED SET Heavy striped linen, sturdy chrome hardware, wardrobe case and overnight bag

SET OF TWO

\$9.50

Both cases beautifully lined with striped moire.

PORTABLE RADIO SPECIAL

Here's fun, a portable radio. Take it to beach, camp or picnic. Fine tone. LINEN COVERED!

\$19.95



National Home Appliance Co.
HARRY M. ABRAMSON "FRIENDLY CREDIT"
1312 Sartori Ave. Phone 78

PLAY THIS SUMMER!

Whether you go away to play this summer, or stay at home, the right equipment is the most important feature of your vacation. Get everything you need right in Torrance.

| | |
|--|---|
| Badminton Racquets \$2.49 to \$3.95 | Gallon Thermos Jugs \$1.25 to \$4.15 |
| Tennis Racquets \$2.95 to \$5.00 | Gasoline Lanterns \$3.95 to \$5.95 |
| Baseball Bats . . . 50c up | Coleman Stoves . . . \$4.95 Large with oven \$9.95 |
| BASEBALL GLOVES \$1.00 to \$3.95 | Roller Skates \$1.19 and \$2.15 |
| Folding Camp Chairs \$1.29 Director Type | Wilson's Tennis Balls . . 3 for \$1.03 Others 3 for 75c |
| 7-8-9 Quart Enamel Ware | |
| Coffee Pots \$1.35-\$1.65 | |
| Ocean City REEL, with STAR DRAG 250 Yard Capacity | \$2.98 |
| Penn. Long Beach REEL, STAR DRAG 250 Yard Capacity | \$5.75 |

| | |
|--|--|
| Reels for young fishermen 25c | Salmon Eggs 9c jar |
| Tackle Boxes 98c to \$3.25 | Telescope Steel Trout Rods \$1.45 |
| Willow Creel and Harness \$1.25 | Genuine Cuttyhunk Balboa No. 6 line, 36 pound test, 50 yards \$3.50 |

GEO. H. MOORE

HARDWARE
"MORE VALUE WITH MOORE"

ASK FOR FREE TIDE TABLE

Before You Leave on Your Trip Insure a Happy Homecoming!



Put Your Valuables In Our Vault

Where They Are Safe From All Harm!

Don't Risk Spoiling a Happy Vacation by Coming Back to Find Your Treasured Silverware, Jewelry, and Other Valuable and Sentimental Possessions STOLEN!

Large Safe Deposit Boxes

For Storing Bulky Articles, May Be Rented for \$1.00 per Month!

Smaller Boxes for Valuable Papers, Jewelry, Etc. \$3.00 per year!

Carry Your Funds in Traveler's Checks . . .

Don't carry cash when traveling — is good sound advice. For a very nominal fee, we will furnish you Travelers' Checks which are accepted EVERYWHERE at Face Value.

Torrance National Bank
"YOUR COMMUNITY BANK"