

Church Services

CATHOLIC CHURCH OF THE NATIVITY

Engracia and Manuel avenues, Rev. Fr. Joseph V. Fitzgerald, pastor.
Masses Sunday 8 and 10 a. m., week days at 8 a. m. Devotions Sunday and Wednesday, 7:45 p. m. Instruction for children after 8 o'clock mass on Sunday. Adult instructions Tuesday and Friday at 7:30 p. m. at rectory, 1447 Engracia.

LATTER DAY SAINTS

Woman's Clubhouse, David T. Rosatter, bishop.
Sunday school, 10 a. m. Evening service, 7 p. m. Tuesday, 2 p. m. Relief society, 3:30 p. m. Primary association, 4:30 p. m. Mutual Improvement association.

GRACE TABERNACLE

1324 El Prado, Rev. and Mrs. I. W. Kolb, pastors.
Sunday school, 9:45 a. m. Morning service, 11 a. m. Regular service Tuesday and Thursday evenings, 7:30 p. m.

MEN'S BIBLE CLASS

Meets at 9:30 a. m. Sundays in their hall opposite public library on Cravens avenue. All men welcome.
Special exercises honoring Mothers' Day and dedicating new hall.

FIRST CHRISTIAN CHURCH

Rev. F. T. Porter, pastor, 1415 Engracia.
Sunday school, 9:30 a. m. Morning service, 10:40 a. m. Topic: "Mothers' Day Thoughts."
Young people's meeting, 6 p. m. Evening service, 7 p. m. Topic: "Mother, Dad and Company."
Choir rehearsal Wednesday, 8 p. m. Board meeting, Tuesday, May 14, at 7:30 p. m.

LUTHERAN CHURCH

Rev. Frank D. Meehling, pastor. Acacia and Bonoma avenues.
Sunday school, 9:40 a. m. Morning service, 10:45 a. m. Topic: "The Sacred Flame." Confirmation of a class of children.
Evening service, 7:40 p. m. Bible hour, and prayer service, Wednesday, 8 p. m.
Choir rehearsal, Wednesday 7 p. m.

The Federation of Ladies Missionary Societies of the American Lutheran Church in Southern California will hold the annual convention at Santa Ana on May 16. Fifteen members of the local society will attend.

CENTRAL EVANGELICAL CHURCH

Rev. E. W. Mats, pastor. Marcellina and Arlington.
Sunday school, 9:45 a. m. Morning service, 11 a. m. Homecoming and Mothers' Day observance combined with 23rd anniversary of this church in Torrance. Sermon by Rev. O. D. Wonder, former pastor.
Young People's meeting, 6:30 p. m. Joint evening service, 7:30 p. m. at the Methodist church.
Choir rehearsal, Friday, 7 p. m. Annual Fellowship (potluck) dinner and business meeting, Tuesday, May 14, at 6:30 p. m.

NAZARENE CHURCH

W. A. Penner, pastor, 20507 North Royal, Hammerton Tract.
Sunday school, 9:45 a. m. Morning service, 11 a. m. Mothers' Day observance.
No evening service. Members asked to attend district convention at First church, 25th and Magnolia, Los Angeles, this week.

FIRST BAPTIST CHURCH

Rev. C. Miles Northrup, pastor. Carson and Marina.
Sunday school, 9:45 a. m. Morning service, 10:50 a. m. Topic: "Why a Mother Should be Godly." Special music, flowers for everyone.
Young People's meeting, 6:30 p. m. Evening service, 7:30 p. m. Topic: "Honor to Mothers."
Men's Bible class meets Monday, 7:30 p. m.
Prayer meeting, Wednesday, 7:30 p. m.

METHODIST CHURCH

Rev. Harry G. Banks, pastor. El Prado at Carson.
Sunday school, 9:45 a. m. Morning service, 11 a. m. Mothers' Day sermon.
Junior High Epworth League meeting, 6:30 p. m.
Evening service, 7:30 p. m. "Joyous Motherhood," a special program of music, poems and other features.
Church night for study and prayer, Wednesday.

FIRST CHURCH OF CHRIST, SCIENTIST

1208 El Prado.
Sunday morning services at 11. Sunday school, 9:30 a. m. Wednesday evening meeting, 8 p. m. Reading room in church edifice.
"Adam and Fallen Man" is the subject of the Lesson-Sermon on Sunday in all Churches of Christ, Scientist. This verse from John, "That which is born of the flesh is flesh; and that which is born of the Spirit is spirit," constitutes the Golden Text.
One of the Bible citations includes these passages about Jesus from Mark: "And, behold, there cometh one of the rulers of the synagogue, Jairus by name; and when he saw him, he fell at his feet, and besought him greatly, saying, My little daughter lieth at the point of death; . . . And when he was come in, he saith unto them, Why make ye this ado, and weep? The damsel is not dead, but sleepeth. And they laughed him to scorn. But when he had put them all out, . . . he took the damsel by the hand, and said unto her, . . . Damsel, I say unto thee, arise. And straightway the damsel arose, and walked."
Included in the Lesson-Sermon are these statements from "Science and Health with Key to the Scriptures" by Mary Baker Eddy: "A demonstration of the facts of Soul in Jesus' way resolves the dark visions of material sense into harmony and immortality. . . . To divest thought of false trusts and material evidences in order that the spiritual facts of being may appear, this is the great attainment by means of which we shall sweep away the false and give place to the true."

FOUR SQUARE GOSPEL

Mr. and Mrs. Ben Griffin, pastors, 1207 El Prado.
Sunday school, 9:30 a. m. Morning service, 11:30 a. m. Evening service, 7:30 p. m. Midweek meetings Wednesday and Friday, 7:30 p. m.
ST. ANDREW'S EPISCOPAL CHURCH
1132 Engracia, Rev. Thomas R. Marshall, vicar.
Sunday services will include the church school at 9:30 a. m. Morning prayer and sermon at 11 a. m. The vicar will preach on "The Christian Family."
Holy Communion every Thursday at 11 a. m. with prayers for the sick and those in need.
The Convocation of Los Angeles will meet Thursday, May 16, at St. Timothy's Church, Compton. The program will begin with Holy Communion at 9:45 a. m. St. Timothy's is located at Laurel and Oleander streets.

VISITOR FROM GARY

R. J. McCurley of Gary, Indiana, and the U. S. Steel mill in that city made a surprise visit at Columbia Steel plant Tuesday where he was greeted by his one-time next-door neighbor in Gary, Lou Greenman of the local personnel office.

Churchmen Elect New Directorate

A board of directors was elected by the Torrance Episcopal Men's club of St. Andrew's church Tuesday evening when nearly 50 attended the dinner-session and enjoyed a program of motion pictures and songs by the Madrigal singers from the high school at the church parish hall.

The directors, John Shidler, Hugh Sherkey, James Wilkes, Wallace Post and Lou Deininger, will select the new officers of the club. Following the turkey dinner, the Southern California Telephone Company screened a movie depicting recent advances in transcontinental communication under the title of "A Continent Bridged." The Madrigal singers were directed by Mrs. Marjorie Cooke.

Churchmen Elect New Directorate

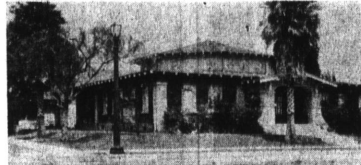
The directors, John Shidler, Hugh Sherkey, James Wilkes, Wallace Post and Lou Deininger, will select the new officers of the club. Following the turkey dinner, the Southern California Telephone Company screened a movie depicting recent advances in transcontinental communication under the title of "A Continent Bridged." The Madrigal singers were directed by Mrs. Marjorie Cooke.

Churchmen Elect New Directorate

The directors, John Shidler, Hugh Sherkey, James Wilkes, Wallace Post and Lou Deininger, will select the new officers of the club. Following the turkey dinner, the Southern California Telephone Company screened a movie depicting recent advances in transcontinental communication under the title of "A Continent Bridged." The Madrigal singers were directed by Mrs. Marjorie Cooke.

Triple Observance at Evangelical Church Here Sunday Morning

Central Evangelical Community church at the corner of Marcellina and Arlington avenues will observe three events next Sunday, according to Rev. E. W. Mats, pastor. First there will be a Homecoming in recognition of the church's 23rd anniversary in Torrance. Then mothers will be honored for National Mother's Day and Pentecost Sunday will be observed.



Central Evangelical Church.

This church is one of the oldest in Torrance and occupies an important place in the community today. A special Homecoming Service is planned for the 11 o'clock assembly. The choir will present a special anthem for the occasion and the male quartet, composed of Messrs. Charles Curtis, Fred Lessing, Carleton Bell and Dr. W. J. Neelands, will sing several numbers.

Bible Class to Dedicate Building Mother's Day

To dedicate their new hall, located opposite the public library on Cravens avenue, members of the Torrance Men's Bible Class will hold a special Mothers' Day service Sunday morning, May 12, starting at 9:30 o'clock. Ladies are invited to attend this meeting, which will last for one hour.

The new building has been equipped with theatre seats arranged around the hall and includes a well-arranged kitchen. It was built by Ed Morang of 1437 Post avenue.

Miss Bunola Kay, Los Angeles singer, will be guest soloist at the dedicatory service. The Bible class has been a community institution here for many years. Its original meeting place was in the Torrance theatre. Recently it has been assembling at the Boy Scout hall on El Prado.

Special Program For Mothers at Methodist Church

A special program has been arranged in honor of Mothers' Day at the First Methodist church, starting at 7:30 o'clock Sunday evening. Opening with a prayer by Rev. Harry G. Banks, the service will continue with selections by the choir, reading of appropriate poems, solos by Rose King, Fred Hamilton and Carleton Bell, a duet by Kenneth Fasnacht and Carl Pisel, numbers by the male quartet, composed of Fred Lessing, Richard Hogue, Pisel and Fasnacht and stories by Elsa DeBra and Phyllis Hamilton.
All residents of Torrance and vicinity are cordially invited to attend this service which will be the most elaborate Mothers' Day presentation in the city Sunday.

OBITUARY

MRS. EMMA SNYDER . . . sister of O. J. Batsch, service station operator on Arlington avenue, passed away Sunday at her home in Pittsburgh, Pa., following a sudden heart attack. Her husband died 14 months ago.

JOANNE SMART . . . nine-year-old daughter of Mr. and Mrs. Fred Smart of 20608 North Elliott street, Keystone, succumbed yesterday at a Los Angeles hospital. She had been ill for about a week.

In addition to the bereaved parents, those who mourn the little girl's untimely death are her uncles, two aunts and her grandparents, Mr. and Mrs. Albert Smart of 1877 222nd street. The funeral will be held Friday afternoon at 2:30 o'clock at Stone and Myers mortuary, Rev. Harry G. Banks will officiate. Interment will be at Roosevelt Memorial park.

The King is by law the supreme governor of the Church of England.

FOR 10 YEARS THE QUALITY DOG FOOD

NOW BETTER THAN EVER!



DOYLE'S Supreme Dog and Cat Food

Beautify Your Car
with a
Chem Cream Facial
For a 75c Wash that Looks Like a Polish
Costs No More Than an Ordinary Wash, and You'll Be Amazed at the Difference!

HEDGES RICHFIELD SERVICE STATION
1924 CARSON ST. PHONE 707

Church School Parents, Teachers to Cooperate

Believing that religious education calls for cooperation between the home and the church, parents and teachers of St. Andrew's Episcopal church school have planned a series of meetings. Parents of the two older classes met two weeks ago with the school staff. Parents of primary children will meet with the teachers May 21 and parents of

intermediate classes will be invited to meet with the teachers in June.
In presenting the plan, Rev. T. R. Marshall stated that "the condition of the world today makes Christian education our most important youth activity. The future of our families, communities, nation and world depends on the religious and moral education we give to our youth. To be successful parents and teachers must work together."

The Herald—3 months, 50 cents.

CARSONMART

1929 Carson Street Torrance

BUTTER		HALF GALLONS	
SOLIDS	lb. 30c	2 MILK	29c
Colorado Gold	lb. 32c	Gerber BABY FOOD	
Knudsen's	lb. 33c	3 cans	19c
Danish	lb. 33c	Swank TOILET TISSUE	
Red Wing Pure Concord		3 rolls	25c
GRAPE	15c	Fame Sour No. 2 cans	
JUICE pts. 15 qts. 27c		PITTED CHERRIES	10c
Libby CORN BEEF	12 oz. can 19c	Ghirardelli's 1-lb. blk. CHOCOLATE	
Del Monte PEACHES	No. 2 1/2 2 for 25c	Del Monte TOMATO SAUCE	
SCHOOLDAYS POPCORN	19c	Del Maiz Niblets	
Dole's PINEAPPLE CHUNKLETS	No. 211 cans 3 for 25c	Lindsay Large No. 1 can RIPE OLIVES	
SEEDLESS RAISINS	Sun Maid 15 oz. pkg. 2 for 11c	Blue Label KARO	
FANCY SOLID PACK TOMATOES	1 lb. 2 1/2 cans 9c	1 1/2-lb. 12c 3-lb. 22c	
MUSHROOMS 3 for 25c		KREMEL 3 pkgs. 10c	
Brandywine Pieces and Stems — 2 oz. cans		LIBBY'S Cream Style CORN, No. 2 cans 9c	
FRESH LOCAL EGGS	22c dz.	Punch Fruit Cocktail No. 2 can 10c	
		1/2-Gallon CLOROX 25c	

RINSO reg. 19 1/2c lge. 54c
Washes Clothes Sparkling White

LUX FLAKES lge. 21c
Cuts Down Stocking Runs—Saves Elasticity

LUX SOAP 3 for 17c
Active Lather for Complexion and Bath.

LIFEBUOY 3 for 17c
Protects Health

TRIPLE-CREAMED SHORTENING
SPRY SHORTENING . . . 3 lb. can 48c
Stays So Fresh and Sweet

TAWA PRODUCE No. 4

U. S. No. 1 SELECTED—WHITE ROSE

NEW SPUDS 10 lbs. 15c

NEWTON PIPPIN APPLES 5 lbs. 15c

NEW CROP—SWEET SPANISH ONIONS 4 lbs. 10c

GOLDEN RIPE—No. 1 Grade BANANAS lb. 5c

We carry selected grade of Golden Bantam Sweet Corn, Strawberries, Blackberries, Cherries and Cantaloupes.

GRUBB'S MARKET — CHOICE MEATS

SLICED BACON 1/2-lb. pkg. 10c

LUER'S HYGRADE TENDERMADE HAMS lb. 23c

YOUNG HENS (for stewing) lb. 23c

FRESH DRESSED YOUNG HEN TURKEYS lb. 20c

FRESH DRESSED FRYING RABBITS lb. 28c

R. I. RED FRYERS lb. 35c

KENNETH HEDGES
Richfield Station
TIRES
6:00x16 Goodyear All-American
\$6.95 with old tire
Buy On Terms
Nationally known sparkplugs, 54c each
1924 Carson St. Phone 707

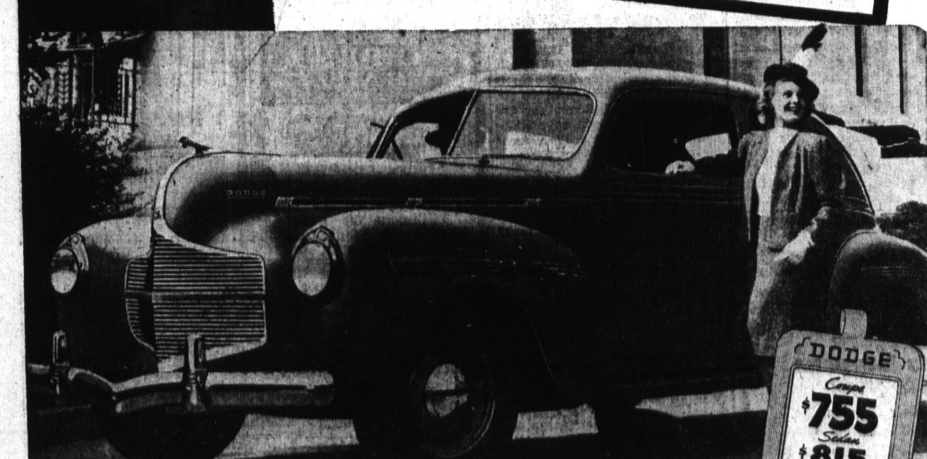
DODGE IS THE BIGGEST VALUE PACKAGE IN TOWN. AND IT'S SO VERY EASY TO OWN!

Before you buy any car see your Dodge Dealer for the "hottest" money-saving news in a long, long time!



NEW-CAR BUYERS, it won't be long now! With Spring spreading the urge to be out on the open road, you'll soon be comparing motorcar values.
Before you decide on any car, compare the big 1940 Luxury Liner, point by point, with the others.
If it's beauty you want, compare Dodge's new windstreamed styling, its gorgeous interiors and appointments.
Size and roominess? Dodge has a full 119 1/2-inch wheelbase, wider seats, big V-shaped windshield, and new straight-type doors.
And let's not forget Economy. Through the years Dodge has always been famous for gas and oil savings, longer life and higher trade-in value.
Do you realize how little this big 1940 Dodge really costs? It's priced so close to the smaller cars that you'll hardly notice the difference as you pay!

SALES ARE BLAZIN'!
IN MOTOR-WISE DETROIT, Dodge leads all other cars in sales for the year to date, except only the three most popular cars . . . know automotive values and their of Dodge value dependability, economy and striking beauty!
And Dodge Sales Are Zooming Right Across America!
So your Dodge Dealer Needs Good Used Cars NOW!
BIG ALLOWANCES are now being offered for used cars in trade on the new Dodge Luxury Liner. You will save plenty today or tomorrow. They need good used cars including:
FORDS • BUICKS • CHEVROLETS • DODGES • OLDSMOBILES • PONTIACS • PLYMOUTHS



1940 Dodge Luxury Liner, 6-Passenger, 4-Door Sedan \$815, delivered in Detroit.
FOR A SWELL TRADE-IN ALLOWANCE SEE YOUR DODGE DEALER TODAY!
WALTER G. LINCH REDONDO BEACH
"WHERE TORRANCE BLVD. MEETS THE SEA AT REDONDO"
ESTABLISHED 17 YEARS. 312 So. CATALINA AVENUE — PHONE REDONDO 2122