

PURE BOILED OR RAW
Spencer-Kellogg
**LINSEED
OIL**
79¢ gal.
Own Container
Torrance Paint Store
CORNER POST & SARTORI



On Tuesday, April 9th
ELECT—
JAMES J. O'TOOLE

- Home-owner, taxpayer, father of three sons.
 - O'Toole a Workingman understands a Workingman's town.
 - O'Toole is awake to the unemployment problem in the city.
 - O'Toole is solicitous of those in distress.
 - O'Toole pledges himself to represent all the people in the city.
- ABLE - EFFICIENT - HONEST**
TRUTHFUL
Action NOT Reaction

**Double Your Home's
Livability...**



Make FULL use of your home this spring—remodeling will reclaim many parts of your home now used as mere storage space, or worse yet, not used at all. Come in today and let us show you concrete examples of what can be done for your home.

TORRANCE LUMBER CO.
1752 BORDER
Phone 61

New Zoning Plan In Effect at Harbor City

The Harbor City zoning plan is now in effect, according to L. F. Brinkman, zoning engineer, following its final passage by the Los Angeles city council this week. No changes were made from the plan as adopted and approved. Heavy industries are restricted chiefly to an area east of Frampton avenue and business areas to designated territory.

Territory included in the plan extends from Lomita boulevard on the north, the Pacific Electric line and Gaffey street on the east west to Western avenue and south beyond Palos Verdes Drive.

The plan drafted by the zoning committee was approved by the Chamber of Commerce after hearings were held and certain established business places were excepted from the residence provisions.

Harbor City was first laid out, zoned for heavy industry only, and this has been a handicap to the building of a desirable residence section. Now assured of protection from oil drilling and objectionable industries, a considerable part of the community is set aside for homes and property owners can go ahead with plans for beautifying residential streets.

Five on Steel Plant's Sick List Here

More entries were made on the "sick list" at the Columbia Steel plant this week than for some time in the past, it was learned yesterday. Those unable to report for work include:

Frank Stein, bar yard shearman, ill with influenza; Chester Codd of the sheet mill, seriously ill with pneumonia, and James Horn, hot bed man in the 12-inch mill, influenza.

Ronnie Dill, rolling mill warehouse worker, is recovering from a broken leg while the same injury suffered by Nick Chaykowski, sheet mill shipping worker, as result of a fall while ice skating in Los Angeles, is keeping him confined at home.

Model Country Church Fashioned by Cripply

BRATTLEBORO, Vt. (U.P.)—William J. Morrison, 70, and for 29 years confined to a wheel-chair, has created a "model country church" 22½ inches long, 14 inches wide and measuring 36 inches to the top of the weather vane.

Cost for materials—including electric fixtures to light the interior—totaled \$10. The model is complete even to a bell in the steeple, rung by the usual rope in the entry.

FHA Loans Here in '39 Amounted to \$228,000; 65 Homes Benefited

Year-by-year increase in volume of insured mortgage business in the city of Torrance is noted in the annual report of W. G. Bingham, Southern California district director, Federal Housing Administration, recently issued and which shows a total of close to 150 Torrance home properties receiving benefits of FHA insurance.

During 1939, 31 mortgages were accepted for insurance by the local office, under Title II of the National Housing Act, valued at \$111,300 which brought the total number of mortgages accepted for insurance on Torrance properties since inception of the FHA program to 96 cases valued at \$347,400. Of this total, 71 cases valued at \$271,540 called for construction of new

homes under FHA inspection, and 25 for \$75,860 covering refinancing of existing liens and purchase-money mortgages on homes already built.

During 1939, a total of 28 new small homes valued at \$102,700 were accepted for insurance under Title II, and an additional six for \$14,000 were accepted on homes to be built under Title I.

The average dollar value per

case on the Title II mortgages reached the low of \$3,667 for 1939 dropping from \$3,963 during 1938. The average under Title I was \$2,333.

Following are the cumulative totals for Torrance and the surrounding communities from inception of the FHA program in Southern California District, through 1939:

Mortgages accepted for insurance: (Commitments)		
Town	No.	Amount
Torrance	96	\$347,400
Redondo	57	227,100
Hawthorne	78	169,650
El Segundo	70	216,300
San Pedro	231	846,315

SEEMS LIKE YESTERDAY

By C. KESSLER



County Tightens License Ordinance

In their effort to raise more tax funds Los Angeles County supervisors this week tightened the screws on small businesses and after 30 days, when the ordinance passed by the Board of Supervisors becomes effective, small businessmen will feel the pinch and begin paying out fees for licenses permitting them to do business.

A long list of small businesses were cited in the ordinance setting forth fees they are to be charged for permits to operate. The fees vary from nominal accounts to large sums.

Dance permits hereafter will cost \$3 for one dance, \$20 for a series of dances per month, \$10 for one to three months and \$120 for three to 12 months. Various small businesses mentioned in the ordinance and the fees which are to be charged follow:

Russian, Swedish and Turkish baths, \$30 per quarter year; ice wagons, stands or peddlers, \$3 per quarter; laundry wagons, \$1 per month or \$3 per quarter; dry cleaner trucks, \$3 per quarter; theaters, \$2.50 per day, \$12 per quarter; merry-go-round, ferris wheels and the like, \$5 per month; shooting galleries, \$2 per day or \$5 per month. Tent shows, \$3 per day or \$30 per month in fire protection districts and \$5 per day or \$50 per month if not in fire protection districts.

Riding academies, \$5 per year; rendering plants and public dumps, \$6 per quarter; pet shops, \$5 per year; poultry sales businesses \$6 per quarter; processing works, \$6 per quarter; auto camps, \$5 per year and resort camps, \$16 per year; bottling works, \$6 per quarter.

Two 'Daylights' To Be Added to L.A. - S.F. Run

The fastest train schedules ever established between Los Angeles and San Francisco will be put into effect by Southern Pacific March 30, with two Daylight streamliners streaking north and south over the coast route daily.

This was made known today by William H. Bratton, local agent for the company, who announced that the original Daylights, refinished throughout, will return to service with a noon departure to supplement the morning trains of the same name, recently placed on the run.

The designs Morning and Noon are to be added to the name of the Daylights in keeping with their departure times, Bratton said, and their through schedules will be nine hours and 30 minutes, and nine hours and 40 minutes respectively, both north and southbound.

Completely Overhauled

Leaving Los Angeles and San Francisco at 8:15 a. m., as at present, the Morning Daylights will clip 15 minutes from their runs, reaching their terminals at 5:45 instead of 6 p. m. They will continue to stop only at Glendale, Santa Barbara, San Luis Obispo, Salinas and San Jose.

The Noon Daylights will reach San Francisco and Los Angeles at 9:40 p. m., with an additional stop at Watsonville Junction. Their later departure will make possible connections from many southern California stations, it was pointed out.

Completely overhauled and refurnished, the Noon Daylights have also been fitted with loud-speaker systems, such as built into the Morning Daylights, for use in calling the attention of passengers to the scenic highlights of the trip.

SNOWPACK DOUBLES

The snowpack on California watersheds just about doubled during the 30 days ending March 9, but snow supplies on lower elevations still remains deficient, the California cooperative snow surveys reported today.

The body of Major John Andre, British soldier executed as a spy in American Revolutionary war days, is interred in Westminster Abbey, London.

Seventh Church of Christ, Scientist of
Los Angeles at San Pedro
Invites you and your friends to a
Free Lecture on Christian Science
"CHRISTIAN SCIENCE:
ITS PRACTICE AND PROOF"

Florence Middaugh, C.S.
OF LOS ANGELES

Member of the Board of Lectureship of The Mother Church
The First Church of Christ, Scientist, in Boston, Massachusetts
in the Church Edifice
Tenth Street and Cabrillo Avenue, San Pedro
Sunday Afternoon, March 17
3:00 O'clock Doors Open at 2:00 O'clock

Our Classified Advertising Gets "Results" — Phone 'em In

Save \$15⁰⁰ TO \$30⁰⁰
On This Mission "EVERDUR"
GUARANTEED 20 YEARS



ALSO SAVE

\$750

TO

\$15⁰⁰

ON

MISSION'S

FAMED

Steel Tank

Water

Heaters

• THERE IS A MISSION WATER HEATER FOR EVERY SIZE HOME AND PURSE!

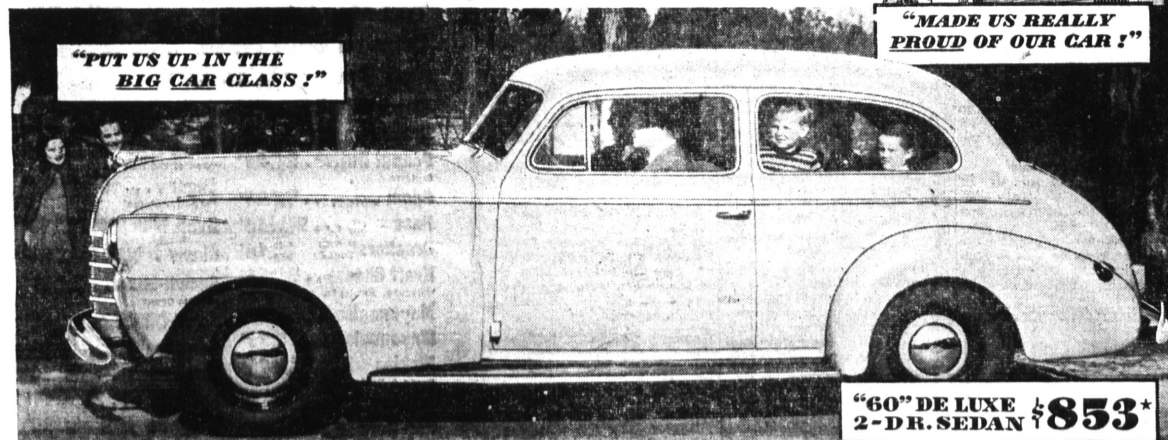
BUDGET TERMS AVAILABLE!!

DAVID JACOBS

PLUMBING and HEATING

Phone 88 Torrance 1324 Cabrillo

**"LOOK WHAT A FEW EXTRA
DOLLARS DID FOR US!"**



"PUT US UP IN THE
BIG CAR CLASS!"

"MADE US REALLY
PROUD OF OUR CAR!"

**"60" DE LUXE
2-DR. SEDAN \$853***

COMPARE OLDS WITH
LOWEST PRICED CARS.
FOR ONLY A FEW DOLLARS
MORE IN COST, OLDS
GIVES YOU A WHOLE
OF A LOT MORE IN
EVERYTHING!

**"BOUGHT US ALL THIS
EXTRA VALUE!"**

EXTRA SIZE! Inside and out!
"Longer—197½ inches from bumper to bumper.
EXTRA STYLE! From coast to coast,
they call it, "the best looking car on the road!"
EXTRA POWER! Big 95 Horse-

power Econo-Master Engine in the Sixty.
EXTRA COMFORT! The only low-priced car with modern coil springs all around.
EXTRA QUALITY! Feature after feature usually found only in high-priced cars!
EXTRA PRESTIGE! Engineered to fine-car standards—built in the fine-car way.
plus ECONOMY THAT COMPARES WITH THE BEST

**ALL THIS
STANDARD EQUIPMENT**

* Olds prices begin at \$807 for Coupes, \$853 for Sedans, delivered at Lansing, Michigan. Prices include Bumpers, Spare Wheel, Tire, Tube, Dual Trumpet Horns, Instrument Panel Hood-Lock, Automatic Choke, Vacuum Booster Pump, Fisher No Draft Ventilation, Safety Glass, Chrome Window Reveals, Chrome Interior Hardware, 2 Windshield Wipers, 2 Sun Visors, 2 Front Seat Arm Rests. Transportation based on rail rates, state and local taxes (if any); optional equipment and accessories—extra. Prices subject to change without notice. A GENERAL MOTORS VALUE Help promote safety—dim your lights when passing!

OLDSMOBILE

"BEST LOOKING CAR ON THE ROAD!"

MULLIN'S SERVICE

2053 TORRANCE BLVD
PHONE 320-J



**"Talk about
'hot water,
aplenty'**

**-our new Rustproof water
heater tank is guaranteed
against failure!"**

"It's a great satisfaction to know that our gas water heater will keep on furnishing plenty of hot water—year after year. No worries about rust or corrosion—that new tank of ours is guaranteed against troubles like that."

Actual tests show that rustproof automatic gas water heaters last many times as long as ordinary heaters. You save \$15 to \$30 on the rustproof type if you act during the special sale now being conducted.

You get convenience and economy with other gas appliances, too!



CLEAN COOKERY! Just see how easy it is to keep pan-bottoms shiny when you have a modern, Certified Performance gas range. Burners are non-clog, easy to regulate.



SILENT AND ECONOMICAL REFRIGERATION! Servel Electrolux operates with a tiny gas flame. No moving parts in the freezing system. And parts that do not move cannot make noise—or wear out!



ENJOY THE RIGHT KIND OF HOUSE HEAT! Right temperature, right humidity, right cost—with gas winter air conditioning. There's a gas furnace to fit every winter need.

Your Servant Gas

Enjoy modern convenience with appliances that are modern. Get full information from a dealer or SOUTHERN CALIFORNIA GAS COMPANY

**FASTER
CLEANER
CHEAPER**