

The Hostess Takes It Easy

By Katharine Fisher

Director, Good Housekeeping Institute

There was a time when to invite ten or more people to a "sit-down dinner" took all the courage we possessed. But today, even though our dining room may be small, we are learning how to entertain easily and happily almost any number of people. In fact, for entertaining, more and more of us are adopting the simple, delightfully informal buffet meal—a meal which appeals to men and women alike, and which does not limit the number of your guests to the size of a dining room table.

One of the nicest things about a buffet luncheon, dinner or supper, is that it is always so flexible. For example, if your home is small, and you have invited quite a few guests, all you need is a fair-sized table, placed where it is most convenient, on which to arrange the buffet fare, and enough comfortable chairs in the same room or in adjoining rooms.

The buffet menu should be such as to minimize the dangers of holding a plate on the lap, and so foods that need knives, or that must be served in sherbet glasses, should be served for some other time. Limit your menu to two courses: a main course of one or two hot dishes, with relishes, sandwiches or a buttered hot bread, a hot beverage, and a crisp, crunchy salad, and a dessert.

Arrange the entire main course, with the necessary china in piles, the silver and napkins in place on the table. (The water and glass may be on the buffet table if there is room, or on a side table.) Invite the guests to take a plate, help themselves to food, silver, and a napkin, and then find a comfortable chair. You may have one or two of your friends serve at the table if you like, but you can manage without this help.

While the guests are enjoying second servings of the main course to which they have been invited to help themselves, you will have an opportunity to clear off the serving dishes from the buffet table and arrange the dessert course and necessary silver on it. When the table is reset and ready for dessert, ask the guests to leave the soiled main-course plates on one or two small tables placed conveniently in the dining room or one of the other rooms, and then to serve themselves to the dessert. Of course, if you have a maid, she can take care of rearranging the table for dessert, etc., leaving you free to carry on your duties as hostess.

Some of you may have a large home and spacious rooms. Then you will add to the comfort of your guests by placing small tables—bridge tables are good—here and there in the dining room and adjoining rooms for the guests to sit at after serving themselves at the buffet table. Men, in particular, sometimes get tired of balancing a plate on their knees! Use your dainty bridge-table covers, napkins, and flat silver in setting up these tables. Or arrange the silver and napkins on the buffet table as suggested before. If these set-up small tables are going to be in the way while guests are arriving, you can push them back against the wall or set them up after the guests arrive. You will find the guests eager to help.

The next time you have a party, try the buffet-meal idea. Here's a menu, with recipes, to help you.

Spaghetti with Meat Sauce
Pickled Beets Crisp Celery
Assorted Breads Cauldron Punch
Individual Pumpkin Pies with Ice Cream
Demi-Tasse

CAULDRON PUNCH

(Tested by Good Housekeeping Institute)

4 c. cider 2 c. orange juice
1 c. seeded and halved 2 12-oz. bottles ginger ale
Tokay grapes Ice cubes
Combine cider, grapes, and orange juice. Add the ginger ale and ice cubes just before serving. Makes 8½ cups.

INDIVIDUAL PUMPKIN PIES

(Tested by Good Housekeeping Institute)

(Use Institute-approved measuring cups and spoons. Measure level.)

2 eggs, beaten ½ tsp. salt
¾ c. brown sugar 1 c. bottled milk or ½ c.
½ c. canned or evaporated milk and ½ c.
cooked pumpkin water
¼ tsp. ginger ½ c. cream or top milk
1 tsp. cinnamon Plain pastry

Combine eggs, brown sugar, pumpkin, ginger, cinnamon, and salt; mix well. Add the milk and cream, and stir well. Line seven 5" pie plates with plain pastry having a fluted edge. Fill each with ½ c. of the pumpkin mixture. Bake in a very hot oven of 450° F. for 15 min., then reduce the heat to 325° F. for 30 min. Serve topped with vanilla ice cream. Makes seven 5" pies.

Plan Now for a More Bountiful Christmas Next Year!



With Safety Insured Get

4%

On Your Funds

(Our Minimum Interest Rate for the Past 17 Years)

• Now that all accounts up to \$5000.00 are INSURED by an agency of the U. S. Government... why be satisfied with less than 4 percent! Come in and let us help you arrange for the transfer of your funds after January 1st without loss of interest.

This Emblem Guarantees Your Full Protection.



All Accounts Up to \$5000 Insured 100 Percent.

Torrance Mutual Building & Loan Association
"A HOME INSTITUTION FOR HOME PEOPLE"

1335 POST AVENUE

PHONE 423

Three Promoted by Directors of Columbia Steel

Promotion of three executives of Columbia Steel Company, subsidiary of United States Steel Corporation, was announced this week by William A. Ross, President.

They were J. R. Gregory, elected vice-president and general manager of sales; F. B. DeLong, vice-president in charge of sales, Los Angeles district, and the appointment of C. S. Conrad as assistant general manager of sales, manufacturing and construction accounts. The announcement was made following a board of directors meeting of Columbia Steel Company.

Gregory is a native of Chicago, Ill., and has been associated with the steel industry since 1911 when he joined the Illinois Steel Warehouse Company as salesman. When the old Columbia Steel Corporation was purchased by United States Steel Corporation and merged with the Pacific Coast department of United States Steel Products Company, Gregory joined the new firm as assistant general manager of sales.

DeLong was born in Sparta, Wis., and in 1909 started work as a topographer for the United States Geological Survey. In 1938 he joined the Los Angeles district sales office of Columbia Steel Company, as manager of the tubular, alloy and stainless department. A few months later he was appointed district manager of sales of Los Angeles.

Conrad who is appointed to succeed Gregory as assistant general manager of sales, manufacturing and construction accounts, was born in DeKalb, Ill. He started work with the Fairbanks Morse Company at Beloit, Wis. For a period he served with the United States government in the Department of Interior and in 1930 he became affiliated with National Tube Company, subsidiary of United States Steel Corporation and in 1932 was transferred to the sales department of Columbia Steel Company where he was shortly promoted to the position of San Francisco district manager of sales.

\$5 Increase Due Age Pensioners After January 1

Official notification that old age pensioners in California after January 1 will receive a maximum of \$40 per month in pensions, an increase of \$5, has been received by Los Angeles county supervisors.

The increase will cost county taxpayers but little, however, according to Rex Thomson, County Charities Superintendent, who states that it will be borne for the most part by the Federal government. Only in isolated cases will an additional cost fall on the county, Thomson states.

The notification from the State Board of Social Welfare gave further details as to deductions from the pension grants. Pensioners will not be deducted amounts equivalent to the rent on homes they own and also will be permitted to earn up to \$15 per month from their own labor without deduction.

This labor may consist also of raising food stuffs for themselves or for sale in gifts of cash or foods from others. In no case will the total amounts received by the aged exceed \$55 per month without deductions from pensions.

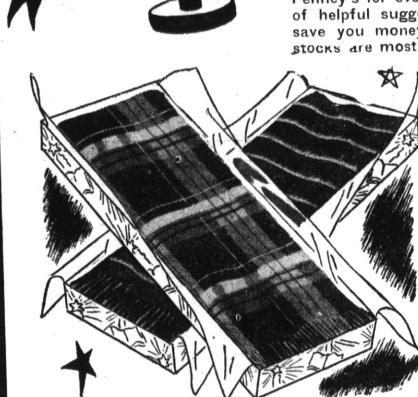
County Charities Superintendent Thomson state this week that approximately 1,000 cases per month are being added to the county's pension rolls at the present time. He declared that in the last six months his department had approved 5,924 pension applications.

Nebraska Wants Vivid Auto License Plate
CHRYSLER, Wyo. (U.P.)—Wyoming's famous "bucking broncho" license plates have caused concern among Nebraska officials. It was reported here, and the Cornhusker state is seeking a design to put on its automobile licenses which will bring the plains area the same publicity such a device has given the cow country.

The Wyoming license, which shows the silhouette of a cowboy mounted on a bucking horse, have given the state wide publicity and have been credited with stimulating the rapidly-growing dude ranch industry.

Nebraska highway officials have been toying with the idea of using a covered wagon design on their plates but have met with opposition from those who maintain the additional cost of stamping the design was abhorrent.

PENNEY'S GIFT GUIDE TO SAVINGS!



Save your time — save your energy — shop Penney's for every gift on your list! We've loads of helpful suggestions for you, ones that will save you money! So come in now, while our stocks are most complete, and look around.



MEN'S GLOVES
Imported pig-skins and capeskins! Unlined.
\$1.98



Men's Towncraft® BILLFOLDS
98¢

Only finest leathers used to make you a gift worth giving! In Morocco, calf, goat and steerhide — many handsomely tooled! His choice of slide fastener, hip fold and tailored styles. In attractive gift box.
*Reg. U. S. Pat. Off.



Boys' Western Style RODEO BELTS
49¢

Beauties to thrill all boys! Special chrome tanned leather, studded and jeweled in true cowboy style! In western-style gift box.



In Holiday Box! BOYS' SHIRTS
79¢

Packed with style and quality—just what your boy wants in every way! High count (80 square) percales with vat dyed FAST COLOR patterns!



Men's ROBES
All Wool
Wrap-around style.
\$5.98

Wee Kids SHOES
Fluffy shearling! Slide fastener!
\$1.00

PENNEY'S
J. C. PENNEY COMPANY, Inc.
1209 SARTORI AVENUE TORRANCE

Hey Kids! Santa Claus Will Be At Penney's Thurs., Fri. and Sat.



Ringless Gaymodes®
Sheer, clear chiffons or service weights.
8½-10½"
*Reg. U. S. Pat. Off.
79¢



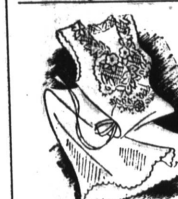
In Modern Wood Chest! STATIONERY
49¢

Practical! 12 sheets and 12 envelopes—and when they're gone—the smart box with acorn and walnut finish may be used for other things.



Women's Booties
\$1.98

WOOL FLEECE LINED!
They're kind to your ankles on chilly mornings and nights. And they're perfect to slip on after skiing! Soft kid with handsome furry shearing collar, and wool fleece lining. Leather soles!



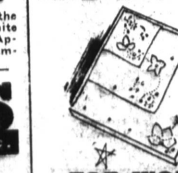
Rayon Crepe or Satin Trimmed Gowns
98¢

A lovely assortment of feminine, flattering styles. Bias cut—they fit beautifully! Shaped lace insets, edgings and braid trimmings make these outstanding gifts at less than a dollar!



Luxuriously Lovely BED JACKETS
98¢

Velvety brushed rayon that's so smooth and soft and comfortable! Some styles have hoods that defy drafts. Others have drawstring necks. Butcher boy and surprise styles, too! Wonderful for reading in bed!

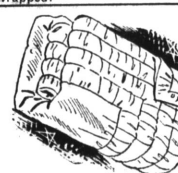


FOR WOMEN
Three in box! Embroidered cottons, linens! BOX
25¢



Ready to Wrap! Terry Towel 2 Wash Cloths
49¢

SET—Peek at her color scheme and give her a smart matched set for her bathroom! Fluffy, matching terry towel and 2 cloths in popular patterns and colors. Reversible! Border styles! Boxed or cellophane wrapped!



Exquisite Goose Down COMFORTERS
\$12.50

More soft, springy down than is used in ordinary comforters gives this beauty its billowy plumpness! Safe from moth damage because it's Premeo® (with Amuno®) mothproofed! Covered in fine quality lustrous rayon satin with elaborately worked trapunto center panel. The perfect gift for her! Gift boxed.
*Reg. U. S. Pat. Off.



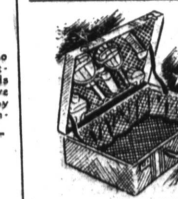
For The Holiday Table! For Busy Hostesses! LACE TABLE CLOTHS
\$2.98

You'll want one for your own entertaining—and it's a perfect gift for friends who give a lot of dinner parties! A closely woven lace cloth in a light creamy monotone. Popular full table size!



The Nicest Gifts of All! WARM ROBES
\$3.98

They have long sleek lines that give the illusion of slenderness to every figure. Your choice of fluffy cotton chenille in a wrap-around style with smart three-quarter length sleeves, or a slide fastener model in quilted rayon satin! In pale pastels and smart deep shades! 14-30.



Flat Handle Fittings! FITTED CASES
\$4.98

One of the handiest you've seen! Each case has 6 two-tone fittings, set in polished locks, three raggy pockets and lining of lustrous patterned rayon! Brown or grey woven stripes covering, or black shark grain simulated leather.