



## Give Furniture

When you add new Furniture to the Home, you bring happiness to all the family. Here at the STAR, you'll find large assortments in the latest styles in Living Room Suites, Bedroom Suites, Rugs and other major house furnishing items . . . all sold on convenient terms . . . as well as a great array of smaller articles for the home. May we suggest:

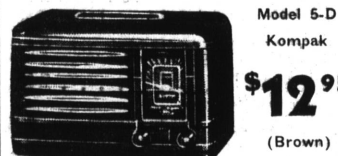
- |                |              |                   |
|----------------|--------------|-------------------|
| * CEDAR CHESTS | * DINNERWARE | * VACUUM CLEANERS |
| * DESKS        | * TABLES     | * TRICYCLES       |
| * STATIONERY   | * LAMPS      | * WAGONS          |
| * ROCKERS      | * ELECTRICAL | * DOLLS           |
| * OCCASIONAL   | * APPLIANCES | * TOYS            |
| * CHAIRS       | * GAS RANGES | * DOLL BUGGIES    |

### "The West's Largest Selling Radio"

**Packard-Bell**  
STATIONIZED DIAL

- \* BEAUTY You'll Admire
- \* TONE You'll Enjoy
- \* PERFORMANCE You'll Praise

#### "The Baby Aristocrat"



Model 5-D  
Kompak  
\$12<sup>95</sup>  
(Brown)

• America's greatest radio value. Amazing tone quality. Its relatively powerful 5-tube AC-DC superheterodyne chassis features a built-in "Lo-Static" loop antenna; automatic volume control; and dynamic speaker. Self-cleaning handle for ease in carrying from room to room; and STATIONIZED DIAL, Packard-Bell's exclusive dial which tunes directly to station names.

#### 5-DE DeLuxe

• New all-enclosed cabinet, leaving no unsightly and dust-catching chassis exposed. STATIONIZED DIAL. Five-tube AC-DC superheterodyne chassis with built-in "Lo-Static" loop antenna; automatic volume control; and dynamic speaker.

\$17<sup>95</sup>

#### 5-AE Standard

• Excellent tone quality and ample volume without distortion. Features a built-in "Lo-Static" antenna; broadcast and police wave band of 550 to 1700 kilocycles; automatic volume control; tone control; dynamic speaker; Push-button Tuning; and improved STATIONIZED DIAL. Designed for use with Television, phonograph, or microphone attachment.

\$23<sup>95</sup>

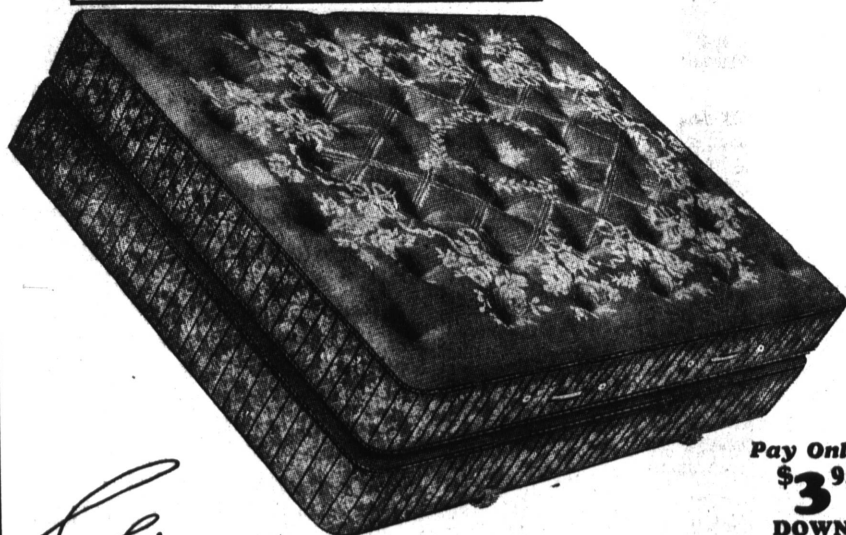
#### 5-AE DeLuxe

• Quality of tone and beauty of cabinet blend to make this new deluxe model an outstanding radio value. Offers all the latest Packard-Bell features listed for Model 5-AE Standard. Streamlined and acoustical Zephyr-louvers enhance the beauty of its distinctive lines and contribute greatly to its fine tonal quality. Designed for use with Television, phonograph, or microphone attachment.

\$26<sup>95</sup>

**STAR** Furniture Company  
Packard-Bell Headquarters

Here's a Christmas  
Gift that pays dividends  
every day of the year



Pay Only  
\$3<sup>95</sup>  
DOWN

Give a Beautyrest

Who wouldn't appreciate years of "Refreshing Sleep"

If you want to give something that pays a dividend every day of the year, we suggest the New, deeper Beautyrest Mattress. First, because it gives luxurious comfort night after night for years. Second, because it's an aid to sound, refreshing sleep; the

kind of sleep that makes one look and feel better. You may use our convenient budget terms. Come in this week and select a Beautyrest. We will hold it and deliver it any day you wish.

**STAR**

**FURNITURE CO.**  
SARTORI at POST  
Torrance Phone 625

## A Christmas Eve Supper

By Katharine Fisher

Director, Good Housekeeping Institute

Christmas Eve always has been for me the high point in the holiday festivities, a time when all our preparations seem to work up to an ecstatic climax. Tomorrow is Christmas! Everyone is hurrying away from work early, friends are dropping in with gay packages, and the familiar handwritings on the mounting pile of Christmas mail seem like friendly handclaps that bridge the miles between old friends.

There is usually some last-minute shopping to be done, and later, as the dusk descends over this great city, the tall Christmas trees at Radio City become jeweled with lights that shed their radiance on the festive choir singing the old, familiar Christmas carols. What a lovely Christmas scene it is! "It came upon a midnight clear"—we all join in the singing. The Christmas spirit has taken possession of us.

Usually I keep open house on Christmas Eve, but last year I spent it at the home of a friend. An informal supper by the fireside took the place of dinner, and my hostess has graciously allowed me to pass on to you her simple menu with the recipes. As she, too, always keeps open house on Christmas Eve, she decided on a one-dish casserole meal. (Casserole meals are so easy to serve and to keep hot, and a second casserole can be ready in the kitchen.) With this meal she served a delicious coffee cake, and mugs of steaming hot mulled cider soberly took the place of the ancient wassail bowl. For dessert there was fruit, and a delicious hot oven of 375° F. until 20 minutes, and here are the recipes which made it so delicious.

**TUNA FISH AND EGG CASEROLE**  
(Tested by Good Housekeeping Institute)  
Use Institute-approved Measuring Cups and Spoons. Measure level.

2 1/2 cups (2 c.) tuna fish  
2 tbsp. lemon juice  
4 sliced, shelled, hard-cooked eggs  
1 c. cooked peas  
4 tbsp. butter or margarine  
4 tbsp. flour

Drain the oil from the tuna fish and reserve. Flake the fish and add the lemon juice. Arrange the fish, eggs, and peas in alternate layers in a greased 1 1/2 qt. casserole. Melt the butter in a double boiler. Add the flour, then blend. Add the milk, seasonings, and cheese, and cook over boiling water, stirring constantly until thick. Pour over casserole mixture, and top with bread crumbs to which the tuna-fish oil has been added. Bake in a moderately hot oven of 375° F. until 20 minutes, or until the crumbs are a golden brown. Serve 6 heartily.

**BRESLAUER COFFEECAKE WHEELS**  
(Tested by Good Housekeeping Institute)  
Use Institute-approved Measuring Cups and Spoons. Measure level.

1 c. butter or margarine  
1 c. granulated sugar  
1/2 tsp. salt  
2 1/2 cups grated lemon rind  
1 egg, well beaten  
1 compressed yeast cake  
1 c. light sour cream

Cream the 1 c. butter, add the 1/2 c. granulated sugar, and cream thoroughly. Add the salt, lemon rind, eggs, and yeast cake, which has been dissolved in the sour cream. Blend well. Add the flour and mix thoroughly. Cover, and chill in the refrigerator for 2 hours. Remove from the refrigerator and let rise for 1 1/2 hrs. Then roll dough on a lightly floured board to about 1/4" thickness. Cover bottom of a 9" x 12" with the melted butter and brown sugar which have been floured. Roll up as you would a jelly roll, pressing the edges together firmly. Cut crosswise into slices 1/2" thick, using a sharp knife or scissors which have been floured. Arrange slices on top of butter and brown sugar mixture. Cover with a clean cloth and let rise in a warm place (75° to 85° F.) for 35 minutes. Bake in a moderately hot oven of 375° F. for 35 minutes. Serve warm. Makes 20 coffee cake wheels.

**MULLED CIDER**  
(Tested by Good Housekeeping Institute)  
Use Institute-approved Measuring Cups and Spoons. Measure level.

1 qt. sweet cider  
6 whole cloves  
2 whole allspice  
2" piece stick cinnamon

Mix all together and heat, stirring often, for about 15 min over low heat. Strain and serve warm. Serves 6.

## Church News

**NAZARENE CHURCH**  
Rev. W. A. Penner, pastor.  
20507 North Royal, Hammerton tract.  
Sunday school, 9:45 a. m. Morning service, 11 a. m. Prayer meeting, 7:30 p. m. Wednesday.

**LUTHERAN CHURCH**  
Frank D. Mechling, pastor.  
Acacia and Sonoma.  
Sunday school, 9:30 a. m. Morning service, 10:45 a. m. Topic: "Saints in Caesar's Household." Bible hour and prayer service Wednesday, 8 p. m. Choir rehearsal, 7:00 p. m. Wednesday.

**BAPTIST CHURCH**  
Rev. C. Miles Northrup, pastor.  
Carson and Martina.  
Sunday school, 9:45 a. m. Vernon Glidden, Supt. Dr. H. G. Mitts, Adult Dept. Supt. Morning service, 10:30 a. m. Topic: "The Temptation of Jesus." Special music by the choir. Directed by Charles Severin. Evening service, 7:30 p. m. Topic: "Conviction of Sin By the Cross." Choruses led by Don Kelley. Young people's meeting, 6:30 p. m. Prayer meeting and Bible study Wednesday, 7:30 p. m.

**FIRST CHURCH OF CHRIST, SCIENTIST**  
1208 El Prado.  
Sunday morning services at 11. Sunday school, 9:30 Wednesday evening meeting, 8 p. m. Reading room in church edifice.  
These words of the Psalmist, "All thy works shall praise thee, O Lord, and thy saints shall bless thee. They shall speak of the glory of thy kingdom, and talk of thy power," are the Golden Text in the Lesson-Sermon on Sunday in the Churches of Christ, Scientist. The question, "Is the Universe, including Man, Evolved by Atomic Force?" is the subject.

Paul's words to the Corinthians are included in the Lesson-Sermon: "For God, who commanded the light to shine out of darkness, hath shined in our hearts, to give the light of the knowledge of the glory of God in the face of Jesus Christ. . . . For which cause we faint not; but though our outward man perish, yet the inward man is renewed day by day. For our light affliction, which is but for a moment, worketh for us a far more exceeding and eternal weight of glory; While we look not at the things which are seen, but at the things which are not seen: for the things which are seen are temporal, but the things which are not seen are eternal."  
Among the passages from "Science and Health with Key to the Scriptures" by Mary Baker Eddy are the statements: "Man is, and forever has been, God's reflection. God is infinite, therefore ever present, and there is no other power nor presence. Hence the spirituality of the universe is the only fact of creation."

**FIRST CHRISTIAN CHURCH**  
Rev. F. T. Porter, pastor. 1415 Engracia.  
Sunday school, 9:30 a. m. Scott Ludlow, Supt. Morning service, 10:40 a. m. Topic: "Preparing For Christmas." Evening service, 7:00 p. m. Topic: "Ships and Submarines."  
Young people's meeting, 6 p. m. Bible study and choir Wednesday, 7:30 p. m.

**CATHOLIC CHURCH OF THE NATIVITY**  
Engracia and Manuel avenues.  
Rev. Fr. Joseph V. Fitzgerald, pastor.  
Masses Sunday 8 and 10 a. m., week days at 8 a. m. Devotions Sunday and Wednesday, 7:45 p. m. Instruction for children after 8 o'clock mass on Sunday. Adult instructions Tuesday and Friday at 7:30 p. m., at rectory, 1447 Engracia.

**GRACE TABERNACLE**  
1324 El Prado. Rev. and Mrs. L. W. Kolb, pastors.  
Sunday school, 9:30 a. m. Morning service, 11 a. m. Regular service Tuesday and Thursday evenings, 7:30 p. m.

**MEN'S BIBLE CLASS**  
Meets at 9:30 a. m. Sundays in Boy Scout hall on El Prado. Rev. Ben Lingenfelter, teacher. All men welcome.

## OBITUARY

**WILLIAM F. HANKINS** . . . a resident here for 17 years succumbed suddenly Saturday at his home, 1808 Arlington avenue. He was 52 years of age and was employed by the Pacific Electric. Mr. Hankins had been in poor health although he worked the day before his death. About a year ago he was confined in a Los Angeles hospital for some time. The funeral service was held Tuesday afternoon at Stone and Myers' chapel with Rev. C. M. Northrup officiating. Interment followed at Roosevelt Memorial park. Mr. Hankins was survived by a brother, Bert A. of Los Angeles.

**JESSE D. ROBINSON** . . . succumbed yesterday at his home, 4340 West 161st street at the age of 86. He was a native of Kentucky and is survived by his wife, Dora V. Robinson; three daughters, Miss Edna Robinson of 714 Border street, Mrs. Lena Leslie of Norman, Okla., and Mrs. Ethel Founders of Montebello; and four sons, Gus, Sam and Clarence, who reside at home and Jesse C., of Leedy, Okla. The funeral will be held tomorrow (Friday) afternoon at 2 o'clock at Stone and Myers' chapel with Rev. C. M. Northrup officiating. Interment will be at Pacific Crest.

**CHURCH BROADCAST**  
A Christian Science lecture will be broadcast Sunday, Dec. 17, at 3:30 p. m. over K. F. O. X. by Judge Samuel W. Greene, C. S. B., of Chicago, member of the Board of Lectureship of The Mother Church, The First Church of Christ, Scientist, in Boston, Massachusetts.

## POSTMASTER COMMENDS YULE SEALS

Indications point to a new high in the volume of Christmas mail to be handled through the Torrance post office this year, according to Postmaster Earl Conner. For this reason the plea is made that all packages be mailed at once, especially for eastern and middle-western points.

"It is gratifying to note that many Torrance residents are getting their holiday mail out early," states Postmaster Conner, "and also that the majority of letters and packages are generously covered with the familiar little Christmas Seal with the crimson double-barred cross which helps to finance the program of tuberculosis prevention carried on by the Los Angeles County Tuberculosis and Health Association."

As postmaster, I am particularly interested in the Christmas Seal which was originated in 1903 by Einar Holboell, a postal clerk in Copenhagen, Denmark, for the purpose of raising funds for children suffering from tuberculosis. The Christmas Seal has since encircled the world and is being used in the United States to help finance tuberculosis preventive work in every state in the union.

"I should like to see every piece of mail going out through this post office decorated with Christmas Seals, except on the address side, which must be left free of any stamp other than that of the post office department."

Residents of Torrance who desire additional Christmas Seals or did not receive them through the mail can secure them locally at the Torrance Health Center.

**UNLUCKY 13**  
December with its rain and early darkness requires extra caution on the part of both motorists and pedestrians. That 13 was unlucky for motorists and pedestrians last December is seen in the National Safety Council's figures of 3,420 killed in traffic during that month—one every 13 minutes!

**ASSEMBLY OF GOD**  
Rev. John Makinson, pastor. 1015 Borer.  
Sunday school, 9:45 a. m. Morning services, 11 a. m. Evening service, 7:30 p. m. Young people's meeting, 6:30 p. m. Services Tuesday and Thursday nights at 7:30 o'clock.

**METHODIST CHURCH**  
Harry C. Banks, pastor. El Prado at Carson.  
Sunday school, 9:45 a. m. Morning service, 11 a. m. Quarterly Communion service and reception of members. Evening service, 7:30 p. m. sacred musical program by the Melody Male Quartet.

Young People's Junior High Epworth League meeting, 8:30 p. m.  
Wednesday, Dec. 20, Christmas Fellowship dinner. Saturday, Dec. 23, church Christmas program, play, reading and gift exchange.

## PRE-CH SALE

## IDEALR Meat Pri

but is your present NOT! Why should you pay LESS? Remember . . . the same . . . whether he buy save you money!!

## STEAK

**BABY LAMB LEGS** GENUINE 1939 SPRING LAMB, SAME KIND YOU PAY UP TO 25% PAY CASH AND SAVE

**PORK LOIN ROAST** GENUINE GRAIN PORK, SAME KIND YOU PAY UP TO 25% PAY CASH AND SAVE UP TO 50%

**SWEET PICKLED HAMS** FOR MAKING VIRGIN STYLE BAKE

## BACON

**BABY BEEF ROAST** YOU CAN'T OWN QUALITY AND YOU CAN BEAT OUR

**PORK NECK BONES** EXTRA AND ME BONES SAUER

**FRESH GREEN SHRIMP** THINK BY ARE YOU FOR GREEN NOTE OUT

## PUR DE

**BULK SAUER KRAUT** NORTHERN 90% KRAUT 10% BRINE

**2 LOAF AMERICAN WISCONSIN NO. 1 QUALITY CHEESE**

**ARMOUR'S MINCE MEAT** QUALITY MADE BY ARMOUR

**JACK CHEESE** NO. 1 QUALITY FULL CREAM

**IMPORTED**