

Saul Shoe Company Stock ORDERED SOLD

BY SAN FRANCISCO LIQUIDATORS
\$6000⁰⁰ Stock Slaughtered
REGARDLESS of COST

FIXTURES for SALE

STORE for RENT

This Brand New Stock of Men's, Women's and Children's Shoes augmented with another fine stock of shoes from one of California's finest stores to be sold at public sale regardless of former cost or selling prices at such drastic reductions that perhaps never again may you have such an opportunity. So come prepared to buy all your needs now, the more you buy the more you save, as most items are being sold for less than cost of replacement. Tell your neighbors and be here when the doors open at 9 a. m.

SALE STARTS TODAY AT 9:00 A. M.

Nationally Known Brands at About 1/2 Price

WOMEN'S SHOES



GROUP 1

Values to \$2.49

BROKEN LINES
BETTER GRADE
FOOTWEAR
FOR LADIES

69¢

GROUP 2

Values to \$3.95

a wonderful selection of black, gray, white pumps, T straps, Cuban and high heels.

NOW 98¢

GROUP 3

Values to \$4.95

grouped together in this lot are Crepe Sole Oxfords, High grade arch support shoes in brown and black and a most wonderful selection of growing girls' oxfords.

NOW \$1.48

XMAS SLIPPERS

A wonderful selection of slippers.

NOW 39¢

LADIES XMAS SLIPPERS

Blue and Burgundy Booties

NOW 97¢

MEN'S SHOES



GROUP 4

Values to \$2.98

In this group you will find black calfskin oxfords for men and boys and good sturdy work shoes in high and low.

NOW \$1.59

GROUP 5

Values to \$5.00

Brown and black calfskin oxfords, wing tips, plain toes, straight tips, all made over combination lasts.

NOW \$2.49

GROUP 6

Values to \$7.50

All Brown Bilt, Roblee and Jolly Stride oxford and high shoes in brown or black.

NOW \$3.88

GROUP 7

Values to \$3.50

Men's rubber boots, knee height, heavy red sole.

NOW \$2.29

GROUP 8

Values to \$1.00

BOYS' TENNIS SHOES

NOW 49¢

Women's & Children's GALOSHES

Values to \$1.49

Cuban or low heels.

NOW 79¢

CHILDREN'S SHOES



GROUP 9

BABY SOFT SOLE
SHOES

While they last!

NOW 19¢

GROUP 10

Values to \$1.50

Children's High Shoes in white and black, patent leather straps. White kid straps.

NOW 69¢

GROUP 11

Values to \$2.50

Misses and Children's School Oxfords and straps in black or brown. Sizes 8 1/2 to 3 in lot.

NOW 98¢

GROUP 12

Values to \$2.95

Nationally advertised Red Bird and Play-Pal School Shoes.

NOW \$1.49

ALL HOSIERY
About 1/2 Price

MEN'S and BOYS'
RUBBERS

Values to \$1.25

NOW 79¢

Migrant Problem Topic Before Church Women

Because Californians are aroused over living and economic conditions as depicted by John Steinbeck in his best-selling novel, "Grapes of Wrath," members of the Missionary Section of the Woman's Council of the First Methodist Church of Torrance have arranged for a special lecture at 2 o'clock tomorrow afternoon in the church parlors on the comprehensive subject, "Four Sides of California's Migrant Problem." Guest speaker for the occasion will be Mrs. C. C. Douglas of Los Angeles, well-known authority on this state's ever-increasing migratory problem, and distinguished lecturer on the subject. The public is invited to attend.

California, believes Mrs. Douglas, must not be branded as a state encouraging and fostering the unbelievable squalor, filth, misery and ignorance now existing in the camps of "fruit tramps." Therefore, living conditions of the midwest transient workers harvesting the fruit crops in and around the Santa Clara and San Joaquin valleys must be elevated from the starvation wages and subsequent low economic conditions of the Dust Bowl migrants.

It is up to home missionaries to remedy these conditions by first gaining an accurate word picture of the actual conditions as they exist today, she contends. Mrs. Douglas also plans to explain the outline of her proposed clinic for the children of migratory families.

In addition to Mrs. Douglas' talk, members of the group have also arranged for the society's annual Christmas shower for their home missionaries. Distribution of the gifts will be made later in the month, according to Mrs. Grace Hooper, president, who will preside at the session.

Concluding the meeting a colorful holiday tea will be enjoyed with members of the entertainment committee serving.

BUSINESS WOMEN PLAN YULE DINNER

Plans for the annual Christmas dinner of the National Business and Professional Women, Torrance unit, were advanced at Monday night's meeting of the group held in the Nurses' Home. Mrs. Lola Hoover, president, presided over the session, and named the dinner date for Dec. 18 at McDonald Hall. She was also appointed special hostess for the occasion.

Replacing Miss Lute Fraser, who suffered a slight foot injury, this week and because of that was not able to attend the meeting and conduct the parliamentary law class, Mrs. Hoover took over leadership of the course.

Russian Prima Donna To Be Guest Speaker At Friday Club Meet

Colorful and timely will be the December meeting of the Friday Morning Club, scheduled to be held at 2 o'clock tomorrow afternoon at the West Torrance home of Mrs. Hugh Herring, C. C. M. O. district, when Madam Maria Karinska of Hermosa Beach, one-time Russian prima donna, is introduced as special speaker. Madam Karinska plans to tell something of the history and present-day conditions of Russia together with a short resume of her life story, and will highlight both by light, descriptive musical selections and operatic arias of her native land. President Mrs. James H. Crumrine is to preside over a short business session.

In keeping with the holiday season, Mrs. Herring has planned a short Christmas festival, which is to include group singing of Christmas carols, exchange of gifts and festivities around a gaily decorated Christmas tree. Refreshments expressing the seasonal motif have also been planned.

C. KELTONS FETE FRIENDS SUNDAY

Complimenting Mr. and Mrs. Edward Arnold Sharpe of San Pedro on the occasion of their 26th wedding anniversary, Mr. and Mrs. J. Ward Jennings of Los Angeles on the celebration of their 10th wedding anniversary, Mr. and Mrs. Charles Kelton were dinner hosts Sunday afternoon at their home, 720 Border avenue.

The table, attractively appointed with a large, graceful centerpiece of pink and white carnations, contrasted effectively with the gleaming yellow linen and harmonizing table ware used by Mrs. Kelton for the occasion.

In addition to the honored guests, places were laid for Herbert J. Martin and Susan Beech Martin of Santa Monica, and for Mrs. Francis A. Burns and baby daughter, Katherine Jean, of Annapolis, Md.

LUCKY CLUB PLANS CHRISTMAS PARTY

A gala Christmas party is being planned by members of the "Lucky Club" for Dec. 13, according to Mrs. Merton Gilbert, president. This week the group is concentrating on completing arrangements for the fete and putting the finishing touches on sewing projects for the holiday season.

LUTHERAN LADIES PLAN TRIPLE EVENT

A festive Christmas party, election of officers for the 1940 term, birthday celebration and regular business meeting combined to make the monthly session of the Lutheran Ladies Aid Society this afternoon one of the most outstanding events on the society's calendar.

A tree celebration and exchange of gifts featured the Christmas fete, while all members of the group who had birthdays from July through December were honored at a special "Birthday Table." Tapers, gaily-colored birthday cakes and individual remembrances completed that portion of the program.

Election of officers was presided over by Mrs. Earl Conner, retiring president. Chairman of arrangements for the event was Mrs. Leell Kerber. Assisting hostess were Mrs. Ada Luedke of Lomita and Mrs. Norma Anderson and Mrs. Conrad Benzel, both of Torrance.

'COUNTRY COUSINS' TO BE HERE SUNDAY

"The Comical Country Cousins" will arrive in Torrance promptly at 8 o'clock Sunday night, and will take their abode for the evening in the auditorium of the First Christian church, according to members of the intermediate and high school classes of the church who are putting on an amusing play-let under that title.

Cast in character roles are Marie Peer as "Aunt Ophelia," Dorothy Intermill as "Sukey," Doris Dillard as "Mollie McGinty," Lois Jane Allen as "Cecilia," Jacky Gibson as "Sarah," Jacky Rathbone as "Jane," Peggy Ishman as "Delia," Mary Intermill as "Samanthy" and Margaret Svensen as "Sis Hopkins." The public is invited to attend without charge.

BIBLE CLASS TO INSTALL OFFICERS

Installation of officers for the 1940 term, Christmas tree exercises, an exchange of gifts and a special musical and entertainment program will highlight the gala Yuletide party to be given by members of the Loyal Bible class of the First Christian church in the church parlors at 7:30 o'clock tomorrow night.

New class officers who will be inducted into office include Mrs. Emma Horton, president; Mrs. Harris, vice-president; Mrs. Eliza Travoli, secretary; and Mrs. Emma Merriam, treasurer.

NURSE FETED AT SURPRISE SUPPER

Miss Goldie Gordanier was made the honoree at a jolly informal after hours surprise birthday supper given jointly last week in the diet kitchen of the Torrance Memorial hospital by a group of nurse friends on the hospital's nursing staff. Two

Gala Crowd Attends Festive Yule Party At Woman's Club

More than 70 members and out-of-town friends of the Torrance Woman's Club attended the annual Christmas party held yesterday afternoon in the clubroom. The luncheon table was made festive with a clever treatment of poinsettias, red tapers and luxuriant pine sprays. Individual Christmas candle favors completed the motif. Luncheon hostesses-of-the-day were Mrs. John Keifer and Mrs. Merle Johnson.

Preceding the musical portion of the program, members and guests enjoyed a jolly gift exchange around a beautifully decorated tree. Christmas carols, led by Mrs. P. G. Briney, with piano accompaniment by Mrs. Leonard Babeck, completed the Yule festivities.

Federation reports submitted by department heads brought the business session to a close. Mrs. A. H. Silligo, president, presided. The program, arranged by Mrs. Julia Neelands, included a number of out-of-town artists, all friends of Mrs. Neelands.

She presented Mrs. White of Los Angeles, in a group of two contralto solos; Celeste Murray in an interpretative soft shoe dance number, Gordon Lewis, baritone, and George Malloy, pianist.

According to Mrs. Silligo, there will be no pot-luck luncheon this month. Next meeting of the club has been scheduled for Jan. 3.

BESSIE MYERS HONORED AT SURPRISE HOUSEFETE

Twenty-six friends surprised Mrs. Bessie Myers Tuesday night with a housewarming at her new home on Post avenue. Following presentation of a handsome fireside gift table, the group enjoyed rounds of bridge and Michigan. Holders of high and low tallies at the bridge tables were Mrs. Robert Lewellen and Mrs. Sidney Smith. First and second prizes for Michigan were awarded to Mrs. Tom Watson.

Invited to take part in the delightful surprise event were Mesdames L. G. Barkdull, H. F. Robinson, Robert Lewellen, Lytle Dean, Robert Sleeth, Caroline Collins, Clara Dunbar, Elmer Patterson, Ruth Saunders, Tom Watson, Dewey Gaddard, Carl Marsteller, Baker Smith, Clarence Youngkon, George Thompson, Mabel Williams, Ronald Lee, Janet Woodington, Edith Woodington, James R. Wilkes, Lon Ealston and Miss Corlita Reeve. Refreshments in keeping with the theme of the occasion were served.

Cakes and several large boxes of gift candy added to the festivity of the event.

The Herald—3 months, 50 cents.

PLAN TO ATTEND THE ALUMNI ASSN.

NEW YEAR'S EVE BALL

At HOLLYWOOD RIVIERA CLUBHOUSE, Dec. 31
Favors! Sweet Music! \$1.25 per Person

Santa Always Pays Off to Christmas Club Members

He's always here at "Your Community Bank" with a handy check right after Thanksgiving for our Christmas Savings Club members.



Why don't you prepare now for next year? Save a small amount each week in our Club for next year's gift buying.

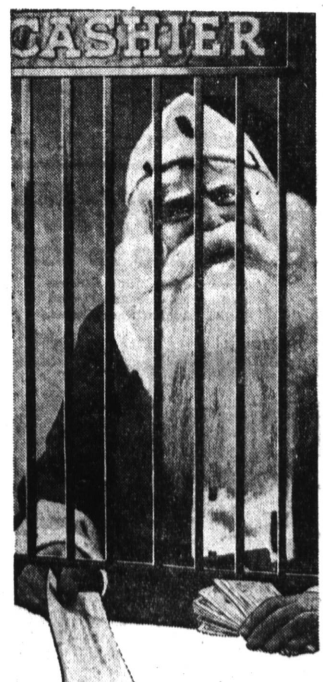
BANISH TAX WORRIES!—Many property owners use this convenient method of saving money for taxes and thus avoid reduced Christmas Budgets.

Enroll Now for 1940

TORRANCE NATIONAL BANK

MEMBER
FEDERAL DEPOSIT INSURANCE
CORP.

MEMBER
FEDERAL RESERVE
BANK



Ratner &
Zeder
Liquidators
In Charge

SAUL SHOE Co.

1119 SARTORI AVENUE

—TORRANCE—

Opposite Star Furniture Co.

CASH
REGISTER
FOR
SALE