



IDEAL RANCH MARKET

SHOP DAILY 8 to 8
ALL DAY SUNDAY!

100% UNION MEAT MARKET — OPEN 8 to 6
DAILY! — DELICATESSEN FROM 8 to 8 DAILY!

2067 Torrance BLVD.

SATURDAY, SUNDAY!
DAY ARMISTICE DAY!

17 1/2 lb

THING CHEAP
AT IS THE

25

12 1/2 lb

14 1/2 lb

9 1/2 lb

17 lb

YEAR

6 1/2 lb

15 lbs.

15 lbs.

STRING BEANS No. 2 CAN
PEAS No. 2 CAN
RED BEANS No. 2 1/2 CAN
SPINACH No. 2 1/2 CAN
CATSUP MONTARIO 14 Ounces
PEAS and Carrots No. 2 CAN
HOMINY No. 2 1/2 CAN
Spaghetti or Macaroni 1-Pound Package

7 1/2 ea

TOMATOES No. 2 1/2 CAN
TOMATO JUICE ARMOUR'S 20 oz. CAN
CATSUP VAL VITA 14 oz. CAN
PUMPKIN No. 2 1/2 CAN
KRAUT No. 2 1/2 CAN
SPAGHETTI 22 ounce CAN
IVORY SOAP LARGE
HEINZ SOUP ASSORTED 10-oz. CAN

3 FOR 25

Mince Meat 23
Brandywine
2 lb. Jar



Quarts ... 9
Pints ... 5

Egg Noodles
1 lb. Cello Pkg.
2 Pkgs. 23

LUX FLAKES
REGULAR 9c
LARGE 20c

Tomato Sauce
Montario Brand
4 For 10

PEACHES
Clings - No. 2 1/2 can 9 1/2

LIFEBUOY
FOR B.O. PROTECTS HEALTH
3 for 17c

Sunmaid Seedless RAISINS 15 oz. Pkg. 5 1/2

Eggs
LARGE FRESH 34c
MEDIUM FRESH 27c

RINSO
WASHES CLOTHES SPARKLING WHITE
REGULAR 8c
LARGE 20c

Lighthouse Cleanser 3 For 9

MARGARINES
Dinner Bell
Silver Nut
Golden West 12

LUX SOAP
ACTIVE LATHER
FOR COMPLEXION
3 for 17c

SANI-CLOR Bleach
3 lbs. 48c
1 lb. 18c
1/2 Gal. Bot. 13
2c Deposit on Bottle

FANCY
RUSSET Potatoes
10 lbs.

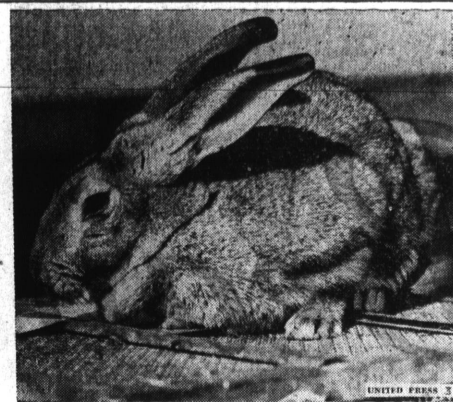
9

Fancy Red
YAMS
3 lbs.

Winesap Eating
Apples
6 lbs.

Arizona
GRAPEFRUIT
12 FOR

10



FIRST FATHERLESS MAMMAL ... This rabbit exhibited at New York Academy of Medicine, first mammal ever created by man, has no father. Salt solution in test tube fertilized cells from mother which were transplanted to another female. This offspring is female, but incapable of reproduction.

VOTERS HERE BEAT HAM 'n! LOMITA SUPPORTS PENSIONS

(Continued from Page 1-A)
given a majority in four Lomita precincts—No. 2 at 24708 Cypress, No. 5 at 25701 Eshelman, No. 7 at 26111 Oak and No. 8 at 25047 Pennsylvania.

Walteria's one precinct, polling place at 24438 Park street, turned down 30 Thursday by a vote of 203 to 157.

Ham 'n' Loses Flavor
Comparison of the returns of Tuesday's election with those of the Nov. 8, 1938, vote showed that Ham 'n' Eggs apparently lost their flavor among local voters. Last year 274 more votes were cast for the pension plan than were balloted this week and there were 606 more votes against the measure Tuesday than the number who negated the proposition a year ago.

The surge of voters to the polls here and in Lomita resulted in the greatest number of ballots being X-ed in the history of the two communities. Late reports indicate that the entire state responded in about the same fashion to the call to vote on the five propositions. Last year's election drew a 76 percent vote here while 75 percent of Lomita's electors went to the polls.

No. 2 Sets Record
First local precinct to report at the city clerk's office Tuesday night with its tally complete was No. 7, located at 1414 Cota avenue where 261 voted. The count from this poll was in at 8:37 p. m. The first Lomita pre-

dict workers to complete their job came from No. 3, located at 24608 Oak street. They turned in their material at 8:51 p. m. Last group of election workers to finish reported at 12:24 a. m. Wednesday. They were at Torrance Precinct No. 2, located at 1615 Cedar avenue, where the largest number of voters appeared in this district. A total of 432 ballots had to be counted there.

Typists Pounding Out Tax Postcards to State Motorists

At the rate of 40,000 postcards per night, a special crew of typists in Sacramento is rushing the huge task of notifying California's motorists of the tax amounts due for their 1940 license plates.

There were 2,592,000 registrations at the end of September, a gain of 99,000 over the same date a year ago. The physical task of getting the cards filled out and mailed has to be started almost five months before the plates are issued. Some of the girl typists have become so proficient they can fill out 1,000 cards per night.

Tenants, including sharecroppers, operated 42 percent of all farms in the United States in 1935, as compared with only 25 percent in 1880, according to a recent AAA report.

P. E. Employees Oppose Changes In Rail Service

Taking the position that "development of Los Angeles and neighboring counties will be greatly advanced by the establishment of a highly coordinated modern passenger, express and freight transportation system" to serve this area, Pacific Electric Railway employees have come out in vigorous opposition to the railway's petition for widespread changes in its service. This action was taken at a recent mass meeting of employees and the General Grievance Committee of the Brotherhood of Railroad Trainmen has been authorized to carry on the opposition for the time being. The Committee has published and widely circulated a pamphlet dealing in detail with the subject.

Particular opposition is expressed by employees to the railway's application for the Commission's authority to abandon certain important rail lines which it now operates. According to their pamphlet, the employees hold that these rail lines may easily prove to be the necessary basis for a high-speed transit system tying together the numerous communities in Los Angeles, Orange, Riverside and San Bernardino counties. Motor coaches are approved by the Committee for feeder service to the rail lines and also to serve territories not now served by rails.

Hearings on the carrier's application are continuing at the State building. The employees' committee is urging all interested municipalities, organizations and individuals to attend them and to join the committee in formulating a transportation program to meet the needs of this territory.

BUS SURVEY PROVING NEED FOR TRANSPORTATION
As late returns are received concerning the response to the Torrance bus questionnaire, it is apparent that local residents are aware of the need for transportation facilities to and from Los Angeles. The survey is being made by canvassers covering the entire city to compile information for the new Torrance city directory.

When complete, the results of the bus survey will be turned over to the city council for study and action. It is understood that the city of Gardena, which will lose its passenger rail route to Los Angeles the same as Torrance when the P. E. abandons its service in this area, is ready to launch a municipal bus system at any time.

Fall From Stand at Game Seriously Injures Ray Dean

Ray Dean, loader at the Columbia Steel Co. rolling mill warehouse is in a critical condition in the Los Angeles General Hospital as the result of internal injuries sustained last Sunday in San Pedro. Dean, who attended the Navy ball game at Recreation Park in the port city, accidentally fell from the bleachers. He lay for some time in an unconscious condition before he was found by sailors. After being given first aid, he was rushed to the General Hospital.

Dean has been an employee at Columbia Steel for a long time and his many friends here were shocked to hear of his misfortune. Dean lives with his wife and three children in Redondo Beach.

Palos Verdes Peas Need Rains Now

November rains are needed to produce good yields of dry-farmed peas in the Palos Verdes Hills, according to the monthly report of the county agricultural department.

Harvest of this year's crop, around 500 acres, is expected to begin about Nov. 15, with indications of a good yield up to the first of the month.

Practically all of the late tomatoes are being sold to canneries this fall, with prices declared to be better than last year, although the percentage of No. 1 grade has been lowered by adverse weather of last month, as far as this crop is concerned.

TOO LATE TO CLASSIFY

REAL BARGAINS IN REAL ESTATE
8-Room Home on Post Ave.: \$2500 Cash
6-Room Duplex—1 and 2: \$2500 Cash
2 Lots: 45x150; located in Hammett Tract \$150 Cash, Each
L. J. MUMFORD
TORRANCE INVESTMENT CO.
1409 Sartori, Tor. 176

\$85.00—5 room new house. Water paid and yard cared for. 1218 Cota.

YOU CAN'T SKID THEM ON WET STREETS!

The Sensational New
Firestone
TRIPLE-SAFE
CHAMPIONS

Real CHAMPIONS in performance! The sharply angled edges of the tread CLEAN the pavement and CRIP RIGHT NOW!—bringing you to a safe, smooth stop.

Special 2 DAY Free TRIAL

You don't have to take our word for the performance of these Champions! We'll mount a set on your car—you can drive under any and all conditions—test them for Skid Protection, Stopping Power, Quietness and Easy Steering! If, after 2 days, you're not convinced that they're the GREATEST tires you've ever used, we'll gladly refund your money!

SAFETY PROVED ON THE SPEEDWAY FOR YOUR PROTECTION ON THE HIGHWAY



BUY NOW • GET 30% More MILEAGE

Firestone

AUTO SUPPLY AND SERVICE STORES
CRAVENS and MARCELINA Torrance Ph. 476