

## Trees Down and Derricks Collapse

(Continued from Page 1-C)  
Dairyman Witz was sitting in a car in the driveway. The derrick barely missed falling on this machine. The Misses Frida and Henrietta Witz returned about four weeks ago from a summer's visit with their mother in Switzerland.

**Phone Lines Damaged**  
The Torrance telephone exchange reported Monday that 39 telephones were put out of service here as result of the storm. With its full force of 2,500 plant repairmen in the field, the telephone company made every effort this week to restore service to approximately 26,000 phones affected by the rain and wind.

About 14,300 telephones were out of service in Los Angeles and about 11,700 in other Southern California exchanges, Mrs. O. V. Peltzke, manager of the local exchange reported.

## Pittance Buys Life's Luxuries In Zara, Italy

ZARA, Italy (U.P.)—The 22,000 people who live in this Italian city on the eastern shores of the Adriatic sea probably pay less for luxuries than any people in the world.

In Zara gasoline costs five cents a gallon, American cigarettes 8 cents, and movies 10 cents. Cherry brandy or Maraschino brandy, made here, costs 10 cents a fifth, while the best brands of whiskey can be bought for 80 cents a quart. A nickel will buy two pounds of spaghetti.

Comprising less than 15,000 acres and surrounded on three sides by Yugoslavia, Zara entered upon its career as a Scotchman's paradise in 1919 when the Italian government decided to make it a tax-free city. American cigarettes and high grade alcohols soon became Zara's principal industries and the local citizenry, although they earn no more than workers in other Italian towns, live like veritable millionaires.

**COUNTY CAR TOTAL**  
Los Angeles county has more motor vehicles registered than Washington, Oregon, Arizona and Nevada combined.



OPEN DURING FROLIC

E. J. Ponso, central office repairman, and Jane Roberts examining the distributing frame at which wires from all of the telephones in the Torrance exchange are sorted out for connection to the switchboard. Visitors to the telephone building during the Factory Frolic will have an opportunity to inspect the equipment.

With longer visiting hours and different displays than last year, the Southern California Telephone Company today renewed its participation in the Torrance Factory Frolic.

Mrs. O. V. Peltzke, manager, said that guides were on hand at 9 o'clock this morning to conduct visitors through the building and explain the operations of the switchboard and the other central office facilities and to describe the exhibits.

Chief among the exhibits this year is the "Hear-Your-Own-Voice Demonstration," which enables a person to hear how his voice sounds over the telephone.

Another display shows different types of cable used in building the voice highways which extend to all parts of the country.

### BANDS TO PLAY

In addition to the fine Torrance Municipal band, the Glendale-Kiwanis Boys' band will give concerts during the Frolic.

## Murray Sole 'Overall Boy' at Council Session

Only member of the city council to appear in full Factory Frolic regalia—even to a red bandanna handkerchief knotted about his neck—at the Tuesday night meeting was Councilman John V. Murray. All the others were garbed in their usual civvies.

## City Fire Apparatus Said Better Than in San Francisco

San Francisco's fire department has some well-trained men but its equipment is not as good as Torrance's. This was the observation of Fire Chief J. E. McMaster on his return last Thursday night from attending the Pacific Coast and International Association of Fire Chiefs' convention at the bay city last week. Next year the combined convention will be held in Tacoma, Wash., he said.

### DRAW LIBRARY PLANS

Tentative plans and a cost estimate for the proposed new library building in Waverly were ordered of City Engineer Leon and Young by the city council Tuesday night at the request of the library board. No site has been selected as yet for the new building.

## Law Limiting Store Hours Held Unenforceable

Because the legality of the measure is highly doubtful and its enforcement regarded as "almost impossible," the city council Tuesday night shelved the petitioned request of some 52 clerks, managers and owners of retail food stores for an ordinance limiting store hours here.

A large number of those who signed the petition two weeks ago were in the audience but none made any comment concerning the tabling of their recommendation during the course of the discussion by City Attorney John E. McCall and Mayor William H. Tolson. The clerks, managers and owners' petition asked adoption of an ordinance limiting food store hours between 8 a. m. and 6 p. m., except Saturdays, when the shops could remain open until 8 p. m., and closed every Sunday and all legal holidays.

These have been the voluntary business hours here in the past but this "healthy condition" according to the petitioners, "is threatened by the entry of such a business as will compete with present food stores by keeping open at all times, which will force all food stores to remain open at all times."

**Advised by Experts**  
City Attorney McCall told the council and the storemen present that he had taken the suggested ordinance up with other city attorneys attending the California League of Municipalities' convention in San Francisco last week and all advised him that it was a troublesome piece of legislation and could not be enforced.

Mayor Tolson reported he had consulted Louis Burke, counsel for the league, and that authority on municipal legislation declared such a law had been "tried in a number of places in the state and found faulty."

"Just this year such an ordinance was held unconstitutional by the state supreme court," according to Burke, who also told the mayor "it would mean trouble for your city in the future."

### RETAINS HOME TIES

Give your college son or daughter a subscription to The Herald.

## Local Artist Has Sketching Booth at Frolic

Some of the finest portrait sketching ever to be shown here as the work of a local artist is on view at a Factory Frolic stand opposite the Civic Auditorium. The artist, Cheri Riley, will do portraits of all comers—either "straight" or in caricature—for a small fee.

Mrs. Riley, who has been drawing "since I was big enough to hold a pencil," has a number of portraits of local people on display to show what she can do. Using sepia tones and laying an excellent judgment of highlights, she imparts a life-like touch to her work. Mrs. Riley studied caricature under Ed Hanna, noted Long Beach cartoonist.

## Crash Victims File Damage Suit Against P. E.

A suit by Jean Barney and Elone Caughlan, both said to be residents of Torrance, named the Pacific Electric railway company was at fault in maintaining its tracks on the wrong side of the street on Catalina avenue in Redondo Beach.

Damages for injuries incurred by the two women in an accident last July total \$215,000. Their auto collided with a P. E. car.

The accident occurred between Emerald and Garnet streets on Catalina avenue. Mrs. Barney was the driver and Mrs. Caughlan, a passenger. As result of the accident, it is stated in the complaint, Mrs. Barney lost the sight of her right eye and with the other already blind, rendered totally sightless. Mrs. Caughlan suffered nervous shock, it is alleged in the complaint.

### RENEW INSURANCE

Insurance on the city's auto fleet was ordered renewed as of Oct. 13 with Wallace H. Gilbert and Howard Locke by the city council Tuesday night.

### Fresh Dressed POULTRY

• BUY DIRECT FROM RANCH • See It Killed and Dressed • then you know it's fresh. BROILERS — FRYERS — TURKEYS ROASTING HENS — RABBITS  
**Trunnell's Poultry Ranch**  
25322 OAK ST., LOMITA Phone Lomita 25

## NAVY REVISES RECRUITING

Revised U. S. Navy recruiting instructions are now permitting the enlistment of men under the following conditions. The Herald was informed this week by Commander E. P. Sauer, officer in charge of the station in Los Angeles:

**FIRST ENLISTMENTS:** (a) Age limits 18 and under 31. Term of enlistment is six years. (b) Ex-members of the Army, Marine Corps and Coast Guard with creditable discharges (by reason of expiration of term of service or convenience of Government) may be accepted for enlistment even though they have been out of service over three months, provided they are under 35 years of age.

**RE-ENLISTMENTS:** (a) Broken service men, discharged under honorable conditions, who are in all respects qualified and have been out of service less than 8 years will be accepted in the same rating as that held at time of discharge. The term of enlistment is four years. (b) Men out of the Naval service more than eight years and who are less than 35 years old will be accepted as seamen first class or firemen second class. The term of enlistment is four years. (c) Cases of men who have been discharged by Special Order will be referred to the Bureau.

### Fireproofing Curb Firemen

BERKELEY (U.P.)—Firemen here are discovering that fireproof roofs, present new problems. Answering a call when the roof had been treated with a fire-proof material, they discovered that the flames inside the house could not burst thru the roof, with the result that such great billows of smoke poured thru the doors and windows firemen could approach only with gas masks.

Your Silent Salesman that never sleeps—a Herald want ad.

## Wet Lime Causes Fire at Steel Plant

Hoping to get the shipment unloaded late Monday afternoon before it was completely lost, Columbia Steel workmen opened the door of a box car of lime that was smoking because it had become wet in Sunday's rain storm. But a blaze resulted when air struck the mixture and caused considerable damage before it was extinguished by the fire department.

The Herald—3 months, 50 cents.

Your Silent Salesman that never sleeps—a Herald want ad.

## When You Get Hungry During The Factory Frolic

**DON'T FORGET**  
Cherry Blossom Chop Suey Parlor  
1314 Sartori • Torrance

## A&P Food Stores

<b>STEAKS</b>	ROUND, SWISS	27¢
	GROUND ROUND	
<b>TURKEYS</b>	YOUNG HENS OR TOMS	25¢
	Fancy, Fresh-Killed	
<b>Beef Roast</b>	Choice Center Cut Chuck	15¢
	U. S. Government Graded Grain-Fed Beef	
<b>Lamb Legs</b>	ALL SIZES! None Higher Than Advertised Price!	25¢
	Genuine 1939 Spring Milk Lamb, U. S. Gov't Graded & Stamped	
<b>Chickens</b>	Fancy, Fresh-Killed, Young Colored Fryers or Roasters	25¢
<b>Skinned Hams</b>	Whole or Half String Half	27¢
	Armour's Star, Cudahy's Puritan, or Rath's Black Hawk	
<b>Sliced Bacon</b>	Cudahy's PURITAN	15¢
	1-lb. Cello	
<b>Sliced Bacon</b>	1-lb. Cello	25¢
	Rath's Cedar Valley	
<b>Shankless Picnics</b>	4 to 7-lb. average	21¢
	Cudahy's Gold Coin or Wilson's Certified	
<b>Spiced Luncheon Meat</b>	1-lb. Sliced	15¢
	Wilson's Certified	
<b>Sausage</b>	100% Pure	19¢
	Our Own Make	
<b>Pork Chops</b>	2-lb. Rib or Pork Loin	21¢
	Blade Rib or Pork Loin	
<b>Cold Cuts</b>	Assorted	25¢
<b>Salads</b>	Potato or Macaroni	15¢
	XLNT—Home-Made Style	
<b>Boiling Beef</b>	Rib	9¢
	Yellowtail or Black Cod—Fresh	15¢
	Fresh—in the piece	
<b>Lamb Chops</b>	1-lb. Tender, meaty shoulder cut	21¢
<b>Ground Beef</b>	1-lb. Shoulder—Fresh	10¢
<b>Loaf Cheese</b>	Sliced Kraft American or Brick	14¢
<b>Cottage Cheese</b>	1-lb. Kraft's Best Grade—(Bulk)	15¢
<b>Fillet of Sole</b>	1-lb. Strictly Fresh	19¢
<b>Green Shrimps</b>	1-lb. Fresh, large	21¢

## Save on Fresh Fruits & Vegetables!

<b>TOKAY GRAPES</b>	4 lbs.	10¢
	JOIN A&P'S CAMPAIGN to help move California's unusually large 1939 crop of Tokay Grapes!	
<b>POTATOES</b>	U. S. NO. 1 Burbanks	10 lbs. 15¢
<b>APPLES</b>	JONATHAN—Combination Fancy and Extra Fancy	6 lbs. 19¢
<b>AVOCADOS</b>	LARGE CALAVOS	2 for 13¢
<b>BROCCOLI</b>	FRESH PICKED	1 lb. 5¢
<b>Dates</b>	New Crop	2 lbs. 25¢
<b>Lettuce</b>	Fresh	3 heads 10¢

## Don't Miss These!

<b>Evap. Milk</b>	WHITEHOUSE	4 tall cans 22¢
<b>Margarine</b>	NUTLEY	1-lb. carton 10¢
<b>Tomato Juice</b>	MARIPOSA	3 No. 2 cans 17¢
<b>Grapefruit Juice</b>	POLK'S	4 No. 2 cans 25¢
<b>Red Salmon</b>	SULTANA	1-lb. can 18¢
<b>Nectar Tea</b>	ORANGE PEKEE	1-lb. can 15¢
<b>Daily Egg Scratch</b>	National Feed Week	25¢ bag 58¢
<b>Snowdrift</b>	1-lb. 35¢ cans	3 14-oz. 25¢
<b>Bak. Powder</b>	Ann Page	1/2-lb. can 9¢
<b>Leslie Salt</b>	2-lb. pkgs.	2-lb. can 12¢
<b>Corn Flakes</b>	Sunnyfield	2-pkgs. 15¢
<b>Peas</b>	Del Monte	No. 2 11¢
<b>Niblets</b>	Del Monte	12-oz. can 10¢
<b>Tomatoes</b>	Solid Pack	No. 2 19¢
<b>Potatoes</b>	Zacate	3 cans 25¢
<b>Chocolate</b>	Gulftard's	1-lb. bar 15¢
<b>Pumpkin</b>	One Pie	14 1/2-oz. 15¢
<b>Ovaltine</b>	50c size	33¢
<b>Silver Polish</b>	Wright's	8-oz. jar 20¢
<b>Potato Chips</b>	No. 25¢	Plus Deposit
<b>Rice</b>	Whitehouse	2-lb. 14¢
<b>Tamales</b>	Gebhardt's	15 1/2-oz. 25¢
<b>Pop Corn</b>	Fluff-i-Pop	10-oz. can 15¢
<b>Biscuit Flour</b>	Globe A	40-oz. pkg. 22¢
<b>Syrup</b>	Vermont Maid	12-oz. bottle 15¢
<b>Dates</b>	Dromedary	1-lb. 11¢
<b>Cake Flour</b>	Soft-A-Bake	5-lb. 45¢
<b>Evap. Milk</b>	WHITEHOUSE	4 tall cans 22¢
<b>Margarine</b>	NUTLEY	1-lb. carton 10¢
<b>Tomato Juice</b>	MARIPOSA	3 No. 2 cans 17¢
<b>Grapefruit Juice</b>	POLK'S	4 No. 2 cans 25¢
<b>Red Salmon</b>	SULTANA	1-lb. can 18¢
<b>Nectar Tea</b>	ORANGE PEKEE	1-lb. can 15¢
<b>Daily Egg Scratch</b>	National Feed Week	25¢ bag 58¢
<b>Snowdrift</b>	1-lb. 35¢ cans	3 14-oz. 25¢
<b>Bak. Powder</b>	Ann Page	1/2-lb. can 9¢
<b>Leslie Salt</b>	2-lb. pkgs.	2-lb. can 12¢
<b>Corn Flakes</b>	Sunnyfield	2-pkgs. 15¢
<b>Peas</b>	Del Monte	No. 2 11¢
<b>Niblets</b>	Del Monte	12-oz. can 10¢
<b>Tomatoes</b>	Solid Pack	No. 2 19¢
<b>Potatoes</b>	Zacate	3 cans 25¢
<b>Chocolate</b>	Gulftard's	1-lb. bar 15¢
<b>Pumpkin</b>	One Pie	14 1/2-oz. 15¢
<b>Ovaltine</b>	50c size	33¢
<b>Silver Polish</b>	Wright's	8-oz. jar 20¢
<b>Potato Chips</b>	No. 25¢	Plus Deposit
<b>Rice</b>	Whitehouse	2-lb. 14¢
<b>Tamales</b>	Gebhardt's	15 1/2-oz. 25¢
<b>Pop Corn</b>	Fluff-i-Pop	10-oz. can 15¢
<b>Biscuit Flour</b>	Globe A	40-oz. pkg. 22¢
<b>Syrup</b>	Vermont Maid	12-oz. bottle 15¢
<b>Dates</b>	Dromedary	1-lb. 11¢
<b>Cake Flour</b>	Soft-A-Bake	5-lb. 45¢
<b>Evap. Milk</b>	WHITEHOUSE	4 tall cans 22¢
<b>Margarine</b>	NUTLEY	1-lb. carton 10¢
<b>Tomato Juice</b>	MARIPOSA	3 No. 2 cans 17¢
<b>Grapefruit Juice</b>	POLK'S	4 No. 2 cans 25¢
<b>Red Salmon</b>	SULTANA	1-lb. can 18¢
<b>Nectar Tea</b>	ORANGE PEKEE	1-lb. can 15¢
<b>Daily Egg Scratch</b>	National Feed Week	25¢ bag 58¢
<b>Snowdrift</b>	1-lb. 35¢ cans	3 14-oz. 25¢
<b>Bak. Powder</b>	Ann Page	1/2-lb. can 9¢
<b>Leslie Salt</b>	2-lb. pkgs.	2-lb. can 12¢
<b>Corn Flakes</b>	Sunnyfield	2-pkgs. 15¢
<b>Peas</b>	Del Monte	No. 2 11¢
<b>Niblets</b>	Del Monte	12-oz. can 10¢
<b>Tomatoes</b>	Solid Pack	No. 2 19¢
<b>Potatoes</b>	Zacate	3 cans 25¢
<b>Chocolate</b>	Gulftard's	1-lb. bar 15¢
<b>Pumpkin</b>	One Pie	14 1/2-oz. 15¢
<b>Ovaltine</b>	50c size	33¢
<b>Silver Polish</b>	Wright's	8-oz. jar 20¢
<b>Potato Chips</b>	No. 25¢	Plus Deposit
<b>Rice</b>	Whitehouse	2-lb. 14¢
<b>Tamales</b>	Gebhardt's	15 1/2-oz. 25¢
<b>Pop Corn</b>	Fluff-i-Pop	10-oz. can 15¢
<b>Biscuit Flour</b>	Globe A	40-oz. pkg. 22¢
<b>Syrup</b>	Vermont Maid	12-oz. bottle 15¢
<b>Dates</b>	Dromedary	1-lb. 11¢
<b>Cake Flour</b>	Soft-A-Bake	5-lb. 45¢

1319 Sartori Ave, Torrance  
Prices effective thru Saturday (taxable items subject to tax)

## SEE THE NATIONAL'S BOOTH AT THE FROLIC

Gaffers & Sattler • ELECTROLUX •  
GAS RANGE • and • BOTH ON DISPLAY

FOR A LIMITED TIME ONLY

**Save money**  
by buying your ...

**GAFFERS & SATTLER**  
Certified Performance

CLOCK CONTROLLED GAS RANGE Now

You not only save \$30 by buying your Gaffers & Sattler Clock Controlled gas range now, but you secure two of the greatest advancements ever made in gas range history... the new super-efficient aluminum nickel alloy round burners and the Signal Click burner control that sounds a click on three set positions... high, medium and low heat.

For a brighter and cleaner kitchen, the new Gaffers & Sattler CP gas ranges are ideal. Roll-overs are eliminated, broiling is smokeless... clean. Burners do not clog and may be removed for easy wiping.

**Model 5921C**  
Large oven, non-tilting rack, pull-out broiler with chromium grid.

This offer good only on lines of Southern California Gas Company, and Southern Counties Gas Company.

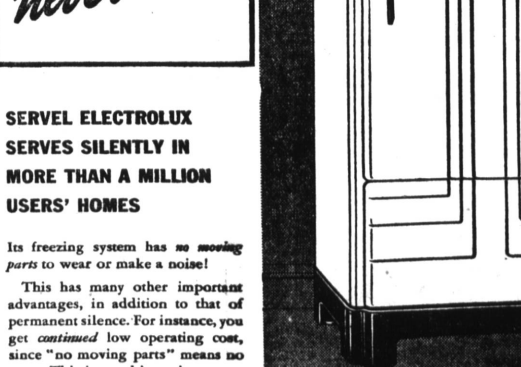
**Model 5921C**  
REGULAR PRICE . . \$139.50  
Less PRICE OF CLOCK \$30.00  
\$109.50  
Less 10% for Old Range . . \$10.95  
**You pay only—\$98.55**

**The finest gas range ever built**

**National Home Appliance Co.**  
HARRY ABRAMSON  
1312 Sartori Avenue  
"FRIENDLY CREDIT"  
Phone 78

## HERE'S THE ONE...

*You hear about but never hear*



**SERVEL ELECTROLUX**  
SERVES SILENTLY IN MORE THAN A MILLION USERS' HOMES

Its freezing system has no moving parts to wear or make a noise!

This has many other important advantages, in addition to that of permanent silence. For instance, you get continued low operating cost, since "no moving parts" means no wear. This is one big saving.

But the biggest saving is on food itself... thru better protection, left-overs saved, the fact you can buy at quantity prices without risk of waste.

Whether you're buying your first automatic refrigerator, or replacing your present one, see the Servel Electrolux gas refrigerator today... and "Save More for More Years."

**The SERVEL ELECTROLUX Gas Refrigerator**

**National Home Appliance Co.**  
HARRY M. ABRAMSON  
1312 Sartori Ave.  
"FRIENDLY CREDIT"  
Phone 78