



Torrance Herald Photo.

CLOTHES FOR NEEDY FOLK . . . Part of the full truck-load of used clothing, shoes and bedding which is now being re-conditioned and segregated by the Torrance Relief Society preparatory to distribution to local needy families. The youngsters, more than 600 of them to the consternation of Ray Brooks, Herald advertising manager, who had only contracted for 500 ice cream bars, were admitted to a gala "end-of-

vacation" show for their gifts. Arranged by manager Lou Reese of the Grand theatre, the screen bill was a source of rowdy enjoyment to the kids because it consisted of cartoon comedies, short subjects and a feature of appealing interest to young people. As the throng poured into the theatre, Herald - man Brooks popped his eyes at their number and began wondering how he could distribute 500 ice bars among more than 600. Thinking he had solved the problem, he announced from the stage that "because of the large crowd, kids over 10 should wait until the younger ones had left the theatre before claiming their free ice cream."

Make Every Article Count A prolonged and emphatic Bronx cheer greeted this remark. Brooks finally "made ends meet" by purchasing additional bars to cover the faces of all the youngsters present. The huge pile of clothing collected in the theatre foyer completely filled Sam Levy's delivery truck when it was loaded for transportation to the home of Mrs. Janet Woodington at 2015 Arlington, where the Relief Society makes its headquarters. "We sincerely thank The Herald and the Grand theatre for collecting such a big amount of clothing for us," Mrs. Woodington said later. "We were just about out of everything and

shown above with some of the young donors. In return for their gifts, the children were treated to a free matinee and given ice cream bars. The party was arranged by The Herald with the assistance of the Grand's manager, Lou Reese.

Help Your Local Relief Society

More used clothing, shoes and bedding is needed by the Torrance Relief Society to prepare for the demand that winter will bring among local needy families.

If you have such articles—and who hasn't?—won't you gather them up and bring them to Mrs. Janet Woodington, president of the Society, at her home, 2015 Arlington avenue?

Those who cannot deliver the donations should phone or write Mrs. Woodington and she will arrange to have them picked up.

The demand for clothing especially children's things is now increasing as the opening of school draws near. We shall make every article count and distribute the things among families whose need is known to us to be very great.

Three Scouts Assist "That theatre party for the youngsters was a splendid thing for The Herald to arrange and the Grand theatre management deserves credit for assisting with the plans. The Torrance Relief Society is deeply appreciative of their cooperative benefit," Mrs. Woodington concluded.

Managers Brooks and Reese were assisted in directing the theatre party by three Boy Scouts—Newton Sleeth, Edwin Smith and Jack Kemp. They did yeoman service in stacking up the bundles and boxes of clothing

OBITUARY

FRED C. OEHLMANN . . . who succumbed Saturday at a Los Angeles hospital was 57 years of age and a resident at 24340 Lucille street, Lomita. Funeral service was held Tuesday afternoon at the A. M. Gainby chapel in Lomita with Rev. John E. Orr officiating. Cremation followed at Pacific Crest cemetery.

Mr. Oehlmann was survived by his widow, Frieda; two daughters, Frieda and Jean of the home address; three sisters, Hannah and Margaret of Alameda and Mrs. Frances McCauley of San Jose; and three brothers, Rudolph of Sebastopol, Calif., Walter of Oakland and Hilmer of Yosemite.

JOHN JUNIOR . . . a resident of Torrance for the past 16 years, succumbed Monday at his home, 833 Sartori avenue. He was 71 years of age, a native of France and a son of Belgian parents. Mr. Junior was caretaker and gardener for the California Petroleum company for many years. He was survived by his wife, Flora and three sons, Henry E. of the home address, John A. of Long Beach and Emil of Compton. The funeral service was held yesterday afternoon at Stone and Myers' chapel with Rev. Frank T. Porter officiating. Interment was at Inglewood cemetery.

LOUISE FITE SMITH . . . daughter of Mrs. Elizabeth Peak of Allene street, Lomita, passed away late last week in New York City. Mrs. Smith was born Dec. 10, 1910, at Pomona and spent most of her childhood in Lomita. She graduated from Narbonne high school in 1928 and six years ago married a commercial artist in New York. Mr. and Mrs. Smith came to California, after living for a time in Florida. In April, 1937, and returned to Manhattan last June. Cremation was held last week-end and the ashes were sent west for interment at Forest Lawn Memorial Park. Mrs. Smith was also survived by a sister, Elizabeth of Eureka, and three brothers, Martin, George and Junior.

ST. ANDREW'S EPISCOPAL . . . 1432 Engracia. Rev. Thomas R. Marshall, vicar. Church school at 9:30 a. m. Morning prayer and sermon at 11 a. m. Parish organizations are resuming their regular programs of meetings and activities. For information telephone 391.

and later loading and unloading Levy's truck. The announcement that a fine Firestone bicycle and other gifts were to be awarded this coming Saturday night at the Grand theatre brought loud cheers from the youngsters last week and they are now busy accumulating tickets that will entitle them to compete for these gifts if they attend the Grand theatre Saturday night.

CHURCH NEWS

METHODIST CHURCH . . . Rev. Harry C. Banks, pastor. El Prado at Carson. Sunday school, 9:45 a. m. Morning service, 11 a. m. Topic: "What Will the Harvest Be?" Union service in the Central Evangelical church, 7:30 p. m. Young people's meeting, 6:30 p. m. In the Guild hall. Tuesday, official board meeting, 7:30 p. m. Wednesday, church night for devotion. Monthly meeting Woman's Council at the church Tuesday.

CATHOLIC CHURCH OF THE NATIVITY . . . Engracia and Manuel avenues. Rev. Fr. Joseph V. Fitzgerald, pastor. Masses Sunday 8 and 10 a. m. week days at 8 a. m. Devotions Sunday and Thursday, 7:45 p. m. Instruction for children Saturday, 9:30 a. m., Sunday 8 a. m. Mass. Adult instructions Tuesday and Friday at 7:30 p. m., at rectory, 1447 Engracia.

CHRISTIAN CHURCH . . . Rev. F. T. Porter, pastor, 1415 Engracia. Sunday school, 9:30 a. m. Morning service, 10:40 a. m. Topic: "The Second Coming." Evening service, 7:30 p. m. Topic: "Nature." Anateur hour. Young people's meeting, 6:30 p. m. Bible study and choir Wednesday night.

LUTHERAN CHURCH . . . Rev. Frank D. Meehling, pastor. Acacia and Sonoma. Sunday school, 9:30 a. m. Morning service, 10:45 a. m. Topic: "Life With a Purpose." The church council and teachers will meet Monday, Sept. 11, at 7:15 and 8 p. m., respectively. Sunday school convention at Santa Ana next Sunday afternoon and evening.

CENTRAL EVANGELICAL . . . Rev. E. W. Matz, pastor. Arlington and Marcella avenues. Sunday school, 9:45 a. m. Morning service, 11 a. m. Topic: "Going to School." Joint evening service, 7:30 p. m. The Methodist congregation will meet with us in a joint service. Young people's meeting, 6:30 p. m. Meeting of the Ladies Guild Wednesday, 2 p. m.

BAPTIST CHURCH . . . Rev. C. Miles Northrup, pastor. Carson and Martina. Sunday school, 9:45 a. m. Morning service, 10:30 a. m. Topic: "God's Great Out of Doors." Evening service, 7:30 p. m. Topic: "The Gospel of Light," a message from the Bible illustrated by science. Young people's meeting, 6:30 p. m. Prayer meeting Wednesday, 7:30 p. m.

MEN'S BIBLE CLASS . . . Meets at 9:30 a. m. Sundays in Boy Scout hall on El Prado. Rev. Ben Lingenfelter, teacher. All men welcome.

FIRST CHURCH OF CHRIST, SCIENTIST . . . 1208 El Prado. Sunday morning services at 11. Sunday school, 9:30 Wednesday evening meeting, 8 p. m. Reading room in church edifice. "Substance" is the subject of the Lesson-Sermon Sunday in all Churches of Christ, Scientist. The Golden Text is from John: "Labour not for the meat which perisheth, but for that meat which endureth unto everlasting life, which the Son of man shall give unto you: for him hath God the Father sealed." A scriptural citation includes these verses about Jesus from Matthew: "And when he had fasted forty days and forty nights, he was afterward a hungered. And when the tempter came to him, he said: If thou be the Son of God, command that these stones be made bread. But he answered and said, It is written, Man shall not live by bread alone, but by every word that proceedeth out of the mouth of God. Again, the devil taketh him up into an exceeding high mountain, and sheweth him all the kingdoms of the world, and the glory of them; and saith unto him, All these things will I give thee, if thou wilt fall down and worship me. Then saith Jesus unto him, Get thee hence, Satan: for it is written, Thou shalt worship the Lord thy God, and him only shalt thou serve. Then the devil leaveth him, and, behold, angels came and ministered unto him." One of the passages from "Science and Health with Key to the Scriptures" by Mary Baker Eddy, states: "The Science Jesus taught and lived must triumph over all material beliefs about life, substance, and intelligence, and the multitudinous errors growing from such beliefs."

WHY suffer from Colds? FOR QUICK RELIEF FROM COLD SYMPTOMS TAKE 666 LIQUID TABLETS—SALVE NOSE DROPS

ASSEMBLY OF GOD . . . Rev. John Makinson, pastor. 1015 Boraer. Sunday school, 9:45 a. m. Morning services, 11 a. m. Evening service, 7:30 p. m. Young people's meeting, 6:30 p. m. Services Tuesday and Thursday nights at 7:30 o'clock.

GRACE TABERNACLE . . . Rev. and Mrs. L. W. Kolb, pastors. Sunday school, 9:30 a. m. Morning worship, 11 a. m. Evening service, 7:30 p. m. Regular services Tuesday and Thursday nights, 7:30 o'clock.

California has 40 dog shows a year.

PACIFIC CREST
Offers 4 BURIAL SERVICES
AT A BIG SAVING TO YOU!
• Cemetery • Mausoleum
• Crematory • Columbarium
182nd and Telephone
Inglewood Redondo
Avenue 2338

A&P Food Stores
LAMB LEGS ALL SIZES None Higher Than Adv. Price 25¢
Genuine 1939 Spring Milk Lamb. U. S. Gov't Graded
BEEF ROAST 15¢
U. S. Government Graded Grain - Fed Steer Beef.
PORK ROAST WHOLE OR SHANK HALF . . . 15¢
Eastern Grain - Fed Shoulder.
VEAL ROAST CHOICE CENTER CUT SHOULDER . . . 15¢
Fancy Northern Milk - Fed.
RoLy Poly Picnics MORRELL'S PRIDE . . . 25¢
Fully Tenderized, Boneless, Cello-Wrapped.
Sliced Bacon . . . 1-lb. Cello package 13¢ 1-lb. carton 25¢
Armour's Star Fixed Flavor.
Chickens Colored Roasters, Fancy Fresh-Dressed! 25¢
(Soft Bone) 4 to 6 pounds Ave. 3¢
Link Sausage ARMOUR'S STAR PURE PORK . . . 10¢
Ground Shoulder Beef STRICTLY FRESH! 10¢
Spiced Luncheon Meat SLICED 19¢
Cold Cuts Best-Ever Brand 25¢
5 Kinds—Assorted
Boiling Beef Plate 9¢
Beef Liver Fresh! 21¢
Fillet of Flounder 17¢
Bacon . . . Sliced! 11¢
Morrell's Pride
Yellowtail in the Piece 14¢
For Boiling
Salmon STEAKS 21¢
Northern Red
Fillet of Sole Northern White 19¢

Save on Fresh Fruits & Vegetables!
PEACHES CURRY FREESTONES 5 lbs. 10¢
POTATOES U. S. NO. 1 BURBANKS 10 lbs. 13¢
GIANT PLUMS 5 lbs. 10¢
Green Peas POLE VARIETY 2 lbs. 15¢
LETTUCE . . . 2 large heads 5¢
APPLES BELLEFLEUR . . . 5 lbs. 10¢
ONIONS YELLOW . . . 6 lbs. 5¢
TOKAY GRAPES 4 lbs. 10¢

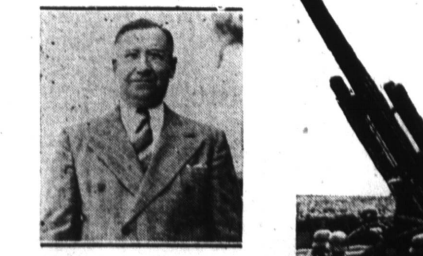
Don't Miss These!
Niblets DEL MAIZ . . . 12-oz. can 10¢
Salad Dressing ANN PAGE . . . quart jar 27¢
Peanut Butter SULTANA . . . 2-lb. jar 23¢
Potato Chips (Plus Deposit) . . . 1-lb. bag 25¢
Eight O'Clock Coffee . . . 3-lb. bag 39¢
Calif. Apricots . . . No. 2 9¢
Baby Foods HEINZ ASSORTED . . . 2-oz. can 15¢
Hormel's Spam . . . 12-oz. can 29¢
Grape Jam ANN PAGE . . . 2-lb. jar 25¢
Cream Corn 2 No. 2 cans 13¢
Salmon Sunnyfield 2 No. 1 cans 35¢
Pineapple Gemal No. 2 1/2 cans 17¢
Jams 4 Jellies 2-oz. glasses 15¢
Corn Beef HASK 14-oz. can 40¢
String Beans 4 No. 2 cans 25¢
Flav-R-Pack 3-lb. pkgt. 25¢
Marshmallows 3-lb. pkgt. 25¢
Grape Nuts . . . 15¢
Tomatoes . . . No. 2 12¢
Peas A&P Brand 2 No. 2 cans 23¢
Evap. Milk White, 1-tall House 42¢
Hominy Burbank 2 No. 2 cans 15¢
Tuna A&P Brand 2 No. 2 cans 25¢
Nectarines . . . 2 No. 2 cans 25¢
Crisco . . . 3-lb. 48¢
Salad Oil Jewel 1/2-gal. jug 58¢
Wheat Flakes 2 pkgs. 15¢
Shred Wheat B. C. 2 pkgs. 17¢
Sliced Beefs Del Monte can 10¢
Bokar Coffee . . . 1-lb. bag 22¢
Vigorous & Winery . . . 1-lb. pkgt. 43¢
Our Own Tea . . . 1-lb. 75¢
Lipton Tea . . . 1-lb. 75¢
Corn Beef Hash No. 1 can 16¢
Salmon Stream can 10¢
Apple Butter Shady Dell 2-lb. jar 43¢
Flour Gold Medal 5-lb. bag 43¢
Soap Chips White 2 1/2-lb. 14¢
Granulated Soap P&H 40-oz. pkgt. 23¢
Shoe Polish Shinola can 8¢
Mazda Bulbs . . . 25 to 100-watt 15¢
Napkins Colored 3 pkgs. 14¢
Scot Tissue . . . roll 7¢
Wax Paper Cut 100-ft. roll 15¢

1319 Sartori Ave, Torrance
Prices effective thru Saturday (taxable items subject to tax)

WAR DECLARED

By Ed Thompson on
USED CAR PRICES

REDUCED!
1938 FORD COUPE
\$445
REDUCED!
1938 CHEVROLET SPORT SEDAN
\$685



We are FORCED to reduce our stock to make way for new 1940 Chevrolets soon on the market. Every car on our lot has been slashed to rock bottom. WE MUST SELL THEM!! Come in! Look around! We have the car to suit you!

Place your order now for a NEW 1940 CHEVROLET. Already 21 local buyers have signed up with us. You don't have to see the new model before you buy. Believe me, it's a beauty. Chevrolet has already given you the best. In 1938 it outsold every other make of car in 47 out of the 48 states. THAT PROVES IT!

Ed Thompson
"The Man Who Treats You Right!"
1600 Cabrillo Ph. 592

EVERY NEW & USED CAR SOLD PERSONALLY OK'D BY ED THOMPSON!
EASY GMAC TERMS

1600 Cabrillo Ph. 592

WAR NEWS

is the big news of the day! Is your radio equipped to receive the important bulletins clearly and without interruption? To be sure . . . trade in your old set TODAY on a new all-wave . . .

RCA VICTOR RADIO
OUR NEW 1940
RCA Victor CONSOLES
Are The Greatest Values in Years
Designed for Use with RCA Victor TELEVISION ATTACHMENT
There's no need for you to deny yourself the finest in radio any longer. These radios will play a vital role in television when it reaches this vicinity. Used with RCA Victor Television Attachment, these sets will reproduce television sound while attachment gives you television pictures.
Model K-60 \$59.95
Only
6-Tube Sensation . . . Improved Push-Button Tuning for 8 stations!
Model K-80 \$79.50
Only
Great 8-Tube Value . . . Improved Push-Button Tuning for 8 stations . . . Magic Eye.
All These Features and More
New 3-band Clear View Illuminated Dial . . . American and Foreign reception . . . RCA Victor Tubes . . . Television Attachment or Victrola Switch . . . Plug-What you want to hear, when you want to hear it—that's the American Radio For finer radio performance—RCA Victor Radio Tubes
In for Victrola or Television Attachment . . . 12" Electro-Dynamic Speaker . . . Band Indicator . . . Metal Tubes.
Easy Terms—Low Down Payments

National Home Appliance Co.
HARRY M. ABRAMSON "FRIENDLY CREDIT"
1312 Sartori Ave. Phone 78