

**AWAY AT COLLEGE**  
Keep them informed: Your boy or girl at school would like to read The Herald—six months, \$1.

## "OKLAHOMA KID" Starts May 14

### Gardena Theatre

• EARPHONES •  
Children 10c • Adults 25c  
1002 GARDENA BLVD.  
2 Blocks West of Vermont  
Phone Menlo 4-2252

Thurs., Fri., Sat. May 4-5-6  
"STAGE COACH"  
with Claire Trevor, John Wayne  
Plus "CAFE SOCIETY"  
Flash Gordon Serial  
Fri. 8:30 p. m. Sat. 2 & 5 p. m.

Sun., Mon., Tues. May 7, 8, 9  
"You Can't Cheat An Honest Man"  
Charlie McCarthy, W. C. Fields; also  
"WIFE HUSBAND, FRIEND"

Wed. Only May 10  
"LUCKY LETOR NITE"  
The Streamlined Country Store  
Also 2 Features Requested  
"THE GREAT WALTZ"  
and  
"FISHERMAN'S WHARF"

## Legion Posts Hold Joint Meet Here

At the joint meeting of the Torrance and Redondo Beach American Legion posts last night in the local clubhouse, the post here voted to send a Sons of Legion member to "Boys' State" in Sacramento next July. It is understood that six Sons of Legion are eligible for this honor and the selection will be made of the boy who has the highest school rating.

### INTEND TO WED

Conrad J. Jacobsen, 24, of Fort McArthur, and Dorothy M. Wallace, 17, of 22617 Figueroa street, Torrance.

## REDONDO SMOKING-LOGES & BALCONY

STARTING FRIDAY!  
Fred Astaire and Ginger Rogers in

"The Story of Vernon and Irene Castle"

also  
Jennette MacDonald, Lew Ayres, Frank Morgan in  
"Broadway Serenade"

## Townsend Club Activities

By Vernon F. Glidden  
Pinch-hitting for Mrs. Beth Paige, who is ill.

Our scribe, Mrs. Beth Paige, is still confined at home. We miss her cheery smile and hope she will soon be able to be with us again.

A pleasant evening was enjoyed by a good crowd last Thursday evening. After a short business session there were cards and games and delicious refreshments.

Don't overlook the "Jitney Dinner" at the corner of Torrance boulevard and Fortola to night at 6 p. m. A fine program at 8 p. m. by the Yeoman Entertainers of Los Angeles.

Rose Bowl Chooses Theme  
PASADENA (U.P.)—"Twentieth Century in Flowers" is the theme that has been selected for the 1940 annual Tournament of Roses parade.

We carry the famous  
BERNAT YARNS  
and have a competent knitting instructor.  
The EL PRADO YARN SHOP  
1335 El Prado



**TROPIC TRIPPER**... Eleanor Powell's latest starring vehicle, the tuneful, danceful "Honolulu" opens tonight at the Lomita theatre. She introduces a number of new songs and dances and Robert Young is co-starred in a dual role that provides many laughs. Burns and Allen are also featured. The companion feature on the Lomita bill is "The Great Man Votes," starring John Barrymore.

Starting Sunday will be an everyday story of love featuring Carole Lombard and James Stewart. This is "Made for Each Other." On the same program will be "The Girl Downstairs" with Franchot Tone and Francisca Gaal and the March of Time.

U. S. Highway 61 Links Great Lakes and Gulf.

VICKSBURG, Miss. (U.P.)—The Great Lakes region has been linked with the Gulf of Mexico through the completion of U. S. Highway 61, a \$14,000,000 stretch of paved road.

## Fox GRANADA

632 Avalon Blvd., Wilmington

5 Days—Starts Friday...  
A Smash Double Feature Bill  
"DODGE CITY"

In Gorgeous Technicolor  
with Errol Flynn, Olivia De Havilland

and "SERGEANT MADDEN"  
with Wallace Beery

## PLAZA THEATRE

HAWTHORNE, CALIF.  
Telephone 296  
"The Friendly Family Theatre"

Hearing Aids Available

Thursday, Friday and Saturday Matinee  
Robert Montgomery, Rosalind Russell.

"FAST and LOOSE"  
and  
Jane Withers

"ARIZONA WILDCAT"  
Magle Screen Friday

Saturday Night  
"LOVE AFFAIR"  
"FAST & LOOSE"

Sunday, Monday, Tuesday  
Irene Dunne, Charles Boyer

"LOVE AFFAIR"  
also  
Joan Crawford, James Stewart

"Ice Follies Of 1939"  
"Silly Symphony"

Wednesday Only  
Special Attraction  
Cooper and Bartholomew

"SPIRIT OF CULVER"  
"The Adventures of Jane Arden"

8 Come Early 8 Open 6 5

## No More Stepped On Toes at Plaza

With the installation of the new Kroehler push back seats in the loge section, the Plaza theatre in Hawthorne now presents the maximum in comfort and entertainment, according to Mr. Calvi, manager of the theatre.

The new chairs allow the patron to remain seated while persons are entering or leaving the row. By simply remaining seated and pushing back on the seat, an extra six-inch clearance is created in the row allowing free and easy passage.

The push back chairs are also equipped with a spring which automatically retracts the seat out of the row as soon as the patron rises to leave the theatre. Plaza patrons can now enjoy the show without the old scramble resulting in stepped on toes, bumped knees and jaded dispositions.

## Nine Patients Enter Hospital

Nine patients were received at Torrance Memorial hospital during the past week. Bennie Alvey, 17, of 2138 23rd street, Lomita, returned home yesterday following an appendectomy performed last Friday. Earl Gregory of Compton was received Tuesday for surgery. Mrs. Rose Rohr of Redondo Beach entered Tuesday for an appendectomy.

Fred Ralston, son of Mrs. Gertrude Ralston of 1667 Gramercy entered Monday for minor surgery. Mrs. Elsie Remington, Redondo Beach, was received Friday for surgery and Mrs. Theresa Sullivan, Hermosa Beach, applied Tuesday for medical care.

Marion Winn, 15, of 25301 Freijo, Lomita, underwent an appendectomy this week. W. H. York, 1720 Cabrillo, is recovering from a hernia operation performed last Thursday. Don A. Kelley, 1322 Engracia, had a tonsillectomy yesterday.

## Mrs. O'Toole Heads D. A. V. Auxiliary

Mrs. Margaret O'Toole, 1225 Madrid avenue, was elected commander of Disabled American Veterans Auxiliary, at a meeting held in Wilmington last night. Senior vice-commander is Viola Monroe of Lomita, and other officers chosen included Stella Lockette, San Pedro, Katherine Nelson, gold star mother, and Gladys Liden, of Wilmington.

Two members were taken into the order, Lorraine Kelley of Torrance and Mary Johnson of San Pedro. Future activities include a joint meeting of the Auxiliary and Chapter of the Seventh district, May 8, at Long Beach when new officers will be elected, regular Auxiliary meeting May 17, and a dance at Wilmington May 22.

## Big Turkey Crop Is Anticipated

Judging from the survey made recently by Mr. Federer of the Fedco Company, the amount of turkey poult put in this coming year will nearly double that of last year. "We have approximately three times as many young turkeys on Fedco alone, and the general indications are that turkeys will be put in up until June," he said.

Federer believes holiday prices this year will be above last year.

The Herald—3 months, 50 cents.



**PAIRED FOR ROMANCE**... Two of the screen's top-flight stars are paired for the glamorous leading roles in "Love Affair," which starts Saturday at the Plaza theatre in Hawthorne. Lovely Irene Dunne is the pensive princess and Charles Boyer the Parisian playboy who face surrender of their butterfly careers in the romance.

## IT'S TRUE!



THAT "PYGMALION" George Bernard Shaw's first play to become a screen production, opens Sunday at the Torrance theatre. The film version of this brilliant comedy has won wide acclaim wherever shown and the local presentation is expected to draw a record number of theatre-goers.



**FEUD OF A CENTURY**... Continues on the screen between bulbous-nosed W. C. Fields and Charlie "I'll mow 'em down!" McCarthy in "You Can't Cheat An Honest Man" which opens Sunday at the Gardena theatre.

### SCHOOL VOTE DUE

Members of the Junior high school student body are to nominate candidates tomorrow who will stand for election to student offices May 19.

## McCall Wins Case in La. High Court

City Attorney John E. McCall received a telegram Monday night informing him that the Louisiana supreme court had returned a unanimous decision in favor of his client, a Long Beach physician, who was seeking collection of a judgment amounting to more than \$20,000 from W. H. Hells, oil operator.

## NARBONNE PTA SPONSORING PLAYS FRIDAY

Narbonne P.T.A. is sponsoring a benefit entertainment tomorrow (Friday) evening for the needy children in the community. The entertainment is scheduled to start at 8:15 with a two-hour program, consisting of three one-act plays by Miss May's Dramatics class and incidental music by the orchestra, conducted by Miss Neft.

"The Marriage Proposal" is a hilarious comedy enacted by Hugh Lammann, Rae Czerwinski and Bob Biller.

The second play "Wurzel Flummery" is an English comedy and the cast is composed of Alfred Trefethen, Eva Nell Cothern, Arlene Falk, Bob Owens and Francis Murphy.

The third play, "A Message from Khufu" is a mystery play built around three deserters from the Foreign Legion in Egypt. The cast of characters are: Archie Ahrends, Jethro Huffman, Bob Steinbach and Jimmie Kerber.

Costumes and sets were designed by the pupils in the drama classes under direction of Mrs. Alice Heilman, Art instructor. Price of admission for this most worthy entertainment is only 10 cents for students, adults and friends.

## Western Auto Offers Savings in Appliances

Announcing new low prices on many new 1939 Western Air Patrol radios for the home, E. B. Murchison local manager of the Western Auto Supply company urges prospective radio purchasers to visit the home appliance department of his store and see the extra savings the recently reduced prices afford.

Further news of interest, particularly to housewives, is the announcement of the recently introduced 1939 Superior Washing Machine which have just been received and are now on display in the local Western Auto store. Features ordinarily found in more expensive washers have been incorporated in the new Superior Washers at Western Auto's surprisingly low prices.

## Model Play-House Is Party Scene

Geraldine Joan Arco celebrated her seventh birthday Wednesday with an "open house" in her play-house—consisting of three rooms—living, bed and kitchen—all completely furnished throughout. Games furnished the entertainment for: Ann Marie Bishop, Jimmie Hawthorn, Janet Pearl Robenstine, Erlene Simonson, Donna Galli, Jeanne Hammack, Helen Faye Stitt, Patty Jo Moore, Jerry Harder, Helen Clark, Betty Peterson, Janis Adrienne and Marilyn Ann Haarer, Carolei and Forrey Staggs of Redondo Beach, and Joan and Carol Arnold of Inglewood. The little hostess is the daughter of Mr. and Mrs. Gaston Arco of 1621 Greenwood avenue.

## Fruit Trees Planted Along German Roads

WASHINGTON (U.P.)—Highways in Germany have been beautified by planting fruit trees along the roadside, the U. S. Bureau of Public Roads reported. Cherry, apple, pear and walnut trees have been placed 32 feet apart along each side of roads. The fruit is sold at auction on the trees and harvested at the purchaser's expense.

## LOMITA THEATRE

10c 24333-Narbonne 20c  
Thurs., Fri., Sat. May 4, 5, 6  
Eleanor Powell, Robert Young  
in M-G-M's Musical Gem  
"HONOLULU"

also  
"The Great Man Votes"  
with John Barrymore  
Cartoon News

Sun., Mon., Tues. May 7, 8, 9  
Carole Lombard, James Stewart in  
"Made For Each Other"

also Francisca Gaal, Franchot Tone in  
"THE GIRL DOWNSTAIRS"

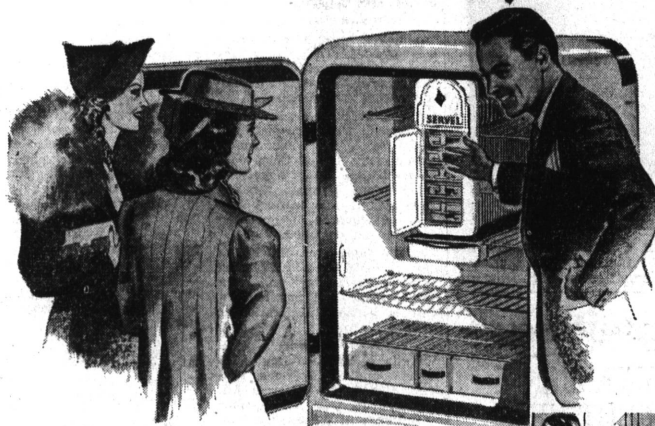
March of Time  
"Background of War"

Wed., Thurs., Fri., Sat.  
May 10, 11, 12, 13  
Shirley Temple in  
"The Little Princess"

and  
"DUKE OF WEST POINT"  
with Louis Hayward

News Mickey Mouse Cartoon

# YOU'LL LIKE ITS SILENCE and its Economy!



Buy a Servel Electrolux now  
...save for years!

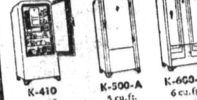
WHEN you own a gas refrigerator you'll wonder how you ever got along without it! Enjoyment and savings start the day your Servel Electrolux is installed. And your gas refrigerator will keep on serving you silently and economically year after year. It has no moving parts in its freezing system to make noise or wear out.

You save money, too, through lower fuel costs—thanks to natural gas—and because the superb food protection reduces waste. So combine enjoyment with economy. Let a gas refrigerator bring you both—and the sooner the better!

See Servel Electrolux, the gas refrigerator, at a dealer's or your gas company—today!

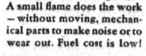
SOUTHERN CALIFORNIA GAS COMPANY

## Special Low Prices ON THESE MODELS



K-410 42 cu. ft.  
K-500-A 50 cu. ft.  
K-600-A 60 cu. ft.

• Silent and wear-proof! A small flame does the work—without moving mechanical parts to make noise or wear out. Fuel cost is low!



• Save money, too, by profiting from quantity discounts at the market! With its uniform, constant, dependable cold, Servel Electrolux keeps foods fresh.



• And such conveniences! Adjustable shelves... illuminated temperature dial... easy-to-wipe, porcelain enamel finish... all the other things you especially want!



## Natural Gas

FOR THE 4 BIG JOBS... WATER HEATING • COOKING • REFRIGERATION • HOUSE HEATING

1939. PURSE LOST—B. de papers, cont., keys, cross, papers, Rec. (1) Apoc. DOV. levard 4470.

atta E. unt. NS. ead. J. very

ue ave- ty be- ann. rge E. ur a-law.

MORTU- copes- Im- al and

**The HERALD CAN FIND IT FOR YOU**

Every week local residents find lost husbands, wives, children, dogs, purses, and keys thru Herald Classified Ads!

**36c WILL FIND IT! CALL TORRANCE 444**

FOUNDER—Lost; brown, white; male; from 1234 E. 1st; reward \$25.00