

**SUPERIOR WORK Always!**

Service. Deluxe, many people call it, but it's standard here at the Royale! Every speck of dirt and grease is removed—colours and patterns are restored, and there's no objectionable dry cleaning odor! Send us your soiled garments; we'll return them, perfectly cleaned—perfectly pressed!

**PIPER'S CLEANERS & DYERS**  
**ROYALE**

1344 POST AVE (Across from Library) PHONE 370

READ OUR WANT ADS . . . AND SAVE MONEY!

**Suits • Coats  
Dresses  
(Plain)  
50¢**

**Howes to Attend Organists' Gathering**

Mr. and Mrs. James F. Howe will attend the May meeting and dinner of the American Guild of Organists at Mission Inn, Riverside, Monday evening. The Organists join with the Riverside Music Arts association in a spring festival of organ and choir music.

Howe was recently elected to membership in the Los Angeles chapter of the American Guild of Organists.

**Soviet Ranks Foremost in Horse Ownership**

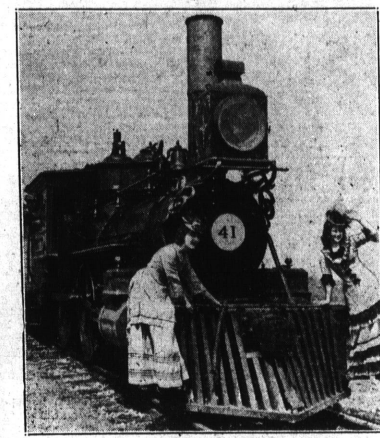
The greatest horse owner in the world is Soviet Russia, with 16,200,000 animals, according to the "Horse Owners' Reference Book" just published in London. Britain comes 17th, with only 1,001,000 horses. In the United States there are 11,000,000 horses on the farms alone, while the Argentine has 8,557,000, Brazil 8,000,000, China 4,000,000, Germany 3,429,000 and France 2,700,000.

**NEW ARRIVAL**  
Sergeant and Mrs. W. A. Covington of Riverside welcomed the arrival of a five and three-quarter

**Widow Files for Husband's Estate**

Mrs. Rosa Dietrich, 25831 Cypress avenue, Lomita, petitioned the superior court this week for letters of administration to the estate of her late husband, Henry Dietrich, who died last March 28.

Real and personal property comprises the bulk of the estate, according to the petition which is to be heard May 17.

**ENGINE IN STATION JUBILEE FETE**

It's easy if you know how. Left to right, June Drayton and Jean Allen rehearse on grove of old wood burner for parade on Alameda street, which starts Los Angeles Union Station Celebration, May 3, 4 and 5. Engineer E. E. Royal in the cab. A spectacular railroad show, "California's Story of Transportation" also will be given free to the public all three days in the new depot building.

Thrills of old time railroading street to the station. This will be experienced May 3, 4 and 5, when Los Angeles holds its Union Station Celebration to commemorate opening of the new \$11,000,000 structure. Civic committees, who made the statement, said all shows in connection with the event will be open and free to the public. It is the desire to attract thousands of citizens to the depot, that they may study its beauties and innovations for themselves. A great parade will run on Alameda street at 11 a. m., on the opening day from Seventh

**Chamber to Elect Directors June 5**

Six candidates for the three places open on the Chamber of Commerce board of directors have been elected by a nominating committee, headed by President Alden W. Smith, to stand election of the entire membership June 5.

The candidates are: Sam Levy, incumbent; Grant Barkhill, Harvel Gattenfelder, William Rojo, Jr., Jean Sears and A. H. Silligo.

**Girls Holding Playday Here**

Girls from Banning, Dorsey, Gardena and Narbonne high schools are thronging the playing fields at Torrance high school today for a gala playday series of competitive sports. The local girl students are serving as hostesses for the event.

The playday began with a brief program in the high school assembly hall and following the games refreshments will be served in the girls' gym.

Schoolhouse of Past Lives  
ARVIN (U.P.)—The Little Red School House is still a reality here. Mrs. Babson Harford teaches everything to 37 pupils from first to eighth grade. It is painted red.

**CUT**  
Your kitchen WORK  
With these TWO Sharp bargains

10 1/2 IN. CARVER  
and  
7 1/2 IN. PARING KNIFE

FOR A limited time only Irradiated Sego Milk makes this generous offer . . . two handsome knives made of Geneva Forge stainless steel with hardwood handles shaped to fit your hand.

**BOTH KNIVES FOR ONLY 35¢**  
LARGE COUPONS (or 70 small) and 10¢

**SEGO MILK CO.**  
24 CALIFORNIA ST., SAN FRANCISCO  
Your knives will be sent postage paid. Sego Milk Premium Store 1248 South Main Street Los Angeles, Calif.

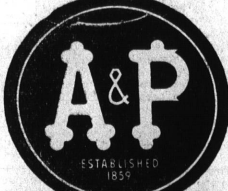
**SEGO MILK CO.**  
COUPONS AND 10¢ TO 10¢

**SEGO MILK CO.**  
COUPONS AND 10¢ TO 10¢

**A&P Guarantees the QUALITY of Every Pound of Meat It Sells!**

There's a great deal of satisfaction in knowing that every cut of meat you buy at A&P is unconditionally guaranteed. And here's what we do to insure your getting good meat. First we buy only meat that is U. S. Government graded and stamped. Then our own expert buyers select carefully for flavor and tenderness those cuts that go to A&P markets. We employ only skilled master butchers—who know how to

cut and trim meat to suit your taste. All our meats are kept in temperature-controlled refrigerators and display cases right up to the minute you purchase it. Having done all of these things we know that you can buy with confidence—any cut of meat you desire at A&P—and then, too, we guarantee every cut. As usual the prices are exceptionally low—so you don't have to pay a premium for quality at A&P. Visit us today!



"A&P Quality" Genuine Young Lamb!  
U. S. Gov't. Graded and Stamped for Your Protection!

**LAMB LEGS** 24 1/2 lb  
WASTE-FREE! WELL-TRIMMED!  
**SHOULDER** 17 1/2 lb  
**LAMB CHOPS** 23 1/2 lb  
Rib or large loin

"A&P QUALITY" GRAIN-FED STEER BEEF  
**BEEF ROAST** 15 1/2 lb  
CHOICE CHUCK CUTS  
U. S. Government Graded and Stamped!

"A&P QUALITY" GRAIN-FED STEER BEEF  
**PRIME ROAST RIB** 27 1/2 lb  
Well-Trimmed! Waste-Free!  
Only the first 5 tender ribs sold for prime rib roast at A&P!

"A&P QUALITY" GRAIN-FED STEER BEEF  
**STEAKS** 24 1/2 lb  
ROUND OR SWISS  
T-BONE STEAKS . . . 35¢  
PORTER HOUSE . . . 39¢  
RUMP ROAST . . . 27¢

Chosen Cuts, Cut  
**T-BONE ROAST** . . . 19¢  
Lean Rib  
**BOILING BEEF** . . . 7¢

Cudahy's "Gold Coin" or  
Morrell's "Pride"  
**PORK LOIN ROAST** . . . 17 1/2 lb  
White or full loin from either

Strictly Fresh (not frozen) Young Pig  
**PORK SPARE RIBS** . . . 15¢  
Local Meaty!

Fancy Fresh-Dressed Young  
**Frying CHICKENS** . . . 27¢  
ROASTING CHICKENS  
COLORED HENS . . . 33¢  
Frying Rabbits . . . 33¢

Cudahy's "Puritan"  
**BOILED HAM** . . . 23¢  
Cudahy's "Puritan" Pure Pork  
**LINK SAUSAGE** . . . 10¢  
1/2 lb. cello pkg.

**STRICTLY FRESH FISH!** by the place  
**HALIBUT** . . . 15¢  
**RED SALMON** . . . 15¢  
**ROCK or LING COD** . . . 21¢  
Fancy Green Shrimps . . . 21¢

**CHEESE SALE!**  
GOLD 'N RICH  
LIMBURGER (Bodger) . . . 39¢  
19¢ lb  
JACK CHEESE . . . 24¢  
SHARP CHEESE (8 mos. old) . . . 24¢  
ROQUEFORT Gouda "Society Bee" . . . 49¢ lb

**"FIRST AIDS" to HOUSE CLEANING**  
SPECIAL!  
BROOMS Broomly . . . 29¢  
SHELF PAPER . . . 9¢  
HOLLY SAL SODA . . . 9¢  
DISH CLOTHS . . . 2¢  
SILVER POLISH . . . 20¢  
CLOTHES LINES . . . 15¢  
CLOTHES PINS . . . 15¢  
AMMONIA . . . 18¢  
MOP HEADS . . . 19¢  
CANVAS GLOVES . . . 9¢  
JOHNSON'S Glo-Coat . . . 59¢  
A&P BLEUING . . . 10¢  
WINDOW CLEANER . . . 10¢  
BON AMI DE LUXE . . . 19¢  
CLEANER . . . 3¢  
LIGHTHOUSE . . . 3¢  
S. O. S. . . . 20¢

**FRESH EGGS** 25¢  
Large Extras in Carton  
YOU'LL LIKE SILVERBROOK FIRST QUALITY BUTTER 29¢  
92-94 Score (quarters)

**COFFEE** 18¢  
RED CIRCLE  
PILSENER-TYPE BROWNIE BEER 5¢  
11-oz. plus deposit

**IRIS Famous Foods**  
1935 Fancy Irish NEW POTATOES . . . 9¢  
1935 Fancy Winkles SWEET PEAS . . . 2¢  
1935 Fancy PINEAPPLE JUICE . . . 2¢

**ANN PAGE GRAPE JAM**  
Seedless RAISINS . . . 2 1/2 lb. 11¢  
"Perfect Slice" SALMON ALMON . . . 3 1/2 lb. 28¢  
Seedless SALMON ALMON . . . 1 1/2 lb. 18¢  
Assorted Campbell's SOUPS . . . 25¢  
IONA CUP WHITE . . . 2 1/2 lb. 13¢

**DOUBLE YOUR MONEY BACK**  
If you don't agree this grand salad dressing places your taste and saves you money!  
ANN PAGE SALAD DRESSING . . . 32¢  
We know you'll like Ann Page Salad Dressing, because it is made with more of the fine ingredients that give quality and flavor to a salad dressing! Buy a jar today at your A&P store!

**ANN PAGE GRAPE JAM**  
Seedless RAISINS . . . 2 1/2 lb. 11¢  
"Perfect Slice" SALMON ALMON . . . 3 1/2 lb. 28¢  
Seedless SALMON ALMON . . . 1 1/2 lb. 18¢  
Assorted Campbell's SOUPS . . . 25¢  
IONA CUP WHITE . . . 2 1/2 lb. 13¢

**ANN PAGE GRAPE JAM**  
Seedless RAISINS . . . 2 1/2 lb. 11¢  
"Perfect Slice" SALMON ALMON . . . 3 1/2 lb. 28¢  
Seedless SALMON ALMON . . . 1 1/2 lb. 18¢  
Assorted Campbell's SOUPS . . . 25¢  
IONA CUP WHITE . . . 2 1/2 lb. 13¢

Have you seen our new display of seasonable . . .

**FRUITS AND VEGETABLES**  
at Special Low Prices!

**Tomatoes** LUSCIOUS—RED Imperial Valley! 2 lbs. 15¢

**BEANS** GREEN STRINGLESS 2 lbs. 29¢

**Strawberries** GOOD SIZE 2 baskets 19¢

**BANANAS** GOLDEN-RIPE 5¢

**New Potatoes** 4 lbs. 10¢

**CELERY** UTAH TYPE LARGE STALK 5¢

**WINESAP APPLES** CRISP, JUICY! THE KIND YOU LIKE TO EAT! 5¢ lb.

**ANN PAGE GRAPE JAM**  
Seedless RAISINS . . . 2 1/2 lb. 11¢  
"Perfect Slice" SALMON ALMON . . . 3 1/2 lb. 28¢  
Seedless SALMON ALMON . . . 1 1/2 lb. 18¢  
Assorted Campbell's SOUPS . . . 25¢  
IONA CUP WHITE . . . 2 1/2 lb. 13¢

**ANN PAGE GRAPE JAM**  
Seedless RAISINS . . . 2 1/2 lb. 11¢  
"Perfect Slice" SALMON ALMON . . . 3 1/2 lb. 28¢  
Seedless SALMON ALMON . . . 1 1/2 lb. 18¢  
Assorted Campbell's SOUPS . . . 25¢  
IONA CUP WHITE . . . 2 1/2 lb. 13¢

**ANN PAGE GRAPE JAM**  
Seedless RAISINS . . . 2 1/2 lb. 11¢  
"Perfect Slice" SALMON ALMON . . . 3 1/2 lb. 28¢  
Seedless SALMON ALMON . . . 1 1/2 lb. 18¢  
Assorted Campbell's SOUPS . . . 25¢  
IONA CUP WHITE . . . 2 1/2 lb. 13¢

**ANN PAGE GRAPE JAM**  
Seedless RAISINS . . . 2 1/2 lb. 11¢  
"Perfect Slice" SALMON ALMON . . . 3 1/2 lb. 28¢  
Seedless SALMON ALMON . . . 1 1/2 lb. 18¢  
Assorted Campbell's SOUPS . . . 25¢  
IONA CUP WHITE . . . 2 1/2 lb. 13¢

**ANN PAGE GRAPE JAM**  
Seedless RAISINS . . . 2 1/2 lb. 11¢  
"Perfect Slice" SALMON ALMON . . . 3 1/2 lb. 28¢  
Seedless SALMON ALMON . . . 1 1/2 lb. 18¢  
Assorted Campbell's SOUPS . . . 25¢  
IONA CUP WHITE . . . 2 1/2 lb. 13¢

**ANN PAGE GRAPE JAM**  
Seedless RAISINS . . . 2 1/2 lb. 11¢  
"Perfect Slice" SALMON ALMON . . . 3 1/2 lb. 28¢  
Seedless SALMON ALMON . . . 1 1/2 lb. 18¢  
Assorted Campbell's SOUPS . . . 25¢  
IONA CUP WHITE . . . 2 1/2 lb. 13¢

**ANN PAGE GRAPE JAM**  
Seedless RAISINS . . . 2 1/2 lb. 11¢  
"Perfect Slice" SALMON ALMON . . . 3 1/2 lb. 28¢  
Seedless SALMON ALMON . . . 1 1/2 lb. 18¢  
Assorted Campbell's SOUPS . . . 25¢  
IONA CUP WHITE . . . 2 1/2 lb. 13¢

**ANN PAGE GRAPE JAM**  
Seedless RAISINS . . . 2 1/2 lb. 11¢  
"Perfect Slice" SALMON ALMON . . . 3 1/2 lb. 28¢  
Seedless SALMON ALMON . . . 1 1/2 lb. 18¢  
Assorted Campbell's SOUPS . . . 25¢  
IONA CUP WHITE . . . 2 1/2 lb. 13¢

**ANN PAGE GRAPE JAM**  
Seedless RAISINS . . . 2 1/2 lb. 11¢  
"Perfect Slice" SALMON ALMON . . . 3 1/2 lb. 28¢  
Seedless SALMON ALMON . . . 1 1/2 lb. 18¢  
Assorted Campbell's SOUPS . . . 25¢  
IONA CUP WHITE . . . 2 1/2 lb. 13¢

**ANN PAGE GRAPE JAM**  
Seedless RAISINS . . . 2 1/2 lb. 11¢  
"Perfect Slice" SALMON ALMON . . . 3 1/2 lb. 28¢  
Seedless SALMON ALMON . . . 1 1/2 lb. 18¢  
Assorted Campbell's SOUPS . . . 25¢  
IONA CUP WHITE . . . 2 1/2 lb. 13¢

**ANN PAGE GRAPE JAM**  
Seedless RAISINS . . . 2 1/2 lb. 11¢  
"Perfect Slice" SALMON ALMON . . . 3 1/2 lb. 28¢  
Seedless SALMON ALMON . . . 1 1/2 lb. 18¢  
Assorted Campbell's SOUPS . . . 25¢  
IONA CUP WHITE . . . 2 1/2 lb. 13¢

**ANN PAGE GRAPE JAM**  
Seedless RAISINS . . . 2 1/2 lb. 11¢  
"Perfect Slice" SALMON ALMON . . . 3 1/2 lb. 28¢  
Seedless SALMON ALMON . . . 1 1/2 lb. 18¢  
Assorted Campbell's SOUPS . . . 25¢  
IONA CUP WHITE . . . 2 1/2 lb. 13¢

**ANN PAGE GRAPE JAM**  
Seedless RAISINS . . . 2 1/2 lb. 11¢  
"Perfect Slice" SALMON ALMON . . . 3 1/2 lb. 28¢  
Seedless SALMON ALMON . . . 1 1/2 lb. 18¢  
Assorted Campbell's SOUPS . . . 25¢  
IONA CUP WHITE . . . 2 1/2 lb. 13¢

**FOOD STORES**

**1319 Sartori Ave. Torrance**

**1319 Sartori Ave. Torrance**

**1319 Sartori Ave. Torrance**

**1319 Sartori Ave. Torrance**

**1319 Sartori Ave. Torrance**

**1319 Sartori Ave. Torrance**

**1319 Sartori Ave. Torrance**

**1319 Sartori Ave. Torrance**

**1319 Sartori Ave. Torrance**

**1319 Sartori Ave. Torrance**

**1319 Sartori Ave. Torrance**

**1319 Sartori Ave. Torrance**

**1319 Sartori Ave. Torrance**

**1319 Sartori Ave. Torrance**

**1319 Sartori Ave. Torrance**

**1319 Sartori Ave. Torrance**

**1319 Sartori Ave. Torrance**

**1319 Sartori Ave. Torrance**

**1319 Sartori Ave. Torrance**

**1319 Sartori Ave. Torrance**

**1319 Sartori Ave. Torrance**

**1319 Sartori Ave. Torrance**

**4 STEEL FACTS in one minute**

The Family of Stainless Steels  
Stainless steel is more than a single type of alloy steel. The stainless family includes nearly 20 steels and alloys, each having a different chemical composition.

**Iron Treasured Like Silks and Furs**  
Iron was so highly prized by the ancient Chinese that it was sold in the market places along with soft silks and fine furs.

**Steel Employees Are Everywhere**  
Steel is the favorite metal for the construction, building, and fitting of many things.

**Many Steelmaking Materials Come from Abroad**  
The United States depends wholly or in large part on foreign sources for the chromium, cobalt, manganese, nickel, tin, tungsten and vanadium essential to making steel products.

**Church Birthday Fete Planned**  
Preparations are being made now for celebrating the eighth anniversary of the South Lomita church on May 8. Irene Mills is heading the committee, according to Rev. Urban W. Hall, pastor. Special programs and guest speakers will highlight the event.

**Insurance Paid City for Yard Fire**  
City Clerk A. H. Bartlett told the city council Tuesday night he had received a check for \$300, in full settlement of the city's insurance claim for losses sustained in the April 15 fire at the city yard.

**Gasoline Thieves who were siphoning a truck tank there are believed to have caused the blaze. Police are still continuing a search for them.**

**Divorce Court Bars Children CLEVELAND, O. (U.P.)—** Judge Frank J. Merrick believes that divorce courts are not the places for school children to acquire the proper outlook on life. He has barred them from his court—although previously it had been the custom to show classes through.

**Grandiose Tiddy-Winks REVERIE, Mass. (U.P.)—** Tiddy-winks is no game for trucks to play. William Mosher told police that his coal truck struck a block of wood, flipping it 20 feet through the air, until it scored a bullseye by shattering a laundry window.

**Why don't you get your "For Rent" sign where most people will look—in The Herald want ads. Phone 444.**

**SETS OF 50 ANNOUNCEMENTS**  
Special \$4.95  
(Usually sold at \$7.50)

**Torrance Herald**  
1336 EL PRADO  
Phone 444

**Birth Announcements**  
Larger announcement card and tiny name card for babies tied together with ribbon. Printed in Old English with colored bordered cards and envelopes, — blue for boys, pink for girls.

**Flour**  
"Flourish's Best" . . . No. 10 39¢  
Pillay's PANCAKE FLOUR . . . 17¢  
"Beauregard" MATHEWS . . . 6 boxes 19¢  
Delicious CORN CIX . . . 2 page 23¢

**Flour**  
"Flourish's Best" . . . No. 10 39¢  
Pillay's PANCAKE FLOUR . . . 17¢  
"Beauregard" MATHEWS . . . 6 boxes 19¢  
Delicious CORN CIX . . . 2 page 23¢

**Flour**  
"Flourish's Best" . . . No. 10 39¢  
Pillay's PANCAKE FLOUR . . . 17¢  
"Beauregard" MATHEWS . . . 6 boxes 19¢  
Delicious CORN CIX . . . 2 page 23¢

**Flour**  
"Flourish's Best" . . . No. 10 39¢  
Pillay's PANCAKE FLOUR . . . 17¢  
"Beauregard" MATHEWS . . . 6 boxes 19¢  
Delicious CORN CIX . . . 2 page 23¢