

County Building Hits Boom Stride

Unmistakable indications that the long-predicted housing boom has struck Los Angeles county with full force was seen by county officials today in the monthly report of Chief Engineer William J. Fox of the county building bureau.

Gain of more than 60 percent over figures for the corresponding period of last year was shown by the figures, analyzed today as to classification. The month's total was \$2,626,123.

Torrance Herald
And The Lomita News
Published Every Thursday
Grover C. Whyte
Editor-Publisher
1336 El Prado, Phone 444
Torrance, Calif.

Entered as second class matter January 30, 1914, at post office, Torrance, Calif., under Act of March 3, 1897.

Official Newspaper of City of Torrance
Adjudicated a Local Newspaper By Superior Court, Los Angeles County.

\$12⁵⁰
ALLOWANCE

On Your Old Electric Sweeper (for a limited time)

on
The New UNIVERSAL CLEAN AIR CLEANER



CLEANS - DUSTS
SHAMPOOS
DEODORIZES
SPRAYS - DEMOTHS



There is an attachment for cleaning all hard-to-get-at places from floor to ceiling

Complete with Attachments **\$59⁹⁵**
Allowance for Old Sweeper **\$12⁵⁰**

YOU PAY \$47⁴⁵
EASY WEEKLY TERMS

SERVICE ELECTRIC CO.
EL PRADO and SARTORI
Phone 238

CITY'S WATER USE INCREASE TOPS IN S.C.

76 Percent Increase in Consumption During Five-Year Period

With Torrance's amazing gain of 76 percent in five years leading the entire parade, the increase in water consumption by the 13 cities in the Metropolitan Water District during the period 1933 to 1938 was hailed this week as basic proof of the advance in population and industrial growth in Southern California.

The figures announced by the

District officials revealed a marked and continuing increase in the number of water service connections and in the consumption of domestic and industrial water in the 13 cities who will share in M.W.D. water the latter part of this year.

The greatest percentage of increase during the five-year period when major construction was under way on the 392-mile Metropolitan aqueduct was

shown by Torrance, which reported it used 76 percent more water in 1938 than it had used in the year 1933. Burbank showed an increase of 65 percent in its water consumption during the same period.

Other M.W.D. cities which recorded heavy gains in 1938 as compared to 1933 were Santa Monica with a gain of 36 percent, Fullerton 30 percent, and Anaheim 22 percent. Pasadena and Beverly Hills showed increases in their water consumption, during the period, of 15 percent and 13 percent respectively.

The statement listed Los Angeles city's water consumption for 1938 at 1,150,000,000 gallons more than in 1933 and that of the other 12 cities in the district at 3,700,000,000 gallons above the figure five years ago.

U. C. to Hear Benes
BERKELEY (U.P.)—Eduard Benes, former president of Czechoslovakia, will deliver the Charter Day addresses at both campuses of the University of California. He will appear at Los Angeles campus on March 29 and at Berkeley March 23.

Hospital Nursery Full of Sub-debs

Altho you naturally could not discern it, the nursery at Torrance Memorial hospital has a masculine appearance this week as result of the entry of five boys into that spotless, cheery room since last Friday.

The feminine touch is added by Jo Anne Eloise, daughter of Mr. and Mrs. A. F. Willis of Wilmington who made her appearance last Wednesday night, and several other girl babies who are shortly to be taken home.

New boy arrivals this week were the sons of Mr. and Mrs. K. L. Mohler of Wilmington, last Saturday; Mr. and Mrs. T. H. O'Brien of 1844 26th street, Lomita, Monday; Mr. and Mrs. Melvin Seifert of Hermosa Beach, last Saturday; Mr. and Mrs. J. E. Vise of Redondo Beach, last Friday, and Mr. and Mrs. George Wilson of Redondo Beach, last Sunday. Wilson is a clerk at the Columbia Steel office.

Regular Gas Thefts Draw Autoist's Ire

One gas theft from his car was enough to make C. L. Bell of 2216 Maricopa street peeved but when his auto fuel disappeared the second, then the third, four and fifth nights in a row it was time to call in the gen-darmes.

Bell registered his five complaints with local police Tuesday. He said his car was parked in front of his home when the thefts occurred.

The depression is said to have increased counterfeiting in the U. S. A. at least 400 percent.

DIRTY DISHES DEFEATED



Lomitans Form New Lodge

With a program featuring the Harbor City Girls' band, opening ceremonies inaugurating the Lomita Pioneer Council of The Practorians were held last Thursday night at the Odd Fellows hall on Wilmington-Redondo boulevard.

Officers seated by the new lodge were John Fuller, Augustus; Roy H. Berger and Albert L. Walters, tribunes; Doris Harris, counselor; Edgar Jorgensen and Cheisie P. Williams, centurions; Mary Jorgensen, soothsayer; Fred Calvin, Zygian; Walter Scott, recorder; Virgil Phippen, sentry; Harry Dean, musician, and Nadine Swanson, guest.

Nearly 250 attended the open meeting, officers said. The lodge membership includes several who were active in the former Lomita Artisan lodge as well as a number of new members.

Model Home on Acacia Is Sold

Mr. and Mrs. Samuel Rauss have moved into their new home at 708 Acacia avenue. This home is in the section which has been building up rapidly during the last few months. There are three new homes now under construction in the neighborhood and more are contemplated for the future. The transaction was handled through B. C. Buxton, 1900 Torrance boulevard.

Dishwashing, most troublesome of household tasks and last to succumb to the ingenuity of inventors, has received what appears to be a final defeat in the simple but effective machine pictured above. Consisting of a spray nozzle and circular brush which is fed hot, soapy water through an ingenious device attached to the hot water faucet, this appliance eliminates dishpans, dishrags and dish drying, and enables home-makers to do the dishes without immersing hands in water.

Local residents will be interested to learn that a complete dishwasher is now being given away to every purchaser of an automatic gas water heater. Details may be secured at the Southern California Gas company office on Cravens avenue or from any Torrance gas appliance dealer.

PEDESTRIAN MORTALITY

Three out of every four of the 290 pedestrians killed in Los Angeles city last year were more than 45 years of age.

Kidney Danger Signals

Getting up nights, frequent or scanty flow, burning, leg pains or backache may be nature's warning of functional kidney disorder. Danger Ahead. Make this 4-day test. Diuretic the kidneys. Help nature, eliminate excess acids and other wastes which can cause the irritation that wakes you up. Ask any druggist for a test box of Bukets. Locally at Beacon Drug Co.—adv.

IT'S YOUR GLANDS

Are You Gradually "Slipping" and Ageing Before Your Time?
Do You "Get Up Nights"? Bladder—Prostate.
Are You Nervous—Sleepless or Restless?
Do You Lack Ambition and Mental Power?
Do You Lack Ability To Think Clearly and Act Promptly?
Have You Constipation—Malnutrition and Indigestion?
Is Your Liver Sluggish and Inactive?
Do You Have Headache—Pain or Ache in the Back or Legs?
Have You Skin Eruptions? High or Low Blood Pressure?
Are You Despondent—Get the "Blues"?
Have You Gout? Anemia? Diabetes? Acidosis? Sinus Trouble?
Do You Lack Energy and Feel "All In"?
Are You Just "Dragging Around"—No "Pep." A Burden To Yourself and Others?



Dr. C. O. Gillett, D. C. Ph. G.
1339 POST AVE.
Next to Public Library
Torrance, Calif.
Ph. 876 — Hrs. 9 to 5
Tues., Thurs., Sat.

SPECIAL OFFER THREE TREATMENTS FOR \$2

In order to acquaint you with this wonderfully successful method, bring this "ad." a sample of the morning urine and \$2 for a personal examination and three treatments. No Extra Charges. In connection with this offer. Right reserved to refuse any case I cannot help.

THIS IS A GOLDEN RULE OFFICE

Offer good for a limited time only. Don't delay. Your health is your most valuable possession. Preserve it.

REMODELING SALE

Visit our completely remodeled store. Prices are lowest in town... quality and selection the highest!

WINE 50^c
Cal. Up

BOURBON WHISKEY 4-yr. old Bottled in Bond FULL PINT \$1.10

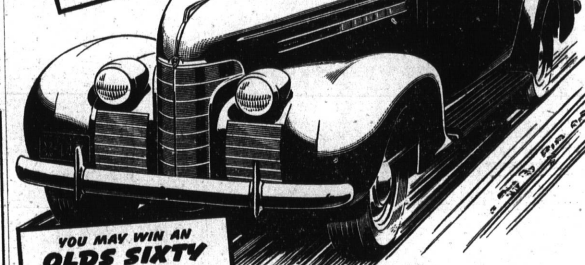
CLOSE-OUT! BRANDY RUM FULL ORANGE GIN PINT 59^c

Full Line Imported and Domestic Whiskies, Wines, Champagnes AT CUT RATE PRICES!

VILLAGE WINERY & LIQUOR STORES
1911 CARSON, Torrance
24513 Narbonne, Lomita

31 FREE OLDSMOBILES!

BIG, NEW 1939 OLDS "SIXTY" 2-DOOR SEDANS LIKE THIS—



YOU MAY WIN AN OLDS SIXTY THE ONLY LOW-PRICED CAR WITH ALL THESE FEATURES

Dual Center-Control Steering
Hand-Shift Gear Control - Self-Energizing Hydraulic Brakes - Massive I-Beam, X-Member Frame - 90 H.P. Econo-Master Engine - 100 Per Cent Full-Pressure Lubrication with Rifle-Drilled Connecting Rods - Wide-Vision Body by Fisher - Die-Cast Radiator Grille - Big, Streamlined Trunks on All Sedan Models

AND THE NEW RHYTHMIC RIDE

BASED ON
1. QUADRI-COIL SPRINGING
2. 4-WAY STABILIZATION
3. KNEE-ACTION WHEELS

EVERY DAY, ALL THIS MONTH, A NEW OLDSMOBILE GOES TO SOMEONE FREE!

JOIN the crowds that are visiting Oldsmobile show-rooms to get better acquainted with the new Olds Sixty—to get in on the big Nationwide Prize Contest Olds is staging this month. Every day, from March 1 to March 31, inclusive, Oldsmobile is giving away a brand new Olds Sixty Two-Door Sedan to someone, absolutely free! It's a big, roomy, handsome car with 90-horsepower Econo-Master engine and wide-vision Body by Fisher. The rules are simple and there is no obligation whatever. But to be eligible for prizes, entries must be written on an Official Entry Blank. Come to our showroom—drive the new Olds Sixty—enter the contest today!

ENTER THIS BIG NATIONWIDE CONTEST NOW! COME IN FOR OFFICIAL RULES AND ENTRY BLANK

MULLIN'S SERVICE

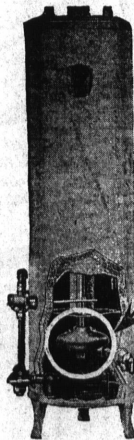
2053 Torrance Blvd.
Phone 320-J

NOW

And for a Limited Time Only

... A Time Saving DISHWASHER Included With The Purchase Of A GENERAL AUTOMATIC GAS WATER HEATER

PAY AS LITTLE AS
\$3⁰⁰
MONTHLY!



the Element saves the Tank

The most sensational offer in years! Imagine it... a marvelous, new \$19.50 Sprayfoam Dishwasher at NO EXTRA COST with the purchase this month of an automatic GENERAL Gas Water Heater.

Now is the time to think seriously of replacing your old, antiquated heater with a fully automatic GENERAL, the water heater with the circulating element that keeps the water in constant motion, hereby eliminating lime and residue deposits that attack the tank.

Fully guaranteed for FIVE YEARS. Heavily insulated, 100% automatic shut-off on both pilot light and burner. In a variety of colors.

EASY MONTHLY TERMS FROM GAS CO., BANK OF AMERICA or FHA.

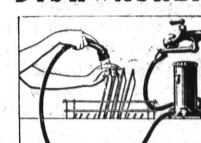
\$60⁰⁰

INSTALLED

TORRANCE PLUMBING CO.

F. L. PARKS
1418 MARCELINA (Across from Post Office) Ph. 60

SPRAYFOAM DISHWASHER



... includes heavy chromum-plated dishwasher; baskets for dishes and silver, with adjustable rack; hoses, nozzle and circular brush.

THE SPRAYFOAM DISHWASHER WILL DO ALL THIS:

SAVES TIME!
PROTECTS HANDS!
WASHES CLEANER!
LIGHTENS WORK!