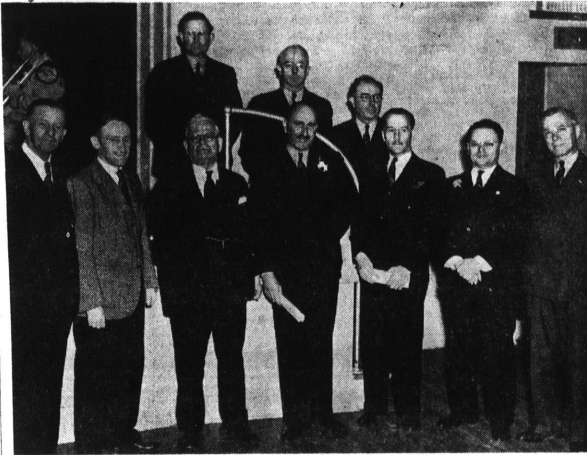


HARBOR CHAMBERS START NEW YEAR WITH GALA DINNER PROGRAM; 204 ATTEND GATHERING IN CIVIC AUDITORIUM

With 204 men and women from all parts of the district attending, the annual installation dinner-meeting of the Harbor District Chambers of Commerce last Thursday night in the Civic Auditorium was a signal success, according to retiring and new officers who were present. A business session was held late in the afternoon. Judge Irving P. Austin of Compton, who was ending his year as president, was master of ceremonies at the dinner program.

The district association urged the development of Crenshaw boulevard to provide another traffic artery from Los Angeles to the sea and passage of necessary legislation for expenditure of county highway funds on county systems or major highways which shall be continuous thru towns. The latter project has the recommendation of the Automobile Club of Southern California and opposition by the California League of Municipalities has been withdrawn, it was reported.

Members of the Torrance Woman's club prepared and served a fine turkey dinner to the guests in the Auditorium. W. S. Rosecrans, retiring president of the Los Angeles Chamber of Commerce, installed the new officers, including Louis H. Hamilton, Huntington Park, president, succeeding Judge Irving P. Austin of Compton; Ernest Gerlach, of Inglewood; Fred W. Cleland of Willowbrook; Frank L. Varney of Long Beach, and Roscoe Sevier



HEAD DISTRICT BOOSTERS . . . Here are the new officers of the Harbor District Chambers of Commerce who were installed at the Civic Auditorium last Thursday night. Front row, left to right, Colfax Bell, Redondo Beach, vice president; Ernest Gerlach, Inglewood, vice president; Fred W. Cleland of Willowbrook; Frank L. Varney of Long Beach, and Roscoe Sevier

W. S. Rosecrans, installing officer; Judge Irving P. Austin, Compton, treasurer and past president; L. J. Gilmeister, Torrance, secretary, and W. J. Crook, retiring secretary. Back row, left to right, Frank L. Varney, Long Beach, vice president; Fred W. Cleland, Willowbrook, vice president, and Roscoe Sevier, Gardena, vice president.

Band and Civic Spirit Commended

High praise of this city's Municipal band and cordial appreciation of the community's progressive spirit were extolled by two speakers at the Harbor District Chambers of Commerce dinner-meeting here last Thursday night.

The band, which presented a splendid concert before and during the dinner under the direction of John Watson, received a tribute from Supervisor Oscar Hauge of Long Beach. He termed the musicians a "splendid organization" and said "our own Long Beach band can't hold a candle to it."

In response to Mayor William H. Tolson's welcome, K. P. Frederick, suburban editor of the Long Beach Press-Telegram, made many more friends with his obviously sincere tribute to Torrance community spirit.

of Gardena, vice presidents; L. J. Gilmeister, Torrance, secretary, and Judge Austin, treasurer.

Says Outlook Is Bright
Alden W. Smith, president of the Torrance chamber, and Mayor William H. Tolson welcomed the group to this city. The address of the evening was given by J. Mortimer Clark, state real estate commissioner. Toward the close of the program light opera numbers of Miss Adele Arbo, soprano, of Inglewood, and Mark Cook, baritone, and the Arbo String Trio entertained.

The next meeting of the Harbor Chambers will be Feb. 9 at Bellflower. Among the guests were Supervisors Oscar Hauge and William A. Smith and Ray

Baldwin, president of the County Regional Planning Commission. There is only a six percent vacancy in family apartments, with rentals firm and showing a rise tendency. He declared: "We do not want a boom period or a fool's paradise, such as we have experienced in the past. But we do want to get every buyer located on the right piece of property where he will be happy."

The Commission functions to protect both the seller and buyer. In the last four years we have

stopped the sale of \$60,000,000 worth of worthless property, thus preventing the diversion of that amount into illegitimate channels. We have stopped the placing on the market of seventeen subdivisions because we thought that such tracts had a flood menace, a contention that was verified when reports came in during the floods of last March. Thus we not only saved money for the investor but possibly the loss of life. At the same time we refused to sanction the sale of 160 residential areas."

Cites Protective Rules

With an increasing population and a steady gain in buying power, the outlook for Southern California real estate is exceptionally bright, according to Commissioner Clark. He prefaced his prediction with an outline of what the State Real Estate Commission has done to raise standards of land transactions and protection to buyers. He said a recent survey shows that there is a two percent vacancy in single family dwellings, whereas

DISCOVERY MONTH



ELECTRIC COOKING COSTS 1/2 AS MUCH AS YOU THINK

Discover for yourself the real Economy of Modern Electric Cooking

The average homemaker who has never owned an electric range almost invariably estimates that electric cooking costs from two to five times as much as it really does. While again and again, in actual home cooking, it has been proved that electric cooking costs one-half as much as you think.

38,796 EDISON HOMES

NOW USE ELECTRIC COOKING

Now, during Discovery Month, go to your dealer and learn the facts about the remarkable cooking economy of the modern electric range.

GET A NEW Westinghouse ELECTRIC RANGE

MONTHLY TERMS as low as 20¢ a day

Low terms make it possible for everyone to enjoy low cost electric cooking. See the magnificent new Westinghouse ranges now on display.



AT YOUR DEALER OR THE EDISON OFFICE

TORRANCE HEADQUARTERS for WESTINGHOUSE
TORRANCE ELECTRIC SHOP • 1421 Marcelina • Ph. 567

WALTER G. LINCH

THE SOUTH BAY'S OLDEST and LARGEST DEALER

Takes Pride In Announcing
The Appointment Of

JACK MURRAY

WELL KNOWN TORRANCE CIVIC LEADER,
RESIDENT AND CITY COUNCILMAN

AS

SALES REPRESENTATIVE
IN TORRANCE and LOMITA

FOR

DODGE
CARS and TRUCKS
AND
DEPENDABLE
USED CARS



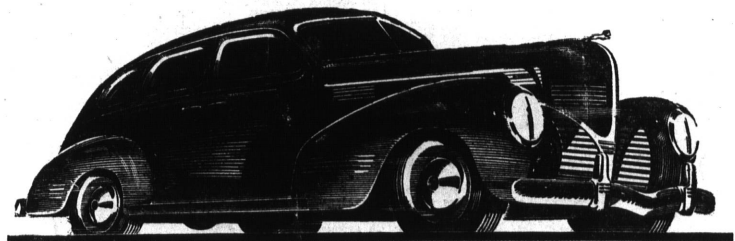
WALTER G. LINCH

DODGE and PLYMOUTH dealer in Redondo Beach for the past 16 years. Thousands of South Bay motorists know Walter Linch for honest, fair dealings and complete customer satisfaction.



JACK MURRAY

Long time resident of Torrance and well known throughout the entire South Bay area. Home address: 1912 Andree. Home phone Torrance 563.



The New DODGE "Luxury Liner" for 1939

• Sixteen years in Redondo Beach selling and servicing cars and trucks for Hermosa Beach, Manhattan Beach, Torrance, Lomita, Waverly and Palos Verdes Estates.

• You can depend on a WALTER G. LINCH dependable reconditioned used car.

• Local cars, many of them sold and serviced by us. In fact you may secure information regarding the condition of many of our used cars from the former owners. Ask us for the former owner's name. Come in and sit down with one of our courteous salesmen . . . get the complete deal; compare our cars, their condition, price, our appraisal on your present car, our new bank-like finance terms. Then you will know, as others do, why Walter G. Linch has gained such a host of friends during his 16 years in Redondo Beach.

WALTER G. LINCH

312 S. CATALINA AVE.

• REDONDO BEACH
ACROSS FROM ELK'S CLUB

• PHONE Re. 2122

OVER

ONE MILLION
Baby
Chicks — Ducks
and
Turkeys

IN PAST SIX YEARS
WERE RAISED
ON



Thousands of Poultrymen
Have Raised Brood After Brood
ON FEDCO

The Original Complete
Feed For All Ages

and Never Used a
Control Feed for

COCCIDIOSIS

TRY FEDCO

SOLED BY FEDCO DEALERS

16 YEARS SAME