

Auto Driven 17 Years
AKRON, O. (U.P.)—Lee Clough has driven his 17-year-old automobile a distance equivalent to more than 12 times around the earth at the Equator since 1921.



Order Now for Christmas!
SUITS and TOPCOATS
MADE-TO-MEASURE

\$32.50

This is a Christmas
TREASURE HUNT STORE

J. LEPKIN
Men's Tailor

1320 SARTORI Ph. 102

Delay Formation of Frolic Board

Because of the small attendance at the meeting, plans to perfect an organization for the direction of the second annual Torrance Factory Frolic in 1939 were postponed by the Coordinating Council until Monday night, Jan. 9.

At that time, according to President John E. Miller, a general committee will be chosen, consisting of one representative of every organization in the city.

From this committee an executive board of about nine members is to be elected and the board will pick the general chairman of the 1939 community celebration.

All organizations are urged to select their representatives to attend the Jan. 9 session of the Coordinating Council.

Better Shoe Repairing

at
FENWICK'S SHOE SHOP

1420 MARCELINA—Across From Postoffice

QUALITY — WORKMANSHIP

and the Best of

LEATHER or COMPOSITION

At Competitive Prices!

CHEMICAL INVENTION BY LOCAL MAN BASIS OF NEW INDUSTRY THAT STARTS HERE TODAY

A new industry, based on a chemical invention of a local man, made its debut in Torrance today. It was the Health-o-Bath Laboratories at 1838 El Prado where a new type of effervescent bath salts, discovered by Thomas E. Dougherty of this city, is being packed and distributed.

This product, known as Champagne effervescent bath salts, is being manufactured in the Overton Laboratories in Hollywood but the Health-o-Bath firm intends to launch its own factory here some time next year, according to Carl E. Marsteller, who is general manager of the distributing unit.

Dougherty, who is employed in the assembling department of the National Supply plant, worked on his idea of a carbonated bath salt for about five years before he hit on the formula which is now being processed.

The product is a brand new one on the market, Marsteller said. It generates carbon dioxide in water and cleanses and

refreshes the skin without injury to the natural oils.

"The effect is like bathing in champagne without the alcohol dries the skin," Marsteller said. "Champagne baths have long been known to medical science as a restorer of health and productive of genuine restfulness. We know the value of our product and advance sales indicate that it will prove exceptionally popular."

Chief backer of the enterprise is Clifton G. Erchenbrack of Hollywood while others interested are John Shidler, local attorney, and Wellington Rogers of Inglewood. The product is being packaged and sold in 1½ ounce containers. Two table-spoonfuls are enough for a bath. Purchasers of Champagne bath salts are being invited to participate in a profit-sharing plan based on a pyramid sales campaign arranged by Marsteller.

Spurlin, Civic Booster, Given Final Tribute

(Continued from Page 1-A)

big project was the construction of many homes on a tract located off Main street on 41st street. Learning of the potentialities in the new community of Torrance he came here and made this community his home. He lived at 808 Portola avenue at the time of his death.

He was deeply interested in oil development and lost heavily in the Julian debacle. He also lost a \$40,000 damage suit brought by a Julian stockholder following an altercation in which Mr. Spurlin had no part but for which he was held responsible as he was head of a group of Julian stockholders that was involved in the fistic encounter.

Long on Civic Pride

He was an indefatigable civic booster. Rare was the Chamber of Commerce civic association or improvement group meeting that did not command his interest and close attention. He never sought a public office but was deeply concerned with municipal affairs. At the time of his death he was a director of the All-Year Club of Southern California and it was to a meeting of this board that he was enroute when he was suddenly stricken a week ago.

Mr. Spurlin was survived by two sisters, Mrs. Robert Price and Mrs. Sara Green of Los Angeles; three brothers, T. J. Spurlin of Visalia, A. J. Spurlin of Bakersfield and J. R. Spurlin of Sacramento; and three children, Mrs. Dwayne Wilson of Los Angeles, Carlos of Eagle Rock and Marcus of Portland, Ore. A sister, Mrs. Metila Henly died at the age of 70 about two years ago.

CHAMBER DIRECTORS HONOR MR. SPURLIN

Directors of the Torrance Chamber of Commerce recorded "with a deep sense of personal loss, the death of Deane Spurlin" in the following resolution of sympathy to the family last Tuesday:

"He possessed a generous measure of qualities which earned for him a wide friendship and esteem. His long and useful career was characterized by a broad sympathy and deep understanding which enabled him to participate in numerous developmental problems, to the solution of which he gave generously of his time and energy. He was unselfish in his support of those ideals and objectives which he believed to be conducive to the common good.

"For more than 20 years he endeavored to advance the aims of good business and promote the economic security of Torrance as President and Director of the Torrance Chamber of Commerce, during which time he rendered invaluable service in efforts to meet the serious problems arising in the wake of distress. His reward was a place of recognized leadership in his own field of activity and in the field of Torrance civic affairs.

"By his death, the Chamber of Commerce has lost a valued member and counselor. To the members of his family and his associates the Board of Directors extends its deep sympathy."

Four Babies Born Here During Week

Four babies were born at Torrance Memorial hospital during the past week. Mr. and Mrs. C. W. Parton, 2583 El Dorado, welcomed a son on Tuesday. Parton is a mechanic at the Columbia Steel plant. Mr. and Mrs. Roy Willis of 1017-C Calverly, became parents of a daughter last Friday. Willis is a Columbia Steel foreman.

Mr. and Mrs. LeRoy Goodman of Redondo greeted a son last Friday and Mr. and Mrs. M. T. Tihen, also of Redondo, received a daughter on Monday.

Favor Extension of La Brea Ave.

Proposal of the Southwest District Highways association to have La Brea avenue extended between Hollywood and Inglewood was favored by George Jones, county road commissioner, in a report late last week to the board of supervisors.

The request is one of the first to reach the supervisors, and a list is to be revised shortly for submission to the 1939 session of the State Legislature. County regional planning engineers suggested a list to the state highway commission recently for consideration.

Ultimately it is proposed to extend La Brea southerly as a state highway to a connection with the Palos Verdes hills, and the Palos Verdes Homes Association has endorsed the request of the Southwest District Highway association.

Inclusion of La Brea in the state system of highways would mean that the state would be at the southern edge of Inglewood and the new Hollywood and Park horse racing plant at the southern edge of Inglewood, although it is proposed to include only that portion between Centinela avenue and Highland avenue, some 9½ miles, at this time.

Police Shame-Faced
CLEVELAND, O. (U.P.)—Police, spectators, defendants and witnesses held their noses at the central police station. Police dashed to the third floor where Edward Wyman, custodian, had dropped a jar of stench fluid.

Inflated Turkeys Deflated
ROME (U.P.)—Mons. Pasquetti, a poultry dealer got the idea of blowing up his turkeys with a pump so as to sell them the more easily. Everything went well until a turkey exploded and a piece of bone injured his assistant's eyes.

IT'S FUN TO GIVE ELECTRICAL GIFTS

AND FOLKS APPRECIATE GETTING THEM, TOO



It's easy to select electrical gifts that people really appreciate. See the wide assortment of delightful gifts at your dealer or Edison Office today.



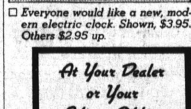
She would love to have a Toast-master Hostess Set. \$19.95



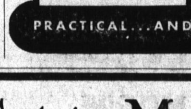
Does she need one of the new electric irons? \$2.95 to \$8.95



Give her a modern coffee maker. Shown \$15.00. Others \$3.95 up.



Everyone would like a new, modern electric clock. Shown, \$3.95. Others \$2.95 up.



An Automobile electric roaster is the gift supreme. \$24.95 with table, broiler unit \$4.95 extra.

At Your Dealer or Your Edison Office

PRACTICAL...AND SENTIMENTAL, TOO

We've Got to Make More Room for New Chevrolets

--Says ED THOMPSON, "The Man Who Treats You Right"

Hence This CLEARANCE SALE OF BETTER USED CARS

1939 BRAND NEW FORD V-8 "85" DELUXE SEDAN...
Mileage only 60 miles. This car was traded in on a new Chevrolet. To be sold at a discount!

1938 Chevrolet DeLuxe Coupe
1937 Chevrolet Sedan
1937 Chevrolet Coupe
1937 Chevrolet Touring Sedan
1936 Chevrolet Sedan
1935 Ford Sedan
1934 Ford Sedan
1935 Plymouth Sedan
1934 Plymouth Sedan
1934 Plymouth Coupe

All of Ed's Cars Carry a 100% Guarantee! It is a pleasure to buy from Ed. No one in the U.S.A. Can or Will Treat You Any Better than Ed Thompson!

MANY MORE TO CHOOSE FROM! BUY A USED CAR AND TAKE A TRIP!

IS YOUR CAR SAFE?

You are invited to have a FREE check-up with our new SCIENTIFIC MAN-BEE WHEEL ALIGNMENT EQUIPMENT. It stops SHIMMY, TIRE WEAR, WANDER, and HARD STEERING!

This Means Dollars and Safety to You!

• DO YOU KNOW... That a misalignment of 1/8 inch means your car is slipping sideways 32 feet every mile?
• DO YOU KNOW... That a misalignment of 1/2 inch means your car is slipping sideways 128 feet every mile?
• BRING YOUR STEERING TROUBLES TO US. WE HAVE A FACTORY TRAINED OPERATOR TO GIVE YOU HIS PERSONAL ATTENTION!

Ed Thompson

"THE MAN WHO TREATS YOU RIGHT"

Torrance
1600 Cabrillo
PHONE 692

Redondo Beach
129 S. Catalina
PHONE 8122

Hermosa Beach
Hermosa Ave.
PHONE 3067

Western Auto Supply Co's Christmas

Budget **STRETCHING**

SALE

SAVE MORE ON Gifts

2 Big RADIO

Extra Specials!

SALE PRICES

on these two

Electric Push Button Tuning

Western Air Patrols

8 Tubes

Sloping Panel

World Reception

SALE PRICE

\$64.95

EASY TERMS

A gift that will bring happiness to any home... Beautiful cabinet—marvelous performance. Such modern features as easy vision sloping panel—Cathode Ray tuning eye for hand tuning—and eight push buttons for favorite stations.

Big 13 Tube Console

SALE PRICE

\$79.95

EASY TERMS

You can't equal this radio at any other store! See it—hear it—and you'll agree that you can't give a finer present...

Give Seat Covers!

They'll be welcomed by every car owner... and you'll welcome the savings you will make... at "Western Auto." The largest selection of smart, snug fitting Seat Covers in town!

Ask for Our LOW SALE PRICES!

Reg. \$2.49

A Splendid Gift

Air Blast Horn

\$1.69

All electric... Loud, pleasing, long range tone, and built for hard service. 15½ inches long. Complete with relay.

Here's the sale that solves your gift problems... and your budget problem too... OPEN TO 9 P. M., DEC. 19, 20, 21, 22 AND 23

Here Are Only a Few of the Many SALE Specials!

You'll Make Youngsters Happy With This

Streamline Western Flyer

Sale Price \$23.95

Beautiful colors, 100% American made. Rugged, easy riding, and choice of three famous coaster brakes.

Ask for low prices on other models.

WESTERN GIANT

Traveler

Bike Tire

88c

Two-ply Quality Non-Skid Tires. 24½ inches.

Reg. \$1.29

Grille Guard

77c

Guaranteed rustproof. Extra strong Chrome plated. 24½ inches.

Reg. \$1.45

Looking Cap

98c

Hinged type. Rose anodized to look like chrome. 11½x23½

Reg. \$1.29

Rubber Blade

Auto Fan

\$1.89

A year around driving need. Reg. \$2.89... Two speeds, 6-inch speed. Safe, silent, more breeze, less current.

Reg. \$2.89

Pecoryn Gloves

\$1.98

Splendid quality, soft, durable... Carefully tailored and strongly stitched. C210

Reg. \$2.49

Jug

\$1.22

Keeps contents hot or cold a long time. Porcelain lined. C204

Reg. \$1.45

Wide Mouth

Globe

\$1.79

3½ in. high—shows in lists shows 4 in. wide—broadcast stations. W123

Reg. \$1.45

Wide Mouth

Globe

\$1.79

3½ in. high—shows in lists shows 4 in. wide—broadcast stations. W123

Reg. \$1.45

Wide Mouth

Globe

\$1.79

3½ in. high—shows in lists shows 4 in. wide—broadcast stations. W123

Reg. \$1.45

Wide Mouth

Globe

\$1.79

3½ in. high—shows in lists shows 4 in. wide—broadcast stations. W123

Reg. \$1.45

Wide Mouth

Globe

\$1.79

3½ in. high—shows in lists shows 4 in. wide—broadcast stations. W123

Reg. \$1.45

Wide Mouth

Globe

\$1.79

3½ in. high—shows in lists shows 4 in. wide—broadcast stations. W123

Reg. \$1.45

Wide Mouth

Globe

\$1.79

3½ in. high—shows in lists shows 4 in. wide—broadcast stations. W123

Reg. \$1.45

Wide Mouth

Globe

\$1.79

3½ in. high—shows in lists shows 4 in. wide—broadcast stations. W123

Reg. \$1.45

Wide Mouth

Globe

\$1.79

3½ in. high—shows in lists shows 4 in. wide—broadcast stations. W123

Reg. \$1.45

Wide Mouth

Globe

\$1.79

3½ in. high—shows in lists shows 4 in. wide—broadcast stations. W123

Reg. \$1.45

Wide Mouth

Globe

\$1.79

3½ in. high—shows in lists shows 4 in. wide—broadcast stations. W123

Reg. \$1.45

Wide Mouth

Globe

\$1.79

3½ in. high—shows in lists shows 4 in. wide—broadcast stations. W123

Reg. \$1.45

Wide Mouth

Globe

\$1.79

3½ in. high—shows in lists shows 4 in. wide—broadcast stations. W123

Reg. \$1.45

Wide Mouth

Globe

\$1.79

3½ in. high—shows in lists shows 4 in. wide—broadcast stations. W123

Reg. \$1.45

Wide Mouth

Globe

\$1.79

3½ in. high—shows in lists shows 4 in. wide—broadcast stations. W123

Reg. \$1.45

Wide Mouth

Globe