

Wholesale "Head-Lopping" Expected to Follow Olson's Taking Governor's Office

DEMS SIGHT END OF 45-YEAR FAMINE

By UNITED PRESS
The Democratic victories in the state elections, led by the triumph of Culbert L. Olson over Frank F. Merriam for the governorship, struck the state administration with the force of a tidal wave.

Aided by a top-heavy Bourbon registration and riding the tide of a growing demand for liberalized old age pensions, the Democratic party came back to power in California and gained control of the state's patronage for the first time since the days of "Buckboard Jim" Budd in 1894.

The democrats controlled the assembly in 1937, but without the governorship and a majority in the senate were unable to make much headway. But the tide has reversed and now the Democrats, adhering closely to the well established political practice, will administer California's affairs in great measure for the next four years at least.

Pressure to be Great
The Republican party retained control of the senate, which may prove a stumbling block to some of Olson's proposed adjustments in the governmental structures. Yet because the governor has the final say on all legislation passed it is believed the GOP upper house members may have to make their peace with the executive office to get their home town measures signed.

Tremendous pressure will be on Olson from the day he takes office. He promised reform on a large scale; he indicated that a pardon for Thomas J. Mooney may be among the first acts of his administration; he denounced the GOP as reactionaries and will be held to account by the liberal wing of the electorate which supported him on that basis.

All of these things add up to a large scale headache for an incoming governor. Olson will be faced with the task of finding replacements for key positions now held by Republicans. The high salaried positions of director of finance, director of public works, superintendent of banks and dozens of lesser posts will be taken over by Democrats. The Democratic political famine out-ranks the seven lean years of the Bible by a wide margin and the victors would be something less than human if they did not capitalize on their advantage.

Favors Self-Help
Olson's political and economic beliefs stem from a concept that is directly opposed to the conservative line established and adhered to by the Republican party for so many years. Indeed, the governor elect has already stated that in many respects the new program will approach the New Deal's approach to public questions.

As the returns clearly showed a Democratic victory Olson was pressed for a statement concerning his plans for dealing with unemployment. He charted a course which was widely interpreted as resembling the production for use idea advanced by Upton Sinclair. Olson was chairman of the Democratic state committee when Sinclair made his unsuccessful bid for governorship in 1934. Since election night, however, Olson has emphasized that his ideas on unemployment are not those of the Sinclair-EPIC program.

He promised aid to unemployed self-help cooperative and expressed the belief that a "sympathetic state government" can do much toward working out the rehabilitation of needy indigent

Chevrolet Takes Big Strides Ahead for 1939



New Aero-stream styled bodies combine with major mechanical improvements to provide new beauty, safety, comfort and operating ease in the 1939 Chevrolets, presented October 22, and featured at the big auto shows this month. The new models are offered on two chassis, the Master De Luxe and the Master 85, both of which are powered with Chevrolet's famous six-cylinder valve-in-head engine. A new vacuum gear shift mechanism with steering column control, optional on all models at small extra cost, does 80 per cent of the work of shifting gears. The Master De Luxe series features a new riding system, in which a brand new Chevrolet Knee-Action mechanism is scientifically co-ordinated with new ride stabilizer and double-acting hydraulic shock absorbers to furnish a smooth, soft ride. Central picture is the new Master De Luxe Sport Sedan. Upper right: front right view of the 1939 car; Upper left: Master De Luxe front suspension unit, complete; Lower left: accessibility and finger-tip ease of operation are two major features of Chevrolet's vacuum gear shift with steering column control; Lower right: As the handbrake on all models is relocated under the cowl, front compartment floor is cleared in cars with vacuum gear shift.

groups. Sinclair also favored the self-help idea with the idea of abolishing direct relief, in the hope of lightening the burden on taxpayers. But Sinclair's ultimate aim was toward elimination of the profit motive. Olson has stated this objective is not his intention.

Welcomes Retirement
The new governor will confer with President Roosevelt on one of California's most vital problems: care of the migrant army of dust-bowl refugees from the plains area of the middle west and southwest. Also scheduled for immediate attention are a thorough audit of state finances and drafting of legislation covering mediation of labor disputes.

There is good reason for believing that when all the shouting was over Governor Merriam really did not feel so badly. Reporters at the capitol, in close touch with the 72-year-old executive, thought they detected throughout the campaign a lack of enthusiasm on the governor's part.

Merriam followed political custom in a message of congratulation to Olson and promised his full cooperation. The governor thanked the Democratic state committee when Sinclair made his unsuccessful bid for governorship in 1934. Since election night, however, Olson has emphasized that his ideas on unemployment are not those of the Sinclair-EPIC program.

He promised aid to unemployed self-help cooperative and expressed the belief that a "sympathetic state government" can do much toward working out the rehabilitation of needy indigent

GAFFER'S & SATTLER
certified performance GAS RANGES

BIG TRADE-IN ALLOWANCE!

Price At \$112.00
Less Allowance \$22.40
for Old Range... \$89.60

YOU PAY... \$89.60

Lamp and Clock Extra on Model Shown.

Gas Co. or Bank of America Terms.

LA MODE FURNITURE
1513 CABRILLO G. J. Arco PHONE 545

Increase In Vote Registration Reveals City's Growth In Decade

Growth of this city's voting strength at the polls, regarded as a reliable index to the city's growth, was shown today by comparison with figures of exactly 10 years ago, obtained at the office of Registrar of Voters W. M. Kerr.

Total vote cast in this city at the recent general election was 3,697, according to the semi-official returns. Exact total will not be made available until the official canvass is completed about two or three weeks hence by Kerr's staff.

This city's total registration for the election was 4,859. Thus it was computed that approximately 76 percent of the registered voters in this city actually went to the polls.

Columbia Steel Combines Plants in Bay Area

Pacific Works of Columbia Steel company, located at 16th and Folsom streets in San Francisco, will be amalgamated with the Pittsburg, Contra Costa county works of the steel company effective immediately.

While Pacific Works will lose its identity as an individual plant, operations will be maintained as at present. In making known the change O. L. Pringle, vice president in charge of operations, stated that henceforth the plant will be known as the rope and fence department of the Pittsburg Works and will operate under the jurisdiction of William Cohn, general superintendent of the Pittsburg plant.

INTEND TO WED

Carl L. Rogers, 22, Compton, and Patricia H. Bullock, 20, of 25904 Oak street, Lomita.

Joseph J. McNally, 22, of Los Angeles, and LaVonne C. Jewett, 18, of 2314 Sonoma avenue.

Cornelius De Jong 34, of Clearwater, and Grietje Van Der Leest, 23, of 1808 Sepulveda boulevard.

John E. Peacock, 29, of 2709 Via Anita, Palos Verdes Estates, and Beatrice E. Kemp, 25, of 2504 Via Ramon, Palos Verdes.

Marion H. Newman, 22, of 1313 Anapola, and Mary A. McElfresh, 18, of 2075 Torrance boulevard.

Twins, 76, Celebrate
SHENANDOAH, Pa. (U.P.)—Mrs. Mary Balliet of Shenandoah and Mrs. Eliza Timmins of Prackville, twin sisters who have observed their 76th birthday anniversary, believe they are among the oldest living twins in the country.

MAKE CHRISTMAS SELECTIONS NOW

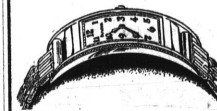
ON OUR EASY

PAY-AWAY PLAN

PAY NOTHING NOW!

GET A PIGGY BANK! CHRISTMAS!

SAVE FOR



21 Jewel BULOVA President
Natural Gold Filled, \$49.50



17 Jewel BULOVA Minute Man
Band to Match, \$33.75



17 Jewel BULOVA American
Clipper, \$29.75



17 Jewel BULOVA Princess
Solid Gold Case, Diamonds
all around, \$75



17 Jewel BULOVA Debutante,
Curved to Fit the Wrist, \$39.75



17 Jewel BULOVA Goddess of
Time, \$33.75



17 Jewel BULOVA Martha Wash-
ington, \$42.50—2 diamonds

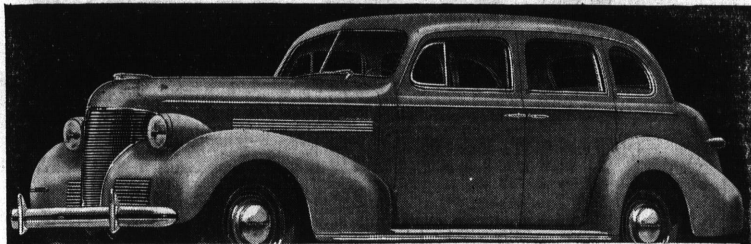


GRUEN CURVEX DUCHESSE
Full-size 17 jewel Precision
movement actually curved to
fill the wristform case. 14 Kt.
yellow gold filled. \$49.75

1503
Cabrillo

HOWARD'S JEWELERS
TORRANCE

Phone
411



Again More Quality AT SUBSTANTIALLY REDUCED PRICES

PERFECTED VACUUM GEAR-SHIFT
Enabling you to shift gears smoothly, silently, effortlessly. Available on all models at slight extra cost.

NEW LONGER RIDING-BASE
Giving the ride-roun of cars several inches longer in actual dimensions!

Chevrolet's Famous Valve-in-Head Six
Bringing you an unequalled combination of matched combination of power, acceleration, economy and dependability.

PERFECTED HYDRAULIC BRAKES
Perfecting Hydraulic Brakes, plus new Tiger-Control Emergency Brake, means more safety for your family!

ALL PRICES REDUCED
some models as much as

\$45

Check the greatly reduced prices of Chevrolet for 1939... Consider the greatly increased quality of this beautiful new motor car... Examine its many new features of styling, comfort, performance, driving ease... And then you'll know that, price for price, feature for feature, Chevrolet is the nation's greatest dollar value.

Buy a Chevrolet and be satisfied.

A General Motors Value

SEE YOUR LOCAL CHEVROLET DEALER

CHEVROLET

"CHEVROLET'S THE CHOICE"

New CHEVROLET 1939

ED THOMPSON
"THE MAN WHO TREATS YOU RIGHT"
1600 Cabrillo Avenue, TORRANCE Phone Torrance 592