

Dog Grows Reckless In Carrying Out Tricks

ROCHESTER, N. Y. (U.P.)—Annoyed at not being able to find his morning paper for several days, William Rickard finally has solved the mystery. Up a little earlier than usual one morning, Rickard saw a dog take his paper in its mouth and trot away.

An investigation disclosed that the dog had been trained to bring in his master's paper and, apparently liking the task, had gone to several neighboring residences to do the same thing.

Lights "Cracker as Cigarette" LAWRENCE, Mass. (U.P.)—James Dorman, 58, absent-mindedly took from his pocket what he thought was a cigarette, placed it between his lips and applied a match. The "cigarette" exploded, burning him painfully. It was a firecracker.

Gold in the Sewer COLUSA, Cal. (U.P.)—Repair crews cleaning the city sewers are finding enough pennies, nickels, dimes, quarters, dollars and gold rings to buy beer for themselves by the case.

ASSOCIATED GROCERS

SPECIALS FOR Friday and Saturday, September 23, 24

Large Pkg. Oxydol 20c

3 bars Camay Soap 17c

Ivory Flakes, sm. 9c

Large 21c

Med. Bar Ivory Soap, 2 for 11c

Large Bar 9c

HEINZ CUCUMBER Pickles 21c

GOLDEN SWAN MILK 16c

3 tall cans 16c

SUNSHINE KRISPY Crackers or Grams, 1 lb. pkg. 15c

Bab-O, 2 cans 21c

FRENCH'S 6 oz. jar Mustard 3c

9 oz. jar 12c

HYDROX 8 oz. ctn. Cookies 16c

BLACK SWAN CANNED GOODS

CORN, No. 2 can PEAS, No. 2 can STRING BEANS, No. 2 can SPINACH, No. 2 1/2

each 10c

GOLD MEDAL "Kitchen Tested" 5 lb. sk. Flour 24c

10 lb. sack 44c

1 lb. can Crisco 19c

3 lb. can 51c

DASH GRANULATED Soap, lge. 45c

DEL MAIZ 12 oz. cans Niblets 2 for 23c

HILL BROS. COFFEE Red Can 27 1/2c

DEL MAIZ Cream Style Corn 2 for 19c

17 oz. cans

Windex 14c

Cleans glass without water

SUNSWEEET 2 lb. pkg. Prunes, med. 12c

BLACK SWAN No. 2 1/2 can Peaches 2 for 25c

No. 2 1/2 can Pears 2 for 29c

Your Associated Grocers

RICHARD COLBURN 1801 Cabrillo Phone 110

DOAN'S MARKET 2223 Torrance Blvd. Phone 486

GEO. H. COLBURN 645 Sartori Phone 622

Torrance Herald

With Which Is Consolidated the Lomita News Published Every Thursday GROVER C. WHYTE, Editor-Publisher 1336 El Prado, Telephone Torrance 444 Torrance, California.

MEMBER California Newspaper Publishers Association



MEMBER United Press Associations

Published weekly at Torrance, California, and entered as second class matter January 30, 1914, at the Postoffice at Torrance, California, under the Act of March 3, 1879.

OFFICIAL PAPER OF THE CITY OF TORRANCE Adjudicated a Legal Newspaper of Los Angeles County, Superior Court Case No. 218470. Dated March 22, 1927.

Subscription Rates In Advance Anywhere in Los Angeles County \$2.00 per year Anywhere in the U. S. Outside of L. A. County \$3.00 per year Canada and Other Foreign Countries \$5.00 per year Single Copies 5c

No Diversion Wanted

Gasoline tax diversion means inevitably an increased levy to be borne not by the wealthy alone but by virtually every self-supporting individual in the state. Highway building and maintenance must continue, and if funds now used for that purpose should be appropriated for other governmental functions the inevitable result would be an increase in the amount of the tax in order to carry on the present highway and road maintenance program.

Here in Torrance we have a direct interest in gasoline tax matters because any tax in excess of highway maintenance costs would be a deterrent to our industrial progress. Diversion of gasoline taxes would result in greater expense to our citizens and corresponding reduction in orders to some of our industries which benefit from state, county and city road work.

Results of a survey made by the U. S. Bureau of Labor Statistics prove conclusively that those who would suffer the most from such an increase are the families of ordinary working men. Government statistics prove that in large sections of the country as many as 20 percent of the families with incomes of \$15 per week or less own automobiles. Further, the majority of automobile owning families in the nation have incomes of \$30 per week or less.

Would Tempt Other Raids Average annual total of gasoline taxes paid by these people has been shown to be about \$50, or perhaps the equivalent of all earnings for two weeks out of each calendar year.

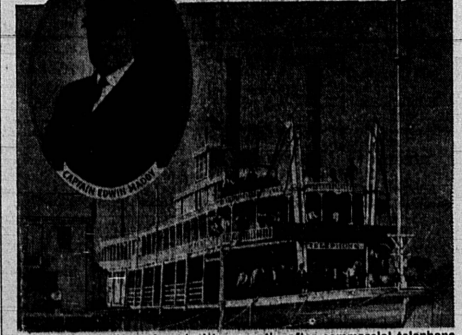
As long as these tax receipts are used for highway purposes alone, however, there is a fair return for labor. As pointed out by John F. Gatelee, president of the Massachusetts Federation of Labor, each \$1,000,000 expended on streets and highways provides full-time employment for 1,000 men and \$3,150,000 in wages and trade for 24 related industries which supply road materials, equipment and services.

As a matter of enlightened self-interest every Californian should do anything and everything in his power to the end that gasoline taxes not be diverted to purposes not connected with street and highway work, and to prevent any increase in the rate of gasoline tax in the future.

Otherwise the funds derived from the levy on motor fuel will be subject to repeated raids and will be a constant temptation to those forces which find it simpler to increase taxes than to exercise economy and efficiency in government.

Steamer "Telephone" Was Queen of the Ohio When Telephone Was Young

Left: The "Telephone" Captain, eldest of the three brothers who owned her.



The "Telephone" was launched two months after commercial telephone service was first established, and for seven years sailed the Ohio and Great Kanawha rivers.

Two months after the world's first commercial telephone exchange was opened in New Haven, Conn., in January of 1878, plans for a new trim river packet were made known by the Maddy brothers, of near Gallipolis, Ohio. She would, they announced, be called the "Telephone," a name that stirred the imagination of residents along the upper Ohio River because Alexander Graham Bell's invention was still new and mysterious.

For seven years the steamer "Telephone" was queen of the upper Ohio and Great Kanawha rivers, and did much to publicize the instrument from which she derived her name.

The "Telephone" was a stern-wheel steamboat, 150 feet in length by 25-foot beam. She was launched at Dayton, Ohio, on April 27, 1878, and within three weeks was towed to Portsmouth, Ohio, for the reception of her machinery. On July 11 all was in readiness, and at nine o'clock in the evening she started for Pittsburgh on her maiden trip. In 1884 the "Telephone" is making a landing, broke her shaft and dropped her wheel into the river, she was towed to Point Pleasant,

where she was docked. While repairs were being made, she was thoroughly overhauled and her hull widened from 25 to 30 feet. She was now considered one of the lightest boats on the river, drawing only 20 inches of water.

Leaving Marietta at 7 a.m. on January 2, 1885, she had landed at Hookport and, while backing out, a field of shore ice, loosened by her swells, struck her about midships. When it was discovered that she was taking water, she was headed for the Ohio shore, and sank at 11 a.m. about a mile below Big Hocking River, at Lee Creek. The passengers were landed safely, all freight was saved except one keg of powder, and the piano was the only piece of furniture not saved.

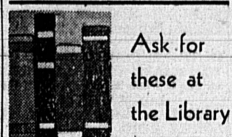
She settled on a bed of rocks, and later submarine divers made all preparations for raising her. But the river, rose, and this, together with floating ice, made the destruction of the craft complete.

Sp. Old Man River collected his toll and brought to a close a fascinating chapter of river navigation, which in no small way helped make the name "Telephone" familiar in the early pioneer days of the telephone industry.

LEISURE TIME OUTLETS PROVIDED BY VARIETY OF RECREATION PROJECTS

By DALE RILEY City Recreation Director

In these days of shorter working hours—days when American youth has difficulty in finding jobs, when the man past 40 has difficulty in holding a job, when children are eagerly searching for something to do outside of school hours—we recognize the need and value of public recreation.



Ask for these at the Library

I SEE A WONDEROUS LAND by Gudmundur K. Snotun. Slowly in stark dramatic fashion is unfolded one of the grandest yarns ever brought home by a sailor, the story of Lief Ericsson's discovery of America. Retold in fiction form, this glowing story laid in Iceland and Greenland in the tenth century will delight whoever enjoys Scandinavian literature. Names we have read in our schoolbooks—Erik the Red and Lief the Lucky—stand forth as shining vital personalities traversing the uncharted Atlantic in their dragon-prowed wooden vessels, discovering Labrador, Newfoundland, Minland and Maine. Time and distance assume quite different meaning in that world of almost a thousand years ago but men and women and human motives are intimately the same.

FIFTY SOUTH TO FIFTY SOUTH by Warwick M. Tompkins, U.S.N.R. In sailing ship days when a man spoke of rounding the Horn and mentioned the time it took him he meant the time from crossing the 50-degree parallel in the Atlantic until he crossed the same parallel in the Pacific or vice-versa. It was the universal measure of the Cape Horn passage among sea-faring men. It is a fine title for this book which records a Westward passage around the Cape, according to one who has made the trip (and there are few left now) and brings to life the old-time collections of the scene. "The scream of the Cape Horn gales is in it; the unnatural bleakness, emptiness and hardness, that are the chief characteristics of that abandoned and desolate place. It is hard to say which of the three features is the most noteworthy of the book, the splendid narrative, or the excellence of its appendix which is literally a compendium of modern seamanship based on ten years of experience, or the beauty of its pictures, some taken from Capt. Tompkins' motion pictures of Cape Horn gales."

RAILROADMAN by Chancey Del French. Henry Clay French's life told for him by his son, begins at the age of seven when he decided to become a railroad man, covering 50 years of railroad growth during its most hazardous period. This is really a book about industry, told by a worker thoroughly familiar with all its phases; a story of railroading by a railroad man. French held almost every important operating job from telegraph operator, station agent, switchman, brakeman, fireman, conductor. He lived through cowboy sk-shooting and hand train brakes; saw service on 21 mid-western and far western roads, handled Kansas steers and Oregon lumber. Definitely a man's book with the masculine virtues of terseness, accuracy and matter of fact honesty it is almost an epic of the railroads.

THE STORY OF MELINA BOURKE: Here's the story of a life and the opening of a country, so interwoven it's difficult to tell where one begins and the other leaves off. Melina at 14 tumbled over a convent wall to whom she was eloping. The convent was just outside Capetown and from that moment (1889) her life was woven into South Africa. Early days in Kimberly; a long "trek" across deserts to where gold was reported; encountering the Matabele raid on the way; pioneer life in Bulawayo where she met and formed a life long friendship with Dr. Jameson.

The excitement of the Jameson Raid, an active part in the Boer War where she carried on a nursing unit, are but few of the adventures packed into a lifetime. Had these happened long ago you would not be surprised that it was only yesterday. It is a very real and vivid picture and one which will appeal to a wide range of readers.

What Next? SAN FRANCISCO (U.P.)—Officials of the Golden Gate Exposition have contracted for a giant crane that will hoist visitors 166 feet into the air for a bird's eye view of anything they want to see.

Torrance, alive to the fact that wholesome recreation is vital to public welfare, maintains play spaces and proper recreational activities at the city park, with handicraft and creative arts at the Recreation building.

There is a city ball league for boys under 15 years of age, and another league for boys above 15 years. Under trained supervision, games are arranged and played. Emphasis is placed on fair play, control of temper, good sportsmanship, and development of healthy bodies. The men's city league have special arrangements for night and Sunday games.

Community Quilting At the Recreation Center, one learns to do by doing. There is joy and satisfaction for child or adult in planning, creating, and finishing an article of hand-

craft. Copper tooling, leather tooling, basket weaving, show card lettering, and picture painting on glass, wood, canvas, velvet, and paper are but a few of the subjects taught. Handicraft provides one of the most profitable means of enjoying leisure time.

Of interest to girls and women is the sewing club at the city park, known as the Think of Others club. Starting 15 months ago with but 8 participants, it now boasts a membership of 27. While all types of sewing are offered, special interest has been developed in quilting. Here, whether a member or not, one may bring material, and all present work to complete the quilting. They ask only \$1 for each one hundred yards of thread. So far, 43 family-sized quilts and 22 baby quilts have been made—a record to be proud of.

YOU'RE A cinch TO MAKE A HIT WHEN YOU SERVE A SAFEWAY GUARANTEED STEAK!

There's no surer way of winning a smile of approval from friend husband or dinner time than to serve him a Satisfying, tender, juicy steak, cut from Satisfying Guaranteed Beef. It's a method that's guaranteed to work. These fine steaks have been properly aged and trimmed waste-free—they give you extra value, extra goodness. Order one or more from your Safeway meat stall this week!

SPECIAL LOW PRICES NOW!

ROUND STEAKS INSIDE CUTS lb. 29c

Inside or bottom cuts of round. (Fancy Center Cuts, per pound 31c)

SIRLOIN STEAK PIN BONE CUTS lb. 35c

Choice steaks of Safeway Beef. (Pin Bone Sirloin Steaks, per pound 37c)

T-BONE STEAK OR CLUB lb. 39c

Your choice of T-Bone or Club Steaks. Guaranteed to be tender.

PORTERHOUSE lb. 42c

Here's perfection in steak! Tender, juicy, full-flavored Safeway Beef.

FANCY BEEF ROAST 18c

Center cut 7-bone. (Pot roast lb. 16c)

LEG OF LAMB 29c

Cut waste-free. No shank. (lb. 25c)

LAMB SHOULDER ROAST 21c

Full center cut. (Blade cut, lb. 18c)

SLICED BACON 15c

Corn King Brand. 1/2-lb. Ocio pkg. Each

PEACHES STOKELY'S FINEST 2 No. 2 cans 23c

Stokely's Finest—Your choice of sliced or halved fruit, packed in heavy syrup. Buy a dozen cans at this price!

CORN OR PEAS STOKELY'S FINEST No. 2 can 10c

Your choice of Stokely's finest country gentleman corn or Honey-Pop peas. Packed in golden-lined cans.

GRAPE JUICE Pint bottle 13c

Red Wing Brand. Made from ripe Concord grapes. Quart size bottle 23c. Stock up at Safeway this week!

CHECK THESE PRICES

Syrup Sleepy Hollow Brand 47c

Crisco Vegetable 1-lb. can 19c

Swans Down Cake Flour 24-lb. box 23c

Pillsbury Wheat Bran 10-lb. box 10c

Post Toasties Double Crisp 8-oz. box 6c

Ralston's Oats Checker Brand 48-oz. box 17c

Waldorf Tissue In self-wrapped 12-oz. box 4c

Laundry Soap Crystal 12-oz. box 3c

Ivory Soap Flakes 12-oz. box 21c

Camay Toilet Soap 2 bars 11c

Oxydol Household Soap 20c

Facial Tissue Lady Dainty Brand 500 sheets, soft 14-oz. box 9c

Lady Dainty Facial Tissue 500 sheets, soft 14-oz. box 18c

Old Dutch Household 24-oz. box 20c

Su-Purb Soap Granulated, Easy 24-oz. box 35c

Favorite Matches Carton of six boxes 16c

Prices effective through SATURDAY, SEPTEMBER 24, 1938

In Safeway-operated departments of stores within thirty-five miles of Los Angeles.

Healthy Children

Need

Plenty of Meat

Smart mothers, aware that their growing school children require abundant energy, are serving their kiddies MEAT . . . bone-building, muscle-building MEAT. Too, MEAT gives them the extra energy they need, keeps them rosy-cheeked, happy and healthy. FOR THE BEST IN MEATS ALWAYS SHOP AT . . .

GRUBB'S MARKET CHOICE MEATS PHONE 779-TORRANCE IN SAFEWAY STORE 1929 CARSON ST.



ROUND STEAKS INSIDE CUTS lb. 29c

SIRLOIN STEAK PIN BONE CUTS lb. 35c

T-BONE STEAK OR CLUB lb. 39c

PORTERHOUSE lb. 42c

FANCY BEEF ROAST 18c

LEG OF LAMB 29c

LAMB SHOULDER ROAST 21c

SLICED BACON 15c

PEACHES STOKELY'S FINEST 2 No. 2 cans 23c

CORN OR PEAS STOKELY'S FINEST No. 2 can 10c

GRAPE JUICE Pint bottle 13c

Red Wing Brand. Made from ripe Concord grapes. Quart size bottle 23c. Stock up at Safeway this week!

Valencia Oranges

Small Size 5c

Medium Size 15c

Large Size 10c

Bellflower Apples 7 lb. 15c

Golden Pears 2 lb. 9c

Bartlett Pears 5c

Idaho Prunes 5c

Solid Lettuce 5c

Potatoes 10 lb. 18c

Favorite Matches 16c

Prices effective through SATURDAY, SEPTEMBER 24, 1938

In Safeway-operated departments of stores within thirty-five miles of Los Angeles.

CANNED FOODS

Grapefruit Stokely Brand No. 2 10c

Fruit Cocktail Stokely's Finest No. 2 19c

V-B Apple Sauce No. 2 can 10c

Grapefruit Juice Ariz. Sweet No. 2 13c

Grapefruit Juice Ariz. Sweet 48-oz. brand can 17c

Tomato Juice Stokely Brand No. 2 5c

Tomato Soup Van Camp 2 10-oz. 9c

Brown Crack Beans Stokely's 3 cans 25c

Kidney Beans Stokely's No. 2 29c

Stokely's Carrots Shonstring No. 2 10c

Fancy Tuna Chicken of Del No. 1 29c

Red Salmon Fancy Alaska Tall can 16c

Canned Milk Max-I-mum 2 tall 18c

OTHER LOW PRICES

Ice Cream Party Pride Brand per 25c

Sherbet Party Pride Brand 10c quart 19c

Knox Gelatin For salads per 17c

Hasty Tapioca For dessert 8-oz. box 9c

Peanut Butter Beverly Brand 2-lb. 27c 1-lb. jar 15c

Oleomargarine Hood 2 for 23c

Fresh Bread Julia Lee Wright's 8c

Toasted Bread It's dated 1-lb. loaf 7c

Honey Maid Graham's 1-lb. box 16c

MORE BIG VALUES

Airway Coffee Ground to order 2 lb. 25c

Edwards Coffee Regular or Drip Grind 1-lb. can 22c

Lipton's Tea Black 1/2-lb. box 20c

Jane Arden Cookies Packed in per 10c

Mayonnaise Best Foods 28c quart 47c

Stokely's Catsup Tomato 14-oz. bottle 10c

Marshmallows Fluff-a-Loaf 2 1-lb. boxes 23c

Cocoanut Bon Bons (Price ex-tax, .1463; sales tax, .0037) 15c

Brown Derby Beer Bottles 4 11-oz. 25c

Brown Derby Beer Pilsner Type 23-ounce bottles (Price ex-tax, .0606; sales tax, .0037) 15c

Excell Beer Deposits Extra On bottles (Price ex-tax, .0606; sales tax, .0037) 5c

Excell Beer Plus Deposits On bottles (Price ex-tax, .0606; sales tax, .0037) 25c

Rainier Beer This price in Los Angeles stores only (Price ex-tax, .0615; sales tax, .0037) 26c

NOTE: Beer is offered for sale