

Alcorn's ON TORRANCE BLVD.

Nationally Advertised Brands
Week Sept. 1 to 10!

BUY GOODS OF KNOWN QUALITY AT ALCORN'S
 WITH CONFIDENCE!

PATRONIZE YOUR NEIGHBORHOOD DRUG STORE
 and SAVE MONEY!!

WATCH for FREE SLIPS in PACKAGE ICE CREAM!

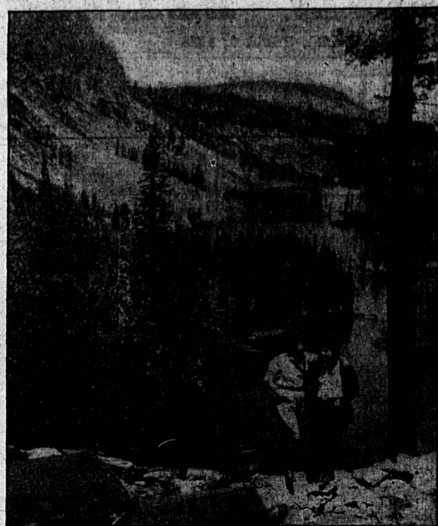
PLAZA
THEATRE
 HAWTHORNE, CALIFORNIA
 Telephone 299 "The Friendly Family Theatre"
 EARPHONES? ... YES!

Thursday-Saturday Sept. 1-3
DICK POWELL and "COWBOY FROM BROOKLYN"
PAT O'BRIEN in "FAST COMPANY"
MELVYN DOUGLAS in "MAGIC SCREEN FRIDAY!!"
FLASH GORDON SATURDAY MATINEE

Sunday-Tuesday Sept. 4-6
CONTINUOUS MONDAY-LABOR DAY!!
"LITTLE MISS BROADWAY" STARRING
SHIRLEY TEMPLE
and RICHARD "BLIND ALIBI"
and "COLOR CARTOON" - NEWS

Wednesday Only Sept. 7
DENIS O'KEEFE in "THE CHASER"
and The MAUCH "PENROD'S DOUBLE TROUBLE"
TWINS IN
\$\$\$ COME EARLY-DOORS OPEN 6 P. M.-\$\$\$

Labor Day Occasion for Outing



This Western beauty spot is only one of thousands that will lure motorists over the prolonged week-end afforded by Labor Day, according to the local manager of the Western Auto Supply Company, in announcing the close of his firm's Pre-Labor Day Sale of necessities for touring comfort and safety. Tires, batteries, motor oils, seat covers and scores of other articles are featured in the sale which ends Saturday, September third.

Bolt Splinters Rod, Angler Escapes Injury

FORT ERIE, Ont. (U.P.)—Jack Richmond, sat fishing at a shipyard slip on Niagara River near here, and got a bite. A moment later, a bolt of lightning knocked Richmond's fishing pole out of his hands, shivering it to bits. He was not injured.

The Herald—3 months, 50 cents.

State Fair Giant



The world's largest giant, 8 foot, 3 1/4 inch Robert Wadlow of Alton, Ill., will appear at the California State Fair and Exposition at Sacramento tomorrow and Saturday. The 20-year-old giant weighing 485 pounds will take part in a children's parade and miniature circus.

POST-SEASON OPERA

Winding up the 17th festival season of Symphonies under the Stars with a post-season event, Hollywood Bowl offers the beautiful and highly emotional Puccini grand opera "La Boheme," Wednesday night, Sept. 7.

JAYCEE OPENING

Graduates from the local high school who expect to enter Compton Junior College are notified that school will open Sept. 12. Those who will be entering the 14th year are to register on opening day, while 13th year students will register on the day following.

FAMED STARS IN NEW FILM

Movie audiences are due for three big surprises when they see their favorite stars in Paramount's new romantic fiesta, "Tropic Holiday," which opens tonight at the Torrance theatre. Bob Burns, the favorite son of Arkansas, quits the state he has made famous and becomes a Senatorial candidate from Oklahoma. Marjorie Reynolds comes down to earth as the secretary to a screen author and the elusive sweetheart of Burns, and Dorothy Lamour trades her sarong for the gay native costumes of southern Mexico.

Ray Milland, heading the cast as the Hollywood writer who tries to "get away from it all" in the tropics, has a "straight" role, reminiscent of the one he played so successfully in "Easy Living." He comes to Mexico to forget the movies and stays with Miss Lamour to forget the world, forsaking even his Hollywood sweetheart, blonde and lovely Binnie Barnes.

The comedy highlight of "Tropic Holiday" is Marjorie Reynolds' bullfight which she bravely undertakes for love of Bob Burns, the bombastic would-be-Senator from Oklahoma. For this unusual act, Marjorie trained under one of Mexico's foremost bullfighters, imported from his native country to teach the star all the tricks of his trade.

DETOUR

Col'm Under Construction
 By BETSY BYRNES

"Somewhere Beauty dwells, all undefined;
 For I have seen a rose unfold
 At dawn,
 And wonder grow
 In the eyes of a child."
 —Nellie B. Miller.

QUESTIONS

Last night we read in that charming book, "A City of Bells," that a man leant back restfully in his chair. The pronunciation of the word "leant" caused no end of a discussion. How do you pronounce it?

What is the difference between a gib and a jib?
 Next Monday will be Labor Day. Who inaugurated Labor Day, and when?

TODAY'S PROVERB

"He who stumbles twice over the same stone deserves to break his shins."
 Rather harsh viewpoint in that very old proverb, we must say!

ANSWERS

If you pronounce "leant" as "leant," you are very wrong, indeed! "Leant" sounds exactly like "lent" when it is properly pronounced.

A jib is a piece of metal used to hold parts of a machine in place, or to afford a bearing. A jib is a certain kind of a sail. It may also be the projecting arm of a crane. Or, again, jib may mean balk.

Labor Day was inaugurated by the Knights of Labor in 1882. Twelve years later, by vote of Congress, Labor Day became a legal holiday.

ADIOS

The following lines were given to us the other day. We think they are beautiful:

"Sleep, that comes like gentle rain
 To parched flowers on thirsty plain,
 Sleep, thou Heaven sent gain!
 Sleep, sweet nurse of those in pain,
 Forgetfulness of heart and brain
 Till morning comes again."

It pays to advertise in The Herald.

ON WORLD'S BRIGHTEST STREET



The world's brightest street takes the world's brightest star to its heart in "Little Miss Broadway," Shirley Temple's latest musical opening Sunday at the Torrance theatre. Shirley is surrounded by fun-making show people in the film, including (top, left to right and down) George Murphy, Jimmy Durante, Phyllis Brooks and Edna Mae Oliver.

STAR IN MUSICAL LAUGH ROUND-UP



It's a rip-roarin' romance when "Dead-Eye" Dick Powell meets "Prairie Pip" Priscilla Lane in the musical comedy, "Cowboy from Brooklyn" which opens tonight at the Plaza theatre in Hawthorne.

Around Hollywood Film Lots

HOLLYWOOD (U.P.)—One screen characterization can wreck an actor's career, declares Jack LaRue who has been working four years to win back the following he lost in a single picture.

LaRue says he learned his lesson with that one picture, "The Story of Temple Drake." Until he played in it, he thought it made no difference to the fans what character he portrayed so long as he did a good job of it. It does make a difference. That's why he turns down roles that do not give the villain a few good qualities.

In "The Valley of the Giants," LaRue is something of a bad man. He's a gambler and villain but he doesn't cheat and he protects the heroine. That's why LaRue took the role.

The slim, soft-spoken LaRue made an auspicious start in pictures as the priest in "Farewell to Arms." He seemed destined for stardom for his work in that picture. He was offered the role of Popeye in "The Story of Temple Drake" after George Raft refused the part. LaRue read the script, saw that it gave him a chance to do a great piece of acting and took the role.

When the picture was released, the critics raved about LaRue's work. But the fans didn't. Popeye was a despicable character without one saving grace. In hating the character, the fans also hated the man who brought him to the screen and almost ruined LaRue's career.

After that experience, LaRue carefully began rebuilding his place in pictures. Since then, he has turned down many parts.

FOX CABRILLO

SAN PEDRO

LAST 2 DAYS

"GIVE ME A SAILOR"

Martha Raye, Bob Hope, Betty Grable

"BOOLOO"

"THE WHITE TIGER"

SATURDAY

Swing On Ice!

"MY LUCKY STAR"

SONJA HENIE

Joan Davis, Cesar Romero

"GATE WAY"

Don Ameche, Arleen Whelan

REDONDO

SMOKING LOGES & BALCONY

REGULAR FRIDAY EVENING ATTRACTION

Playing!

"RACKET BUSTERS"

with Humphrey Bogart and George Brent

also Richard Dix in "SKY GIANTS"

Starting Sunday!

"ALEXANDER'S RAG-TIME BAND"

with Tyrone Power, Alice Faye and Don Ameche

CONTINUOUS SHOW

LABOR DAY

STARTING 1 p. m.

SHIRLEY IS N. Y. COP

Since the news has come out that Shirley Temple's chief ambition when she grows up is to become a police-woman, law-and-order organizations all over the country have hastened to grant that wish—and now, long before she reaches maturity.

Latest honor of this kind came when a registered letter from the New York City Detective Bureau was delivered to her on the "Little Miss Broadway" set at 20th Century-Fox. Inside was a formal notification that she had been made an honorary member of "New York's Finest," and a full-sized gold badge.

In addition to being Chief of her own unique police force—"with badges 'n' everything," Shirley is also "Los Angeles Junior Policewoman Number One," and is an honorary member of the Honolulu Police force, and of similar organizations scattered over the United States.

"Little Miss Broadway," her latest starring film, opens Sunday at the Plaza theatre in Hawthorne. George Murphy, Jimmy Durante, Phyllis Brooks and Edna Mae Oliver are featured, and the picture includes six new dance-song hits by Bullock and Spina.

STRAND
 FREE PARKING
 CATALINA at TORRANCE Phone 8300

REDONDO'S NEW SHOW PALACE!

KENO Friday and Saturday

We dare you to be here Friday, midnight

"Frankenstein"

"Dracula"

"Lonesome Ghosts"

PLAN FOR

California

STATE FAIR

World famous NIGHT REVUE

SEPT. 2 THRU 11

Sacramento

LOMITA THEATRE

10 24333-Narbonne 20

Tel. 243

Thurs., Fri., Sat.,

Luise Rainer—Robert Young

Melvyn Douglas in

"THE TOY WIFE"

and Patricia Ellis

and Donald Woods in

"Romance on the Run"

EXTRA ATTRACTION

FRIDAY NIGHT ON OUR STAGE!!

DANCE REVUE

By Pupils of the Lehman

Dancing School

Many Local Children Will Participate!

Sunday and Monday

Don Ameche and

Simone Simon in

"JOSETTE"

also Boris Karloff in

"Frankenstein"

Tuesday and Wednesday

"THE BIRTH OF A BABY"

The Picture Every Adult Should See!

Admission this picture only: Adults 25c

Loges 50c

Producer of this picture will not permit it showing less

25c admission.

Children under 14 not

admitted unless accompanied

by parents.

No Harker Overware

Wednesday ... Suspended

one week!

"The lending policy of Bank of America is to provide

the soundest type of credit best suited to the need of every individual and of every established business no matter how large or small. If any man or woman of good character and proved ability require money for any worthy purpose—for business or for personal uses, no matter how specialized the need, Bank of America has, or will endeavor to provide, the type of credit that will be most helpful."

W. A. Ruggles
 Chairman of the Board of Directors

Bank of America has always made sound capital loans to large and small businesses to the maximum amount permitted by government banking regulations. Now Bank of America is pleased to be able to offer, through its 493 California-wide branches, a new, more liberalized lending service.

LOANS FOR SMALL BUSINESS

Small businesses may be generally divided into two classes—retailers and manufacturers. Bank of America has a special loan plan designed to meet the needs of both. The most common need of the small manufacturer is for working capital and capital for plant improvements. The retailer's problem is primarily one of ready cash to carry more receivables and a sufficient inventory. The manufacturer may avail himself of both the accounts receivable plan and the small capital loan plan outlined below. The retailer's principal problem may be solved by use of the small capital loan plan or a combination of this plan and FHA financing which, under Title I, permits modernization of property, the installation of new store fronts, fixtures, and similar improvements. Small capital loans for either retailers or manufacturers are available only to concerns which have been established for at least

LONG TERM LOANS for Commercial or Industrial enterprises

Bank of America has a convenient method of making amortized time loans in bond or note form to business and industry. This type of loan is particularly well adapted to the concern desiring to expand its operations as well as those desiring to refinance existing obligations.

one year. For loans over \$1000 a concern must have been established for a longer period. Loans may be made with or without security or endorsement, depending upon the amount and maturity of the loan. Loans of this type, however, cannot be made for the purpose of starting new ventures.

COMMERCIAL LOANS and lines of credit are available to any business with satisfactory credit. Bank of America's commercial loan department offers many exclusive features of service.

COMMODITY AND WAREHOUSE LOANS may be arranged through Bank of America on commodities and many types of inventory stored in public or field warehouses. This plan is especially attractive to concerns which must carry large stocks of raw materials.

There is a Bank of America loan for every constructive need. . . . Inquire at your neighborhood branch.

Capital financing for doctors, dentists, hospitals.

Financing for crops, livestock, marketing and processing.

Financing for the oil industry, mining, manufacturing of all kinds.

Financing for automobile and household appliances dealers.

Loans to buy, build or modernize homes, stores or other property.

Timeplan automobile financing.

Timeplan personal loans for every family need.

TERM LOANS FOR SMALL BUSINESS

Amount of Loan Desired	Maximum Repayment Period	Minimum Annual Net Income Requirement*
\$ 500	1 Year	\$ 2,500
\$ 500 - \$2,000	2 Years	\$ 5,000
\$2,001 - \$5,000	3 Years	\$ 5,000
\$5,001 - \$5,000	5 Years	\$10,000

*The term Minimum Annual Net Income Requirement means the net cash income of the business before depreciation and owner's withdrawals.

ACCOUNTS RECEIVABLE FINANCING

Flexible working capital in any amount for manufacturers, wholesalers, jobbers

Bank of America's plan of financing accounts receivable is designed to meet the working capital needs of manufacturers, wholesalers, jobbers. Debtors are not notified and there is no interruption of regular routine. If you are not now discounting, you can free the cash you have invested in receivables and provide flexible working capital for all your requirements at a profit, and at the same time insure adequate capital when sales expand. Loans for capital purposes are also available to manufacturers, wholesalers, jobbers.

Bank of America
 NATIONAL TRUST ASSOCIATION
 MEMBER FEDERAL DEPOSIT INSURANCE CORPORATION

TORRANCE THEATRE

ADULTS 25c Phone Torrance 132 CHILDREN 10c

Thursday, Friday and Saturday, Sept. 1, 2, 3

MARTHA RAYE — BOB BURNS — TITO GUIZAR

DOROTHY LAMOUR and RAY MILLAND in

"TROPIC HOLIDAY"

ROBERT MONTGOMERY — VIRGINIA BRUCE in

"YELLOW JACK"

Walt Disney's "DONALD DUCK" — CARTOON

\$\$\$-PLAY-NITE...FRIDAY-\$\$\$

Sunday, Monday, Tuesday, Sept. 4, 5, 6

SHIRLEY TEMPLE in

"Little Miss Broadway"

VICTOR McLAGLEN in

"WE'RE GOING TO BE RICH"

LABOR DAY MONDAY 5th...CONTINUOUS

FROM 2 P.M.

Wednesday...Only...Sept. 7

\$\$\$-SPECIAL...STARTING WEDNESDAY

GIANT KENO-\$\$\$-DON'T MISS THIS

\$\$\$-SHOW STARTS...6 P.M.-\$\$\$

LATEST HOPALONG CASSIDY — Wm. BOYD in

"BAR 20 JUSTICE"

MELVYN DOUGLAS in

"FAST COMPANY"