

Happy Driving Grounds
HILL, N. H. (U.P.)—This vil-
lage has made no arrests for
automobile law violations in 15
years.

KEEP 'EM OCCUPIED
Landlords: You can't afford to
let your property stand vacant.
Advertise your vacancies in The
Herald's classified section.

Building Total Now \$2,710,623

(Continued from Page 1-A)
23621 Eshelman at a cost of \$900.
Charles B. Turner of 1918 Mar-
tina, is building a 6-room frame
house and double garage at 2024
Martina, \$4,100; A. S. Hudson is
erecting a three-car frame car-

rugated, iron garage at 1919
218th street, \$250; H. Miyamoto
is erecting a moved-in house at
2001 184th, \$200, and P. B.
Rhodes, 2071½ Torrance boule-
vard, is making alterations and
repairs, costing \$200, to a frame
house at 1408 Cedar avenue.

The Herald—3 months, 50 cents.



Of All Your
Faculties
SIGHT
Is The Most
Essential

Have You Had Your Eyes Examined Recently?

ALDEN W. SMITH, Optometrist with

1503 Cabrilla **HOWARD'S JEWELERS** Phone 411
TORRANCE

SPECIAL
Evangelistic
Meeting
EVERY NIGHT, 7:30 P.M.
SEPT. 5 to 11

at the
CHURCH OF THE
NAZARENE
El Prado and Border
GOOD SINGING
Come and Hear
Evangelist
J. L. LOGSDON
W. A. PENNER, Pastor
20507 North Royal



Erection of New Catholic Church is Scheduled to Start Here in Ten Days

EDIFICE TO RISE NEXT TO RECTORY

Construction of a new Cath-
olic Church of the Nativity,
costing in excess of \$20,000
exclusive of interior decora-
tions and furnishings, is ten-
tatively scheduled to start
within 10 days, according to
Rev. Father Joseph V. Fitz-
gerald who said Tuesday that
the Harmon Pacific company
was the lowest bidder on the
edifice.

Archbishop John J. Cantwell
has approved the design and
plans for the new church, which
will be located on the elevated
corner of Engracia and Manuel
avenues adjoining the church
rectory.

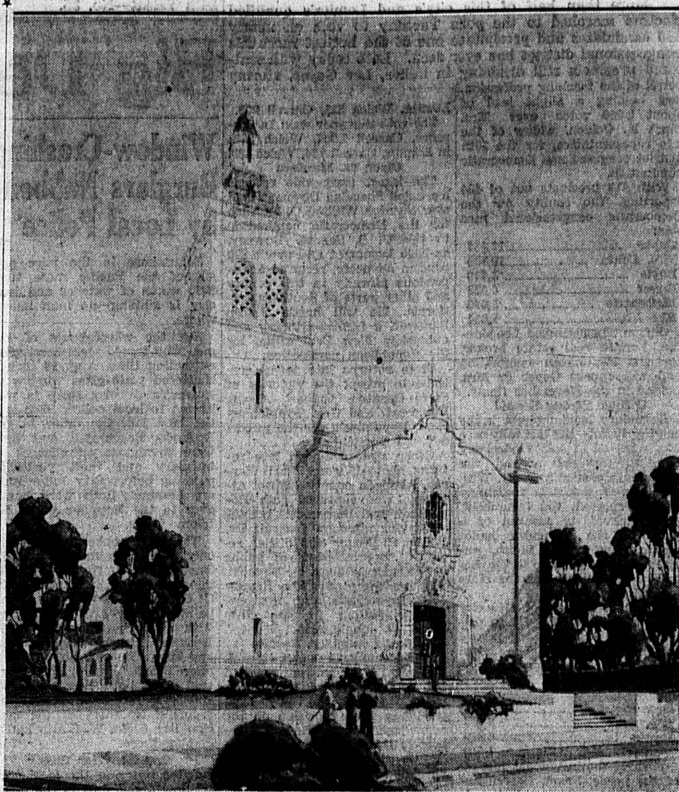
Plans drafted by John E. and
Anthony E. Kauzor, architects
with offices in the Beaux Arts
building, Los Angeles, show that
the structure, designed in the
Spanish Colonial manner, will be
an imposing addition to the spir-
itual life of the city.

Pastor Voices Thanks
Fronting on Engracia, the
church will have a 43 by 110-
foot nave with a 60-foot tower
rising from the side nearest the
corner. The lot, which has been
the property of the Catholic par-
ish here for nearly a quarter-
century, runs 140 feet on Engra-
cia, 204 feet on Manuel and 45
feet on Costa.

"There will be a special beef
dinner to mark the ground
breaking for our new church at
the Civic Auditorium Sunday,
Sept. 11," Father Fitzgerald said.
"I want to invite all residents of
Torrance and vicinity to this
festive occasion. I also extend
my sincere thanks to both my
Catholic and non-Catholic friends
who have made this happy event
possible. Since I have come to
Torrance a year and three
months ago I've had the most
wonderful cooperation and ap-
preciation that any Catholic
priest should desire in his years
in the ministry."

"I hope that all our friends
will join with us on Sept. 11 at
the ground-breaking ceremonies
for our new church and at our
dinner. Any spiritual or finan-
cial aid will be greatly appre-
ciated."

Follows Traditional Style
In addition to the nave or
auditorium of the church seat-



FOR THE GREATER GLORY OF GOD . . .

This is the architects' conception of how
the new Torrance Catholic Church of
the Nativity will look sometime in De-
cember when it is completed and ready
for dedication. Members of the parish
are planning a gala ground-breaking

program and public dinner in the Civic
Auditorium Sept. 11 to celebrate the start
of construction. When finished, equipped
and furnished, the structure will represent
an investment of more than \$25,000, ac-
cording to Rev. Father Joseph V. Fitz-
gerald, local pastor.

ing 410 people, the new edifice
will contain a choir gallery, ele-
vated sanctuary, priest's sacristy
and altar boys' vestry, side al-
tars, confessionals, a baptistry
and a large vestibule. The fur-
nishings and decorations within
the church will be strictly lit-
urgical, Father Fitzgerald and
his architects pointed out this
week. In other words, the en-

tire structure will follow a tra-
ditional Catholic church mode,
many centuries old.
The complete building will rep-
resent an investment of about
\$25,000, it was learned. Only one
other church in the entire south-
west approaches it in design and
that is in Tucson, Ariz., accord-
ing to the local pastor.

The present Church of the Na-
tivity will become a parish hall
and later Father Fitzgerald hopes
it will become a unit of a par-
ochial school here.

Dedication On Feast Day
One of the outstanding de-
tails of the new church will be
the entrance in carved stone.
This will feature a beautiful Na-
tivity scene, symbolic of the
church's name, directly above

the door. The church will be
built of stone and stucco, with
the high tower being capped
with glazed tile and a lantern
of copper. The main roof will be
mission tile and the ceiling will
be open timbers.

According to the Kauzor
Brothers, the edifice should
stand for centuries because of
its sturdy construction. It will
be termite and quake-proof and
the nave floor will be laid on
solid concrete and soundproofed.

Father Fitzgerald hopes the
structure will be completed for a
solemn dedication ceremony on
Christmas Day when the church
celebrates the Feast of the Na-
tivity and also, in the case of
the Torrance parish, its "name-
day."

Council Fixes Sept. 20 for Bond Election

(Continued from Page 1-A)
and bath-house with all neces-
sary equipment; a tunnel under
the Santa Fe tracks to connect
the pool site with the rest of the
park, and fences to enclose the
proposed addition. Cost: \$53,908,
of which the city's share would
be \$35,000 (amount of bond
issue) with the PWA supplying
\$18,908.

(2) Recreation building and
playground house, four illumi-
nated tennis courts and all
equipment and furnishings, to
be located in the city park. Cost:
\$32,837 of which the city's share
would be \$21,000 (amount of
bond issue) and the PWA grant
would be \$11,837.
(3) Purchase of a site for a
recreation-library building, ten-
nis court and playground at
Walteria, together with all equip-
ment and furnishings. Cost:
\$12,195 of which the city's share
—and bond issue— would be
\$8,000 with the PWA supplying
the remaining \$4,195.

The returns of the election are
to be canvassed at a special coun-
cil meeting, Monday, Sept. 26.

Don't Be A RENTER All Your Life!

Never before in the his-
tory of this or any other
country has the common
man had such a marvel-
ous opportunity to own
his own home! FHA
Terms make OWNING a
home EASIER than
RENTING!

We will be glad to dis-
cuss with you the con-
struction of a new home
... built NOW, while
materials are low.

**TORRANCE
LUMBER CO.**

1752 BORDER
Phone 61

Wise Wives Know How

to Always look smart and
keep the family budget low.

Wise wives say the secret
is using Piper's Dry Clean-
ing Service . . . satisfaction
every time!



PIPER'S CLEANERS
1344 Post—Ph. 370—Across from Library

LAST CALL FOR PICNICS!

NOTHING WILL MAKE YOUR LABOR DAY OUTING MORE ENJOYABLE THAN A WELL-FILLED LUNCH BASKET. THESE FINE A & P FOODS WILL HELP YOU TO PACK A LUNCH FIT FOR A KING—AND THESE PRICES MAKE IT EASY ON YOUR POCKETBOOK!

ARMOUR'S STAR OR CUDAHY'S PURITAN TENDER
SKINNED HAMS WHOLE OR lb. **29c**
SHANK HALF

CUDAHY'S EVER-READY TENDERIZED
PICNIC HAMS "READY TO SERVE" lb. **25c**

GRAIN-FED "BRANDED" STEER BEEF
CHUCK ROAST 7-BONE lb. **16c**
CENTER CUT

GROUND BEEF
FRESH LEAN lb. **12c**
BOILING BEEF
PLATE RIB lb. **7c**

"BEST EVER" FRESH LIVER SAUSAGE,
CONVEY'S BOLOGNA lb. **17c**
CUDAHY'S PURITAN, ARMOUR'S STAR
SLICED BACON 1-lb. pkg. **17c**
SWISS RADIO-CURED BY THE
BACON PICE lb. **25c**
"BEST EVER" ASSORTED SLICED
LUNCH MEATS lb. **25c**

ARMOUR'S STAR JUBILEE
SKINNED HAMS
lb. **36c**

GRAIN-FED "BRANDED" STEER BEEF
POT ROAST
lb. **14c**

Grain-Fed Branded Steer Beef
STEAKS
ROUND OR SWISS lb. **25c**

SULTANA-ALASKA
RED SALMON No. 1 18c
6 Delicious Flavors
JELL-O 3 pkgs. **14c**
DUNBAR
SHRIMP DRY PACK 5-oz. can **15c**
ANN PAGE
GRAPE JAM 1-lb. jar **13c**
DOLE Pineapple
GEMS 14-oz. can **25c**
DEL MONTE Cream Style
SWEET CORN No. 2 can **10c**

GOLD CREST CREAM
CHEESE lb. **15c**
EIGHT O'CLOCK
COFFEE 3-lb. bag **40c** 1-lb. bag **14c**
C. H. B. ASSORTED
PICKLES 3 6-oz. jars **25c**
GLENWOOD TENDER
SWEET PEAS 2 No. 2 cans **15c**

SEQUOIA MEDIUM
RIPE OLIVES 5-oz. can **7c**
HORNEL
SPAM 12-oz. can **29c**
DUNN'S ASSORTED
JELLIES 7-oz. glass **10c**
WHITE HOUSE
EVAP. MILK 3 tall cans **16c**
BEVERAGE MIXER
KOOL-AID 3 pkgs. **10c**
KRAFT CHEESE
VELVEETA 1/2-lb. pkg. **15c**

BROWNIE BEER 2 quart bottles **25c** 11-oz. steinie **5c**
(Plus Deposit) (Plus Deposit)

DOLE HAWAIIAN
PINEAPPLE SPEARS 25-oz. can **14c**
COLD STREAM
PINK SALMON 2 No. 1 cans **19c**
CHURCH'S PURE
GRAPE JUICE quart bottle **29c** pint bottle **15c**

"BETTER BEST" SODA OR GRAHAM
CRACKERS 2-lb. 25c 1-lb. **13c**
"BETTER BEST"
SMILES BUTTER CRACKERS 1-lb. pkg. **17c**
N. B. C.'S PRIDE ASSORTED
COOKIES 1-lb. **23c**

SALAD DRESSING IONA BRAND quart **22c**
Pint jar, 12c

CAMPBELL'S—WITH TOMATO SAUCE
PORK BEANS 2 1-lb. cans **13c**
DEL MONTE
JUICE GRAPEFRUIT 3 No. 2 cans **25c**
DEL MONTE
ORANGE JUICE 12-oz. 5c
ORANGE PEKOE
NECTAR TEA 3-lb. pkg. **14c**
LIBBY'S
APPLE BUTTER No. 1 can **9c**
CAMPFIRE
M'MALLOWS 1-lb. pkg. **15c**
Price .146 Tax .004

DEL MONTE MAMMOTH TIPS
ASPARAGUS 2 picnic cans **25c**
BLUE SEA
FANCY TUNA 2 No. 1 cans **27c**
LIBBY'S
POT. MEAT 3 No. 1 cans **10c**
LIBBY'S VIENNA
SAUSAGE 3 No. 1 cans **25c**
LIBBY'S
CORNER BEEF 12-oz. can **17c**
A PRIZE IN EVERY PACKAGE
CRACKER JACK 3/10 Price .097 Tax .003

DEL MONTE
TOM. SAUCE 3 8-oz. cans **11c**
ANN PAGE—PREPARED
SPAGHETTI 2 1-lb. cans **13c**
HEINZ TOMATO
KETCHUP 14-ounce bottle **17c** 8-oz. bottle **12c**
GOLD MEDAL
FLOUR 24 1/2 lbs. 90c 10-lb. sack **40c**
SPERRY DRIFTED SNOW
FLOUR 24 1/2 lbs. 85c 10-lb. sack **38c**
VITAMIN A, B, C DOG FOOD
RED HEART 3 1-lb. cans **29c**
Price .081 Tax .000

CUT-RITE
WAX PAPER 40-ft roll 125-ft. 15c **5c**
ANN PAGE
P. NUT BUTTER 1-lb. jar **17c** 8-oz. jar **15c**

A-PENN 100% PURE PENN
MOTOR OIL SAE 20, 30, 40, 50 2-gal. can **1.25**
Price \$2.125 Tax .0375

RAINIER CANNED
BEER 12-oz. can **10c**
Price .087 Tax .003

Meat And Vegetable Prices Are
Effective Through Sat., Sept. 3.

A & P FOOD STORES

Grocery Prices Are Effective
Through Saturday, Sept. 3.

WE RESERVE THE RIGHT TO LIMIT QUANTITIES
1319 SARTORI AVE., TORRANCE

FRUITS AND VEGETABLES

J. H. HALE LARGE FREESTONE
PEACHES 3 lbs. **10c**
BUY AT LEAST A LUG OF THESE FINE PEACHES
AT THIS EXCEPTIONALLY LOW PRICE!

BARTLETT PEARS | GRAPES
LAKE COUNTY 3 lbs. **13c** | THOMPSON SEEDLESS 3 lbs. **5c**



Less work to entertain with
THE AUTOMEAL
PLUG-IN KITCHEN

It's easy to entertain when you have an Automeal
portable electric roaster. Special dishes for large
groups are quickly prepared and served right in the
roaster. You spend less time cooking, too. Cash price
\$24.95, complete with utensil set and free steel table.
Easy terms. Broiler-griddle unit for toasting, frying and
broiling—\$4.95 extra. See the Automeal today.

\$295
DOWN
PLUS SALES TAX



AT ALL DEALERS... or your EDISON OFFICE